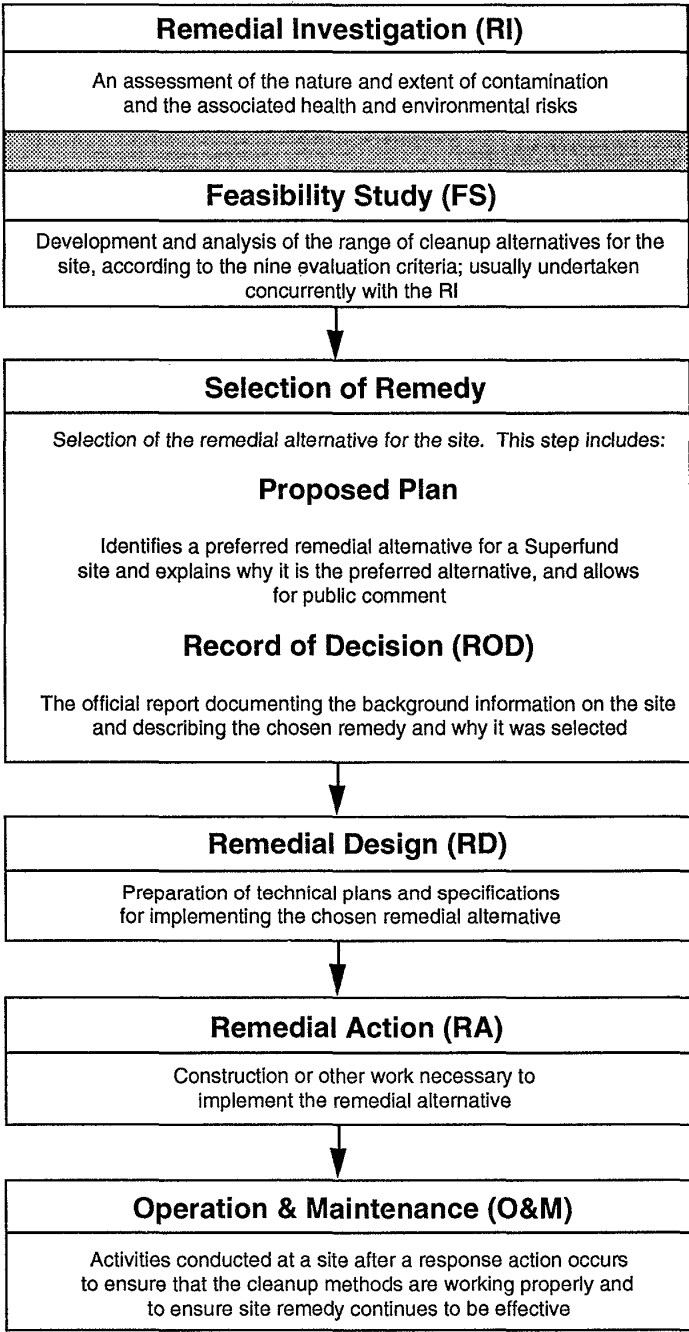


Gowanus Canal Study Area

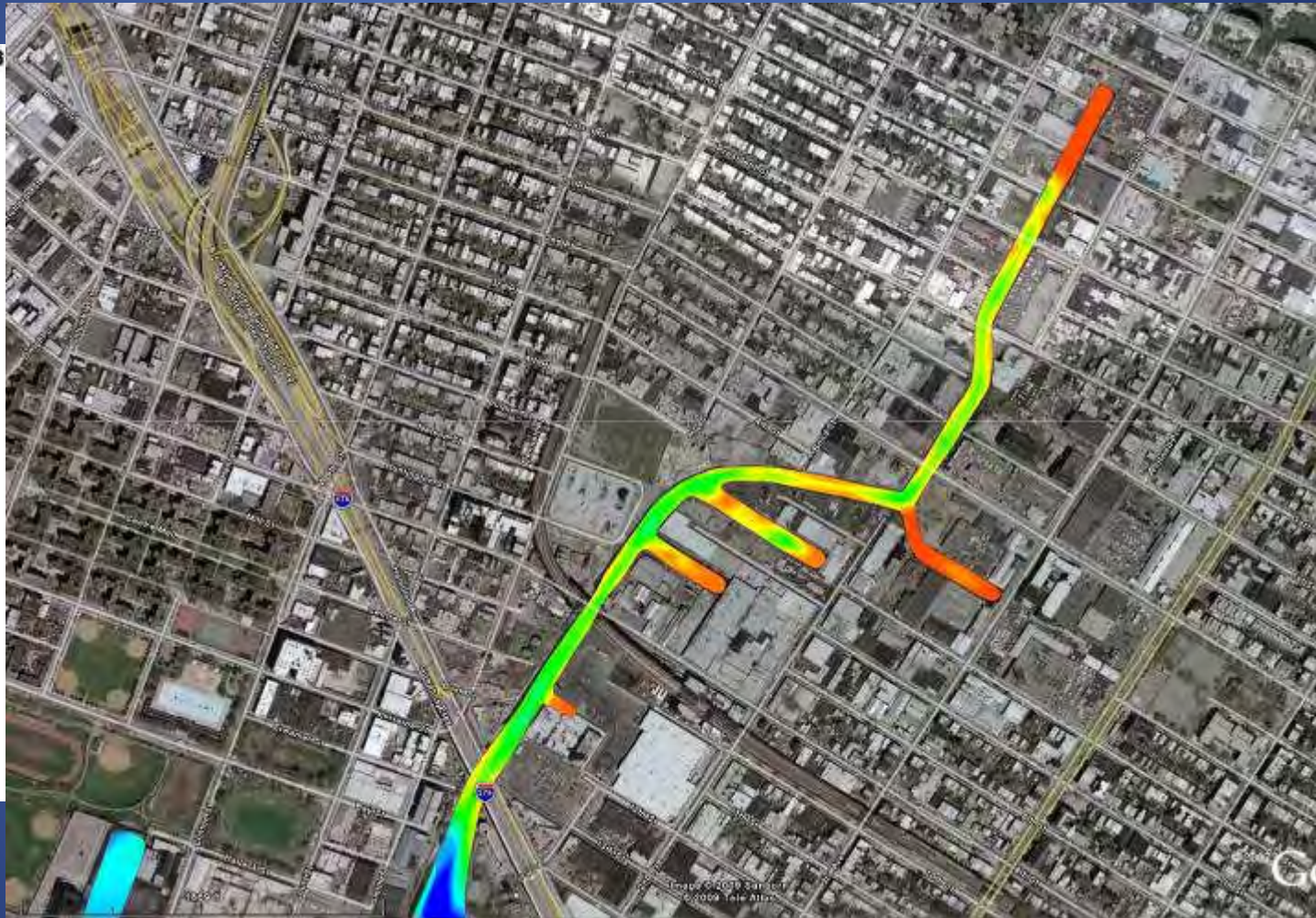
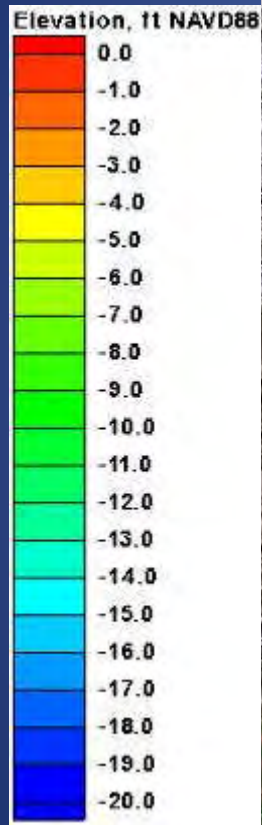




RI/FS Field Activities

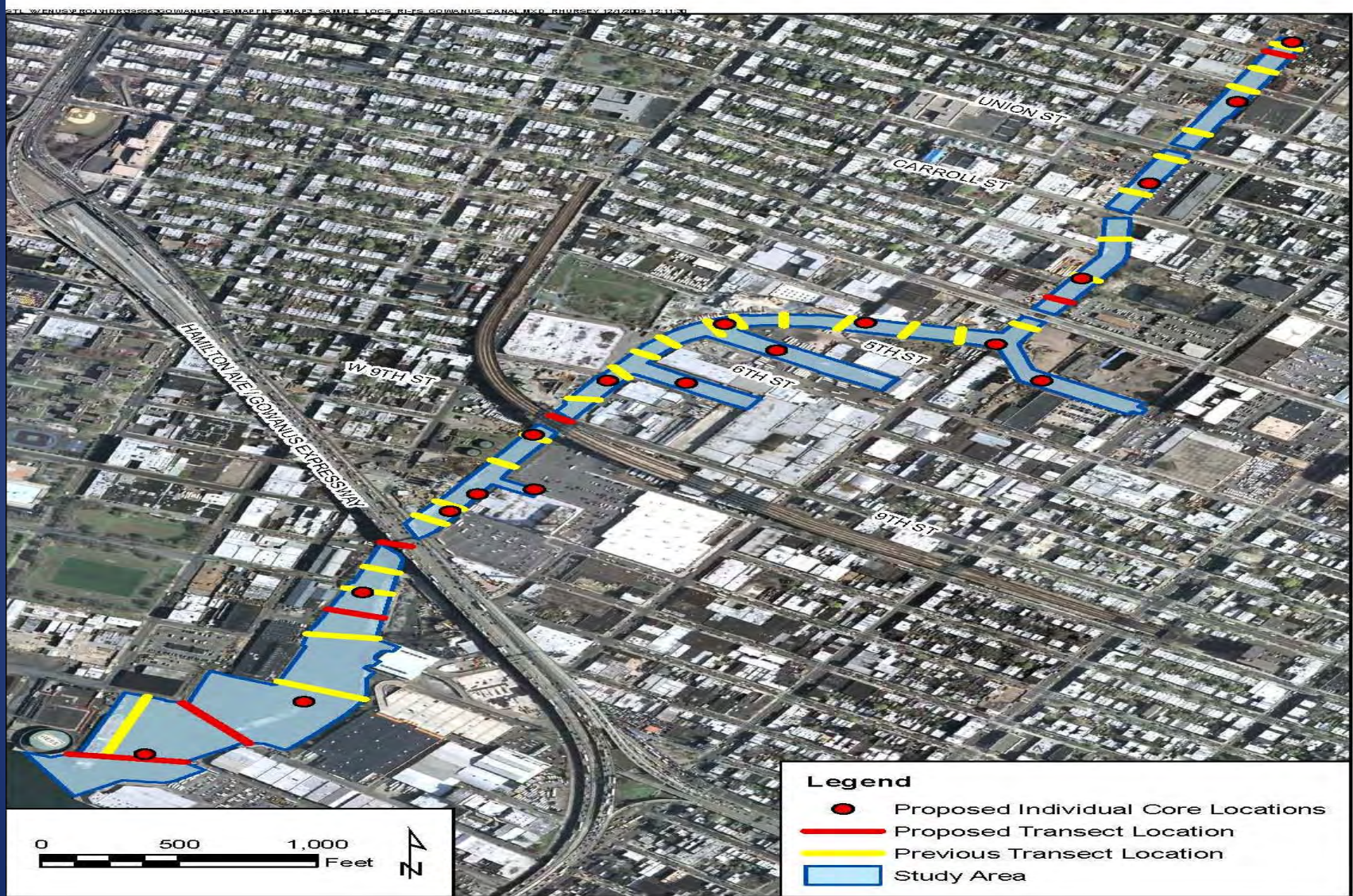
- Bathymetric survey
- Surface sediment sampling (top 6 inches)
- Surface water sampling
- Air sampling
- Fish and crab sampling
- Sediment core sampling
- Sampling at CSOs and other outfalls
- Groundwater sampling and water level measurements

Bathymetry (2003)

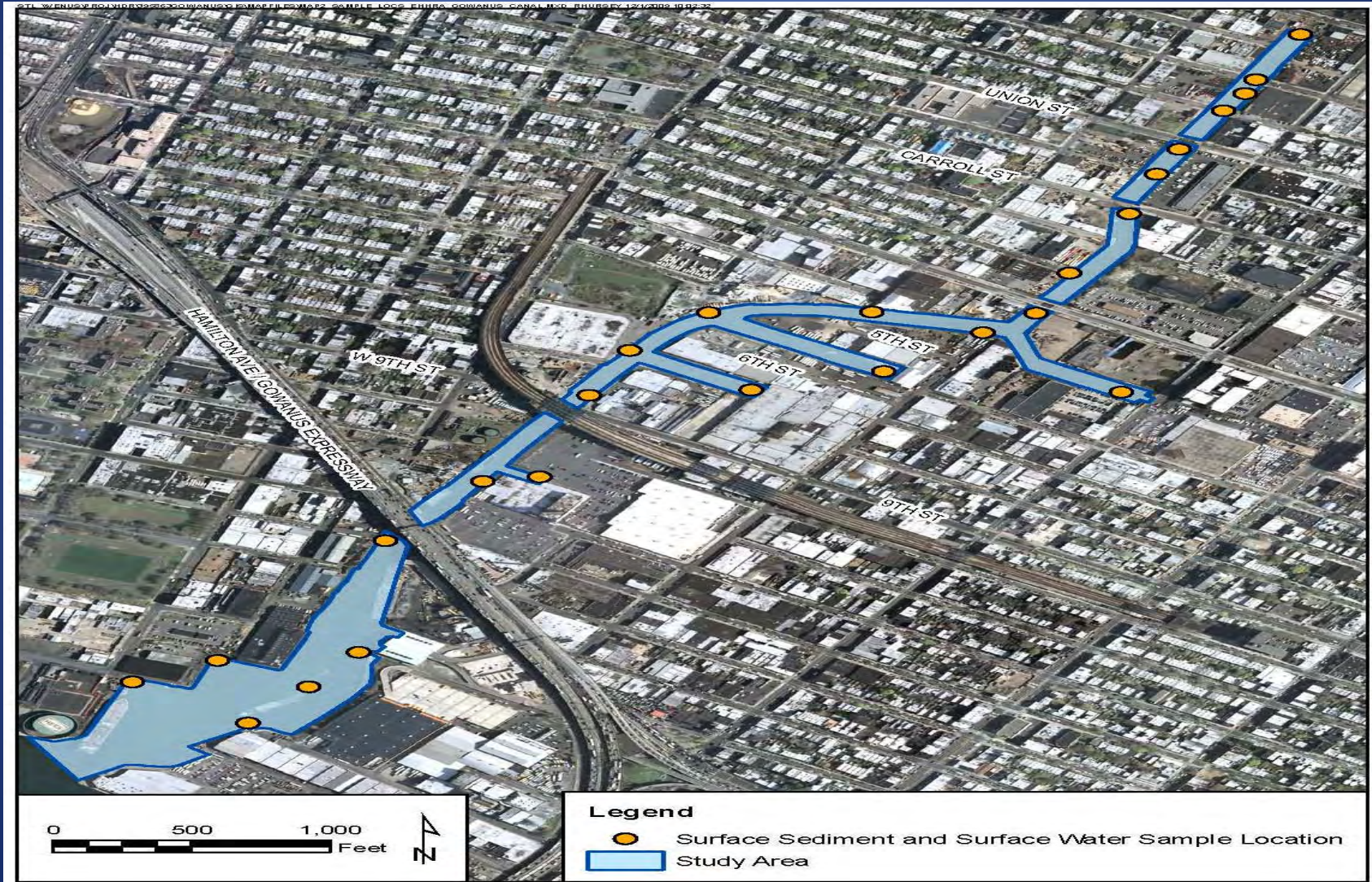


Bathymetric survey data provided by the U.S. Army Corps of Engineers, Engineer Research and Development Center

Sediment Core Sampling Locations



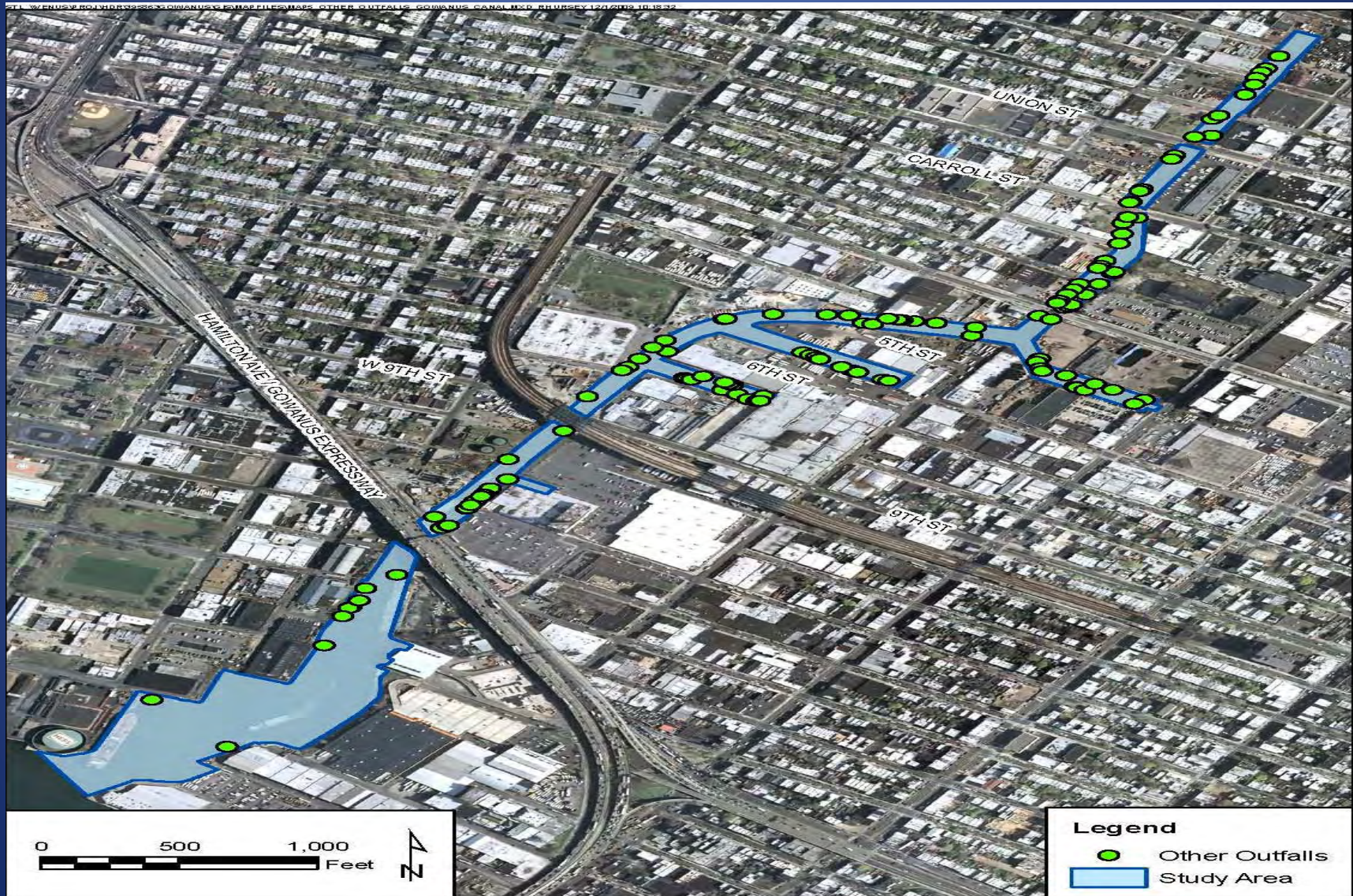
Human Health and Ecological Risk Assessment Sampling Locations



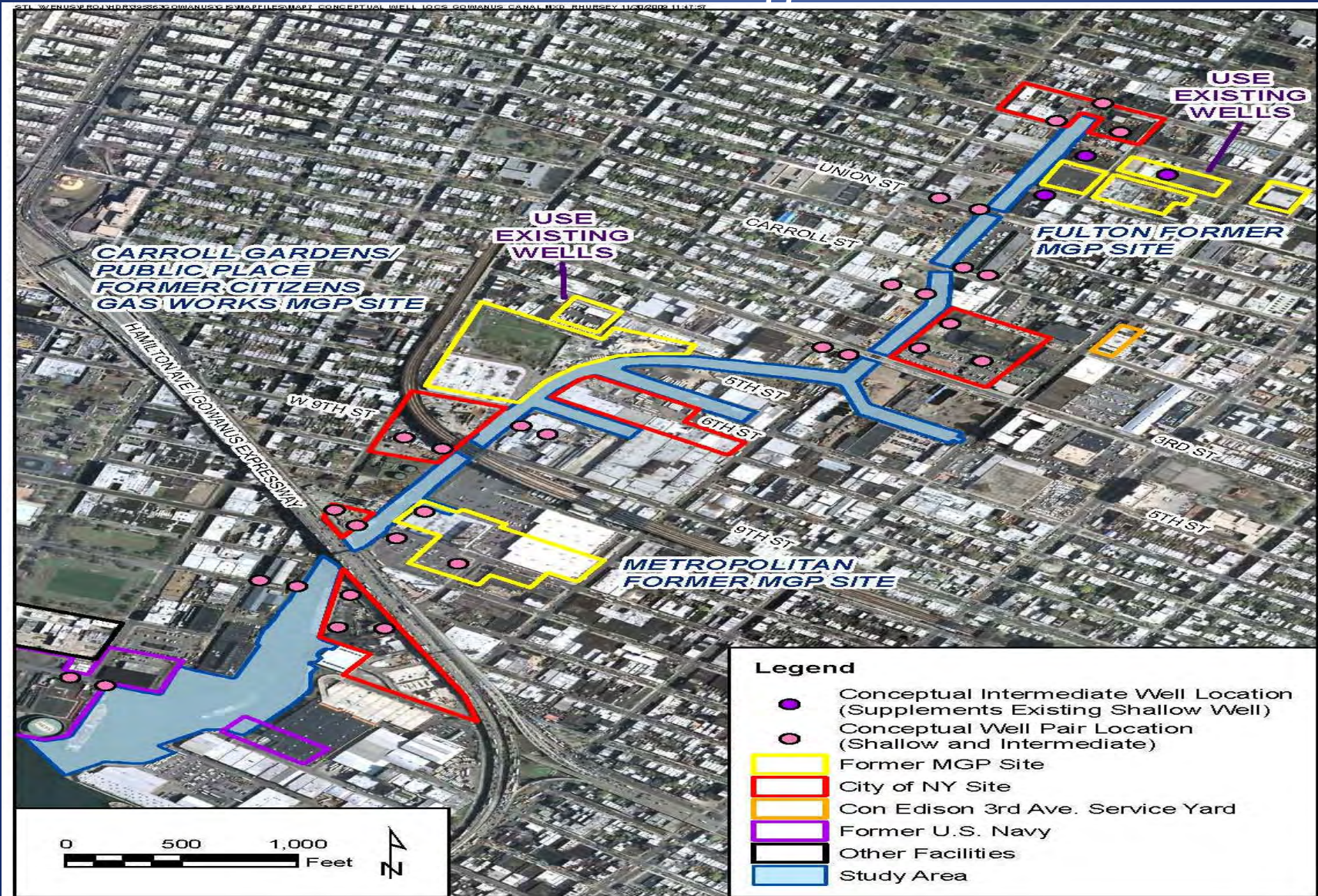
CSO and Storm Outfall Locations



Other Outfall Locations



Groundwater Monitoring Well Locations



Feasibility Study: Development and Screening of Alternatives

- Identify remedial action objectives (RAOs)
- Identify potential technologies that may satisfy these objectives
- Screen the technologies based on their effectiveness, implementability, and cost
- Assemble technologies into alternatives
- Evaluate based on 9 Criteria (in NCP -- National Contingency Plan)

Feasibility Study: Detailed Analysis of Alternatives

Nine evaluation criteria:

1. Overall protection of human health & the environment
2. Compliance with Applicable or Relevant and Appropriate Standards (ARARs)
3. Long-term effectiveness and permanence
4. Reduction of toxicity, mobility, or volume
5. Short-term effectiveness
6. Implementability
7. Cost
8. State acceptance
9. Community acceptance