

**GOWANUS CANAL SUPERFUND SITE  
RTA1 REMEDIAL CONSTRUCTION  
Water Quality Monitoring Weekly Data Summary**

**PERIOD: JANUARY 11 TO JANUARY 15, 2021**

**Date of Report: January 20, 2021**

## **Report Contents**

- Scope of Monitoring
- Report of Exceedances
- Turbidity Buoy Data
- Summary of Visual Observations

*Prepared by*

**B&B Engineers & Geologists**   
of new york, p.c.

*an affiliate of Geosyntec Consultants*

1255 Roberts Blvd, Suite 200  
Kennesaw, GA 30144  
Project Number JR0289A

## 1. SCOPE OF MONITORING

The following report summarizes water quality monitoring data collected during the week of January 11, 2021. In accordance with the Water Quality Monitoring Plan for In-waterway Construction Activities (WQMP) three turbidity buoys were deployed to monitor turbidity at the start of dredging between Carroll Street Bridge and 3<sup>rd</sup> Street Bridge. One turbidity buoy was deployed just south of the 3<sup>rd</sup> Street Bridge outside of the air curtain and traditional turbidity curtain. This buoy is referred to as the 3<sup>rd</sup> Street Sentinel Buoy. A second turbidity buoy was deployed just south of the Carroll Street Bridge and is referred to as the Carroll Street Sentinel Buoy. The third turbidity buoy was deployed in the Fourth Street Turning Basin in order to monitor background turbidity unaffected by in-water construction activities. This turbidity buoy is referred to as the Ambient Buoy. A map indicating the approximate locations of the turbidity buoys is provided in **Figure 1**. Each turbidity buoy was equipped with a YSI EXO3 water quality meter with optical turbidity sensor. The buoys were field calibrated and programmed such that readings were collected every 15 minutes. After each measurement, the turbidity data were transmitted to a File Transfer Portal (FTP) site via telemetry. This report presents a summary of turbidity data collected from the ambient and sentinel buoys between 7 AM and 6 PM each day during the week of January 11<sup>th</sup>. Daily turbidity data tables are provided in **Appendix A**. No handheld measurements were collected during this reporting period. Visual observations of turbidity and sheen are summarized in Section 4.



## 2. REPORT OF EXCEEDANCES

No exceedances of the action level criteria were met during the reporting period. Exceedances to the numerical trigger criterion were detected at the Carroll St Sentinel Buoy on January 12, January 14, and January 15, 2021. An exceedance to the numerical trigger criterion was detected at the 3<sup>rd</sup> St Bridge Buoy on January 12. Further information is provided in Section 2.1. Refer to the WQMP for further information regarding the Trigger and Action Criteria. Threshold criteria are summarized as follows:

- **Trigger criterion** – Any of the following:
  - The rolling average of the relevant sentinel buoy turbidity measurements over a one-hour period exceeds the rolling average of the ambient buoy turbidity measurements by 20 NTU excluding any eliminated outlier measurements and in-waterway construction activities cannot be immediately excluded as the source following consultation with EPA; or
  - Either an oil sheen or a turbidity plume is visually observed at the relevant sentinel buoy and in-waterway construction activities are readily identified as the source.
- **Action criterion** – Any of the following:
  - The rolling average of the turbidity measurements of the sentinel buoy outside of RTA1 over a one-hour period exceeds the rolling average of the ambient buoy turbidity measurements by 40 NTU excluding any eliminated outlier measurements and in-waterway construction activities cannot be immediately excluded as the source following consultation with EPA; or
  - Either an oil sheen or a turbidity plume is visually observed outside of RTA1 and any deployed engineering controls and in-waterway construction activities are readily identified as the source.

An outlier is defined as a reading that is outside the range of 50 to 200 percent of the average of the three previous readings. In addition, to be considered an outlier, the subsequent reading must return to a range of 75 to 133 percent of the average of the three readings preceding the outlier.

### 2.1 Response to Criteria Exceedances

A detailed description of responses to exceedances of the trigger and action level criteria is provided in Section 4.2 of the WQMP. The trigger level criterion serves to provide early notification to the contractor of construction activities that may lead to an exceedance of the action level criterion. In the event of an exceedance to the trigger criterion, the contractor will not be stopped and the contractor will be directed to investigate the source of the exceedance and evaluate Best Management Practices (BMPs). In the event of an exceedance to the action level criterion, in-waterway construction activities may be slowed or temporarily suspended as necessary while the contractor investigates the source of the exceedance and appropriate mitigation and corrective measures are determined.

There were no exceedances of the action level criteria. On January 12, 2021 from 1:30 PM to 1:45 PM an exceedance of the numerical trigger level criterion was detected in the vicinity of the Carroll Street Sentinel Buoy. Exceedance were observed in the vicinity of the 3<sup>rd</sup> Street Bridge from 2:00 PM to 2:15 PM and from 3:30 PM to 3:45 PM on January 12, 2021. These exceedances were a result of barge movements. On January 14, 2021 from 2:15 PM to 3:15 PM an exceedance of the numerical trigger level criterion was detected in the vicinity of the Carroll Street Sentinel Buoy as a result of temporary sediment resuspension from dredge barge movements. On January 15, 2021 at 11:45 AM and 2:30 PM exceedances to the numerical trigger level criterion were observed at the Carroll Street Sentinel Buoy during debris probing activities.

### 3. TURBIDITY BUOY DATA

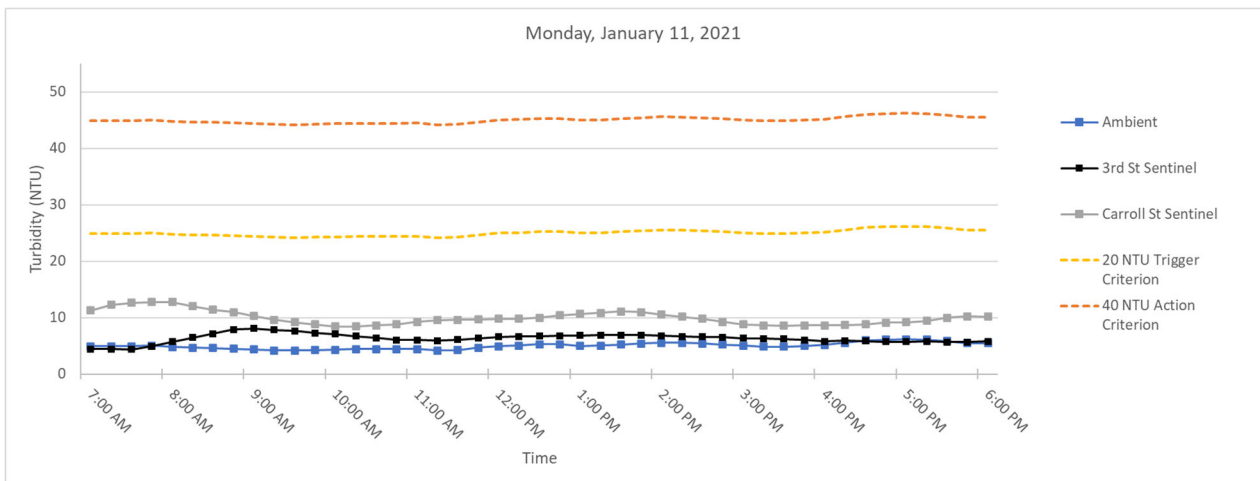
The following section provides turbidity data for the sentinel and ambient turbidity buoys from 7 AM to 6 PM from January 11 to January 15, 2021. Exceedances of the numerical trigger level criterion were detected on January 12, 14, and 15 at the Carroll Street Sentinel Buoy. An exceedance of the numerical trigger level criterion was detected on January 12 at the 3<sup>rd</sup> St Sentinel Buoy. Section 2.1 contains further information on the exceedances. No exceedance to the numerical rolling average action criterion were observed during the reporting period. **Table 1** below provides a summary of the turbidity data for the reporting period.

**Table 1.** Daily average and maximum differences between the rolling average turbidity readings from RTA1 sentinel buoys and the ambient buoy between 7 AM and 6 PM

Date	Average Rolling Average Difference (NTU)		Maximum Rolling Average Difference (NTU)	
	3rd St - Ambient	Carroll St - Ambient	3rd St - Ambient	Carroll St - Ambient
Monday January 11, 2021	1.31	4.96	3.68	7.98
Tuesday January 12, 2021	8.48	10.43	21.10	20.71
Wednesday January 13, 2021	2.95	4.94	8.06	9.88
Thursday January 14, 2021	4.83	10.06	13.04	26.89
Friday January 15, 2021	4.17	9.35	13.97	20.47

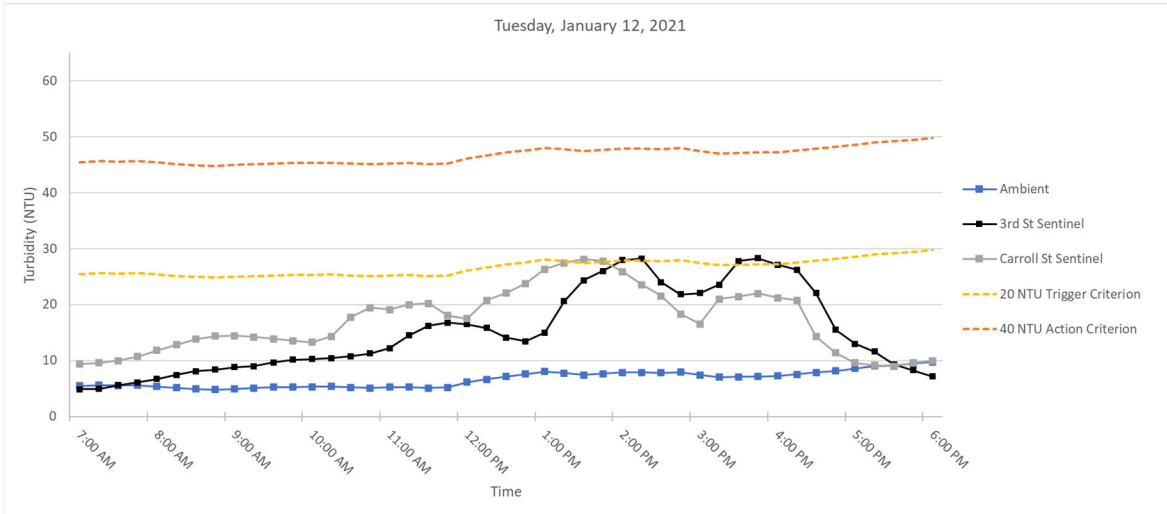
#### 3.1 Monday, January 11, 2021

**Figure 2.** Hourly rolling average turbidity readings on Monday, January 11, 2021 from 7 AM to 6 PM.



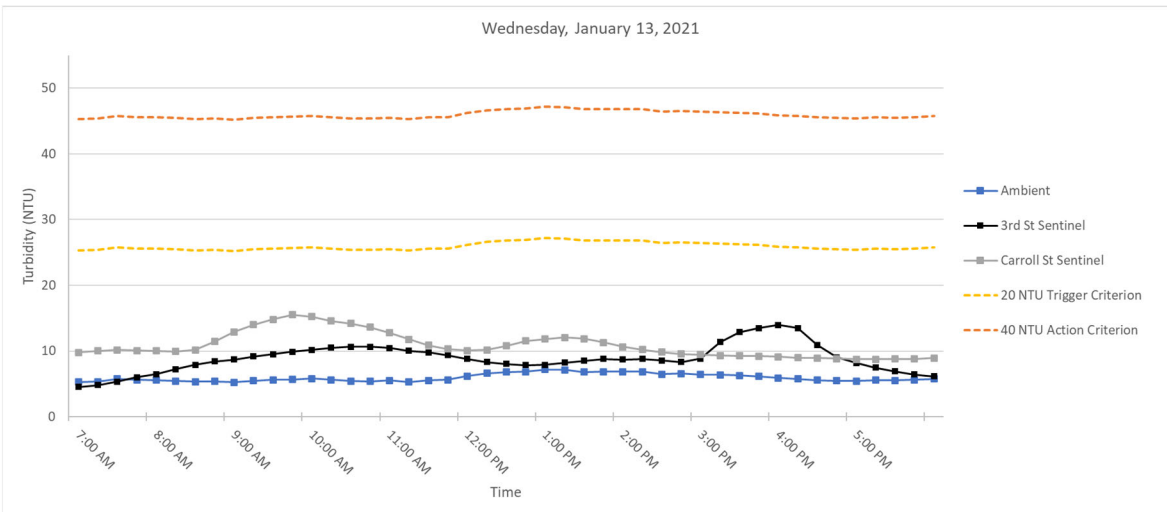
### 3.2 Tuesday, January 12, 2021

**Figure 3.** Hourly rolling average turbidity readings on Tuesday, January 12, 2021 from 7 AM to 6 PM.



### 3.3 Wednesday, January 13, 2021

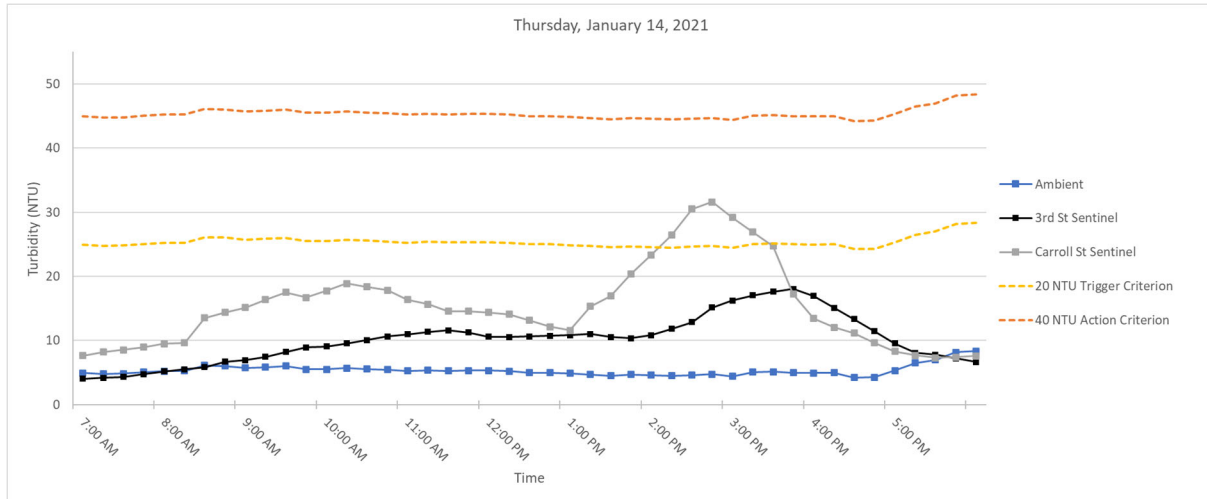
**Figure 4.** Hourly rolling average turbidity readings on Wednesday, January 13, 2021 from 7 AM to 6 PM.



**Note:** On January 13, 2021 at 9:00 AM a spike in turbidity at the Ambient Buoy of 13.17 NTU was eliminated as an outlier in accordance with the outlier analysis defined in Section 2 and the WQMP.

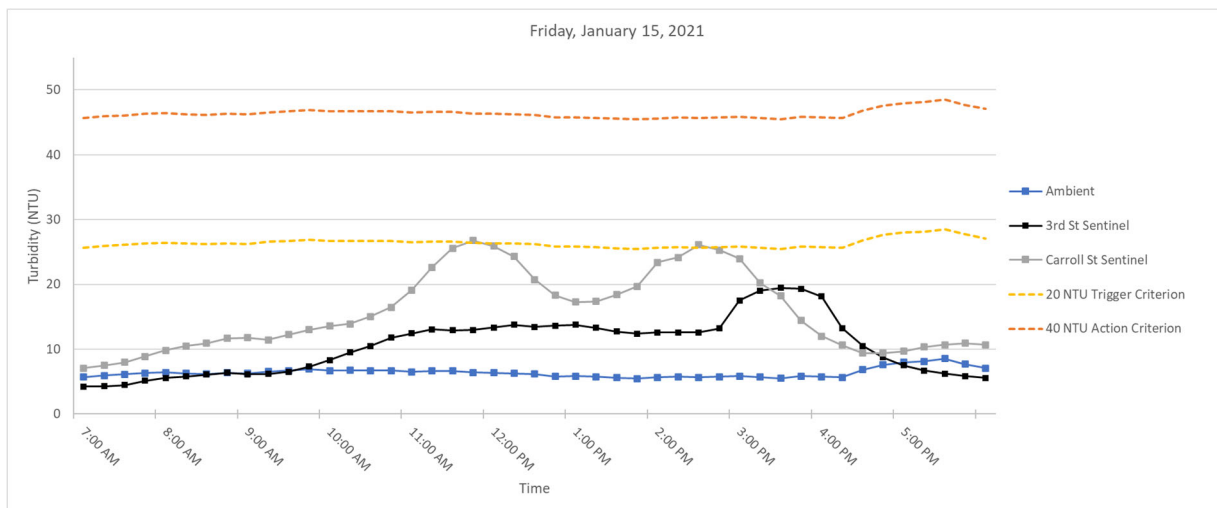
### 1.4 Thursday, January 14, 2021

**Figure 5.** Hourly rolling average turbidity readings on Thursday, January 14, 2021 from 7 AM to 6 PM.



### 1.5 Friday, January 15, 2021

**Figure 5.** Hourly rolling average turbidity readings on Friday, January 15, 2021 from 7 AM to 6 PM.





## **SUMMARY OF VISUAL OBSERVATIONS**

During the Phase I dredging with the environmental clamshell bucket some sheen was observed during dredging. This sheen was localized in the area of dredging and did not migrate outside of RTA1.

**APPENDIX A**  
**Turbidity Data Tables**

# Monday, January 11, 2021

Time	Turbidity (NTU)			Rolling Average Turbidity (NTU)			Difference (NTU)	
	Ambient	3rd Street	Carroll Street	Ambient	3rd Street	Carroll Street	3rd St - Ambient	Carroll St - Ambient
7:00:00	4.78	4.82	14.17	4.95	4.45	11.31	-0.49	6.36
7:15:00	4.74	4.76	13.19	4.94	4.44	12.27	-0.50	7.33
7:30:00	4.73	4.02	12.47	4.94	4.35	12.64	-0.59	7.70
7:45:00	4.98	6.77	12.24	5.03	4.92	12.77	-0.11	7.74
8:00:00	4.82	8.25	11.89	4.81	5.72	12.79	0.91	7.98
8:15:00	4.21	8.61	10.34	4.70	6.48	12.03	1.79	7.33
8:30:00	4.24	8.24	10.18	4.60	7.18	11.42	2.58	6.83
8:45:00	4.24	7.64	10.1	4.50	7.90	10.95	3.40	6.45
9:00:00	4.37	7.56	8.97	4.38	8.06	10.30	3.68	5.92
9:15:00	4.01	7.21	8.52	4.21	7.85	9.62	3.64	5.41
9:30:00	4.09	7.56	8.31	4.19	7.64	9.22	3.45	5.03
9:45:00	4.38	6.38	8.06	4.22	7.27	8.79	3.05	4.57
10:00:00	4.83	6.75	8.36	4.34	7.09	8.44	2.76	4.11
10:15:00	4.78	5.77	9.08	4.42	6.73	8.47	2.32	4.05
10:30:00	4.16	5.58	9.34	4.45	6.41	8.63	1.96	4.18
10:45:00	4.06	5.65	9.37	4.44	6.03	8.84	1.58	4.40
11:00:00	4.47	6.29	10.06	4.46	6.01	9.24	1.55	4.78
11:15:00	3.48	6.27	9.84	4.19	5.91	9.54	1.72	5.35
11:30:00	5.22	6.82	9.48	4.28	6.12	9.62	1.84	5.34
11:45:00	6.2	6.69	9.62	4.69	6.34	9.67	1.66	4.99
12:00:00	5.4	6.76	9.95	4.95	6.57	9.79	1.61	4.84
12:15:00	5.08	6.78	10.05	5.08	6.66	9.79	1.59	4.71
12:30:00	4.6	6.55	10.95	5.30	6.72	10.01	1.42	4.71
12:45:00	5.12	7.01	11.5	5.28	6.76	10.41	1.48	5.13
13:00:00	4.87	7.09	11.01	5.01	6.84	10.69	1.82	5.68
13:15:00	5.58	7.22	10.65	5.05	6.93	10.83	1.88	5.78
13:30:00	6.01	6.73	11.4	5.24	6.92	11.10	1.68	5.87
13:45:00	5.55	6.51	10.38	5.43	6.91	10.99	1.49	5.56
14:00:00	5.83	6.35	9.13	5.57	6.78	10.51	1.21	4.95
14:15:00	4.77	6.41	9.21	5.55	6.64	10.15	1.10	4.61
14:30:00	4.86	6.97	8.87	5.40	6.59	9.80	1.19	4.39
14:45:00	5.09	6.51	8.52	5.22	6.55	9.22	1.33	4.00
15:00:00	4.64	5.43	8.42	5.04	6.33	8.83	1.30	3.79
15:15:00	4.83	6.04	8.2	4.84	6.27	8.64	1.43	3.81
15:30:00	4.92	6.3	8.89	4.87	6.25	8.58	1.38	3.71
15:45:00	5.48	5.89	9.11	4.99	6.03	8.63	1.04	3.64
16:00:00	5.97	5.42	8.56	5.17	5.82	8.64	0.65	3.47
16:15:00	6.64	5.94	8.69	5.57	5.92	8.69	0.35	3.12
16:30:00	6.89	5.65	8.89	5.98	5.84	8.83	-0.14	2.85
16:45:00	5.62	5.7	10.37	6.12	5.72	9.12	-0.40	3.00
17:00:00	5.81	5.8	9.42	6.19	5.70	9.19	-0.48	3.00
17:15:00	5.56	5.86	9.76	6.10	5.79	9.43	-0.31	3.32
17:30:00	5.33	5.22	11.62	5.84	5.65	10.01	-0.20	4.17
17:45:00	5.24	5.63	10	5.51	5.64	10.23	0.13	4.72
18:00:00	5.53	6.42	9.98	5.49	5.79	10.16	0.29	4.66

## Tuesday, January 12, 2021

Time	Turbidity (NTU)			Rolling Average Turbidity (NTU)			Difference (NTU)	
	Ambient	3rd Street	Carroll Street	Ambient	3rd Street	Carroll Street	3rd St - Ambient	Carroll St - Ambient
7:00:00	5.79	4.96	9.84	5.47	4.87	9.37	-0.60	3.90
7:15:00	6.01	5.23	10.16	5.60	4.92	9.58	-0.67	3.99
7:30:00	5.55	7.81	11.5	5.56	5.60	9.98	0.04	4.42
7:45:00	4.99	7.28	13.18	5.61	6.09	10.69	0.48	5.08
8:00:00	4.62	8.37	14.39	5.39	6.73	11.81	1.34	6.42
8:15:00	4.5	8.39	15.02	5.13	7.42	12.85	2.28	7.72
8:30:00	4.93	8.6	14.95	4.92	8.09	13.81	3.17	8.89
8:45:00	5.01	9.33	14.4	4.81	8.39	14.39	3.58	9.58
9:00:00	5.59	9.5	13.5	4.93	8.84	14.45	3.91	9.52
9:15:00	5.55	8.99	13.28	5.12	8.96	14.23	3.85	9.11
9:30:00	5.16	11.82	13.4	5.25	9.65	13.91	4.40	8.66
9:45:00	5.04	11.05	13.19	5.27	10.14	13.55	4.87	8.28
10:00:00	5.23	10.08	13.09	5.31	10.29	13.29	4.97	7.98
10:15:00	5.88	10.17	18.62	5.37	10.42	14.32	5.05	8.94
10:30:00	4.8	10.69	30.49	5.22	10.76	17.76	5.54	12.54
10:45:00	4.57	14.24	21.9	5.10	11.25	19.46	6.14	14.35
11:00:00	5.72	15.87	11.4	5.24	12.21	19.10	6.97	13.86
11:15:00	5.34	21.5	17.46	5.26	14.49	19.97	9.23	14.71
11:30:00	5.11	18.78	19.91	5.11	16.22	20.23	11.11	15.12
11:45:00	5.35	13.51	19.67	5.22	16.78	18.07	11.56	12.85
12:00:00	9.13	12.83	19.04	6.13	16.50	17.50	10.37	11.37
12:15:00	8.43	12.65	27.89	6.67	15.85	20.79	9.18	14.12
12:30:00	7.86	12.71	23.74	7.18	14.10	22.05	6.92	14.87
12:45:00	7.1	15.48	28.57	7.57	13.44	23.78	5.86	16.21
13:00:00	7.68	21.2	32.34	8.04	14.97	26.32	6.93	18.28
13:15:00	7.8	40.97	24.71	7.77	20.60	27.45	12.83	19.68
13:30:00	6.6	31.31	31.21	7.41	24.33	28.11	16.93	20.71
13:45:00	9.08	21	22.05	7.65	25.99	27.78	18.34	20.12
14:00:00	8.27	25.12	19	7.89	27.92	25.86	20.03	17.98
14:15:00	7.59	22.59	20.8	7.87	28.20	23.55	20.33	15.69
14:30:00	7.44	20.07	14.81	7.80	24.02	21.57	16.22	13.78
14:45:00	7.35	20.3	15.09	7.95	21.82	18.35	13.87	10.40
15:00:00	6.39	22.16	13	7.41	22.05	16.54	14.64	9.13
15:15:00	6.42	32.56	41.26	7.04	23.54	20.99	16.50	13.95
15:30:00	7.86	43.83	22.91	7.09	27.78	21.41	20.69	14.32
15:45:00	7.89	22.58	17.76	7.18	28.29	22.00	21.10	14.82
16:00:00	7.68	14.44	11.28	7.25	27.11	21.24	19.87	13.99
16:15:00	7.87	17.84	10.55	7.54	26.25	20.75	18.71	13.21
16:30:00	8.16	11.53	8.72	7.89	22.04	14.24	14.15	6.35
16:45:00	9.22	11.16	8.62	8.16	15.51	11.39	7.35	3.22
17:00:00	9.99	9.87	8.82	8.58	12.97	9.60	4.38	1.01
17:15:00	9.85	7.52	9.14	9.02	11.58	9.17	2.57	0.15
17:30:00	8.59	6.64	9.68	9.16	9.34	9.00	0.18	-0.17
17:45:00	9.54	6.06	11.65	9.44	8.25	9.58	-1.19	0.14
18:00:00	10.8	5.8	10.75	9.75	7.18	10.01	-2.58	0.25

## Wednesday, January 13, 2021

Time	Turbidity (NTU)			Rolling Average Turbidity (NTU)			Difference (NTU)	
	Ambient	3rd Street	Carroll Street	Ambient	3rd Street	Carroll Street	3rd St - Ambient	Carroll St - Ambient
7:00:00	5.39	4.94	11.08	5.30	4.54	9.79	-0.76	4.48
7:15:00	5.68	5.61	10.15	5.36	4.83	10.03	-0.52	4.67
7:30:00	5.63	6.92	9.74	5.74	5.35	10.15	-0.39	4.41
7:45:00	5.93	7.53	9.68	5.62	6.01	10.08	0.40	4.47
8:00:00	5.14	7.29	9.46	5.55	6.46	10.02	0.90	4.47
8:15:00	4.87	8.89	10.51	5.45	7.25	9.91	1.80	4.46
8:30:00	5.07	8.8	11.49	5.33	7.89	10.18	2.56	4.85
8:45:00	5.84	9.62	16.06	5.37	8.43	11.44	3.06	6.07
9:00:00	--	8.88	17.11	5.23	8.70	12.93	3.47	7.70
9:15:00	6.03	9.68	14.76	5.45	9.17	13.99	3.72	8.53
9:30:00	5.45	10.53	14.6	5.60	9.50	14.80	3.90	9.21
9:45:00	5.26	10.6	15.1	5.65	9.86	15.53	4.22	9.88
10:00:00	6.4	11.11	14.69	5.79	10.16	15.25	4.38	9.47
10:15:00	4.95	10.6	13.6	5.62	10.50	14.55	4.89	8.93
10:30:00	4.97	10.37	13.05	5.41	10.64	14.21	5.24	8.80
10:45:00	5.38	10.55	11.6	5.39	10.65	13.61	5.25	8.22
11:00:00	5.89	9.54	11.01	5.52	10.43	12.79	4.92	7.27
11:15:00	5.3	9.07	9.64	5.30	10.03	11.78	4.73	6.48
11:30:00	6.18	9.51	9.07	5.54	9.81	10.87	4.26	5.33
11:45:00	5.33	8.14	10.22	5.62	9.36	10.31	3.75	4.69
12:00:00	8.33	7.62	10.41	6.21	8.78	10.07	2.57	3.86
12:15:00	7.96	7.24	11.56	6.62	8.32	10.18	1.70	3.56
12:30:00	6.23	7.69	12.7	6.81	8.04	10.79	1.23	3.99
12:45:00	6.51	8.44	12.87	6.87	7.83	11.55	0.95	4.68
13:00:00	6.8	8.39	11.7	7.17	7.88	11.85	0.71	4.68
13:15:00	8.14	9.26	11.39	7.13	8.20	12.04	1.08	4.92
13:30:00	6.23	8.77	10.77	6.78	8.51	11.89	1.73	5.10
13:45:00	6.63	9.11	9.85	6.86	8.79	11.32	1.93	4.45
14:00:00	6.36	7.92	9.61	6.83	8.69	10.66	1.86	3.83
14:15:00	6.79	8.94	9.4	6.83	8.80	10.20	1.97	3.37
14:30:00	6.43	8.05	9.47	6.49	8.56	9.82	2.07	3.33
14:45:00	6.65	7.56	9.38	6.57	8.32	9.54	1.74	2.97
15:00:00	5.9	11.76	9.4	6.43	8.85	9.45	2.42	3.03
15:15:00	6.1	20.48	8.93	6.37	11.36	9.32	4.98	2.94
15:30:00	--	16.55	9.19	6.27	12.88	9.27	6.61	3.00
15:45:00	5.83	11.1	9.18	6.12	13.49	9.22	7.37	3.10
16:00:00	5.72	9.86	8.91	5.89	13.95	9.12	8.06	3.23
16:15:00	5.43	9.37	8.59	5.77	13.47	8.96	7.70	3.19
16:30:00	5.37	7.84	8.82	5.59	10.94	8.94	5.36	3.35
16:45:00	5.12	7.08	8.77	5.49	9.05	8.85	3.56	3.36
17:00:00	5.59	6.71	8.59	5.45	8.17	8.74	2.73	3.29
17:15:00	6.28	6.38	8.96	5.56	7.48	8.75	1.92	3.19
17:30:00	5.17	6.44	8.8	5.51	6.89	8.79	1.38	3.28
17:45:00	5.97	5.5	8.9	5.63	6.42	8.80	0.80	3.18
18:00:00	5.72	5.72	9.41	5.75	6.15	8.93	0.40	3.19

## Thursday, January 14, 2021

Time	Turbidity (NTU)			Rolling Average Turbidity (NTU)			Difference (NTU)	
	Ambient	3rd Street	Carroll Street	Ambient	3rd Street	Carroll Street	3rd St - Ambient	Carroll St - Ambient
7:00:00	4.88	4.27	9.23	4.96	4.03	7.62	-0.93	2.66
7:15:00	4.56	4.66	8.99	4.78	4.17	8.20	-0.61	3.42
7:30:00	5.34	4.57	9.36	4.83	4.30	8.56	-0.53	3.74
7:45:00	6.1	6.12	9.53	5.06	4.75	8.97	-0.31	3.92
8:00:00	5.31	6.37	10.34	5.24	5.20	9.49	-0.04	4.25
8:15:00	4.97	5.87	10.04	5.26	5.52	9.65	0.26	4.40
8:30:00	8.84	6.17	28.37	6.11	5.82	13.53	-0.29	7.42
8:45:00	4.97	8.97	13.71	6.04	6.70	14.40	0.66	8.36
9:00:00	4.61	7.31	13.32	5.74	6.94	15.16	1.20	9.42
9:15:00	5.91	9	16.33	5.86	7.46	16.35	1.60	10.49
9:30:00	5.83	9.67	15.91	6.03	8.22	17.53	2.19	11.50
9:45:00	6.31	9.7	24.2	5.53	8.93	16.69	3.40	11.17
10:00:00	4.93	9.68	18.95	5.52	9.07	17.74	3.55	12.22
10:15:00	5.63	9.67	19.12	5.72	9.54	18.90	3.82	13.18
10:30:00	5.13	11.55	13.7	5.57	10.05	18.38	4.49	12.81
10:45:00	5.22	12.5	13.27	5.44	10.62	17.85	5.18	12.40
11:00:00	5.33	11.46	16.83	5.25	10.97	16.37	5.72	11.13
11:15:00	5.62	11.59	15.32	5.39	11.35	15.65	5.97	10.26
11:30:00	5.14	10.81	13.75	5.29	11.58	14.57	6.29	9.29
11:45:00	5.29	9.95	13.76	5.32	11.26	14.59	5.94	9.27
12:00:00	5.27	9.07	12.18	5.33	10.58	14.37	5.25	9.04
12:15:00	4.91	11.16	15.43	5.25	10.52	14.09	5.27	8.84
12:30:00	4.44	12.26	10.66	5.01	10.65	13.16	5.64	8.15
12:45:00	5.1	11.21	8.73	5.00	10.73	12.15	5.73	7.15
13:00:00	4.74	10.51	10.81	4.89	10.84	11.56	5.95	6.67
13:15:00	4.43	10	31.1	4.72	11.03	15.35	6.30	10.62
13:30:00	3.88	8.66	23.33	4.52	10.53	16.93	6.01	12.41
13:45:00	5.33	11.44	27.8	4.70	10.36	20.35	5.67	15.66
14:00:00	4.54	13.46	23.66	4.58	10.81	23.34	6.23	18.76
14:15:00	4.34	15.53	26.4	4.50	11.82	26.46	7.31	21.95
14:30:00	4.99	15.32	51.33	4.62	12.88	30.50	8.27	25.89
14:45:00	4.43	19.9	28.89	4.73	15.13	31.62	10.40	26.89
15:00:00	3.88	16.92	15.75	4.44	16.23	29.21	11.79	24.77
15:15:00	7.77	17.63	12.22	5.08	17.06	26.92	11.98	21.84
15:30:00	4.62	18.21	15.35	5.14	17.60	24.71	12.46	19.57
15:45:00	4.29	17.52	14.03	5.00	18.04	17.25	13.04	12.25
16:00:00	4.11	14.44	9.74	4.93	16.94	13.42	12.01	8.48
16:15:00	4.25	7.74	8.99	5.01	15.11	12.07	10.10	7.06
16:30:00	3.94	8.87	7.69	4.24	13.36	11.16	9.11	6.92
16:45:00	4.87	8.7	7.79	4.29	11.45	9.65	7.16	5.36
17:00:00	9.52	7.92	7.26	5.34	9.53	8.29	4.20	2.96
17:15:00	9.85	7.09	6.69	6.49	8.06	7.68	1.58	1.20
17:30:00	6.81	6.33	7.17	7.00	7.78	7.32	0.78	0.32
17:45:00	9.78	6.15	8.04	8.17	7.24	7.39	-0.93	-0.78
18:00:00	5.9	5.78	8.8	8.37	6.65	7.59	-1.72	-0.78

## Friday, January 15, 2021

Time	Turbidity (NTU)			Rolling Average Turbidity (NTU)			Difference (NTU)	
	Ambient	3rd Street	Carroll Street	Ambient	3rd Street	Carroll Street	3rd St - Ambient	Carroll St - Ambient
7:00:00	6.45	4.12	8.12	5.67	4.24	7.07	-1.44	1.39
7:15:00	6.46	4.37	8.64	5.95	4.27	7.51	-1.68	1.56
7:30:00	6.21	5.23	8.6	6.10	4.47	7.97	-1.63	1.87
7:45:00	6.86	7.52	11.52	6.31	5.12	8.86	-1.19	2.55
8:00:00	6.02	6.57	12.31	6.40	5.56	9.84	-0.84	3.44
8:15:00	5.87	5.24	11.41	6.28	5.79	10.50	-0.50	4.21
8:30:00	5.99	5.92	10.7	6.19	6.10	10.91	-0.09	4.72
8:45:00	6.94	6.48	12.53	6.34	6.35	11.69	0.01	5.36
9:00:00	6.48	6.34	11.97	6.26	6.11	11.78	-0.15	5.52
9:15:00	7.5	6.98	10.64	6.56	6.19	11.45	-0.36	4.89
9:30:00	6.49	6.82	15.32	6.68	6.51	12.23	-0.17	5.55
9:45:00	7.25	9.95	14.49	6.93	7.31	12.99	0.38	6.06
10:00:00	5.8	11.42	15.54	6.70	8.30	13.59	1.60	6.89
10:15:00	6.66	12.18	13.46	6.74	9.47	13.89	2.73	7.15
10:30:00	7.24	11.99	16.3	6.69	10.47	15.02	3.78	8.33
10:45:00	6.47	13.31	22.63	6.68	11.77	16.48	5.09	9.80
11:00:00	6.4	13.24	27.74	6.51	12.43	19.13	5.91	12.62
11:15:00	6.35	14.43	33.15	6.62	13.03	22.66	6.41	16.03
11:30:00	6.68	11.49	28.05	6.63	12.89	25.57	6.26	18.95
11:45:00	6.03	12.41	22.3	6.39	12.98	26.77	6.59	20.39
12:00:00	6.28	15.19	18.43	6.35	13.35	25.93	7.00	19.59
12:15:00	6.04	15.41	19.67	6.28	13.79	24.32	7.51	18.04
12:30:00	5.88	12.57	15.29	6.18	13.41	20.75	7.23	14.57
12:45:00	4.81	12.56	15.84	5.81	13.63	18.31	7.82	12.50
13:00:00	6.08	13.07	17.09	5.82	13.76	17.26	7.94	11.45
13:15:00	5.81	12.73	18.9	5.72	13.27	17.36	7.54	11.63
13:30:00	5.38	12.59	24.89	5.59	12.70	18.40	7.11	12.81
13:45:00	5.15	10.87	21.8	5.45	12.36	19.70	6.92	14.26
14:00:00	5.7	13.59	34.25	5.62	12.57	23.39	6.95	17.76
14:15:00	6.67	13.1	20.96	5.74	12.58	24.16	6.83	18.42
14:30:00	5.34	12.78	28.67	5.65	12.59	26.11	6.94	20.47
14:45:00	5.83	15.67	20.76	5.74	13.20	25.29	7.46	19.55
15:00:00	5.6	32.48	15.27	5.83	17.52	23.98	11.70	18.15
15:15:00	4.97	21.02	15.4	5.68	19.01	20.21	13.33	14.53
15:30:00	5.8	15.44	11.07	5.51	19.48	18.23	13.97	12.73
15:45:00	6.92	12.06	9.61	5.82	19.33	14.42	13.51	8.60
16:00:00	5.47	9.53	8.57	5.75	18.11	11.98	12.35	6.23
16:15:00	5.05	8.17	8.51	5.64	13.24	10.63	7.60	4.99
16:30:00	10.93	7.13	9.31	6.83	10.47	9.41	3.63	2.58
16:45:00	9.69	6.66	11.08	7.61	8.71	9.42	1.10	1.80
17:00:00	8.84	6.02	10.89	8.00	7.50	9.67	-0.49	1.68
17:15:00	6.02	5.58	11.86	8.11	6.71	10.33	-1.39	2.22
17:30:00	7.2	5.59	10.28	8.54	6.20	10.68	-2.34	2.15
17:45:00	6.77	5.37	10.52	7.70	5.84	10.93	-1.86	3.22
18:00:00	6.47	5.29	9.91	7.06	5.57	10.69	-1.49	3.63