

**GOWANUS CANAL SUPERFUND SITE
RTA1 REMEDIAL CONSTRUCTION
Water Quality Monitoring Weekly Data Summary**

PERIOD: February 22nd to February 26th, 2021

Date of Report: March 03, 2021

Report Contents

- Scope of Monitoring
- Report of Exceedances
- Turbidity Buoy Data
- Summary of Visual Observations

Prepared by

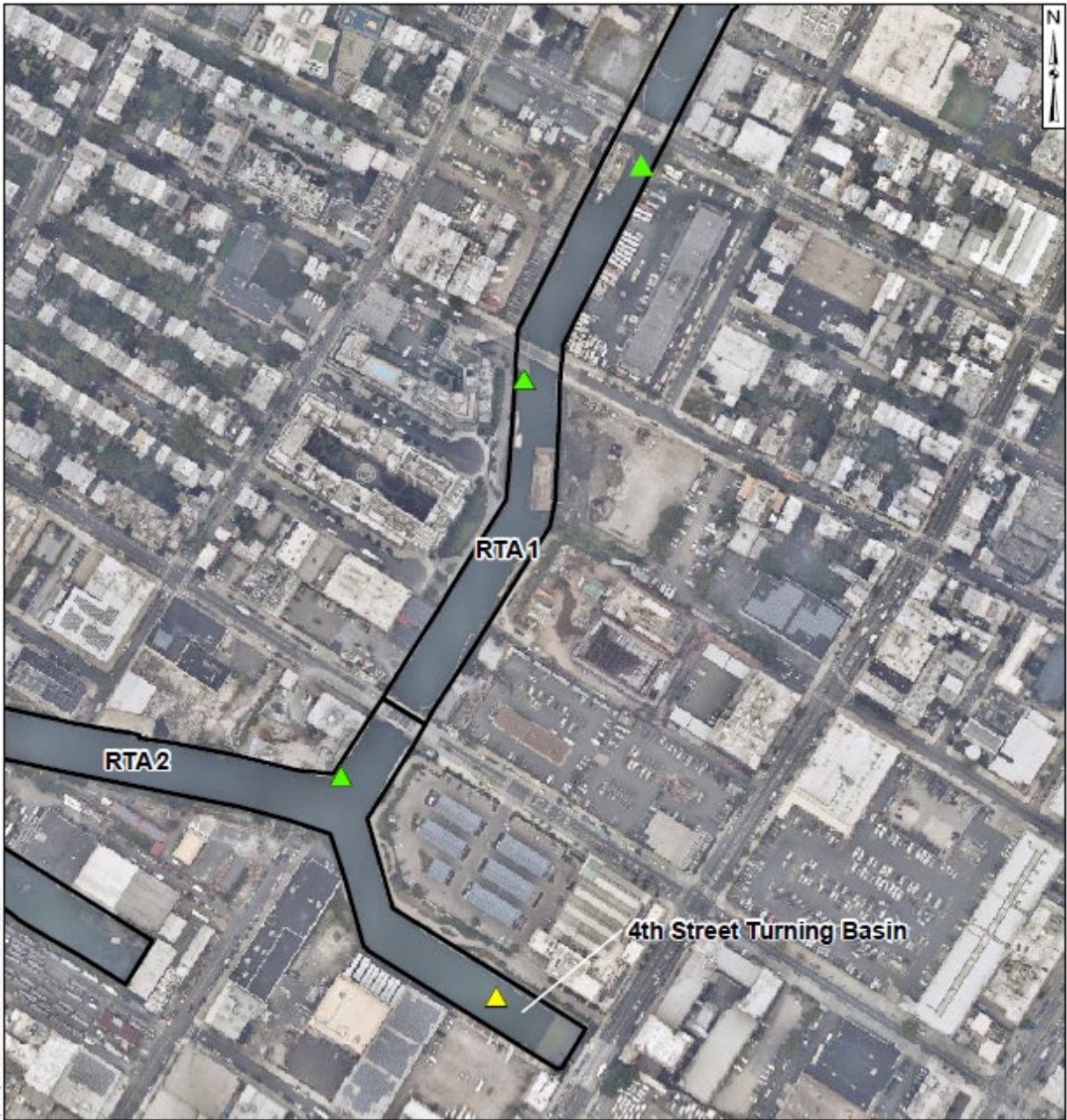
B&B Engineers & Geologists 
of new york, p.c.

an affiliate of Geosyntec Consultants

1255 Roberts Blvd, Suite 200
Kennesaw, GA 30144
Project Number JR0289A

1. SCOPE OF MONITORING

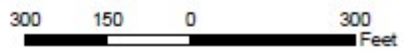
The following report summarizes water quality monitoring data collected during the week of February 22, 2021. In accordance with the Water Quality Monitoring Plan for In-waterway Construction Activities (WQMP) three turbidity buoys were deployed to monitor turbidity at the start of dredging between Carroll Street Bridge and 3rd Street Bridge. One turbidity buoy was deployed just south of the 3rd Street Bridge outside of the air curtain and traditional turbidity curtain. This buoy is referred to as the 3rd Street Sentinel Buoy. A second turbidity buoy was deployed just south of the Carroll Street Bridge and is referred to as the Carroll Street Sentinel Buoy. The third turbidity buoy was deployed in the Fourth Street Turning Basin in order to monitor background turbidity unaffected by in-water construction activities. This turbidity buoy is referred to as the Ambient Buoy. Prior to dredging north of the Union Street Bridge, on January 22, 2021 a fourth turbidity buoy was deployed just south of the Union Street Bridge and is referred to as the Union Street Sentinel Buoy. A map indicating the approximate locations of the turbidity buoys is provided in **Figure 1**. Each turbidity buoy was equipped with a YSI EXO3 water quality meter with optical turbidity sensor. The buoys were field calibrated and programmed such that readings were collected every 15 minutes. After each measurement, the turbidity data were transmitted to a File Transfer Portal (FTP) site via telemetry. This report presents a summary of turbidity data collected from the ambient and sentinel buoys between 7 AM and 6 PM each day during the week of February 22nd. Daily turbidity data tables are provided in **Appendix A**. No handheld measurements were collected during this reporting period. Visual observations of turbidity and sheen are summarized in Section 4.



\\reserving\Gowanus\PEA\03_GIS\mxd\Canal_Whole\Turbidity Buoy Locations.mxd; okatimarc; 11/20/2020

Legend

-  Ambient Buoy
-  Sentinel Buoy
-  RTA Boundary



Turbidity Buoy Locations

Gowanus Canal, Brooklyn, NY

B&B Engineers & Geologists
of new york, p.c.

an affiliate of Geosyntec Consultants

Kennesaw, GA

February 2021

Figure

1

2. REPORT OF EXCEEDANCES

No exceedances of the numerical action criterion were observed during the reporting period. Exceedances of the numerical trigger criterion were observed at the Union Street Sentinel Buoy on February 22nd, 23rd, 24th, 25th, and 26th. Exceedances of the numerical trigger criterion were observed at the Carroll Street Sentinel Buoy on February 24th. Further information is provided in Section 2.1. Refer to the WQMP for further information regarding the Trigger and Action Criteria. Threshold criteria are summarized as follows:

- **Trigger criterion** – Any of the following:
 - The rolling average of the relevant sentinel buoy turbidity measurements over a one-hour period exceeds the rolling average of the ambient buoy turbidity measurements by 20 NTU excluding any eliminated outlier measurements and in-waterway construction activities cannot be immediately excluded as the source following consultation with EPA; or
 - Either an oil sheen or a turbidity plume is visually observed at the relevant sentinel buoy and in-waterway construction activities are readily identified as the source.
- **Action criterion** – Any of the following:
 - The rolling average of the turbidity measurements of the sentinel buoy outside of RTA1 over a one-hour period exceeds the rolling average of the ambient buoy turbidity measurements by 40 NTU excluding any eliminated outlier measurements and in-waterway construction activities cannot be immediately excluded as the source following consultation with EPA; or
 - Either an oil sheen or a turbidity plume is visually observed outside of RTA1 and any deployed engineering controls and in-waterway construction activities are readily identified as the source.

An outlier is defined as a reading that is outside the range of 50 to 200 percent of the average of the three previous readings. In addition, to be considered an outlier, the subsequent reading must return to a range of 75 to 133 percent of the average of the three readings preceding the outlier.

2.1 Response to Criteria Exceedances

The trigger level criterion serves to provide early notification to the contractor of construction activities that may lead to an exceedance of the action level criterion. In the event of an exceedance to the trigger criterion, the contractor will not be stopped and the contractor will be directed to investigate the source of the exceedance and evaluate Best Management Practices (BMPs). In the event of an exceedance to the action level criterion, in-waterway construction activities may be slowed or temporarily suspended as necessary while the contractor investigates the source of the exceedance and appropriate mitigation and corrective measures are determined. A more detailed description of responses to exceedances of the trigger and action level criteria is provided in Section 4.2 of the WQMP.

On February 22nd, exceedances to the numerical trigger criterion were observed at the Union Street Sentinel Buoy from 10:15 AM to 11:00 AM. On February 23rd, an exceedance to the numerical trigger criterion was observed at the Union Street Sentinel Buoy at 11:15 AM. On February 24th, exceedances to the numerical trigger criterion were observed at the Union Street Sentinel Buoy from 10:15 AM to 10:30 AM and from 11:45 AM to 1:45 PM. Also, on February 24th, exceedances to the numerical trigger criterion were observed at the Carroll Street Sentinel Buoy from 12:15 to 12:30. On February 25th, exceedances to the numerical trigger criterion were observed at the Union Street Sentinel Buoy from 4:00 PM to 4:45 PM. On February 26th, exceedances to the numerical trigger criterion were observed at the Union Street Sentinel Buoy from 1:00 PM to 2:30 PM and from 2:45 PM to 3:30 PM. Exceedances to the trigger criterion were a result of sediment resuspension during mini hopper changeouts in shallow water.

3. TURBIDITY BUOY DATA

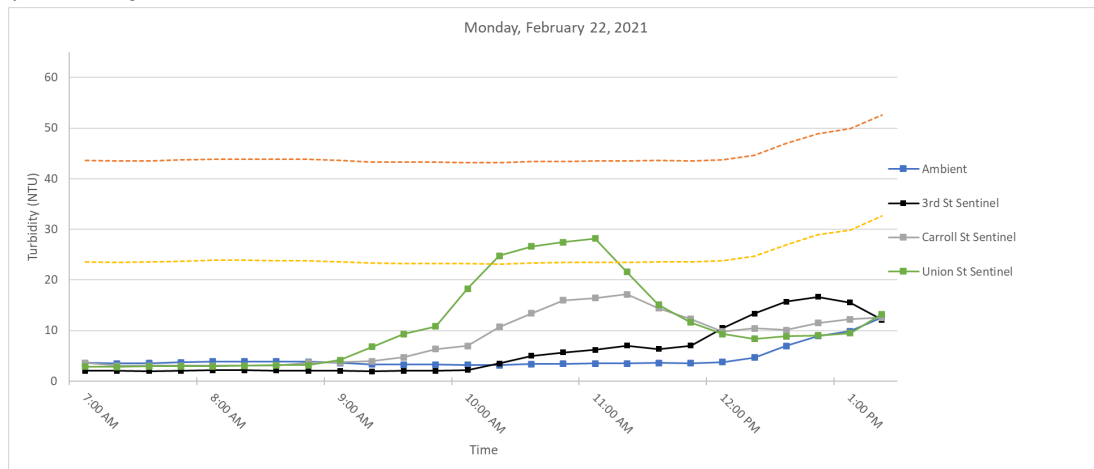
The following section provides turbidity data for the sentinel and ambient turbidity buoys from 7 AM to 6 PM from February 22 to February 26, 2021. Exceedances of the numerical trigger criterion were observed on February 22nd, 23rd, 24th, 25th, and 26th at the Union Street Sentinel Buoy. Exceedances to the numerical trigger criterion were observed at the Carroll Street Sentinel Buoy on February 24th. Section 2.1 contains further information on the exceedances. No exceedances to the numerical rolling average action criterion were observed during the reporting period. **Table 1** below provides a summary of the turbidity data for the reporting period.

Table 1. Daily average and maximum differences between the rolling average turbidity readings from RTA1 sentinel buoys and the ambient buoy between 7 AM and 6 PM

Date	Average Rolling Average Difference (NTU)			Maximum Rolling Average Difference (NTU)		
	3rd St - Ambient	Carroll St - Ambient	Union St - Ambient	3rd St - Ambient	Carroll St - Ambient	Union St - Ambient
Monday February 22, 2021	0.84	2.83	4.88	8.73	13.70	24.69
Tuesday February 23, 2021	2.83	6.21	9.41	8.61	13.89	20.40
Wednesday February 24, 2021	3.12	7.31	11.20	11.87	21.94	28.20
Thursday February 25, 2021	3.00	6.64	11.09	7.11	10.66	24.63
Friday February 26, 2021	5.61	7.27	11.87	15.01	15.41	31.35

3.1 Monday, February 22, 2021

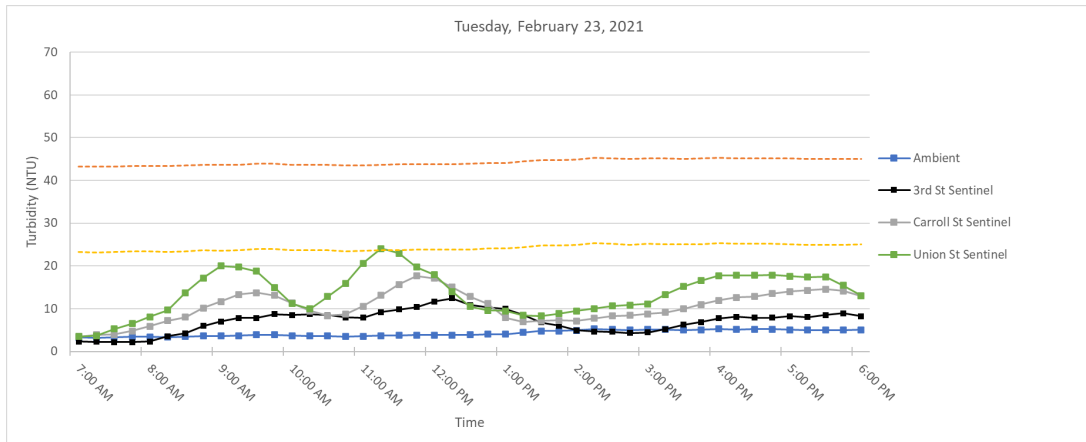
Figure 2. Hourly rolling average turbidity readings on Monday, February 22, 2021 from 7 AM to 6 PM.



Note: At 7:30 AM, a spike in turbidity at the 3rd Street Sentinel Buoy of 6.35 NTU was eliminated as an outlier. At 2:15 PM, a spike in turbidity at the 3rd Street Sentinel Buoy of 19.29 NTU was eliminated as an outlier. All outliers were eliminated in accordance with the outlier analysis defined in Section 2 and the WQMP.

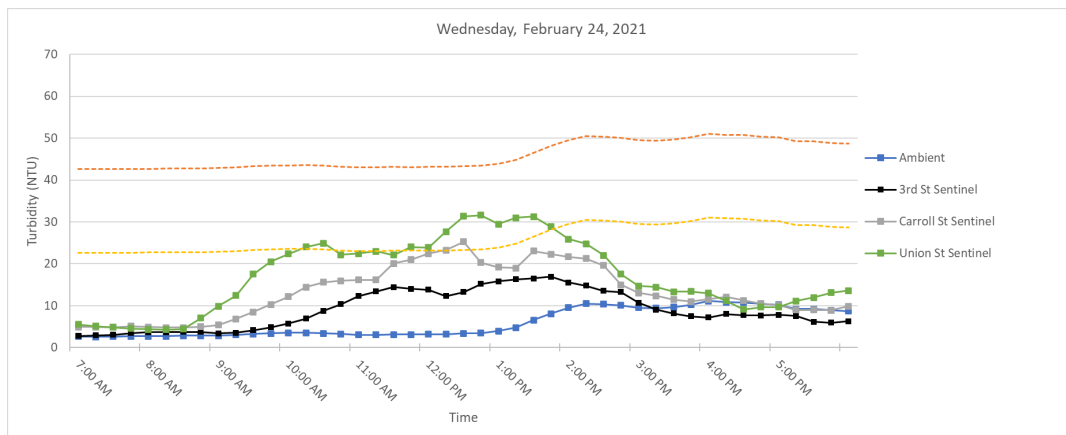
3.2 Tuesday, February 23, 2021

Figure 3. Hourly rolling average turbidity readings on Tuesday, February 23, 2021 from 7 AM to 6 PM.



3.3 Wednesday, February 24, 2021

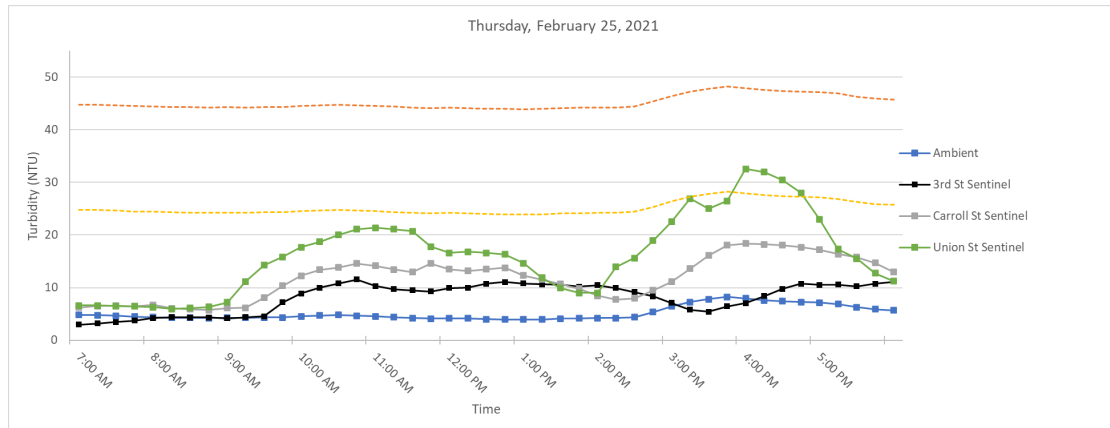
Figure 4. Hourly rolling average turbidity readings on Wednesday, February 24, 2021 from 7 AM to 6 PM.



Note: At 12:30 PM, a spike in turbidity at the Carroll Street Sentinel Buoy of 40.99 NTU was eliminated as an outlier. At 11:30 AM, a spike in turbidity at the Union Street Sentinel Buoy of 50.89 NTU was eliminated as an outlier. All outliers were eliminated in accordance with the outlier analysis defined in Section 2 and the WQMP.

1.4 Thursday, February 25, 2021

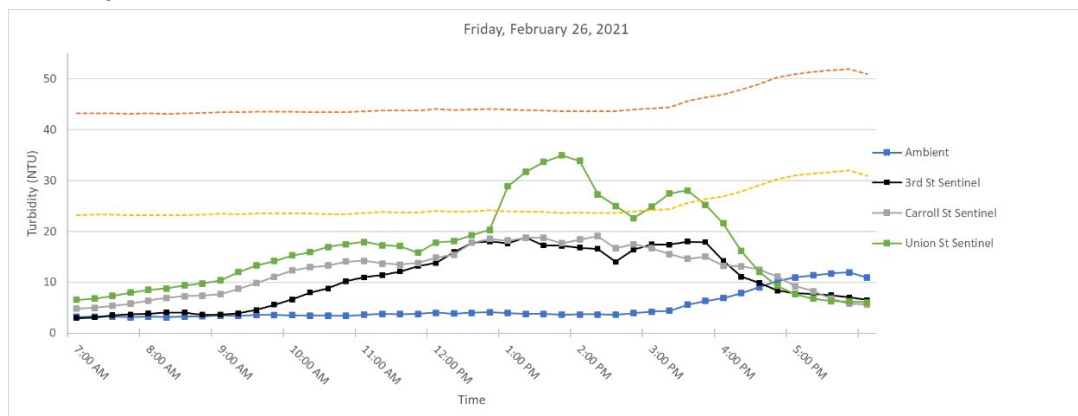
Figure 5. Hourly rolling average turbidity readings on Thursday, February 25, 2021 from 7 AM to 6 PM.



Note: At 11:45 AM, a spike in turbidity at the 3rd Street Sentinel Buoy of 21.43 NTU was eliminated as an outlier. At 1:15 PM, a spike in turbidity at the 3rd Street Sentinel Buoy of 33.64 NTU was eliminated as an outlier. At 2:30 PM, a spike in turbidity at the Union Street Sentinel Buoy of 46.88 NTU was eliminated as an outlier. All outliers were eliminated in accordance with the outlier analysis defined in Section 2 and the WQMP.

1.5 Friday, February 26, 2021

Figure 6. Hourly rolling average turbidity readings on Friday, February 26, 2021 from 7 AM to 6 PM.



Note: At 12:15 PM, a spike in turbidity at the Union Street Sentinel Buoy of 43.65 NTU was eliminated as an outlier in accordance with the outlier analysis defined in Section 2 and the WQMP.

SUMMARY OF VISUAL OBSERVATIONS

During the Phase I dredging with the environmental clamshell bucket some sheen was observed during dredging. This sheen was localized in the area of dredging and did not migrate outside of RTA1.

APPENDIX A
Turbidity Data Tables

Monday, February 22, 2021

Time	Turbidity (NTU)				Rolling Average Turbidity (NTU)				Difference (NTU)		
	Ambient	3rd Street	Carroll Street	Union Street	Ambient	3rd Street	Carroll Street	Union Street	3rd St - Ambient	Carroll St - Ambient	Union St - Ambient
7:00:00	3.24	1.91	3.01	2.72	3.58	2.02	3.57	2.89	-1.55	-0.01	-0.69
7:15:00	3.43	2.11	3	2.82	3.50	2.01	3.05	2.83	-1.49	-0.45	-0.67
7:30:00	3.64	--	3.03	3.25	3.54	1.99	3.04	2.92	-1.56	-0.50	-0.62
7:45:00	4.72	2.09	3.11	2.93	3.73	2.04	3.02	2.92	-1.70	-0.71	-0.81
8:00:00	4.42	2.4	3.01	2.98	3.89	2.13	3.03	2.94	-1.76	-0.86	-0.95
8:15:00	3.28	1.88	3.06	3.24	3.90	2.12	3.04	3.04	-1.78	-0.86	-0.85
8:30:00	3.17	1.97	3.12	3.36	3.85	2.09	3.07	3.15	-1.76	-0.78	-0.69
8:45:00	3.6	1.89	5.9	3.31	3.84	2.05	3.64	3.16	-1.79	-0.20	-0.67
9:00:00	3.55	1.85	3.5	7.84	3.60	2.00	3.72	4.15	-1.61	0.11	0.54
9:15:00	2.95	1.98	4.16	16.16	3.31	1.91	3.95	6.78	-1.40	0.64	3.47
9:30:00	3.11	2.38	6.76	15.98	3.28	2.01	4.69	9.33	-1.26	1.41	6.05
9:45:00	3	1.93	11.32	10.68	3.24	2.01	6.33	10.79	-1.24	3.09	7.55
10:00:00	3.41	2.77	9.07	40.68	3.20	2.18	6.96	18.27	-1.02	3.76	15.06
10:15:00	3.15	8.33	22.17	40.23	3.12	8.33	10.70	24.75	0.35	7.57	21.62
10:30:00	4.17	9.47	17.77	25.64	3.37	4.98	13.42	26.64	1.61	10.05	23.27
10:45:00	3.53	5.84	19.49	19.97	3.45	5.67	15.96	27.44	2.22	12.51	23.99
11:00:00	3.14	4.5	13.65	14.35	3.48	6.18	16.43	28.17	2.70	12.95	24.69
11:15:00	3.4	6.96	12.82	7.81	3.48	7.02	17.18	21.60	3.54	13.70	18.12
11:30:00	3.74	4.87	8.44	7.71	3.60	6.33	14.43	15.10	2.73	10.84	11.50
11:45:00	3.79	12.78	6.86	8.23	3.52	6.99	12.25	11.61	3.47	8.73	8.09
12:00:00	4.84	23.43	7.23	8.31	3.78	10.51	9.80	9.28	6.73	6.02	5.50
12:15:00	7.53	18.71	16.88	9.79	4.66	13.35	10.45	8.37	8.69	5.79	3.71
12:30:00	14.82	18.6	11.16	10.33	6.94	15.68	10.11	8.87	8.73	3.17	1.93
12:45:00	13.68	9.74	15.31	8.54	8.93	16.65	11.49	9.04	7.72	2.56	0.11
13:00:00	8.6	7.12	10.49	10.54	9.89	15.52	12.21	9.50	5.63	2.32	-0.39
13:15:00	18.46	6.41	8.88	27.06	12.62	12.12	12.54	13.25	-0.50	-0.07	0.63
13:30:00	11.18	8.99	11.06	20.42	13.35	10.17	11.38	15.38	-3.18	-1.97	2.03
13:45:00	12.31	8.33	15.4	10.41	12.85	8.12	12.23	15.39	-4.73	-0.62	2.55
14:00:00	10.12	8.28	14.26	6.97	12.13	7.83	12.02	15.08	-4.31	-0.12	2.95
14:15:00	12.22	--	11.16	6.15	12.86	8.00	12.15	14.20	-4.86	-0.71	1.34
14:30:00	9.47	9.71	7.95	5.66	11.06	8.83	11.97	9.92	-2.23	0.91	-1.14
14:45:00	10.58	17.65	6.52	5.34	10.94	10.99	11.06	6.91	0.05	0.12	-4.03
15:00:00	10.39	14.88	7.27	14.81	10.56	12.63	9.43	7.79	2.07	-1.12	-2.77
15:15:00	8.29	12.27	10.65	14.38	10.19	13.63	8.71	9.27	3.44	-1.48	-0.92
15:30:00	6.57	10.57	11.57	19.92	9.06	13.02	8.79	12.02	3.96	-0.27	2.96
15:45:00	7.28	8.08	12.42	16.2	8.62	12.69	9.69	14.13	4.07	1.06	5.51
16:00:00	7.88	9.1	11	13.99	8.08	10.98	10.58	15.86	2.90	2.50	7.78
16:15:00	6.9	8.6	11.33	12.49	7.38	9.72	11.39	15.40	2.34	4.01	8.01
16:30:00	7.29	8.43	13.27	12.42	7.18	8.96	11.92	15.00	1.77	4.73	7.82
16:45:00	7.5	7.14	12.22	11.92	7.37	8.27	12.05	13.40	0.90	4.68	6.03
17:00:00	9.22	8.09	11.82	11.15	7.76	8.27	11.93	12.39	0.51	4.17	4.64
17:15:00	9.01	8.87	10.05	10.53	7.98	8.23	11.74	11.70	0.24	3.75	3.72
17:30:00	8.08	11.27	9.26	7.78	8.22	8.76	11.32	10.76	0.54	3.10	2.54
17:45:00	8.19	8.09	9.51	6.26	8.40	8.69	10.57	9.53	0.29	2.17	1.13
18:00:00	7.09	7.83	9.21	6.16	8.32	8.83	9.97	8.38	0.51	1.65	0.06

Tuesday, February 23, 2021

Time	Turbidity (NTU)				Rolling Average Turbidity (NTU)				Difference (NTU)		
	Ambient	3rd Street	Carroll Street	Union Street	Ambient	3rd Street	Carroll Street	Union Street	3rd St - Ambient	Carroll St - Ambient	Union St - Ambient
7:00:00	3.41	2.21	3.34	3.64	3.31	2.30	3.46	3.46	-1.01	0.15	0.15
7:15:00	3.15	2.24	5.8	4.76	3.20	2.25	3.93	3.72	-0.95	0.73	0.51
7:30:00	3.65	1.94	3.86	11.22	3.31	2.15	3.97	5.30	-1.16	0.66	1.99
7:45:00	3.46	2.3	7.57	9.51	3.41	2.15	4.79	6.53	-1.26	1.38	3.12
8:00:00	3.36	3.08	8.9	11.48	3.41	2.35	5.89	8.12	-1.05	2.49	4.72
8:15:00	3.07	8.26	9.74	11.3	3.34	3.56	7.17	9.65	0.23	3.84	6.32
8:30:00	3.82	5.77	10.21	25.35	3.47	4.27	8.06	13.77	0.80	4.58	10.30
8:45:00	4.45	10.49	14.47	28.44	3.63	5.98	10.18	17.22	2.35	6.55	13.58
9:00:00	3.37	7.37	15.13	23.64	3.61	6.99	11.69	20.04	3.38	8.08	16.43
9:15:00	3.62	7.36	17.11	9.84	3.67	7.85	13.33	19.71	4.18	9.67	16.05
9:30:00	4.34	8.1	11.95	6.74	3.92	7.82	13.77	18.80	3.90	9.85	14.88
9:45:00	3.72	10.27	7.09	6.25	3.90	8.72	13.15	14.98	4.82	9.25	11.08
10:00:00	3.49	9.64	5.48	9.42	3.71	8.55	11.35	11.18	4.84	7.64	7.47
10:15:00	3.14	8.32	5.63	17.53	3.66	8.74	9.45	9.96	5.08	5.79	6.29
10:30:00	3.48	6.09	11.82	24.34	3.63	8.48	8.39	12.86	4.85	4.76	9.22
10:45:00	3.47	5.64	13.54	21.94	3.46	7.99	8.71	15.90	4.53	5.25	12.44
11:00:00	4.2	9.82	16.39	29.9	3.56	7.90	10.57	20.63	4.35	7.02	17.07
11:15:00	4.11	16.12	18.17	26.71	3.68	9.20	13.11	24.08	5.52	9.43	20.40
11:30:00	3.41	11.6	18.28	12.02	3.73	9.85	15.64	22.98	6.12	11.91	19.25
11:45:00	3.88	8.84	22.13	8.01	3.81	10.40	17.70	19.72	6.59	13.89	15.90
12:00:00	3.71	12.16	10.55	13.15	3.86	11.71	17.10	17.96	7.85	13.24	14.10
12:15:00	3.9	13.35	6.3	10.23	3.80	12.41	15.09	14.02	8.61	11.28	10.22
12:30:00	4.56	8.33	6.96	9.01	3.89	10.86	12.84	10.48	6.96	8.95	6.59
12:45:00	4.17	9.18	10.07	7.64	4.04	10.37	11.20	9.61	6.33	7.16	5.56
13:00:00	3.99	6.74	5.69	7.32	4.07	9.95	7.91	9.47	5.89	3.85	5.40
13:15:00	5.54	5	5.72	8.18	4.43	8.52	6.95	8.48	4.09	2.52	4.04
13:30:00	5.6	4.69	7.27	9.52	4.77	6.79	7.14	8.33	2.02	2.37	3.56
13:45:00	4.56	4.58	7.63	11.73	4.77	6.04	7.28	8.88	1.27	2.50	4.11
14:00:00	4.83	3.58	9.49	10.7	4.90	4.92	7.16	9.49	0.01	2.26	4.59
14:15:00	5.92	5.46	8.79	9.92	5.29	4.66	7.78	10.01	-0.63	2.49	4.72
14:30:00	4.92	4.48	8.45	11.35	5.17	4.56	8.33	10.64	-0.61	3.16	5.48
14:45:00	4.64	3.57	8.03	10.5	4.97	4.33	8.48	10.84	-0.64	3.50	5.87
15:00:00	5.57	5.23	9.33	13.09	5.18	4.46	8.82	11.11	-0.71	3.64	5.94
15:15:00	4.58	7.43	11.04	21.77	5.13	5.23	9.13	13.33	0.11	4.00	8.20
15:30:00	5.32	10.35	13.02	19.25	5.01	6.21	9.97	15.19	1.21	4.97	10.19
15:45:00	5.42	7.8	13.53	18.1	5.11	6.88	10.99	16.54	1.77	5.88	11.44
16:00:00	5.5	7.9	12.9	16.62	5.28	7.74	11.96	17.77	2.46	6.69	12.49
16:15:00	5.05	7.07	12.75	13.27	5.17	8.11	12.65	17.80	2.94	7.47	12.63
16:30:00	4.9	6.26	12.05	21.74	5.24	7.88	12.85	17.80	2.64	7.61	12.56
16:45:00	5.06	10.32	16.31	19.67	5.19	7.87	13.51	17.88	2.68	8.32	12.69
17:00:00	5	9.8	16.02	16.58	5.10	8.27	14.01	17.58	3.17	8.90	12.47
17:15:00	4.91	6.82	14.35	15.64	4.98	8.05	14.30	17.38	3.07	9.31	12.40
17:30:00	5	9.37	14.05	13.72	4.97	8.51	14.56	17.47	3.54	9.58	12.50
17:45:00	4.94	8.45	9.96	11.87	4.98	8.95	14.14	15.50	3.97	9.16	10.51
18:00:00	5.49	6.78	10.51	7.57	5.07	8.24	12.98	13.08	3.18	7.91	8.01

Wednesday, February 24, 2021

Time	Turbidity (NTU)				Rolling Average Turbidity (NTU)				Difference (NTU)		
	Ambient	3rd Street	Carroll Street	Union Street	Ambient	3rd Street	Carroll Street	Union Street	3rd St - Ambient	Carroll St - Ambient	Union St - Ambient
7:00:00	2.63	3.02	4.75	4.49	2.62	2.74	4.91	5.52	0.12	2.29	2.89
7:15:00	2.57	3.25	4.34	4.15	2.56	2.89	4.87	5.12	0.32	2.31	2.56
7:30:00	2.77	3.14	4.69	4.43	2.60	3.04	4.81	4.81	0.44	2.21	2.20
7:45:00	2.75	4.74	6.59	4.34	2.66	3.47	5.10	4.56	0.81	2.44	1.90
8:00:00	2.73	4.03	4.27	4.15	2.69	3.64	4.93	4.31	0.95	2.24	1.62
8:15:00	2.79	3.18	4.03	4.28	2.72	3.67	4.78	4.27	0.95	2.06	1.55
8:30:00	2.99	3.47	4.25	4.73	2.81	3.71	4.77	4.39	0.91	1.96	1.58
8:45:00	2.77	3.2	5.7	17.85	2.81	3.72	4.97	7.07	0.92	2.16	4.26
9:00:00	3.02	2.95	8.54	18.44	2.86	3.37	5.36	9.89	0.51	2.50	7.03
9:15:00	3.62	4.89	11.63	16.92	3.04	3.54	6.83	12.44	0.50	3.79	9.41
9:30:00	3.87	6.27	12.39	29.79	3.25	4.16	8.50	17.55	0.90	5.25	14.29
9:45:00	3.72	6.73	12.98	19.45	3.40	4.81	10.25	20.49	1.41	6.85	17.09
10:00:00	3.29	7.86	15.04	27.22	3.50	5.74	12.12	22.36	2.24	8.61	18.86
10:15:00	3.16	8.65	20.04	26.62	3.53	6.88	14.42	24.00	3.35	10.88	20.47
10:30:00	3	14.22	17.56	21.48	3.41	8.75	15.60	24.91	5.34	12.19	21.50
10:45:00	2.89	14.25	14.07	16.12	3.21	10.34	15.94	22.18	7.13	12.73	18.97
11:00:00	2.98	16.53	13.88	20.87	3.06	12.30	16.12	22.46	9.24	13.05	19.40
11:15:00	3.25	13.42	15.22	29.91	3.06	13.41	16.15	23.00	10.36	13.10	19.94
11:30:00	3.43	13.82	39.74	--	3.11	14.45	20.09	22.10	11.34	16.98	18.99
11:45:00	2.92	12.12	22.09	29.06	3.09	14.03	21.00	23.99	10.93	17.91	20.90
12:00:00	3.19	12.96	21.38	15.77	3.15	13.77	22.46	23.90	10.62	19.31	20.75
12:15:00	3.13	9.22	17.95	36.01	3.18	12.31	23.28	27.69	9.12	20.09	24.50
12:30:00	4.09	18.22	--	44.53	3.35	13.27	25.29	31.34	9.92	21.94	27.99
12:45:00	3.88	23.56	19.82	32.85	3.44	15.22	20.31	31.64	11.77	16.87	28.20
13:00:00	5.23	14.92	17.6	18.33	3.90	15.78	19.19	29.50	11.87	15.28	25.59
13:15:00	7.56	15.42	20.66	23.39	4.78	16.27	19.01	31.02	11.49	14.23	26.24
13:30:00	11.91	10.31	34.01	37.16	6.53	16.49	23.02	31.25	9.95	16.49	24.72
13:45:00	11.82	20.45	19.25	32.65	8.08	16.93	22.27	28.88	8.85	14.19	20.80
14:00:00	11.15	16.7	16.71	17.81	9.53	15.56	21.65	25.87	6.03	12.11	16.33
14:15:00	9.96	10.99	15.57	12.91	10.48	14.77	21.24	24.78	4.29	10.76	14.30
14:30:00	7.08	9.03	12.42	9.5	10.38	13.50	19.59	22.01	3.11	9.21	11.62
14:45:00	10.23	9.21	10.94	14.9	10.05	13.28	14.98	17.55	3.23	4.93	7.51
15:00:00	9.2	7.67	9.65	18.3	9.52	10.72	13.06	14.68	1.20	3.53	5.16
15:15:00	10.3	8.2	13.15	16.67	9.35	9.02	12.35	14.46	-0.33	2.99	5.10
15:30:00	11.49	6.68	11.26	7.39	9.66	8.16	11.48	13.35	-1.50	1.82	3.69
15:45:00	9.76	5.45	9.87	9.54	10.20	7.44	10.97	13.36	-2.75	0.78	3.16
16:00:00	14.64	7.76	13.63		11.08	7.15	11.51	12.98	-3.93	0.43	1.90
16:15:00	7.99	12.04	12.42	11.23	10.84	8.03	12.07	11.21	-2.81	1.23	0.37
16:30:00	9.99	6.66	8.9	8.24	10.77	7.72	11.22	9.10	-3.06	0.44	-1.67
16:45:00	9.55	6.53	7.75	9.5	10.39	7.69	10.51	9.63	-2.70	0.13	-0.76
17:00:00	8.73	5.88	8.01	9.79	10.18	7.77	10.14	9.69	-2.41	-0.04	-0.49
17:15:00	9.75	6.42	7.8	16.67	9.20	7.51	8.98	11.09	-1.70	-0.23	1.88
17:30:00	7.97	5.2	12.45	15.55	9.20	6.14	8.98	11.95	-3.06	-0.22	2.75
17:45:00	8.37	5.49	8.64	13.98	8.87	5.90	8.93	13.10	-2.97	0.06	4.22
18:00:00	8.7	8.29	12.3	11.99	8.70	6.26	9.84	13.60	-2.45	1.14	4.89

Thursday, February 25, 2021

Time	Turbidity (NTU)				Rolling Average Turbidity (NTU)				Difference (NTU)		
	Ambient	3rd Street	Carroll Street	Union Street	Ambient	3rd Street	Carroll Street	Union Street	3rd St - Ambient	Carroll St - Ambient	Union St - Ambient
7:00:00	4.67	3.14	8.19	7.42	4.82	3.00	6.26	6.60	-1.81	1.44	1.78
7:15:00	4.39	3.99	6.35	6.2	4.79	3.20	6.51	6.62	-1.59	1.72	1.83
7:30:00	4.47	4.12	5.97	6.04	4.64	3.45	6.59	6.50	-1.19	1.95	1.86
7:45:00	4.04	4.44	5.51	5.74	4.50	3.74	6.45	6.44	-0.75	1.95	1.94
8:00:00	4.44	5.36	7.48	6.07	4.40	4.21	6.70	6.29	-0.19	2.30	1.89
8:15:00	4.12	3.97	5.15	5.84	4.29	4.38	6.09	5.98	0.08	1.80	1.69
8:30:00	4.35	3.88	5.47	6.88	4.28	4.35	5.92	6.11	0.07	1.63	1.83
8:45:00	4.27	4.06	5.16	7.07	4.24	4.34	5.75	6.32	0.10	1.51	2.08
9:00:00	4.24	3.6	7.48	10.23	4.28	4.17	6.15	7.22	-0.11	1.86	2.93
9:15:00	4.31	6.37	7.6	25.77	4.26	4.38	6.17	11.16	0.12	1.91	6.90
9:30:00	4.53	4.73	14.71	21.52	4.34	4.53	8.08	14.29	0.19	3.74	9.95
9:45:00	4.36	17.36	16.75	14.75	4.34	7.22	10.34	15.87	2.88	6.00	11.53
10:00:00	5.34	12.43	14.69	16.23	4.56	8.90	12.25	17.70	4.34	7.69	13.14
10:15:00	4.99	9.12	13.25	15.33	4.71	10.00	13.40	18.72	5.30	8.69	14.01
10:30:00	4.82	10.24	9.81	32.33	4.81	10.78	13.84	20.03	5.97	9.03	15.22
10:45:00	3.9	8.62	18.58	27.04	4.68	11.55	14.62	21.14	6.87	9.93	16.45
11:00:00	3.59	10.99	14.37	15.93	4.53	10.28	14.14	21.37	5.75	9.61	16.84
11:15:00	4.66	9.49	11.14	14.8	4.39	9.69	13.43	21.09	5.30	9.04	16.69
11:30:00	4.25	8.03	10.94	13.56	4.24	9.47	12.97	20.73	5.23	8.72	16.49
11:45:00	4.19	--	17.9	17.75	4.12	9.28	14.59	17.82	5.16	10.47	13.70
12:00:00	4.23	11.25	13.22	21.07	4.18	9.94	13.51	16.62	5.76	9.33	12.44
12:15:00	3.45	11.18	12.75	16.98	4.16	9.99	13.19	16.83	5.83	9.03	12.68
12:30:00	3.86	12.52	12.87	13.63	4.00	10.75	13.54	16.60	6.75	9.54	12.60
12:45:00	4.07	9.32	12.17	12.19	3.96	11.07	13.78	16.32	7.11	9.82	12.36
13:00:00	4.03	9.6	10.69	9.26	3.93	10.77	12.34	14.63	6.85	8.41	10.70
13:15:00	4.36	--	9.23	7.34	3.95	10.66	11.54	11.88	6.70	7.59	7.93
13:30:00	4.15	10.81	8.36	7.18	4.09	10.56	10.66	9.92	6.47	6.57	5.83
13:45:00	4.27	11.04	8.54	9.15	4.18	10.19	9.80	9.02	6.02	5.62	4.85
14:00:00	4.22	10.4	5.58	12.03	4.21	10.46	8.48	8.99	6.26	4.27	4.79
14:15:00	4.12	7.53	7.05	34.1	4.22	9.95	7.75	13.96	5.72	3.53	9.74
14:30:00	5.25	5.98	10.43	--	4.40	9.15	7.99	15.62	4.75	3.59	11.21
14:45:00	8.97	6.67	15.81	20.46	5.37	8.32	9.48	18.94	2.96	4.12	13.57
15:00:00	9.67	4.9	16.67	23.52	6.45	7.10	11.11	22.53	0.65	4.66	16.08
15:15:00	8.41	3.93	18.01	29.57	7.28	5.80	13.59	26.91	-1.48	6.31	19.63
15:30:00	6.79	5.73	19.67	26.44	7.82	5.44	16.12	25.00	-2.38	8.30	17.18
15:45:00	7.29	11	20.12	32.53	8.23	6.45	18.06	26.50	-1.78	9.83	18.28
16:00:00	7.56	9.78	17.53	50.83	7.94	7.07	18.40	32.58	-0.88	10.46	24.63
16:15:00	8.01	11.63	15.8	20.47	7.61	8.41	18.23	31.97	0.80	10.61	24.36
16:30:00	7.46	10.72	17.3	22.13	7.42	9.77	18.08	30.48	2.35	10.66	23.06
16:45:00	6.12	10.52	17.67	14.12	7.29	10.73	17.68	28.02	3.44	10.40	20.73
17:00:00	6.55	10.07	17.84	7.38	7.14	10.54	17.23	22.99	3.40	10.09	15.85
17:15:00	6.27	9.94	13.37	22.48	6.88	10.58	16.40	17.32	3.69	9.51	10.43
17:30:00	5.11	10.07	12.69	11.45	6.30	10.26	15.77	15.51	3.96	9.47	9.21
17:45:00	5.53	13.15	11.97	8.2	5.92	10.75	14.71	12.73	4.83	8.79	6.81
18:00:00	5.12	12.32	8.89	6.65	5.72	11.11	12.95	11.23	5.39	7.24	5.52

Friday, February 26, 2021

Time	Turbidity (NTU)				Rolling Average Turbidity (NTU)				Difference (NTU)		
	Ambient	3rd Street	Carroll Street	Union Street	Ambient	3rd Street	Carroll Street	Union Street	3rd St - Ambient	Carroll St - Ambient	Union St - Ambient
7:00:00	3.28	3.29	5.01	7.18	3.19	2.99	4.83	6.54	-0.20	1.64	3.35
7:15:00	3.06	3.28	5.5	7.52	3.24	3.09	5.00	6.80	-0.15	1.76	3.56
7:30:00	2.88	4.9	6.7	9.28	3.25	3.51	5.36	7.34	0.26	2.11	4.10
7:45:00	2.95	3.87	6.96	9.15	3.15	3.68	5.82	7.95	0.53	2.67	4.80
8:00:00	3.92	3.84	7.86	9.4	3.22	3.84	6.41	8.51	0.62	3.19	5.29
8:15:00	2.93	4.33	7.81	8.61	3.15	4.04	6.97	8.79	0.90	3.82	5.64
8:30:00	3.5	3.23	7.01	10.43	3.24	4.03	7.27	9.37	0.80	4.03	6.14
8:45:00	3.26	2.92	7.37	11.29	3.31	3.64	7.40	9.78	0.33	4.09	6.46
9:00:00	3.72	3.74	8.22	12.25	3.47	3.61	7.65	10.40	0.15	4.19	6.93
9:15:00	3.73	5.24	13.29	17.41	3.43	3.89	8.74	12.00	0.46	5.31	8.57
9:30:00	3.56	7.68	13.24	15.29	3.55	4.56	9.83	13.33	1.01	6.27	9.78
9:45:00	3.47	8.3	13.17	14.59	3.55	5.58	11.06	14.17	2.03	7.51	10.62
10:00:00	3.08	8.23	13.73	16.69	3.51	6.64	12.33	15.25	3.13	8.82	11.73
10:15:00	3.53	10.44	11.6	15.53	3.47	7.98	13.01	15.90	4.50	9.53	12.43
10:30:00	3.52	9.38	14.68	22.75	3.43	8.81	13.28	16.97	5.37	9.85	13.54
10:45:00	3.55	14.55	17.18	18.06	3.43	10.18	14.07	17.52	6.75	10.64	14.09
11:00:00	4.38	12.25	13.89	16.76	3.61	10.97	14.22	17.96	7.36	10.60	14.35
11:15:00	3.98	10.26	11.2	13.41	3.79	11.38	13.71	17.30	7.58	9.92	13.51
11:30:00	3.13	14.17	10.44	14.69	3.71	12.12	13.48	17.13	8.41	9.77	13.42
11:45:00		14.86	16.17	16.27	3.76	13.22	13.78	15.84	9.46	10.02	12.08
12:00:00	4.62	17.43	22.58	28.04	4.03	13.79	14.86	17.83	9.77	10.83	13.81
12:15:00	3.69	22.96	16.84	--	3.86	15.94	15.45	18.10	12.08	11.59	14.25
12:30:00	4.51	19.27	22.71	17.94	3.99	17.74	17.75	19.24	13.75	13.76	15.25
12:45:00	3.68	15.59	14.4	19.12	4.13	18.02	18.54	20.34	13.90	14.42	16.22
13:00:00	3.37	12.71	14.59	50.28	3.97	17.59	18.22	28.85	13.62	14.25	24.87
13:15:00	3.8	23.55	25.11	39.56	3.81	18.82	18.73	31.73	15.01	14.92	27.92
13:30:00	3.59	15.05	16.87	41.33	3.79	17.23	18.74	33.65	13.44	14.95	29.86
13:45:00	3.63	18.89	17.3	24.55	3.61	17.16	17.65	34.97	13.54	14.04	31.35
14:00:00	3.99	13.65	18.24	13.54	3.68	16.77	18.42	33.85	13.09	14.75	30.18
14:15:00	3.31	11.8	17.83	17.38	3.66	16.59	19.07	27.27	12.92	15.41	23.61
14:30:00	3.57	10.7	13.12	28.21	3.62	14.02	16.67	25.00	10.40	13.05	21.38
14:45:00	5.16	27.01	21	29.25	3.93	16.41	17.50	22.59	12.48	13.57	18.65
15:00:00	5	23.97	13.12	35.89	4.21	17.43	16.66	24.85	13.22	12.46	20.65
15:15:00	4.86	13.47	12.76	26.58	4.38	17.39	15.57	27.46	13.01	11.19	23.08
15:30:00	9.29	14.69	13.15	20.37	5.58	17.97	14.63	28.06	12.39	9.05	22.48
15:45:00	7.52	10.36	15.19	14.11	6.37	17.90	15.04	25.24	11.53	8.68	18.87
16:00:00	7.8	8.62	11.97	10.91	6.89	14.22	13.24	21.57	7.33	6.34	14.68
16:15:00	9.76	8.15	12.67	8.77	7.85	11.06	13.15	16.15	3.21	5.30	8.30
16:30:00	10.75	7.53	9.47	6.04	9.02	9.87	12.49	12.04	0.85	3.47	3.02
16:45:00	15.55	7.2	6.35	6.51	10.28	8.37	11.13	9.27	-1.90	0.85	-1.01
17:00:00	11.01	7.45	5.62	5.98	10.97	7.79	9.22	7.64	-3.18	-1.76	-3.33
17:15:00	9.7	8.23	7.25	6.62	11.35	7.71	8.27	6.78	-3.64	-3.08	-4.57
17:30:00	11.59	6.87	5.18	6.38	11.72	7.46	6.77	6.31	-4.26	-4.95	-5.41
17:45:00	11.91	5.43	4.63	5.78	11.95	7.04	5.81	6.25	-4.92	-6.15	-5.70
18:00:00	10.43	4.43	5.38	5.7	10.93	6.48	5.61	6.09	-4.45	-5.32	-4.84