

**GOWANUS CANAL SUPERFUND SITE
RTA1 REMEDIAL CONSTRUCTION
Water Quality Monitoring Weekly Data Summary**

PERIOD: March 22nd to March 26th, 2021

Date of Report: March 31, 2021

Report Contents

- Scope of Monitoring
- Report of Exceedances
- Turbidity Buoy Data
- Summary of Visual Observations

Prepared by

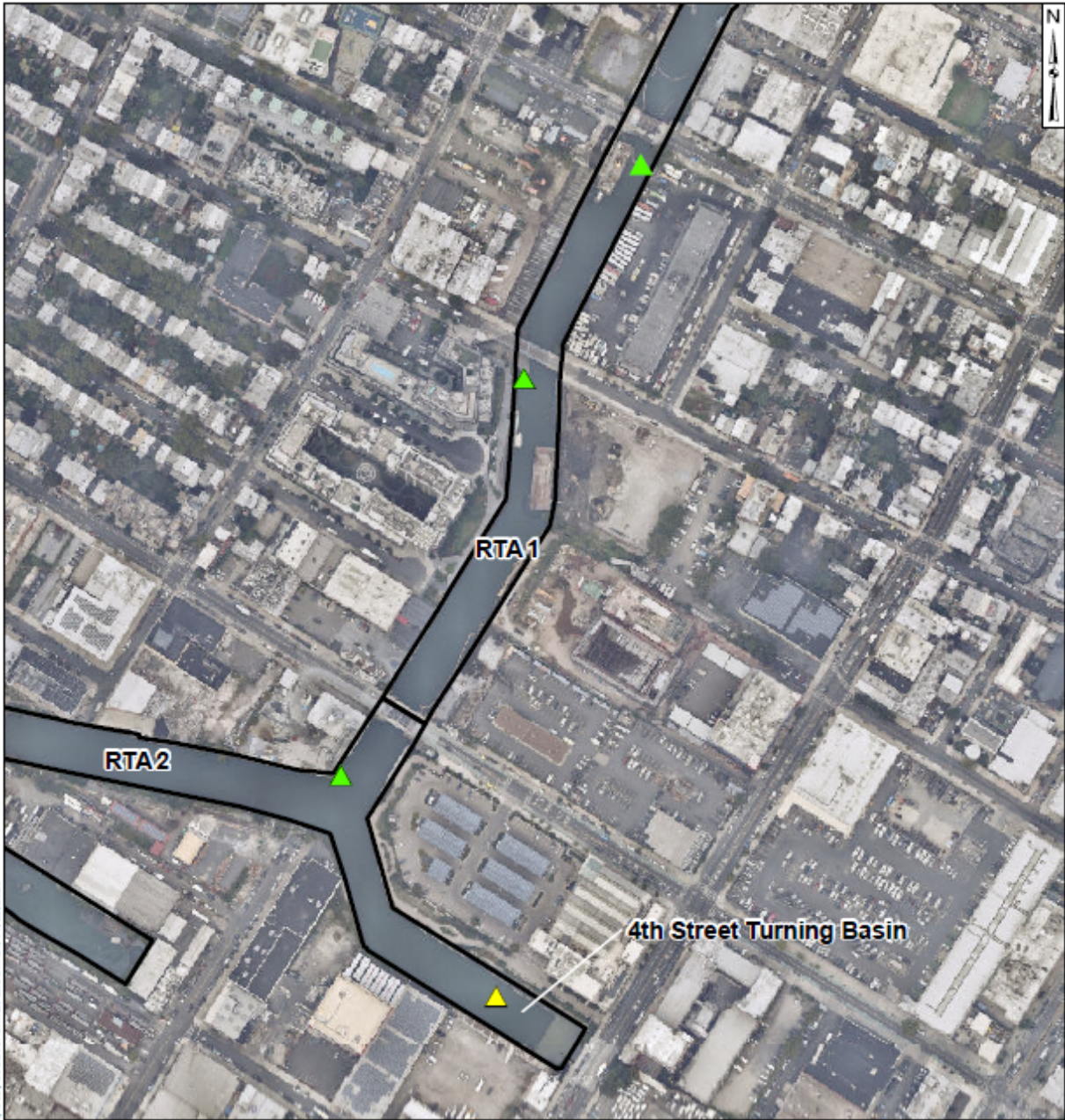
B&B Engineers & Geologists 
of new york, p.c.

an affiliate of Geosyntec Consultants

1255 Roberts Blvd, Suite 200
Kennesaw, GA 30144
Project Number JR0289A

1. SCOPE OF MONITORING

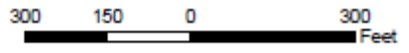
The following report summarizes water quality monitoring data collected during the week of March 22, 2021. In accordance with the Water Quality Monitoring Plan for In-waterway Construction Activities (WQMP) three turbidity buoys were deployed to monitor turbidity at the start of dredging between Carroll Street Bridge and 3rd Street Bridge. One turbidity buoy was deployed just south of the 3rd Street Bridge outside of the air curtain and traditional turbidity curtain. This buoy is referred to as the 3rd Street Sentinel Buoy. A second turbidity buoy was deployed just south of the Carroll Street Bridge and is referred to as the Carroll Street Sentinel Buoy. The third turbidity buoy was deployed in the Fourth Street Turning Basin in order to monitor background turbidity unaffected by in-water construction activities. This turbidity buoy is referred to as the Ambient Buoy. Prior to dredging north of the Union Street Bridge, on January 22, 2021 a fourth turbidity buoy was deployed just south of the Union Street Bridge and is referred to as the Union Street Sentinel Buoy. A map indicating the approximate locations of the turbidity buoys is provided in **Figure 1**. Each turbidity buoy was equipped with a YSI EXO3 water quality meter with optical turbidity sensor. The buoys were field calibrated and programmed such that readings were collected every 15 minutes. After each measurement, the turbidity data were transmitted to a File Transfer Portal (FTP) site via telemetry. This report presents a summary of turbidity data collected from the ambient and sentinel buoys between 7 AM and 6 PM each day during the week of March 22. Daily turbidity data tables are provided in **Appendix A**. No handheld measurements were collected during this reporting period. Visual observations of turbidity and sheen are summarized in Section 4.



\\msrserver\Gowanus-PR-A\03_GIS\mxd\Canal_Wide\Turbidity Buoy Locations.mxd; aka\lmarc; 11/20/2020

Legend

- ▲ Ambient Buoy
- ▲ Sentinel Buoy
- RTA Boundary



Turbidity Buoy Locations

Gowanus Canal, Brooklyn, NY

B&B Engineers & Geologists
of new york, p.c.
an affiliate of Geosyntec Consultants

Kennesaw, GA

February 2021

Figure

1

2. REPORT OF EXCEEDANCES

No exceedances of the numerical action criterion were observed during the reporting period. Exceedances of the numerical trigger criterion were observed at the Carroll Street Sentinel Buoy on March 23 from 9:15 AM to 10:30 AM and from 11:45 AM to 1:00 PM. Further information is provided in Section 2.1. Refer to the WQMP for further information regarding the Trigger and Action Criteria. Threshold criteria are summarized as follows:

- **Trigger criterion** – Any of the following:
 - The rolling average of the relevant sentinel buoy turbidity measurements over a one-hour period exceeds the rolling average of the ambient buoy turbidity measurements by 20 NTU excluding any eliminated outlier measurements and in-waterway construction activities cannot be immediately excluded as the source following consultation with EPA; or
 - Either an oil sheen or a turbidity plume is visually observed at the relevant sentinel buoy and in-waterway construction activities are readily identified as the source.
- **Action criterion** – Any of the following:
 - The rolling average of the turbidity measurements of the sentinel buoy outside of RTA1 over a one-hour period exceeds the rolling average of the ambient buoy turbidity measurements by 40 NTU excluding any eliminated outlier measurements and in-waterway construction activities cannot be immediately excluded as the source following consultation with EPA; or
 - Either an oil sheen or a turbidity plume is visually observed outside of RTA1 and any deployed engineering controls and in-waterway construction activities are readily identified as the source.

An outlier is defined as a reading that is outside the range of 50 to 200 percent of the average of the three previous readings. In addition, to be considered an outlier, the subsequent reading must return to a range of 75 to 133 percent of the average of the three readings preceding the outlier.

2.1 Response to Criteria Exceedances

The trigger level criterion serves to provide early notification to the contractor of construction activities that may lead to an exceedance of the action level criterion. In the event of an exceedance to the trigger criterion, the contractor will not be stopped, and the contractor will be directed to investigate the source of the exceedance and evaluate Best Management Practices (BMPs). In the event of an exceedance to the action level criterion, in-waterway construction activities may be slowed or temporarily suspended as necessary while the contractor investigates the source of the exceedance and appropriate mitigation and corrective measures are determined. A more detailed description of responses to exceedances of the trigger and action level criteria is provided in Section 4.2 of the WQMP.

On March 23, exceedances to the numerical trigger criterion at the Carroll Street Sentinel Buoy were a result of sediment resuspension from frequent project-related vessel traffic to support diver operations at the head of the Canal.

3. TURBIDITY BUOY DATA

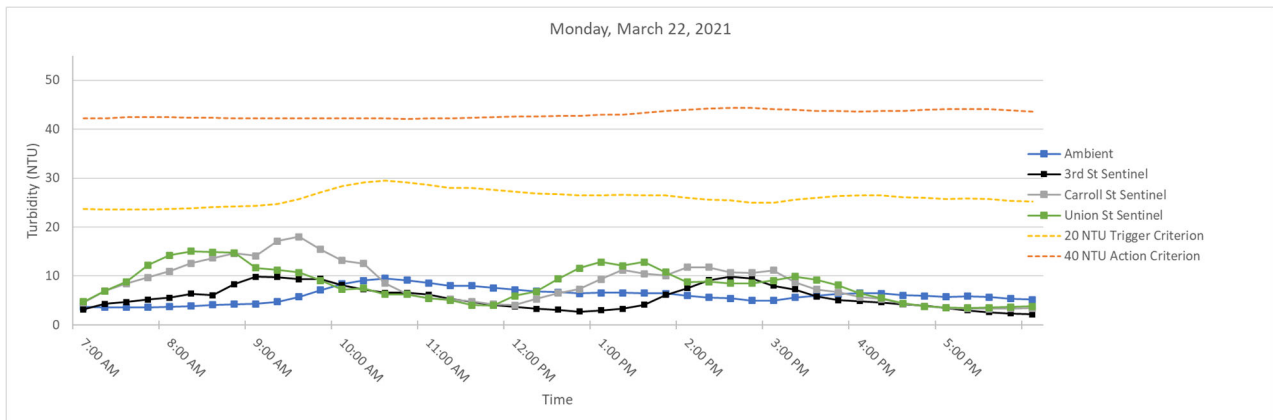
The following section provides turbidity data for the sentinel and ambient turbidity buoys from 7 AM to 6 PM from March 22 to March 26, 2021. Exceedance of the numerical trigger criterion were observed on March 23 at the Carroll Street Sentinel Buoy. Section 2.1 contains further information on these exceedances. **Table 1** below provides a summary of the turbidity data for the reporting period.

Table 1. Daily average and maximum differences between the rolling average turbidity readings from RTA1 sentinel buoys and the ambient buoy between 7 AM and 6 PM

Date	Average Rolling Average Difference (NTU)			Maximum Rolling Average Difference (NTU)		
	3rd St - Ambient	Carroll St - Ambient	Union St - Ambient	3rd St - Ambient	Carroll St - Ambient	Union St - Ambient
Monday March 22, 2021	-0.40	2.53	2.22	5.55	12.40	11.21
Tuesday March 23, 2021	0.92	12.17	3.56	3.37	33.77	5.51
Wednesday March 24, 2021	4.66	0.14	0.65	15.57	9.36	19.69
Thursday March 25, 2021	6.39	-1.93	-1.95	11.81	0.79	0.96
Friday March 26, 2021	3.88	1.89	1.61	10.69	12.03	6.48

3.1 Monday, March 22, 2021

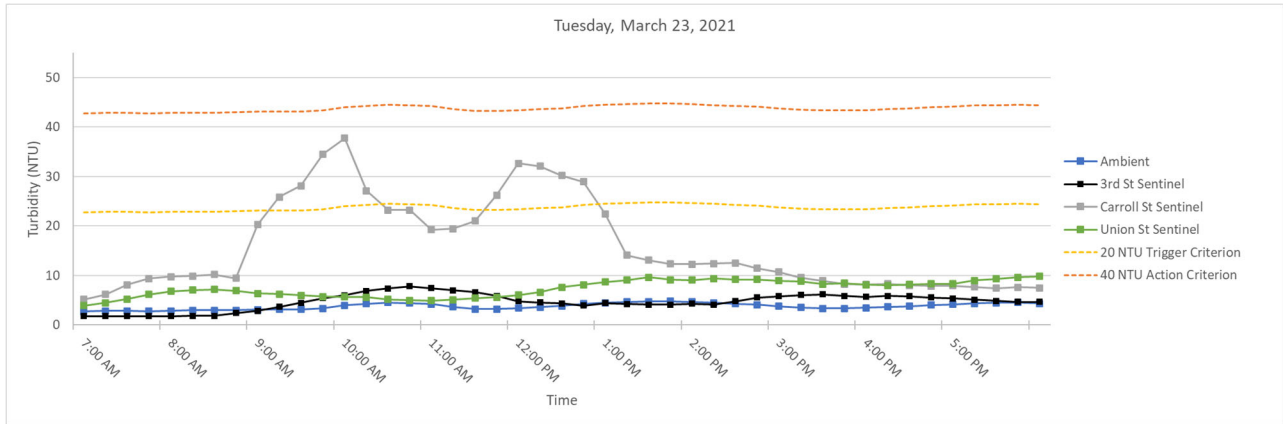
Figure 2. Hourly rolling average turbidity readings on Monday, March 22, 2021 from 7 AM to 6 PM.



Note: On March 22, 2021 one spike in turbidity at the 3rd Street Sentinel Buoy, two spikes at the Carroll Street Sentinel Buoy, and one spike at the Union Street Sentinel Buoy were eliminated as an outliers in accordance with the outlier analysis defined in Section 2 and the WQMP.

3.2 Tuesday, March 23, 2021

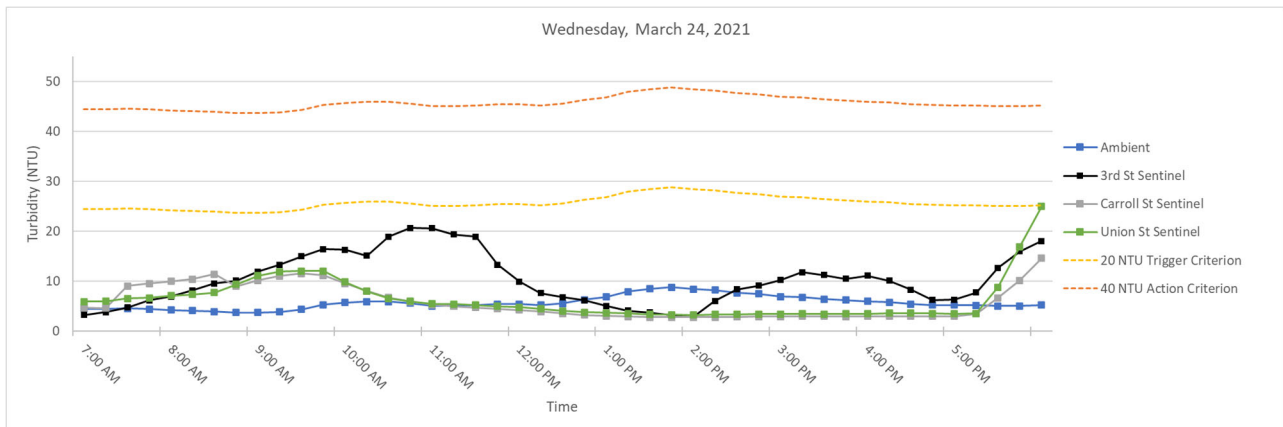
Figure 3. Hourly rolling average turbidity readings on Tuesday, March 23, 2021 from 7 AM to 6 PM.



Note: On March 23, 2021 one spike in turbidity at the 3rd Street Sentinel Buoy was eliminated as an outlier in accordance with the outlier analysis defined in Section 2 and the WQMP.

3.3 Wednesday, March 24, 2021

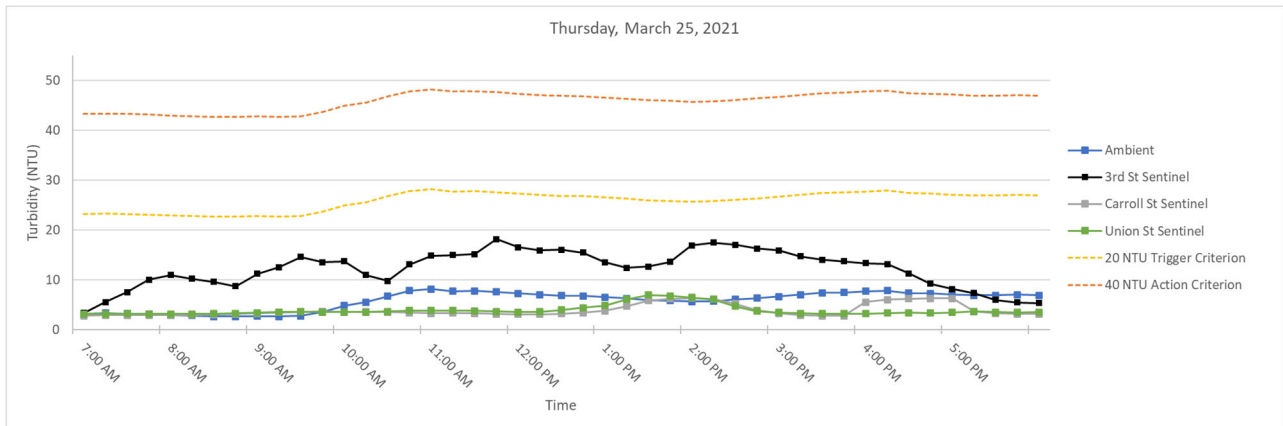
Figure 4. Hourly rolling average turbidity readings on Wednesday, March 24, 2021 from 7 AM to 6 PM.



Note: On March 24, 2021 three spikes in turbidity at the 3rd Street Sentinel Buoy were eliminated as outliers in accordance with the outlier analysis defined in Section 2 and the WQMP.

3.4 Thursday, March 25, 2021

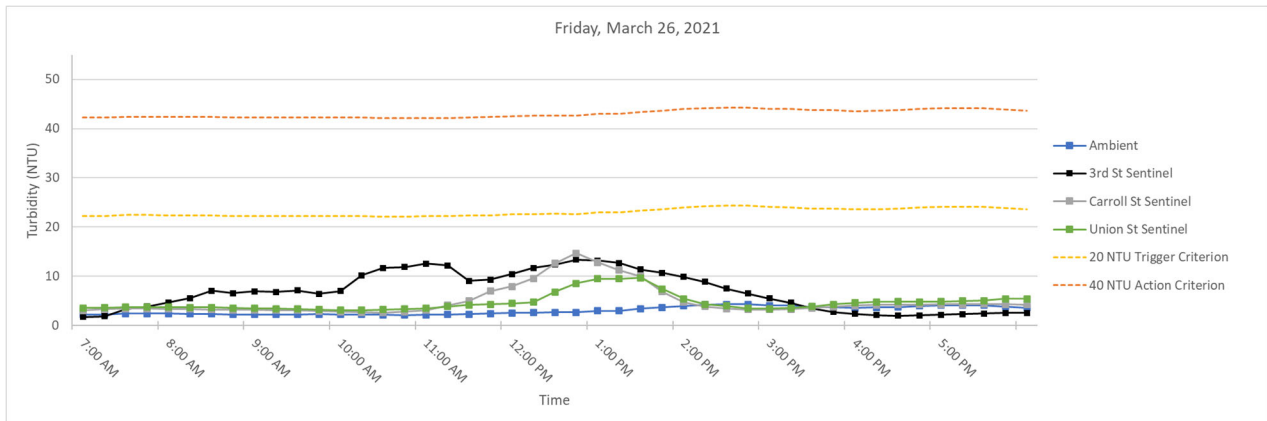
Figure 5. Hourly rolling average turbidity readings on Thursday, March 25, 2021 from 7 AM to 6 PM.



Note: On March 25, 2021 two spikes in turbidity at the 3rd Street Sentinel Buoy and two spikes at the Carroll Street Sentinel Buoy were eliminated as outliers in accordance with the outlier analysis defined in Section 2 and the WQMP.

3.5 Friday, March 26, 2021

Figure 6. Hourly rolling average turbidity readings on Friday, March 26, 2021 from 7 AM to 6 PM.



Note: On March 26, 2021 two spikes in turbidity at the Carroll Street Sentinel Buoy were eliminated as outliers in accordance with the outlier analysis defined in Section 2 and the WQMP.

SUMMARY OF VISUAL OBSERVATIONS

Some sheen was observed during dredging between 3rd Street and Carroll Street and debris probing work at the head of the Canal in front of the Flushing Tunnel. Absorbent booms were deployed to contain this sheen. On Wednesday, March 24 sheen was observed outside of the absorbent booms in proximity to the Union Street Bridge. Potential sources of this sheen include CSO and/or storm sewer discharges.

APPENDIX A
Turbidity Data Tables

Monday, March 22, 2021

Time	Turbidity (NTU)				Rolling Average Turbidity (NTU)				Difference (NTU)		
	Ambient	3rd Street	Carroll Street	Union Street	Ambient	3rd Street	Carroll Street	Union Street	3rd St - Ambient	Carroll St - Ambient	Union St - Ambient
7:00:00	3.67	4.05	4.38	4.23	3.69	3.20	4.58	4.74	-0.49	0.90	1.05
7:15:00	3.38	8.2	16.33	16.34	3.63	4.29	6.92	6.96	0.66	3.29	3.33
7:30:00	3.79	4.85	12.5	14.49	3.60	4.71	8.48	8.86	1.11	4.88	5.26
7:45:00	3.72	5.08	10.92	21.62	3.63	5.18	9.73	12.23	1.55	6.10	8.60
8:00:00	4.13	--	10.81	14.61	3.74	5.55	10.99	14.26	1.81	7.25	10.52
8:15:00	4.38	7.34	12.38	8.4	3.88	6.37	12.59	15.09	2.49	8.71	11.21
8:30:00	4.6	7.09	21.77	15.26	4.12	6.09	13.68	14.88	1.97	9.55	10.75
8:45:00	4.29	13.86	17.27	13.84	4.22	8.34	14.63	14.75	4.12	10.41	10.52
9:00:00	4.08	11.11	8.21	6.15	4.30	9.85	14.09	11.65	5.55	9.79	7.36
9:15:00	6.25	9.37	25.95	12.47	4.72	9.75	17.12	11.22	5.03	12.40	6.50
9:30:00	9.59	5.34	16.84	5.88	5.76	9.35	18.01	10.72	3.59	12.25	4.96
9:45:00	11.37	7.26	8.98	7.2	7.12	9.39	15.45	9.11	2.27	8.33	1.99
10:00:00	10.55	7.74	5.78	4.58	8.37	8.16	13.15	7.26	-0.20	4.78	-1.11
10:15:00	7.79	6.61	5.27	7.34	9.11	7.26	12.56	7.49	-1.85	3.45	-1.62
10:30:00	8.32	6.03	5.85	--	9.52	6.60	8.54	6.25	-2.93	-0.98	-3.27
10:45:00	7.79	5.36	5.83	5.9	9.16	6.60	6.34	6.26	-2.56	-2.82	-2.91
11:00:00	8.56	5.15	4.71	3.82	8.60	6.18	5.49	5.41	-2.42	-3.11	-3.19
11:15:00	7.76	3.36	4.55	3.21	8.04	5.30	5.24	5.07	-2.74	-2.80	-2.98
11:30:00	7.5	3.89	3.09	3.16	7.99	4.76	4.81	4.02	-3.23	-3.18	-3.96
11:45:00	6.32	2.97	2.9	3.85	7.59	4.15	4.22	3.99	-3.44	-3.37	-3.60
12:00:00	5.88	3.37	5.03	15.54	7.20	3.75	4.06	5.92	-3.46	-3.15	-1.29
12:15:00	7.09	3.05	11.12	8.39	6.91	3.33	5.34	6.83	-3.58	-1.57	-0.08
12:30:00	6.73	2.19	10.31	16.01	6.70	3.09	6.49	9.39	-3.61	-0.21	2.69
12:45:00	6.25	2.14	--	14.35	6.45	2.74	7.34	11.63	-3.71	0.89	5.17
13:00:00	6.76	4.25	10.95	10	6.54	3.00	9.35	12.86	-3.54	2.81	6.32
13:15:00	6.01	4.72	12.4	11.8	6.57	3.27	11.20	12.11	-3.30	4.63	5.54
13:30:00	6.64	7.27	8.33	12.07	6.48	4.11	10.50	12.85	-2.36	4.02	6.37
13:45:00	6.47	12.41	8.66	5.64	6.43	6.16	10.09	10.77	-0.27	3.66	4.35
14:00:00	4.08	9.02	18.51	4.41	5.99	7.53	11.77	8.78	1.54	5.78	2.79
14:15:00	4.81	12.18	11.07	10.21	5.60	9.12	11.79	8.83	3.52	6.19	3.22
14:30:00	5.09	8.4	7.1	10.26	5.42	9.86	10.73	8.52	4.44	5.32	3.10
14:45:00	4.44	5.71	8.03	12.22	4.98	9.54	10.67	8.55	4.57	5.70	3.57
15:00:00	6.55	4.92	--	8.47	4.99	8.05	11.18	9.11	3.05	6.18	4.12
15:15:00	7.38	5.25	8.54	8.39	5.65	7.29	8.69	9.91	1.64	3.03	4.26
15:30:00	6.55	4.71	5.41	6.69	6.00	5.80	7.27	9.21	-0.20	1.27	3.20
15:45:00	6.55	4.76	4.75	4.83	6.29	5.07	6.68	8.12	-1.22	0.39	1.83
16:00:00	5.65	4.64	4.03	3.83	6.54	4.86	5.68	6.44	-1.68	-0.85	-0.09
16:15:00	6.04	3.76	3.88	3.71	6.43	4.62	5.32	5.49	-1.81	-1.11	-0.94
16:30:00	5.63	3.4	3.36	3.21	6.08	4.25	4.29	4.45	-1.83	-1.80	-1.63
16:45:00	5.78	3	3.03	3.4	5.93	3.91	3.81	3.80	-2.02	-2.12	-2.13
17:00:00	5.67	2.6	3.17	3.75	5.75	3.48	3.49	3.58	-2.27	-2.26	-2.17
17:15:00	6.22	2.08	3.36	3.51	5.87	2.97	3.36	3.52	-2.90	-2.51	-2.35
17:30:00	5.08	2.07	3.55	3.77	5.68	2.63	3.29	3.53	-3.05	-2.38	-2.15
17:45:00	4.27	2.03	3.61	3.83	5.40	2.36	3.34	3.65	-3.05	-2.06	-1.75
18:00:00	4.68	1.98	3.44	4.17	5.18	2.15	3.43	3.81	-3.03	-1.76	-1.38

Tuesday, March 23, 2021

Time	Turbidity (NTU)				Rolling Average Turbidity (NTU)				Difference (NTU)		
	Ambient	3rd Street	Carroll Street	Union Street	Ambient	3rd Street	Carroll Street	Union Street	3rd St - Ambient	Carroll St - Ambient	Union St - Ambient
7:00:00	2.93	1.56	7.96	4.82	2.75	1.75	5.16	3.90	-0.99	2.41	1.15
7:15:00	3.03	1.79	8.19	6.19	2.83	1.77	6.18	4.47	-1.06	3.35	1.64
7:30:00	2.85	1.83	12.8	7.07	2.84	1.77	8.12	5.25	-1.07	5.28	2.41
7:45:00	2.67	1.92	10.77	8.18	2.81	1.79	9.42	6.17	-1.02	6.61	3.37
8:00:00	2.74	1.87	9.13	7.7	2.84	1.79	9.77	6.79	-1.05	6.93	3.95
8:15:00	3.41	--	8.6	6.15	2.94	1.85	9.90	7.06	-1.09	6.96	4.12
8:30:00	3.05	1.68	9.77	6.67	2.94	1.83	10.21	7.15	-1.12	7.27	4.21
8:45:00	3	4.25	8.82	5.85	2.97	2.43	9.42	6.91	-0.54	6.44	3.94
9:00:00	3.25	3.49	65.01	5.33	3.09	2.82	20.27	6.34	-0.27	17.18	3.25
9:15:00	2.97	5.15	37.25	7.05	3.14	3.64	25.89	6.21	0.51	22.75	3.07
9:30:00	3.62	7.67	19.97	5.05	3.18	4.45	28.16	5.99	1.27	24.99	2.81
9:45:00	4.02	6.59	41.63	5.3	3.37	5.43	34.54	5.72	2.06	31.16	2.34
10:00:00	5.96	6.95	24.83	5.75	3.96	5.97	37.74	5.70	2.01	33.77	1.73
10:15:00	4.92	7.85	12.05	4.76	4.30	6.84	27.15	5.58	2.54	22.85	1.28
10:30:00	4.17	7.84	17.64	5.06	4.54	7.38	23.22	5.18	2.84	18.69	0.65
10:45:00	3.1	9.79	20.05	4.15	4.43	7.80	23.24	5.00	3.37	18.81	0.57
11:00:00	3.03	4.79	21.62	4.72	4.24	7.44	19.24	4.89	3.21	15.00	0.65
11:15:00	3.08	4.74	25.8	6.96	3.66	7.00	19.43	5.13	3.34	15.77	1.47
11:30:00	2.75	5.83	20.12	6.26	3.23	6.60	21.05	5.43	3.37	17.82	2.20
11:45:00	4.27	4.27	43.6	5.87	3.25	5.88	26.24	5.59	2.64	22.99	2.35
12:00:00	3.91	4.43	52.22	6.57	3.41	4.81	32.67	6.08	1.40	29.26	2.67
12:15:00	4.01	3.3	18.91	7.3	3.60	4.51	32.13	6.59	0.91	28.53	2.99
12:30:00	4.18	3.8	16.36	12.03	3.82	4.33	30.24	7.61	0.50	26.42	3.78
12:45:00	4.95	3.8	13.74	8.95	4.26	3.92	28.97	8.14	-0.34	24.70	3.88
13:00:00	5.35	6.64	10.99	8.48	4.48	4.39	22.44	8.67	-0.09	17.96	4.19
13:15:00	4.88	3.51	10.64	8.73	4.67	4.21	14.13	9.10	-0.46	9.45	4.42
13:30:00	4.32	2.81	13.79	10.07	4.74	4.11	13.10	9.65	-0.62	8.37	4.92
13:45:00	4.52	3.75	12.43	9.58	4.80	4.10	12.32	9.16	-0.70	7.51	4.36
14:00:00	4.26	4.59	13.43	8.54	4.67	4.26	12.26	9.08	-0.41	7.59	4.41
14:15:00	4.33	5.71	11.84	10.16	4.46	4.07	12.43	9.42	-0.39	7.96	4.95
14:30:00	4.17	7.14	11.23	7.57	4.32	4.80	12.54	9.18	0.48	8.22	4.86
14:45:00	3.24	6.68	8.48	10.21	4.10	5.57	11.48	9.21	1.47	7.38	5.11
15:00:00	2.98	4.8	8.54	8.32	3.80	5.78	10.70	8.96	1.99	6.91	5.16
15:15:00	2.88	5.96	7.67	7.77	3.52	6.06	9.55	8.81	2.54	6.03	5.29
15:30:00	3.51	6.28	8.89	7.5	3.36	6.17	8.96	8.27	2.82	5.61	4.92
15:45:00	4.16	5.48	7.83	8.36	3.35	5.84	8.28	8.43	2.49	4.93	5.08
16:00:00	3.68	5.86	8.15	8.63	3.44	5.68	8.22	8.12	2.23	4.77	4.67
16:15:00	3.99	5.8	9.17	7.68	3.64	5.88	8.34	7.99	2.23	4.70	4.34
16:30:00	3.68	5.63	6.06	8.82	3.80	5.81	8.02	8.20	2.01	4.22	4.39
16:45:00	4.78	4.87	8.16	8.09	4.06	5.53	7.87	8.32	1.47	3.82	4.26
17:00:00	4.7	4.56	8.15	8.23	4.17	5.34	7.94	8.29	1.18	3.77	4.12
17:15:00	4.64	4.77	6.76	12.21	4.36	5.13	7.66	9.01	0.77	3.30	4.65
17:30:00	4.45	4.43	7.96	9.39	4.45	4.85	7.42	9.35	0.40	2.97	4.90
17:45:00	4.07	4.65	7.21	10.21	4.53	4.66	7.65	9.63	0.13	3.12	5.10
18:00:00	3.86	4.98	7.3	9.21	4.34	4.68	7.48	9.85	0.33	3.13	5.51

Wednesday, March 24, 2021

Time	Turbidity (NTU)				Rolling Average Turbidity (NTU)				Difference (NTU)		
	Ambient	3rd Street	Carroll Street	Union Street	Ambient	3rd Street	Carroll Street	Union Street	3rd St - Ambient	Carroll St - Ambient	Union St - Ambient
7:00:00	4.29	4.5	4.58	5.97	4.51	3.25	4.69	5.95	-1.25	0.18	1.44
7:15:00	4.86	5.38	4.5	6.28	4.50	3.82	4.64	5.99	-0.68	0.14	1.49
7:30:00	4.62	7.98	26.65	8.99	4.53	4.77	9.06	6.56	0.23	4.53	2.02
7:45:00	3.95	9.79	7.18	6.3	4.45	6.18	9.54	6.66	1.73	5.09	2.21
8:00:00	3.47	--	7.11	8.13	4.24	6.91	10.00	7.13	2.67	5.77	2.90
8:15:00	3.72	9.47	6.85	7.02	4.12	8.16	10.46	7.34	4.03	6.33	3.22
8:30:00	3.82	11.12	9.25	8.18	3.92	9.59	11.41	7.72	5.67	7.49	3.81
8:45:00	3.88	--	14.55	17.13	3.77	10.13	8.99	9.35	6.36	5.22	5.58
9:00:00	3.78	15.19	13.1	15.01	3.73	11.93	10.17	11.09	8.19	6.44	7.36
9:15:00	4.07	17.41	11.6	12.47	3.85	13.30	11.07	11.96	9.44	7.22	8.11
9:30:00	6.42	16.26	9.29	7.61	4.39	15.00	11.56	12.08	10.60	7.16	7.69
9:45:00	8.42	16.83	7.44	7.95	5.31	16.42	11.20	12.03	11.11	5.88	6.72
10:00:00	6.13	15.7	6.37	6.45	5.76	16.28	9.56	9.90	10.51	3.80	4.13
10:15:00	4.59	9.37	5.74	5.63	5.93	15.11	8.09	8.02	9.19	2.16	2.10
10:30:00	4.17	36.43	5.03	5.26	5.95	18.92	6.77	6.58	12.97	0.83	0.63
10:45:00	4.68	24.95	4.96	4.57	5.60	20.66	5.91	5.97	15.06	0.31	0.37
11:00:00	5.73	16.68	4.59	5.46	5.06	20.63	5.34	5.47	15.57	0.28	0.41
11:15:00	6.06	9.37	4.77	6.1	5.05	19.36	5.02	5.40	14.31	-0.03	0.36
11:30:00	5.18	7.11	4.32	4.9	5.16	18.91	4.73	5.26	13.74	-0.43	0.09
11:45:00	5.61	8.58	3.96	3.95	5.45	13.34	4.52	5.00	7.89	-0.93	-0.46
12:00:00	4.53	7.81	3.47	3.71	5.42	9.91	4.22	4.82	4.49	-1.20	-0.60
12:15:00	4.86	5.35	3.17	3.97	5.25	7.64	3.94	4.53	2.40	-1.31	-0.72
12:30:00	7.65	5.22	2.92	3.8	5.57	6.81	3.57	4.07	1.25	-2.00	-1.50
12:45:00	8.89	4.08	2.84	3.57	6.31	6.21	3.27	3.80	-0.10	-3.04	-2.51
13:00:00	8.53	2.95	2.89	3.22	6.89	5.08	3.06	3.65	-1.81	-3.83	-3.24
13:15:00	9.65	2.92	2.81	3.14	7.92	4.10	2.93	3.54	-3.81	-4.99	-4.38
13:30:00	7.67	3.61	2.67	3.28	8.48	3.76	2.83	3.40	-4.72	-5.65	-5.08
13:45:00	9.26	2.54	2.9	3.39	8.80	3.22	2.82	3.32	-5.58	-5.98	-5.48
14:00:00	7.1	2.29	2.85	3.27	8.44	2.86	2.82	3.26	-5.58	-5.62	-5.18
14:15:00	7.69	18.99	2.9	3.64	8.27	6.07	2.83	3.34	-2.20	-5.45	-4.93
14:30:00	6.55	14.34	3.04	3.42	7.65	8.35	2.87	3.40	0.70	-4.78	-4.25
14:45:00	6.83	7.37	2.87	3.38	7.49	9.11	2.91	3.42	1.62	-4.57	-4.07
15:00:00	6.56	8.38	2.98	3.4	6.95	10.27	2.93	3.42	3.33	-4.02	-3.52
15:15:00	6.5	9.95	3.08	3.57	6.83	11.81	2.97	3.48	4.98	-3.85	-3.34
15:30:00	5.71	16.3	2.86	3.53	6.43	11.27	2.97	3.46	4.84	-3.46	-2.97
15:45:00	5.53	--	2.98	3.64	6.23	10.50	2.95	3.50	4.27	-3.27	-2.72
16:00:00	5.53	9.98	3.09	3.4	5.97	11.15	3.00	3.51	5.19	-2.97	-2.46
16:15:00	5.75	4.36	3	3.93	5.80	10.15	3.00	3.61	4.34	-2.80	-2.19
16:30:00	4.67	2.55	3.01	3.5	5.44	8.30	2.99	3.60	2.86	-2.45	-1.84
16:45:00	4.91	7.98	2.79	3.32	5.28	6.22	2.97	3.56	0.94	-2.30	-1.72
17:00:00	5.25	6.73	2.98	3.4	5.22	6.32	2.97	3.51	1.10	-2.25	-1.71
17:15:00	5.24	17	5.71	3.52	5.16	7.72	3.50	3.53	2.56	-1.67	-1.63
17:30:00	5.23	29.13	18.98	30.24	5.06	12.68	6.69	8.80	7.62	1.63	3.74
17:45:00	4.77	19.14	20.55	44.3	5.08	16.00	10.20	16.96	10.92	5.12	11.88
18:00:00	5.89	18.23	24.94	43.39	5.28	18.05	14.63	24.97	12.77	9.36	19.69

Thursday, March 25, 2021

Time	Turbidity (NTU)				Rolling Average Turbidity (NTU)				Difference (NTU)		
	Ambient	3rd Street	Carroll Street	Union Street	Ambient	3rd Street	Carroll Street	Union Street	3rd St - Ambient	Carroll St - Ambient	Union St - Ambient
7:00:00	3.02	6.83	2.91	3.51	3.25	3.38	2.80	3.16	0.13	-0.45	-0.09
7:15:00	3.17	12.71	3.33	3.27	3.35	5.52	2.93	3.18	2.17	-0.42	-0.17
7:30:00	2.76	11.89	2.9	3.09	3.24	7.55	2.96	3.21	4.31	-0.29	-0.03
7:45:00	2.95	14.82	2.67	3.01	3.11	10.05	2.95	3.19	6.94	-0.16	0.08
8:00:00	2.85	8.68	2.8	3.11	2.95	10.99	2.92	3.20	8.04	-0.03	0.25
8:15:00	2.49	3.07	3.13	3.28	2.84	10.23	2.97	3.15	7.39	0.12	0.31
8:30:00	2.43	--	3.72	3.57	2.70	9.62	3.04	3.21	6.92	0.35	0.52
8:45:00	2.55	8.4	3.57	3.61	2.65	8.74	3.18	3.32	6.09	0.52	0.66
9:00:00	3.52	24.66	3.31	3.66	2.77	11.20	3.31	3.45	8.43	0.54	0.68
9:15:00	2.5	14.15	3.58	3.53	2.70	12.57	3.46	3.53	9.87	0.76	0.83
9:30:00	3.12	11.32	3.9	3.57	2.82	14.63	3.62	3.59	11.81	0.79	0.76
9:45:00	6.49	9.25	3.96	3.36	3.64	13.56	3.66	3.55	9.92	0.03	-0.09
10:00:00	8.78	9.27	3.16	3.7	4.88	13.73	3.58	3.56	8.85	-1.30	-1.32
10:15:00	6.99	10.99	3.49	3.63	5.58	11.00	3.62	3.56	5.42	-1.96	-2.02
10:30:00	8.39	8.25	3.34	4.22	6.75	9.82	3.57	3.70	3.06	-3.18	-3.06
10:45:00	8.57	27.81	3.27	4.27	7.84	13.11	3.44	3.84	5.27	-4.40	-4.01
11:00:00	7.99	17.89	--	3.65	8.14	14.84	3.32	3.89	6.70	-4.83	-4.25
11:15:00	6.72	9.85	3.46	3.45	7.73	14.96	3.39	3.84	7.23	-4.34	-3.89
11:30:00	7.47	12.02	3.07	3.5	7.83	15.16	3.29	3.82	7.34	-4.54	-4.01
11:45:00	7.28	23.34	2.91	3.47	7.61	18.18	3.18	3.67	10.58	-4.43	-3.94
12:00:00	7.15	19.48	2.93	3.76	7.32	16.52	3.09	3.57	9.19	-4.23	-3.76
12:15:00	6.48	14.73	3.27	3.81	7.02	15.88	3.13	3.60	8.86	-3.89	-3.42
12:30:00	5.93	10.61	4.07	5.45	6.86	16.04	3.25	4.00	9.17	-3.61	-2.86
12:45:00	7.1	9.34	3.97	5.67	6.79	15.50	3.43	4.43	8.71	-3.36	-2.36
13:00:00	6.22	--	4.64	5.54	6.58	13.54	3.78	4.85	6.96	-2.80	-1.73
13:15:00	5.68	15.05	7.6	10.12	6.28	12.43	4.71	6.12	6.15	-1.57	-0.16
13:30:00	5.05	15.77	9.16	8.02	6.00	12.69	5.89	6.96	6.70	-0.11	0.96
13:45:00	5.25	14.34	5.93	4.61	5.86	13.63	6.26	6.79	7.77	0.40	0.93
14:00:00	6.33	22.47	4.54	4.02	5.71	16.91	6.37	6.46	11.20	0.67	0.76
14:15:00	6.53	19.75	3.5	3.66	5.77	17.48	6.15	6.09	11.71	0.38	0.32
14:30:00	7.31	12.85	3.05	3.34	6.09	17.04	5.24	4.73	10.94	-0.86	-1.36
14:45:00	6.39	11.97	2.7	3.13	6.36	16.28	3.94	3.75	9.91	-2.42	-2.61
15:00:00	6.82	12.4	2.83	3.19	6.68	15.89	3.32	3.47	9.21	-3.35	-3.21
15:15:00	8.24	16.65	2.56	3.31	7.06	14.72	2.93	3.33	7.67	-4.13	-3.73
15:30:00	8.3	16.41	3	3.15	7.41	14.06	2.83	3.22	6.64	-4.58	-4.19
15:45:00	7.78	11.31	2.95	3.28	7.51	13.75	2.81	3.21	6.24	-4.70	-4.29
16:00:00	7.49	10.11	16.42	3.29	7.73	13.38	5.55	3.24	5.65	-2.17	-4.48
16:15:00	7.58	11.43	5.19	3.76	7.88	13.18	6.02	3.36	5.30	-1.85	-4.52
16:30:00	5.79	7.35	3.59	3.57	7.39	11.32	6.23	3.41	3.93	-1.16	-3.98
16:45:00	8	5.92	3.2	3.07	7.33	9.22	6.27	3.39	1.90	-1.06	-3.93
17:00:00	6.7	6.11	3.02	3.76	7.11	8.18	6.28	3.49	1.07	-0.83	-3.62
17:15:00	6.64	5.94	3.54	4.07	6.94	7.35	3.71	3.65	0.41	-3.23	-3.30
17:30:00	7.46	4.66	3.06	3.37	6.92	6.00	3.28	3.57	-0.92	-3.64	-3.35
17:45:00	6.32	4.95	3.16	3.09	7.02	5.52	3.20	3.47	-1.51	-3.83	-3.55
18:00:00	7.6	5	3.22	3.33	6.94	5.33	3.20	3.52	-1.61	-3.74	-3.42

Friday, March 26, 2021

Time	Turbidity (NTU)				Rolling Average Turbidity (NTU)				Difference (NTU)		
	Ambient	3rd Street	Carroll Street	Union Street	Ambient	3rd Street	Carroll Street	Union Street	3rd St - Ambient	Carroll St - Ambient	Union St - Ambient
7:00:00	2.5	1.9	3.27	3.62	2.23	1.70	3.03	3.53	-0.53	0.80	1.31
7:15:00	2.21	2.01	3.83	3.87	2.22	1.85	3.28	3.62	-0.37	1.06	1.39
7:30:00	2.99	8.92	3.5	3.93	2.41	3.31	3.40	3.70	0.90	0.99	1.29
7:45:00	2.21	4.54	3.1	3.56	2.42	3.83	3.40	3.70	1.41	0.98	1.28
8:00:00	2.15	6.08	3.07	3.52	2.41	4.69	3.35	3.70	2.28	0.94	1.29
8:15:00	2.17	6.29	3.12	3.5	2.35	5.57	3.32	3.68	3.22	0.98	1.33
8:30:00	2.13	9.29	3.25	3.65	2.33	7.02	3.21	3.63	4.69	0.88	1.30
8:45:00	2.35	6.62	3.24	3.34	2.20	6.56	3.16	3.51	4.36	0.95	1.31
9:00:00	2.32	6.39	3.1	3.3	2.22	6.93	3.16	3.46	4.71	0.93	1.24
9:15:00	2.27	5.42	2.93	3.31	2.25	6.80	3.13	3.42	4.55	0.88	1.17
9:30:00	2.18	7.92	2.82	3.08	2.25	7.13	3.07	3.34	4.88	0.82	1.09
9:45:00	2.2	5.62	2.55	2.97	2.26	6.39	2.93	3.20	4.13	0.66	0.94
10:00:00	2.23	9.69	2.45	2.99	2.24	7.01	2.77	3.13	4.77	0.53	0.89
10:15:00	2.14	22.3	2.65	3.23	2.20	10.19	2.68	3.12	7.99	0.48	0.91
10:30:00	1.97	12.78	--	3.77	2.14	11.66	2.62	3.21	9.52	0.47	1.06
10:45:00	2	8.93	3.37	3.68	2.11	11.86	2.76	3.33	9.76	0.65	1.22
11:00:00	2.53	9.16	3.9	3.61	2.17	12.57	3.09	3.46	10.40	0.92	1.28
11:15:00	2.33	7.64	6.41	4.9	2.19	12.16	4.08	3.84	9.97	1.89	1.64
11:30:00	2.63	6.85	6.18	4.78	2.29	9.07	4.97	4.15	6.78	2.67	1.86
11:45:00	2.5	13.83	15.09	4.42	2.40	9.28	6.99	4.28	6.88	4.59	1.88
12:00:00	2.78	14.73	--	4.58	2.55	10.44	7.90	4.46	7.89	5.34	1.90
12:15:00	2.73	15.4	10.43	4.85	2.59	11.69	9.53	4.71	9.10	6.93	2.11
12:30:00	2.75	11.15	18.82	15.19	2.68	12.39	12.63	6.76	9.71	9.95	4.09
12:45:00	2.54	11.64	14.41	13.57	2.66	13.35	14.69	8.52	10.69	12.03	5.86
13:00:00	4.13	12.86	7.48	9.12	2.99	13.16	12.79	9.46	10.17	9.80	6.48
13:15:00	2.85	12.2	4.94	4.63	3.00	12.65	11.22	9.47	9.65	8.22	6.47
13:30:00	4.69	8.91	4.16	5.77	3.39	11.35	9.96	9.66	7.96	6.57	6.26
13:45:00	4.06	7.84	3.23	3.92	3.65	10.69	6.84	7.40	7.04	3.19	3.75
14:00:00	4.17	7.35	3.67	3.65	3.98	9.83	4.70	5.42	5.85	0.72	1.44
14:15:00	5.21	8.06	3.21	3.45	4.20	8.87	3.84	4.28	4.68	-0.35	0.09
14:30:00	3.38	5.28	2.77	2.99	4.30	7.49	3.41	3.96	3.19	-0.89	-0.35
14:45:00	4.68	3.89	3.09	3.26	4.30	6.48	3.19	3.45	2.18	-1.11	-0.85
15:00:00	2.88	2.96	3.52	3.7	4.06	5.51	3.25	3.41	1.44	-0.81	-0.65
15:15:00	3.98	2.82	3.78	4.44	4.03	4.60	3.27	3.57	0.58	-0.75	-0.46
15:30:00	3.69	1.96	4.37	5	3.72	3.38	3.51	3.88	-0.34	-0.22	0.16
15:45:00	3.48	1.92	4.24	5.13	3.74	2.71	3.80	4.31	-1.03	0.06	0.56
16:00:00	3.69	2.05	4.26	4.74	3.54	2.34	4.03	4.60	-1.20	0.49	1.06
16:15:00	3.44	1.83	4.19	4.59	3.66	2.12	4.17	4.78	-1.54	0.51	1.12
16:30:00	4.44	2.14	4.18	4.77	3.75	1.98	4.25	4.85	-1.77	0.50	1.10
16:45:00	4.81	2.31	4.36	4.6	3.97	2.05	4.25	4.77	-1.92	0.27	0.79
17:00:00	4.27	2.4	4.36	5.42	4.13	2.15	4.27	4.82	-1.98	0.14	0.69
17:15:00	3.62	2.69	4.43	5.35	4.12	2.27	4.30	4.95	-1.84	0.19	0.83
17:30:00	3.4	2.65	4.45	4.94	4.11	2.44	4.36	5.02	-1.67	0.25	0.91
17:45:00	3.27	2.54	3.94	6.61	3.87	2.52	4.31	5.38	-1.36	0.43	1.51
18:00:00	3.44	2.42	4.03	4.64	3.60	2.54	4.24	5.39	-1.06	0.64	1.79