

**GOWANUS CANAL SUPERFUND SITE  
RTA1 REMEDIAL CONSTRUCTION  
Water Quality Monitoring Weekly Data Summary**

**PERIOD: May 9 – May 13, 2022**

**Date of Report: May 17, 2022**

## **Report Contents**

- Scope of Monitoring
- Report of Exceedances
- Turbidity Buoy Data
- Summary of Visual Observations

*Prepared by*

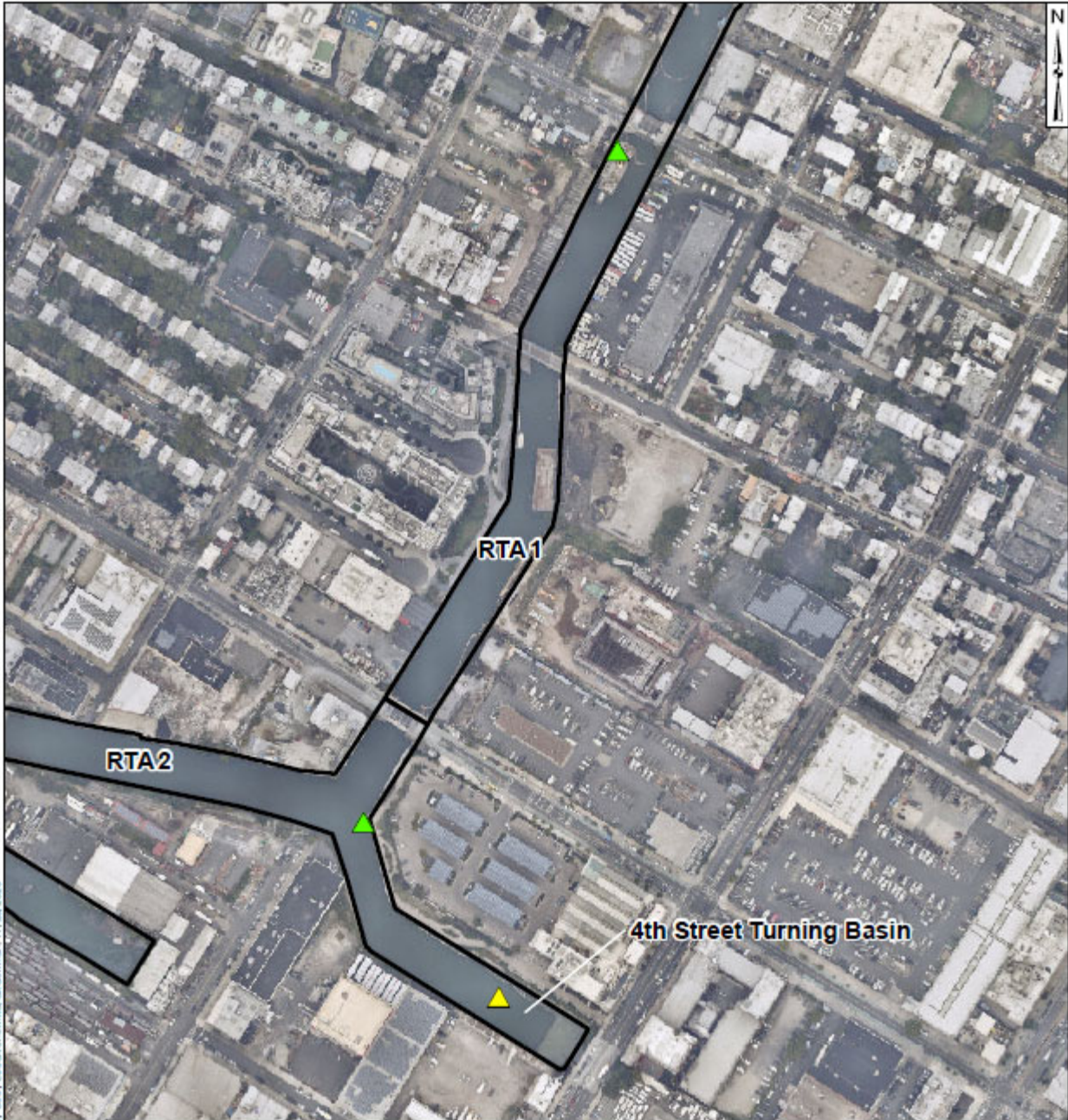
**B&B Engineers & Geologists**   
of new york, p.c.

*an affiliate of Geosyntec Consultants*




1255 Roberts Blvd, Suite 200  
Kennesaw, GA 30144  
Project Number JR0289A

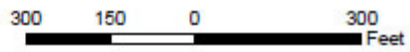
## **1. SCOPE OF MONITORING**

The following report summarizes water quality monitoring data collected during the week of May 9, 2022. In accordance with the Water Quality Monitoring Plan for In-waterway Construction Activities (WQMP) three turbidity buoys were deployed to monitor turbidity at the start of dredging between Union Street Bridge and the head of the canal. One turbidity buoy was deployed just south of the 3<sup>rd</sup> Street Bridge outside of the air curtain and traditional turbidity curtain. This buoy is referred to as the 3<sup>rd</sup> Street Sentinel Buoy. A second turbidity buoy was deployed just south of the Union Street Bridge and is referred to as the Union Street Sentinel Buoy. The third turbidity buoy was deployed in the Fourth Street Turning Basin in order to monitor background turbidity unaffected by in-water construction activities. This turbidity buoy is referred to as the Ambient Buoy. Prior to dredging north of the Union Street Bridge, on January 22, 2021 a fourth turbidity buoy was deployed just south of the Union Street Bridge and was referred to as the Union Street Sentinel Buoy. This fourth turbidity buoy was removed prior to the start of pipe pile installation. On Wednesday, September 22, 2021, the Carroll Street Sentinel Buoy was relocated to the west side of the canal where Degraw Street intersects the canal to monitor cofferdam removal activities conducted in the vicinity of the Flushing Tunnel. This buoy was renamed the Degraw Street Sentinel Buoy during cofferdam removal activities. On October 14, 2021, the Degraw Street Sentinel Buoy was removed from the canal for servicing. On October 20, 2021, the Degraw Street Sentinel Buoy was redeployed to its position south of the Carroll Street Bridge and was renamed to the Carroll Street Sentinel Buoy. On November 15, 2021, the Carroll Street Sentinel Buoy was moved to the Union Street Bridge and renamed the Union Street Sentinel Buoy. On December 3, 2021, the Union Street Buoy was removed from the canal for servicing and re-deployed at 3<sup>rd</sup> Street Bridge in preparation for the resumption of ISS operations. On December 8, 2021, a third sentinel buoy was deployed just south of the Carroll Street Bridge. On April 21, 2022, the buoy deployed at the Carroll Street Bridge was relocated to the Union Street Bridge. Each turbidity buoy was equipped with a YSI EXO3 water quality meter with optical turbidity sensor. The buoys were field calibrated and programmed such that readings were collected every 15 minutes. After each measurement, the turbidity data were transmitted to a File Transfer Portal (FTP) site via telemetry. No handheld measurements were collected during this reporting period. Visual observations of turbidity and sheen are summarized in Section 4.



**Legend**

-  Ambient Buoy
-  Sentinel Buoy
-  RTA Boundary



**Turbidity Buoy Locations**

Gowanus Canal, Brooklyn, NY

**B&B Engineers & Geologists**  
of new york, p.c.

*an affiliate of Geosyntec Consultants*

Kennesaw, GA

February 2021

Figure

**1**

## 2. REPORT OF EXCEEDANCES

No exceedances of the quantitative trigger or action level criteria were met during the reporting period. Further information is provided in Section 2.1.

- **Trigger criterion** – Any of the following:
  - The rolling average of the relevant sentinel buoy turbidity measurements over a one-hour period exceeds the rolling average of the ambient buoy turbidity measurements by 20 NTU excluding any eliminated outlier measurements and in-waterway construction activities cannot be immediately excluded as the source following consultation with EPA; or
  - Either an oil sheen or a turbidity plume is visually observed at the relevant sentinel buoy and in-waterway construction activities are readily identified as the source.
- **Action criterion** – Any of the following:
  - The rolling average of the turbidity measurements of the sentinel buoy outside of RTA1 over a one-hour period exceeds the rolling average of the ambient buoy turbidity measurements by 40 NTU excluding any eliminated outlier measurements and in-waterway construction activities cannot be immediately excluded as the source following consultation with EPA; or
  - Either an oil sheen or a turbidity plume is visually observed outside of RTA1 and any deployed engineering controls and in-waterway construction activities are readily identified as the source.

An outlier is defined as a reading that is outside the range of 50 to 200 percent of the average of the three previous readings. In addition, to be considered an outlier, the subsequent reading must return to a range of 75 to 133 percent of the average of the three readings preceding the outlier.

### 2.1 Response to Criteria Exceedances

The trigger level criterion serves to provide early notification to the contractor of construction activities that may lead to an exceedance of the action level criterion. In the event of an exceedance to the trigger criterion, the contractor will not be stopped, and the contractor will be directed to investigate the source of the exceedance and evaluate Best Management Practices (BMPs). In the event of an exceedance to the action level criterion, in-waterway construction activities may be slowed or temporarily suspended as necessary while the contractor investigates the source of the exceedance and appropriate mitigation and corrective measures are determined. A more detailed description of responses to exceedances of the trigger and action level criteria is provided in Section 4.2 of the WQMP.

There were no exceedances of the trigger or action level criteria during the reporting period.

### 3. TURBIDITY BUOY DATA

The following section provides turbidity data for the sentinel and ambient turbidity buoys from 7 AM to 6 PM from May 9 – May 13, 2022. One exceedance to the numerical rolling average trigger criterion occurred at the Union Street Sentinel Buoy, as described in Section 2. No exceedances to the numerical rolling average action criterion were observed during the reporting period.

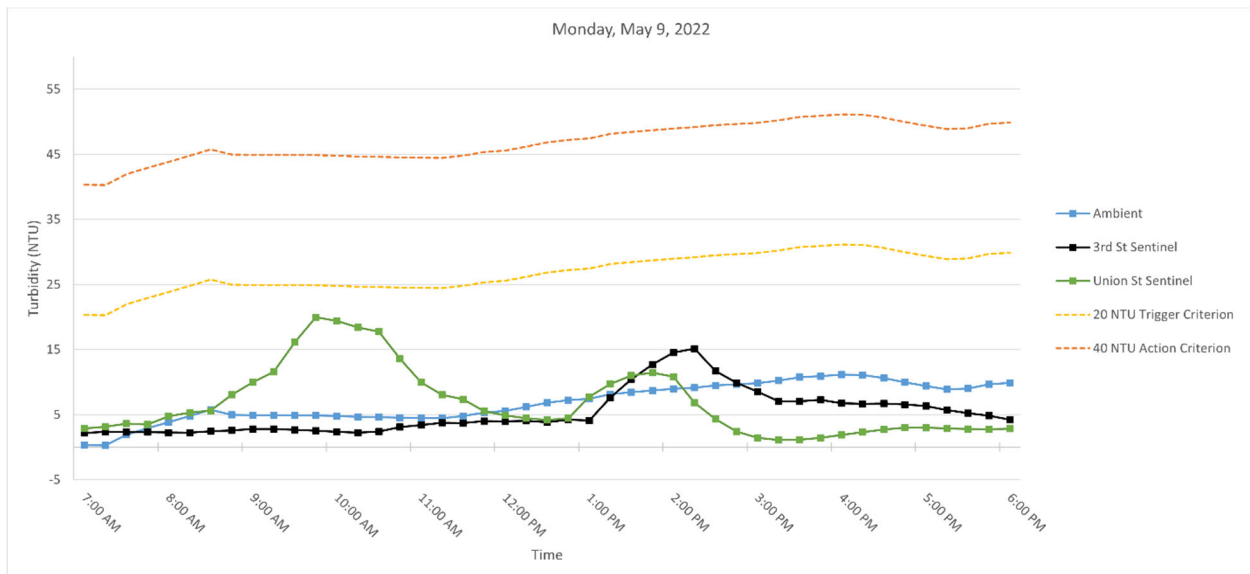
**Table 1** below provides a summary of the turbidity data for the reporting period.

Date	Average Rolling Average Difference (NTU)		Maximum Rolling Average Difference (NTU)	
	3rd St - Ambient	Union St - Ambient	3rd St - Ambient	Union St - Ambient
Monday, May 9, 2022	-1.55	-0.07	5.98	15.09
Tuesday, May 10, 2022	-3.03	3.14	-1.94	10.52
Wednesday, May 11, 2022	-2.04	3.06	0.78	9.23
Thursday, May 12, 2022	-0.03	1.36	6.12	9.88
Friday, May 13, 2022	-0.40	1.67	7.07	15.50

**Table 1.** Daily average and maximum differences between the rolling average turbidity readings from RTA1 sentinel buoys and the ambient buoy between 7 AM and 6 PM

#### 3.1 Monday, May 9, 2022

**Figure 2.** Hourly rolling average turbidity readings on Monday, May 9, 2022, from 7 AM to 6 PM.

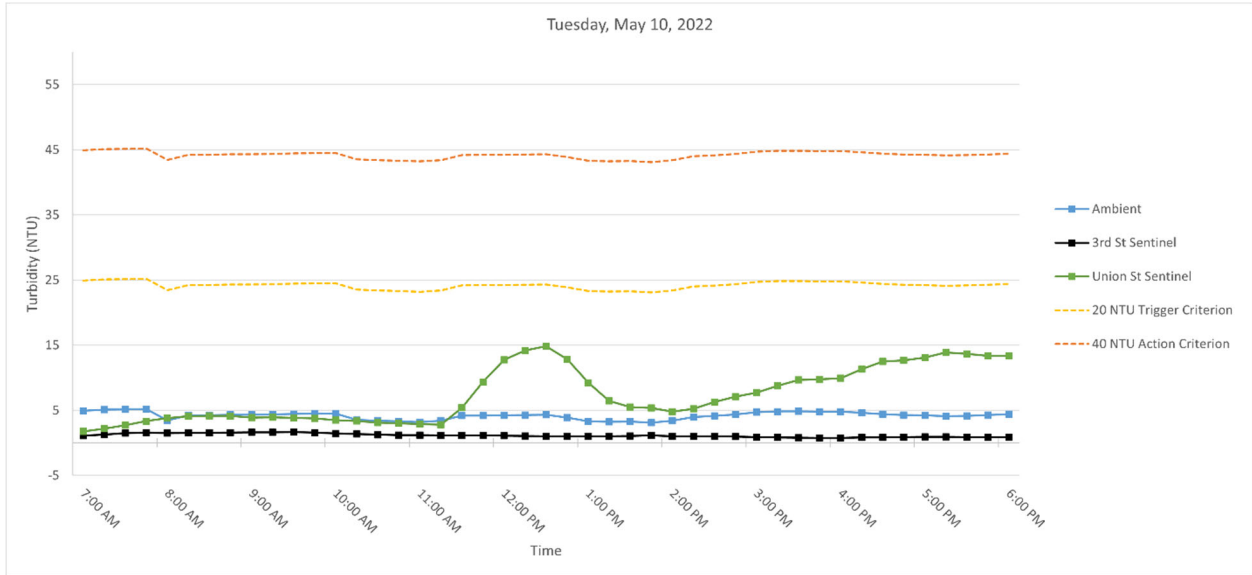


**Note:** A turbidity reading from the Ambient Buoy of 70.88 NTU at 6:00 PM was removed as an outlier in accordance with the water quality monitoring plan.



### 3.2 Tuesday, May 10, 2022

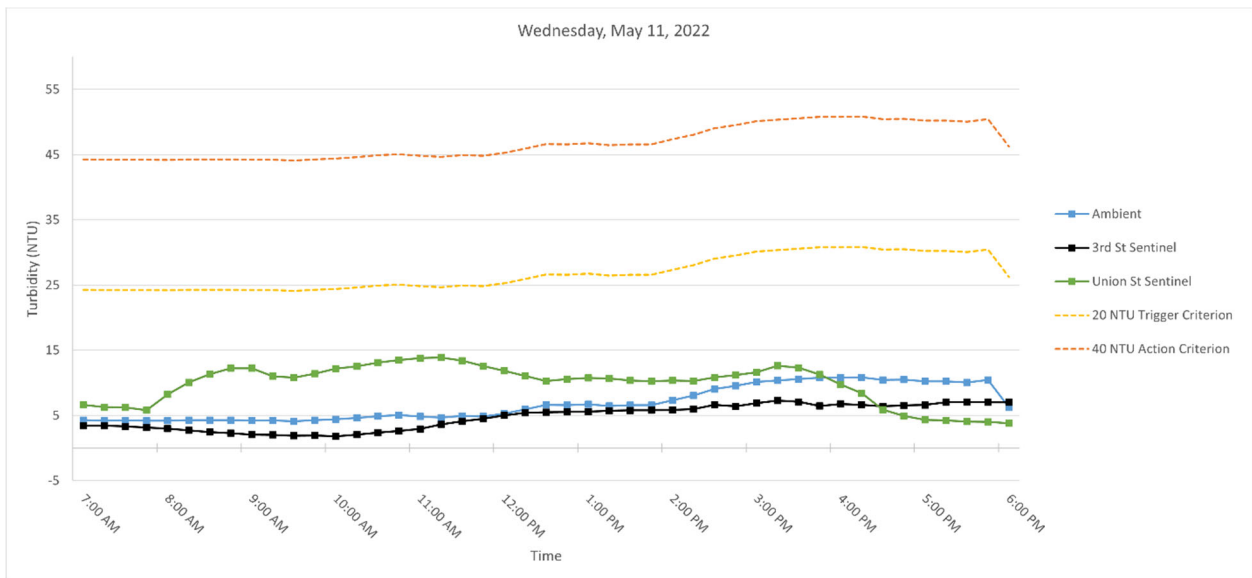
**Figure 3.** Hourly rolling average turbidity readings on Tuesday, May 10, 2022, from 7 AM to 6 PM.



**Note:** Turbidity readings from the Ambient Buoy of 56.83 NTU at 10:00 AM and 26.33 NTU at 12:15 PM were removed as outliers in accordance with the water quality monitoring plan.

### 3.3 Wednesday, May 11, 2022

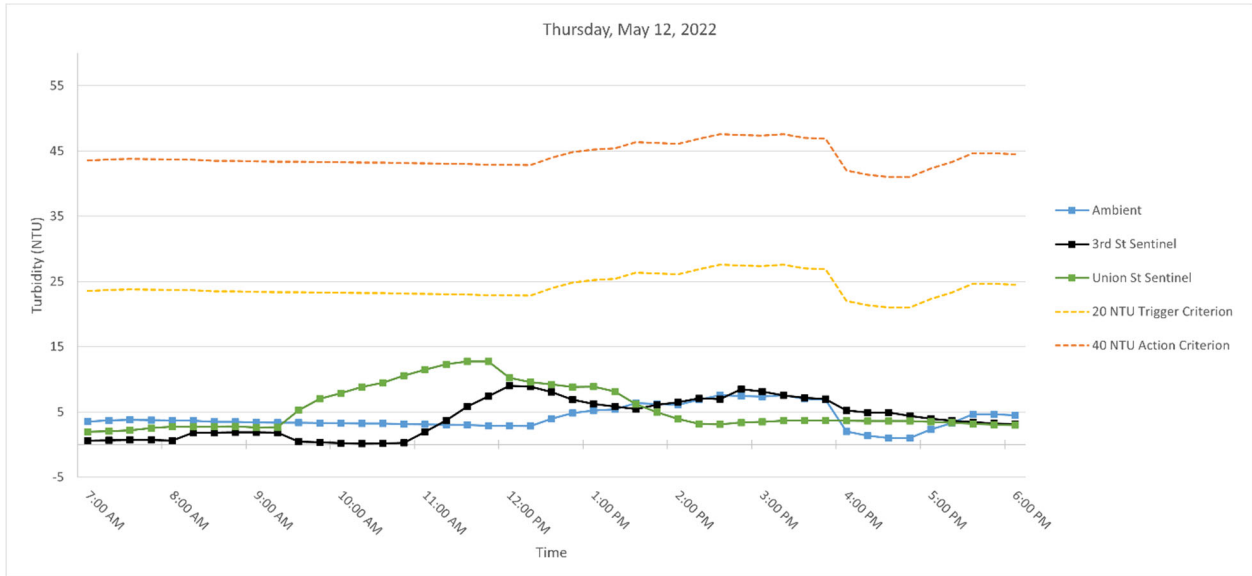
**Figure 4.** Hourly rolling average turbidity readings on Wednesday, May 11, 2022, from 7 AM to 6 PM.



**Note:** No outliers above 15 NTU were detected.

### 3.4 Thursday, May 12, 2022

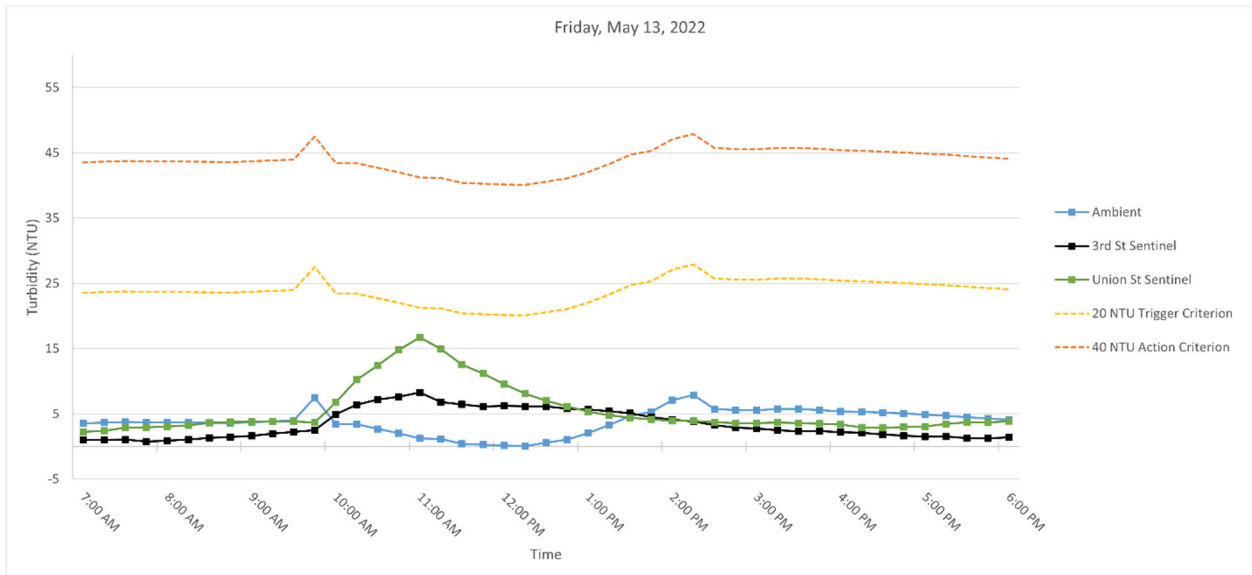
**Figure 5.** Hourly rolling average turbidity readings on Thursday, May 12, 2022, from 7 AM to 6 PM.



**Note:** Turbidity readings from the Ambient Buoy 104.20 NTU at 3:15 PM and 82.93 NTU at 3:30 PM were removed as outliers in accordance with the water quality monitoring plan.

### 3.5 Friday, May 13, 2022

**Figure 6.** Hourly rolling average turbidity readings on Friday, May 13, 2022, from 7 AM to 6 PM.



**Note:** No outliers above 15 NTU were detected.

## **SUMMARY OF VISUAL OBSERVATIONS**

Sheen was observed above background conditions during dredging/raking operations. These sheens were contained within RTA1 by the air curtain deployed south of the 3<sup>rd</sup> Street Bridge. A temporary boom was also deployed south of the Union Street Bridge to contain sheens north of the Union Street Bridge to the extent practicable.



**APPENDIX A**  
**Turbidity Data Tables**

## Monday, May 9, 2022

Time	Turbidity (NTU)			Rolling Average Turbidity (NTU)			Difference (NTU)	
	Ambient	3rd Street	Union Street	Ambient	3rd Street	Union Street	3rd St - Ambient	Union St - Ambient
7:00:00	0.17	2.62	2.86	0.33	2.21	2.90	1.88	2.57
7:15:00	0.09	2.37	3.75	0.27	2.36	3.15	2.09	2.89
7:30:00	8.82	2.15	4.8	1.95	2.33	3.62	0.38	1.67
7:45:00	5.27	1.98	3.37	2.92	2.32	3.49	-0.60	0.56
8:00:00	4.91	2.16	8.9	3.85	2.26	4.74	-1.60	0.88
8:15:00	4.82	2.52	5.67	4.78	2.24	5.30	-2.55	0.52
8:30:00	4.87	3.37	5.28	5.74	2.44	5.60	-3.30	-0.13
8:45:00	5	2.81	17.13	4.97	2.57	8.07	-2.41	3.10
9:00:00	5.06	3.09	12.86	4.93	2.79	9.97	-2.14	5.04
9:15:00	4.89	2.28	17.06	4.93	2.81	11.60	-2.11	6.67
9:30:00	4.71	1.78	28.31	4.91	2.67	16.13	-2.24	11.22
9:45:00	4.67	2.64	24.4	4.87	2.52	19.95	-2.35	15.09
10:00:00	4.69	2.06	14.4	4.80	2.37	19.41	-2.43	14.60
10:15:00	4.45	2.32	7.96	4.68	2.22	18.43	-2.47	13.74
10:30:00	4.54	3.32	13.8	4.61	2.42	17.77	-2.19	13.16
10:45:00	4.4	5.2	7.32	4.55	3.11	13.58	-1.44	9.03
11:00:00	4.29	4.17	6.4	4.47	3.41	9.98	-1.06	5.50
11:15:00	4.55	3.67	4.77	4.45	3.74	8.05	-0.71	3.60
11:30:00	6.22	2.1	4.62	4.80	3.69	7.38	-1.11	2.58
11:45:00	7.23	4.9	4.57	5.34	4.01	5.54	-1.33	0.20
12:00:00	5.63	5.06	4.05	5.58	3.98	4.88	-1.60	-0.70
12:15:00	7.39	4.54	4.26	6.20	4.05	4.45	-2.15	-1.75
12:30:00	7.79	2.68	3.5	6.85	3.86	4.20	-3.00	-2.65
12:45:00	8.04	4.06	5.91	7.22	4.25	4.46	-2.97	-2.76
13:00:00	8.45	4.08	21.11	7.46	4.08	7.77	-3.38	0.31
13:15:00	8.98	22.79	13.72	8.13	7.63	9.70	-0.50	1.57
13:30:00	9.05	18.6	10.84	8.46	10.44	11.02	1.98	2.55
13:45:00	9.07	14.09	5.7	8.72	12.72	11.46	4.01	2.74
14:00:00	9.26	13.16	2.81	8.96	14.54	10.84	5.58	1.87
14:15:00	9.47	7.08	1.22	9.17	15.14	6.86	5.98	-2.31
14:30:00	10.57	5.68	1.02	9.48	11.72	4.32	2.24	-5.17
14:45:00	9.89	9.45	1.23	9.65	9.89	2.40	0.24	-7.26
15:00:00	9.95	7.27	0.95	9.83	8.53	1.45	-1.30	-8.38
15:15:00	11.2	5.81	1.15	10.22	7.06	1.11	-3.16	-9.10
15:30:00	12.14	7.18	1.44	10.75	7.08	1.16	-3.67	-9.59
15:45:00	11.35	6.76	2.56	10.91	7.29	1.47	-3.61	-9.44
16:00:00	11.02	6.84	3.24	11.13	6.77	1.87	-4.36	-9.26
16:15:00	9.75	6.8	3.23	11.09	6.68	2.32	-4.41	-8.77
16:30:00	8.83	5.91	3.11	10.62	6.70	2.72	-3.92	-7.90
16:45:00	8.88	6.49	2.85	9.97	6.56	3.00	-3.41	-6.97
17:00:00	8.54	5.53	2.54	9.40	6.31	2.99	-3.09	-6.41
17:15:00	8.43	3.85	2.73	8.89	5.72	2.89	-3.17	-5.99
17:30:00	10.44	4.46	2.73	9.02	5.25	2.79	-3.78	-6.23
17:45:00	12.15	3.81	2.98	9.69	4.83	2.77	-4.86	-6.92
18:00:00	--	3.57	3.3	9.89	4.24	2.86	-5.65	-7.03

## Tuesday, May 10, 2022

Time	Turbidity (NTU)			Rolling Average Turbidity (NTU)			Difference (NTU)	
	Ambient	3rd Street	Union Street	Ambient	3rd Street	Union Street	3rd St - Ambient	Union St - Ambient
7:00:00	0.28	1.3	2.35	4.94	1.11	1.75	-3.83	-3.18
7:15:00	4.34	1.7	3.71	5.10	1.28	2.17	-3.82	-2.93
7:30:00	4.09	1.83	4.38	5.14	1.51	2.73	-3.63	-2.41
7:45:00	4.33	1.46	4.72	5.19	1.56	3.34	-3.63	-1.85
8:00:00	4.24	1.27	3.93	3.46	1.51	3.82	-1.94	0.36
8:15:00	4.19	1.52	3.88	4.24	1.56	4.12	-2.68	-0.11
8:30:00	4.26	1.66	3.78	4.22	1.55	4.14	-2.67	-0.08
8:45:00	4.5	1.97	4.32	4.30	1.58	4.13	-2.73	-0.18
9:00:00	4.37	1.62	3.45	4.31	1.61	3.87	-2.70	-0.44
9:15:00	4.5	1.46	4.32	4.36	1.65	3.95	-2.72	-0.41
9:30:00	4.52	1.55	3.38	4.43	1.65	3.85	-2.78	-0.58
9:45:00	4.61	1.25	3.31	4.50	1.57	3.76	-2.93	-0.74
10:00:00	--	1.29	3.09	4.50	1.43	3.51	-3.07	-0.99
10:15:00	0.44	1.22	2.75	3.52	1.35	3.37	-2.16	-0.15
10:30:00	4.09	0.97	3.09	3.42	1.26	3.12	-2.16	-0.29
10:45:00	4.17	1.21	2.84	3.33	1.19	3.02	-2.14	-0.31
11:00:00	4.13	1.31	2.7	3.21	1.20	2.89	-2.01	-0.31
11:15:00	4.19	1	2.63	3.40	1.14	2.80	-2.26	-0.60
11:30:00	4.42	1.31	15.84	4.20	1.16	5.42	-3.04	1.22
11:45:00	4.14	1	22.87	4.21	1.17	9.38	-3.04	5.17
12:00:00	4.33	0.94	19.71	4.24	1.11	12.75	-3.13	8.51
12:15:00	--	1.05	9.81	4.27	1.06	14.17	-3.21	9.90
12:30:00	4.4	0.75	5.96	4.32	1.01	14.84	-3.31	10.52
12:45:00	2.72	1.41	5.87	3.90	1.03	12.84	-2.87	8.95
13:00:00	1.77	0.93	4.92	3.31	1.02	9.25	-2.29	5.95
13:15:00	3.97	0.97	5.6	3.22	1.02	6.43	-2.19	3.22
13:30:00	3.6	1.23	5.19	3.29	1.06	5.51	-2.23	2.22
13:45:00	3.44	1.13	5.21	3.10	1.13	5.36	-1.97	2.26
14:00:00	4.19	0.77	3.01	3.39	1.01	4.79	-2.39	1.39
14:15:00	4.76	0.94	7.22	3.99	1.01	5.25	-2.98	1.25
14:30:00	4.74	1.1	10.82	4.15	1.03	6.29	-3.11	2.14
14:45:00	4.69	0.84	9.24	4.36	0.96	7.10	-3.41	2.74
15:00:00	5.08	0.71	8.22	4.69	0.87	7.70	-3.82	3.01
15:15:00	4.84	0.67	8.23	4.82	0.85	8.75	-3.97	3.92
15:30:00	4.79	0.69	11.87	4.83	0.80	9.68	-4.03	4.85
15:45:00	4.6	0.8	11.3	4.80	0.74	9.77	-4.06	4.97
16:00:00	4.66	0.84	10.09	4.79	0.74	9.94	-4.05	5.15
16:15:00	4.23	1.12	15.2	4.62	0.82	11.34	-3.80	6.71
16:30:00	3.83	0.86	14.06	4.42	0.86	12.50	-3.56	8.08
16:45:00	3.99	0.84	12.76	4.26	0.89	12.68	-3.37	8.42
17:00:00	4.42	0.94	13.35	4.23	0.92	13.09	-3.31	8.87
17:15:00	4.13	0.83	14.08	4.12	0.92	13.89	-3.20	9.77
17:30:00	4.46	1	14	4.17	0.89	13.65	-3.27	9.48
17:45:00	4.34	0.7	12.64	4.27	0.86	13.37	-3.41	9.10
18:00:00	4.65	0.92	12.73	4.40	0.88	13.36	-3.52	8.96

### Wednesday, May 11, 2022

Time	Turbidity (NTU)			Rolling Average Turbidity (NTU)			Difference (NTU)	
	Ambient	3rd Street	Union Street	Ambient	3rd Street	Union Street	3rd St - Ambient	Union St - Ambient
7:00:00	4.04	3.52	4.17	4.26	3.43	6.62	-0.83	2.36
7:15:00	4.23	3.21	4.53	4.21	3.44	6.30	-0.77	2.09
7:30:00	4.42	2.78	5.15	4.21	3.31	6.25	-0.90	2.04
7:45:00	4.25	2.72	10.07	4.21	3.15	5.80	-1.06	1.59
8:00:00	4.08	2.71	17.21	4.20	2.99	8.23	-1.22	4.02
8:15:00	4.48	2.11	13.3	4.29	2.71	10.05	-1.59	5.76
8:30:00	4.22	1.95	10.84	4.29	2.45	11.31	-1.84	7.02
8:45:00	4.29	1.83	9.7	4.26	2.26	12.22	-2.00	7.96
9:00:00	4.09	1.77	10.15	4.23	2.07	12.24	-2.16	8.01
9:15:00	4.04	2.46	11.18	4.22	2.02	11.03	-2.20	6.81
9:30:00	3.87	1.34	12.04	4.10	1.87	10.78	-2.23	6.68
9:45:00	5.17	2.15	14.01	4.29	1.91	11.42	-2.38	7.12
10:00:00	4.93	1.35	13.52	4.42	1.81	12.18	-2.61	7.76
10:15:00	5.1	2.97	11.93	4.62	2.05	12.54	-2.57	7.91
10:30:00	5.46	3.96	14.06	4.91	2.35	13.11	-2.55	8.21
10:45:00	4.58	2.76	14	5.05	2.64	13.50	-2.41	8.46
11:00:00	4.08	3.71	15.49	4.83	2.95	13.80	-1.88	8.97
11:15:00	4.1	4.81	14	4.66	3.64	13.90	-1.02	9.23
11:30:00	6.37	5.2	9.4	4.92	4.09	13.39	-0.83	8.47
11:45:00	5.04	6.05	10.1	4.83	4.51	12.60	-0.33	7.76
12:00:00	6.8	5.33	10.14	5.28	5.02	11.83	-0.26	6.55
12:15:00	7.24	5.56	11.68	5.91	5.39	11.06	-0.52	5.15
12:30:00	7.6	5.24	10.13	6.61	5.48	10.29	-1.13	3.68
12:45:00	6.25	5.55	10.92	6.59	5.55	10.59	-1.04	4.01
13:00:00	5.76	6.13	10.94	6.73	5.56	10.76	-1.17	4.03
13:15:00	5.38	6.11	9.59	6.45	5.72	10.65	-0.73	4.21
13:30:00	7.84	5.86	10.34	6.57	5.78	10.38	-0.79	3.82
13:45:00	7.72	5.27	9.28	6.59	5.78	10.21	-0.81	3.62
14:00:00	9.99	5.77	11.69	7.34	5.83	10.37	-1.51	3.03
14:15:00	9.4	6.77	10.47	8.07	5.96	10.27	-2.11	2.21
14:30:00	10.24	9.52	12.41	9.04	6.64	10.84	-2.40	1.80
14:45:00	10.33	4.78	12.18	9.54	6.42	11.21	-3.11	1.67
15:00:00	10.69	7.69	11.27	10.13	6.91	11.60	-3.22	1.47
15:15:00	11.23	7.62	16.82	10.38	7.28	12.63	-3.10	2.25
15:30:00	10.33	5.8	8.81	10.56	7.08	12.30	-3.48	1.73
15:45:00	11.44	6.34	7.2	10.80	6.45	11.26	-4.36	0.45
16:00:00	10.22	6.32	4.7	10.78	6.75	9.76	-4.03	-1.02
16:15:00	10.96	6.95	4.6	10.84	6.61	8.43	-4.23	-2.41
16:30:00	9.37	6.52	4.11	10.46	6.39	5.88	-4.08	-4.58
16:45:00	10.48	6.55	4.09	10.49	6.54	4.94	-3.96	-5.55
17:00:00	10.13	6.68	4.1	10.23	6.60	4.32	-3.63	-5.91
17:15:00	10.18	8.35	4.24	10.22	7.01	4.23	-3.21	-6.00
17:30:00	10.17	7.21	3.74	10.07	7.06	4.06	-3.00	-6.01
17:45:00	11.36	6.36	3.82	10.46	7.03	4.00	-3.43	-6.47
18:00:00	10.19	6.41	3.09	6.22	7.00	3.80	0.78	-2.42

## Thursday, May 12, 2022

Time	Turbidity (NTU)			Rolling Average Turbidity (NTU)			Difference (NTU)	
	Ambient	3rd Street	Union Street	Ambient	3rd Street	Union Street	3rd St - Ambient	Union St - Ambient
7:00:00	3.68	1.08	2.46	3.52	0.61	1.97	-2.91	-1.54
7:15:00	4.11	0.72	1.89	3.71	0.67	2.04	-3.04	-1.67
7:30:00	3.41	0.58	2.73	3.78	0.69	2.17	-3.09	-1.61
7:45:00	3.73	0.45	3.5	3.76	0.69	2.55	-3.07	-1.21
8:00:00	3.63	0.36	3.1	3.71	0.64	2.74	-3.07	-0.98
8:15:00	3.42	7.03	2.35	3.66	1.83	2.71	-1.83	-0.95
8:30:00	3.27	0.66	2.09	3.49	1.82	2.75	-1.68	-0.74
8:45:00	3.36	0.9	2.97	3.48	1.88	2.80	-1.60	-0.68
9:00:00	3.24	0.48	2.63	3.38	1.89	2.63	-1.50	-0.76
9:15:00	3.43	0.09	3.25	3.34	1.83	2.66	-1.51	-0.69
9:30:00	3.44	0.13	15.42	3.35	0.45	5.27	-2.90	1.92
9:45:00	3.12	0.26	10.81	3.32	0.37	7.02	-2.95	3.70
10:00:00	3.21	0.18	7.33	3.29	0.23	7.89	-3.06	4.60
10:15:00	2.88	0.09	7.41	3.22	0.15	8.84	-3.07	5.63
10:30:00	3.44	0.21	6.55	3.22	0.17	9.50	-3.04	6.29
10:45:00	2.98	0.55	20.69	3.13	0.26	10.56	-2.87	7.43
11:00:00	3.05	8.74	15.56	3.11	1.95	11.51	-1.16	8.40
11:15:00	2.83	8.98	11.25	3.04	3.71	12.29	0.68	9.26
11:30:00	2.84	10.8	9.63	3.03	5.86	12.74	2.83	9.71
11:45:00	2.73	7.95	6.69	2.89	7.40	12.76	4.52	9.88
12:00:00	2.93	8.51	7.91	2.88	9.00	10.21	6.12	7.33
12:15:00	2.89	8.26	12.38	2.84	8.90	9.57	6.06	6.73
12:30:00	8.45	4.82	9.45	3.97	8.07	9.21	4.10	5.24
12:45:00	7.16	4.85	7.74	4.83	6.88	8.83	2.05	4.00
13:00:00	4.79	4.74	6.91	5.24	6.24	8.88	0.99	3.63
13:15:00	3.69	6.6	4.25	5.40	5.85	8.15	0.46	2.75
13:30:00	7.62	6.22	2.6	6.34	5.45	6.19	-0.90	-0.15
13:45:00	7.78	8.02	3.33	6.21	6.09	4.97	-0.12	-1.24
14:00:00	6.65	6.87	2.62	6.11	6.49	3.94	0.38	-2.16
14:15:00	8.69	7.76	3.13	6.89	7.09	3.19	0.21	-3.70
14:30:00	7.14	6.06	3.78	7.58	6.99	3.09	-0.59	-4.48
14:45:00	6.88	13.75	4.04	7.43	8.49	3.38	1.06	-4.05
15:00:00	--	6.17	3.82	7.34	8.12	3.48	0.78	-3.86
15:15:00	--	4.01	3.45	7.57	7.55	3.64	-0.02	-3.93
15:30:00	--	5.82	3.49	7.01	7.16	3.72	0.15	-3.29
15:45:00	--	5.16	3.81	6.88	6.98	3.72	0.10	-3.16
16:00:00	2	5.03	3.73	2.00	5.24	3.66	3.24	1.66
16:15:00	0.75	4.49	3.53	1.38	4.90	3.60	3.53	2.23
16:30:00	0.31	4.02	3.51	1.02	4.90	3.61	3.88	2.59
16:45:00	0.92	3.25	3.52	1.00	4.39	3.62	3.40	2.63
17:00:00	7.57	2.95	3.13	2.31	3.95	3.48	1.64	1.17
17:15:00	7.04	3.64	3.19	3.32	3.67	3.38	0.35	0.06
17:30:00	7.56	3.26	2.51	4.68	3.42	3.17	-1.26	-1.51
17:45:00	0.14	3.08	2.97	4.65	3.24	3.06	-1.41	-1.58
18:00:00	0.14	2.71	2.95	4.49	3.13	2.95	-1.36	-1.54

## Friday, May 13, 2022

Time	Turbidity (NTU)			Rolling Average Turbidity (NTU)			Difference (NTU)	
	Ambient	3rd Street	Union Street	Ambient	3rd Street	Union Street	3rd St - Ambient	Union St - Ambient
7:00:00	3.67	0.64	2.65	3.55	1.02	2.23	-2.53	-1.33
7:15:00	4.11	0.66	2.32	3.67	1.02	2.39	-2.65	-1.28
7:30:00	3.77	0.85	3.73	3.76	1.06	2.87	-2.70	-0.89
7:45:00	3.51	0.97	3.29	3.72	0.76	2.95	-2.95	-0.77
8:00:00	3.51	1.37	3.32	3.71	0.90	3.06	-2.82	-0.65
8:15:00	3.47	1.55	3.55	3.67	1.08	3.24	-2.59	-0.43
8:30:00	3.82	1.84	4.25	3.62	1.32	3.63	-2.30	0.01
8:45:00	3.54	1.63	4.31	3.57	1.47	3.74	-2.10	0.17
9:00:00	4.15	1.75	3.49	3.70	1.63	3.78	-2.07	0.09
9:15:00	4.2	3	3.54	3.84	1.95	3.83	-1.88	-0.01
9:30:00	4.17	3.05	3.57	3.98	2.25	3.83	-1.72	-0.14
9:45:00	4.23	2.96	3.49	7.50	2.48	3.68	-5.02	-3.82
10:00:00	0.41	13.89	19.65	3.43	4.93	6.75	1.50	3.32
10:15:00	3.94	9.05	20.92	3.39	6.39	10.23	3.00	6.84
10:30:00	0.7	6.97	14.43	2.69	7.18	12.41	4.49	9.72
10:45:00	0.78	5.27	15.56	2.01	7.63	14.81	5.62	12.80
11:00:00	0.27	6.25	13.04	1.22	8.29	16.72	7.07	15.50
11:15:00	0.11	6.44	10.6	1.16	6.80	14.91	5.64	13.75
11:30:00	0.12	7.29	8.97	0.40	6.44	12.52	6.05	12.12
11:45:00	0.11	5.33	7.84	0.28	6.12	11.20	5.84	10.92
12:00:00	0.07	5.96	7.27	0.14	6.25	9.54	6.12	9.41
12:15:00	0	5.79	5.8	0.08	6.16	8.10	6.08	8.01
12:30:00	2.68	6.26	5.15	0.60	6.13	7.01	5.53	6.41
12:45:00	2.52	5.7	4.68	1.08	5.81	6.15	4.73	5.07
13:00:00	4.98	4.57	3.79	2.05	5.66	5.34	3.61	3.29
13:15:00	6.24	4.73	4.47	3.28	5.41	4.78	2.13	1.49
13:30:00	7.02	4.24	4.05	4.69	5.10	4.43	0.41	-0.26
13:45:00	5.87	3.31	3.65	5.33	4.51	4.13	-0.82	-1.20
14:00:00	4.47	3.57	3.69	7.10	4.08	3.93	-3.02	-3.17
14:15:00	5.36	3.3	3.74	7.90	3.83	3.92	-4.07	-3.98
14:30:00	5.95	1.88	3.5	5.73	3.26	3.73	-2.47	-2.01
14:45:00	6.22	2.37	3.26	5.57	2.89	3.57	-2.69	-2.01
15:00:00	5.61	2.56	3.79	5.52	2.74	3.60	-2.79	-1.93
15:15:00	5.64	2.39	3.97	5.76	2.50	3.65	-3.26	-2.10
15:30:00	5.37	2.32	3.3	5.76	2.30	3.56	-3.45	-2.19
15:45:00	5.16	2.13	3.17	5.60	2.35	3.50	-3.25	-2.10
16:00:00	5.14	1.47	2.56	5.38	2.17	3.36	-3.21	-2.03
16:15:00	5.27	2.16	1.75	5.32	2.09	2.95	-3.22	-2.37
16:30:00	4.97	1.18	3.52	5.18	1.85	2.86	-3.33	-2.32
16:45:00	4.75	1.3	3.8	5.06	1.65	2.96	-3.41	-2.10
17:00:00	4.35	1.3	3.6	4.90	1.48	3.05	-3.41	-1.85
17:15:00	4.31	1.68	4.52	4.73	1.52	3.44	-3.21	-1.29
17:30:00	4.14	1.03	3.16	4.50	1.30	3.72	-3.21	-0.78
17:45:00	3.76	0.93	3.36	4.26	1.25	3.69	-3.01	-0.57
18:00:00	3.97	2.17	4.83	4.11	1.42	3.89	-2.68	-0.21