

**GOWANUS CANAL SUPERFUND SITE
RTA1 REMEDIAL CONSTRUCTION
Water Quality Monitoring Weekly Data Summary**

PERIOD: May 23 – May 27, 2022

Date of Report: June 01, 2022

Report Contents

- Scope of Monitoring
- Report of Exceedances
- Turbidity Buoy Data
- Summary of Visual Observations

Prepared by

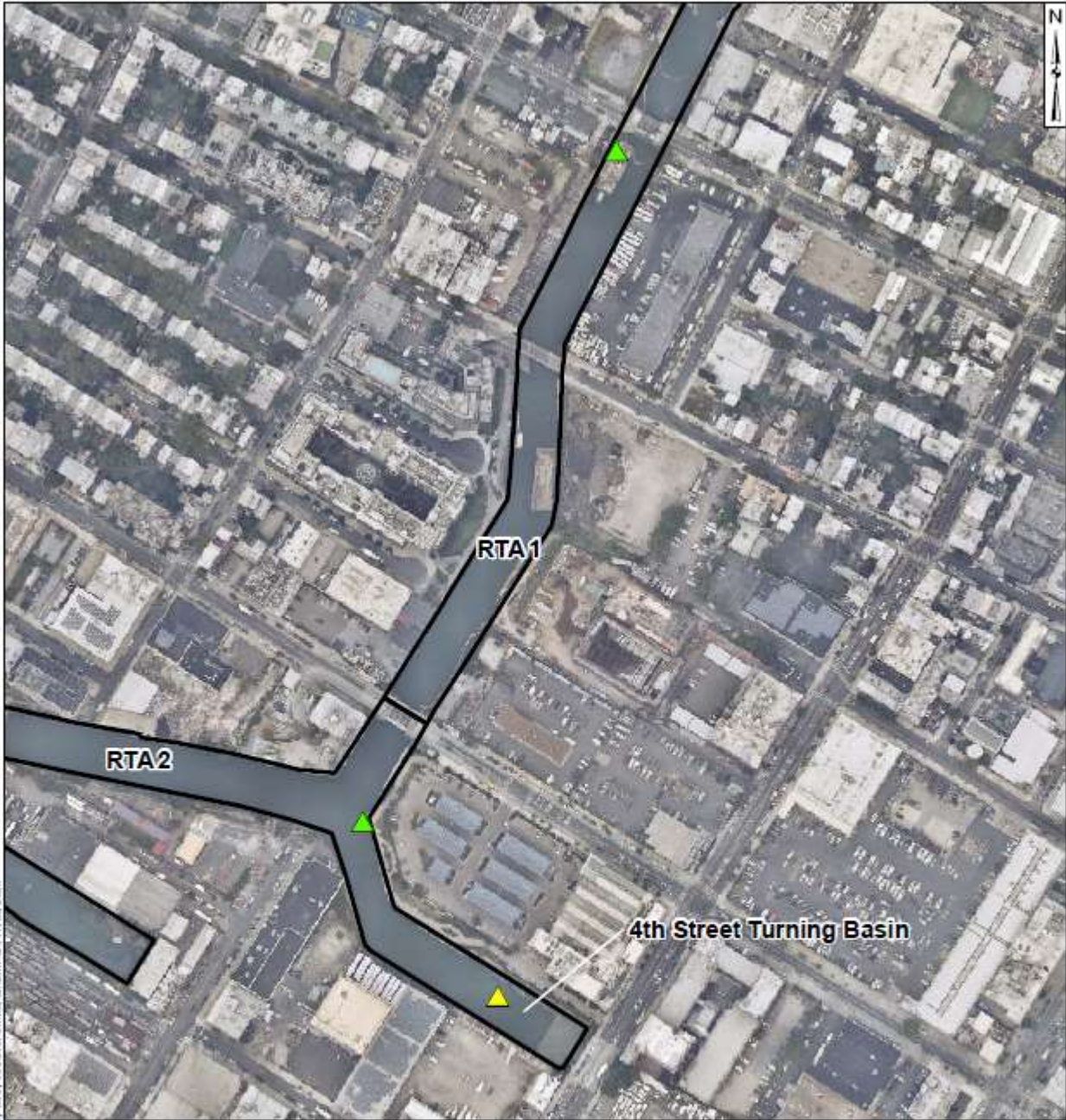
B&B Engineers & Geologists 
of new york, p.c.

an affiliate of Geosyntec Consultants

1255 Roberts Blvd, Suite 200
Kennesaw, GA 30144
Project Number JR0289A

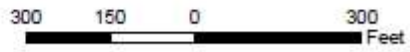
1. SCOPE OF MONITORING

The following report summarizes water quality monitoring data collected during the week of May 23, 2022. In accordance with the Water Quality Monitoring Plan for In-waterway Construction Activities (WQMP) three turbidity buoys were deployed to monitor turbidity at the start of dredging between Union Street Bridge and the head of the canal. One turbidity buoy was deployed just south of the 3rd Street Bridge outside of the air curtain and traditional turbidity curtain. This buoy is referred to as the 3rd Street Sentinel Buoy. A second turbidity buoy was deployed just south of the Union Street Bridge and is referred to as the Union Street Sentinel Buoy. The third turbidity buoy was deployed in the Fourth Street Turning Basin in order to monitor background turbidity unaffected by in-water construction activities. This turbidity buoy is referred to as the Ambient Buoy. Prior to dredging north of the Union Street Bridge, on January 22, 2021 a fourth turbidity buoy was deployed just south of the Union Street Bridge and was referred to as the Union Street Sentinel Buoy. This fourth turbidity buoy was removed prior to the start of pipe pile installation. On Wednesday, September 22, 2021, the Carroll Street Sentinel Buoy was relocated to the west side of the canal where Degraw Street intersects the canal to monitor cofferdam removal activities conducted in the vicinity of the Flushing Tunnel. This buoy was renamed the Degraw Street Sentinel Buoy during cofferdam removal activities. On October 14, 2021, the Degraw Street Sentinel Buoy was removed from the canal for servicing. On October 20, 2021, the Degraw Street Sentinel Buoy was redeployed to its position south of the Carroll Street Bridge and was renamed to the Carroll Street Sentinel Buoy. On November 15, 2021, the Carroll Street Sentinel Buoy was moved to the Union Street Bridge and renamed the Union Street Sentinel Buoy. On December 3, 2021, the Union Street Buoy was removed from the canal for servicing and re-deployed at 3rd Street Bridge in preparation for the resumption of ISS operations. On December 8, 2021, a third sentinel buoy was deployed just south of the Carroll Street Bridge. On April 21, 2022, the buoy deployed at the Carroll Street Bridge was relocated to the Union Street Bridge. Each turbidity buoy was equipped with a YSI EXO3 water quality meter with optical turbidity sensor. The buoys were field calibrated and programmed such that readings were collected every 15 minutes. After each measurement, the turbidity data were transmitted to a File Transfer Portal (FTP) site via telemetry. No handheld measurements were collected during this reporting period. Visual observations of turbidity and sheen are summarized in Section 4.



Legend

- ▲ Ambient Buoy
- ▲ Sentinel Buoy
- RTA Boundary



Turbidity Buoy Locations

Gowanus Canal, Brooklyn, NY

B&B Engineers & Geologists ^{PC}
of new york, p.c.

an affiliate of Geosyntec Consultants

Kennesaw, GA

February 2021

Figure

1

2. REPORT OF EXCEEDANCES

No exceedances of the quantitative trigger or action level criteria were met during the reporting period. Further information is provided in Section 2.1.

- **Trigger criterion** – Any of the following:
 - The rolling average of the relevant sentinel buoy turbidity measurements over a one-hour period exceeds the rolling average of the ambient buoy turbidity measurements by 20 NTU excluding any eliminated outlier measurements and in-waterway construction activities cannot be immediately excluded as the source following consultation with EPA; or
 - Either an oil sheen or a turbidity plume is visually observed at the relevant sentinel buoy and in-waterway construction activities are readily identified as the source.
- **Action criterion** – Any of the following:
 - The rolling average of the turbidity measurements of the sentinel buoy outside of RTA1 over a one-hour period exceeds the rolling average of the ambient buoy turbidity measurements by 40 NTU excluding any eliminated outlier measurements and in-waterway construction activities cannot be immediately excluded as the source following consultation with EPA; or
 - Either an oil sheen or a turbidity plume is visually observed outside of RTA1 and any deployed engineering controls and in-waterway construction activities are readily identified as the source.

An outlier is defined as a reading that is outside the range of 50 to 200 percent of the average of the three previous readings. In addition, to be considered an outlier, the subsequent reading must return to a range of 75 to 133 percent of the average of the three readings preceding the outlier.

2.1 Response to Criteria Exceedances

The trigger level criterion serves to provide early notification to the contractor of construction activities that may lead to an exceedance of the action level criterion. In the event of an exceedance to the trigger criterion, the contractor will not be stopped, and the contractor will be directed to investigate the source of the exceedance and evaluate Best Management Practices (BMPs). In the event of an exceedance to the action level criterion, in-waterway construction activities may be slowed or temporarily suspended as necessary while the contractor investigates the source of the exceedance and appropriate mitigation and corrective measures are determined. A more detailed description of responses to exceedances of the trigger and action level criteria is provided in Section 4.2 of the WQMP.

There were no exceedances of the trigger or action level criteria during the reporting period.

3. TURBIDITY BUOY DATA

The following section provides turbidity data for the sentinel and ambient turbidity buoys from 7 AM to 6 PM from May 23 – May 27, 2022. No exceedances to the numerical rolling average trigger criterion or the numerical rolling average action criterion were observed during the reporting period.

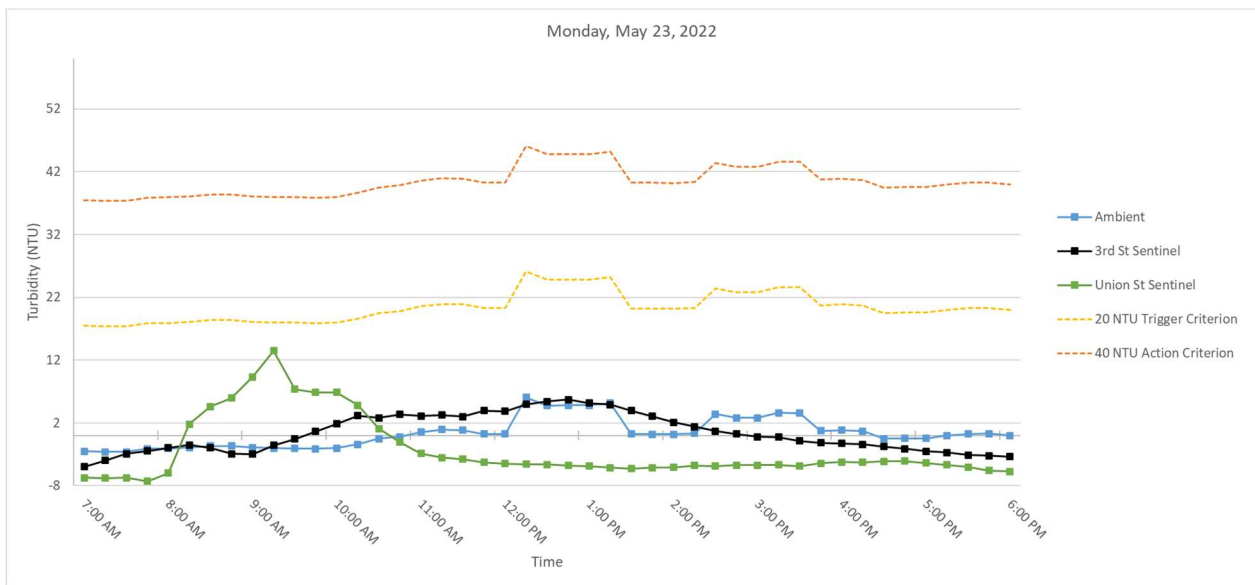
Table 1 below provides a summary of the turbidity data for the reporting period.

Date	Average Rolling Average Difference (NTU)		Maximum Rolling Average Difference (NTU)	
	3rd St - Ambient	Union St - Ambient	3rd St - Ambient	Union St - Ambient
Monday, May 23, 2022	-0.06	-2.74	4.55	15.51
Tuesday, May 24, 2022	-1.79	-4.62	9.00	7.99
Wednesday, May 25, 2022	0.58	-5.17	11.00	-2.41
Thursday, May 26, 2022	-0.05	-1.26	13.77	7.44
Friday, May 27, 2022	-2.60	-1.22	1.14	15.11

Table 1. Daily average and maximum differences between the rolling average turbidity readings from RTA1 sentinel buoys and the ambient buoy between 7 AM and 6 PM

3.1 Monday, May 23, 2022

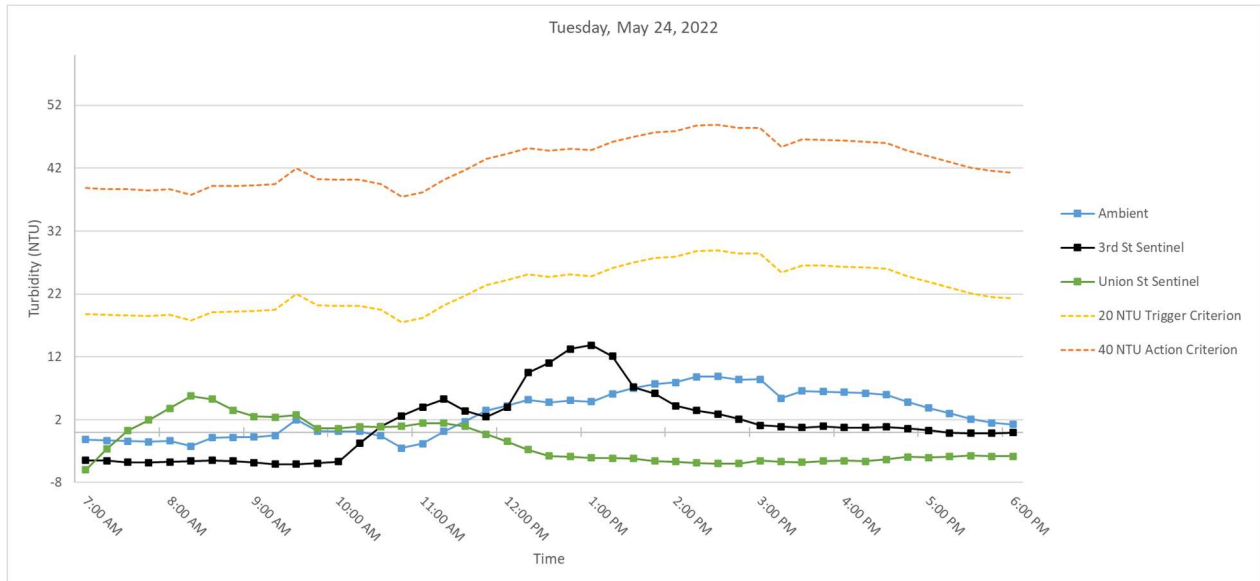
Figure 2. Hourly rolling average turbidity readings on Monday, May 23, 2022, from 7 AM to 6 PM.



Note: Turbidity readings from the Ambient Buoy of 24.45 NTU at 1:30 PM and 37.76 NTU at 4:00 PM, and from the Union Street Sentinel Buoy of 63.94 NTU at 9:00 AM were removed as outliers in accordance with the water quality monitoring plan.

3.2 Tuesday, May 24, 2022

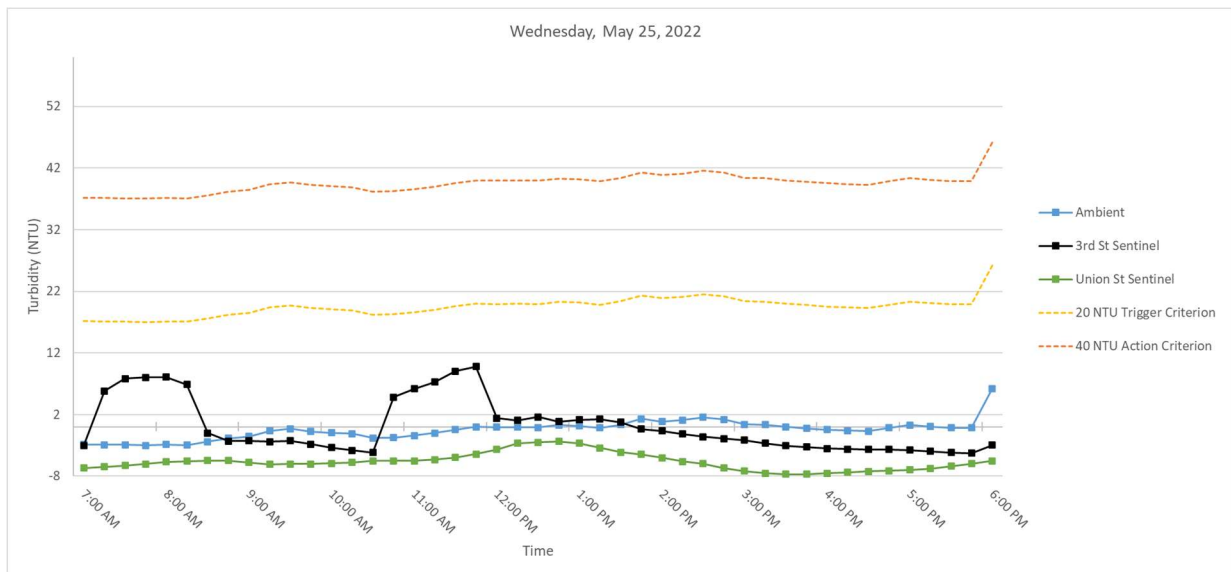
Figure 3. Hourly rolling average turbidity readings on Tuesday, May 24, 2022, from 7 AM to 6 PM.



Note: No outlier turbidity readings above 20 NTU were detected.

3.3 Wednesday, May 25, 2022

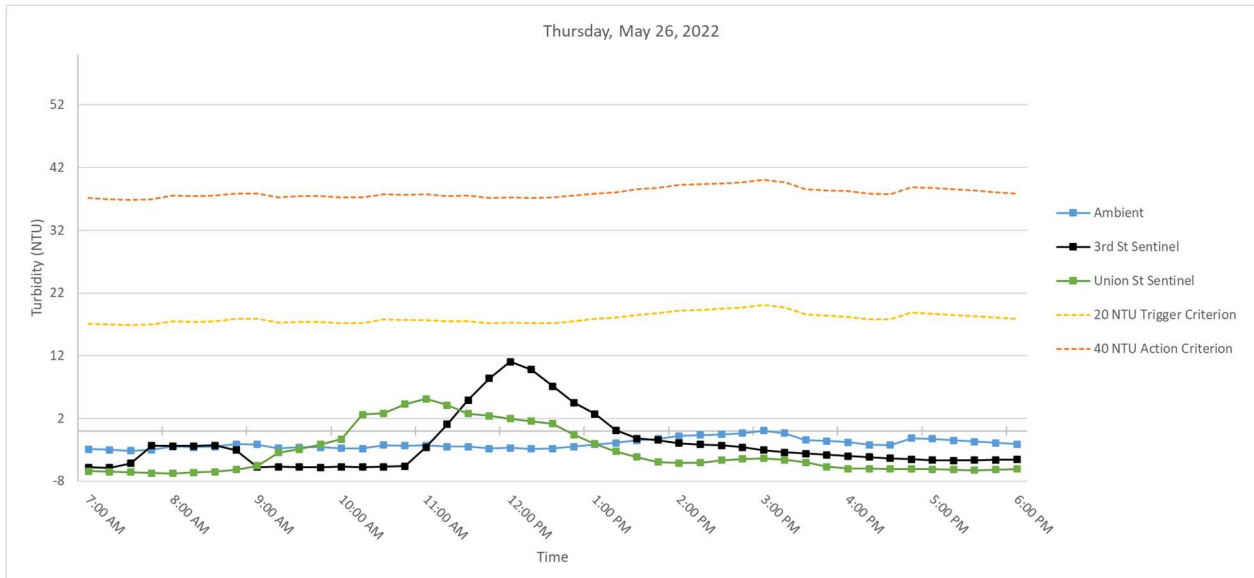
Figure 4. Hourly rolling average turbidity readings on Wednesday, May 25, 2022, from 7 AM to 6 PM.



Note: A turbidity reading from the Ambient Buoy of 40.92 NTU at 7:30 AM was removed as an outlier in accordance with the water quality monitoring plan.

3.4 Thursday, May 26, 2022

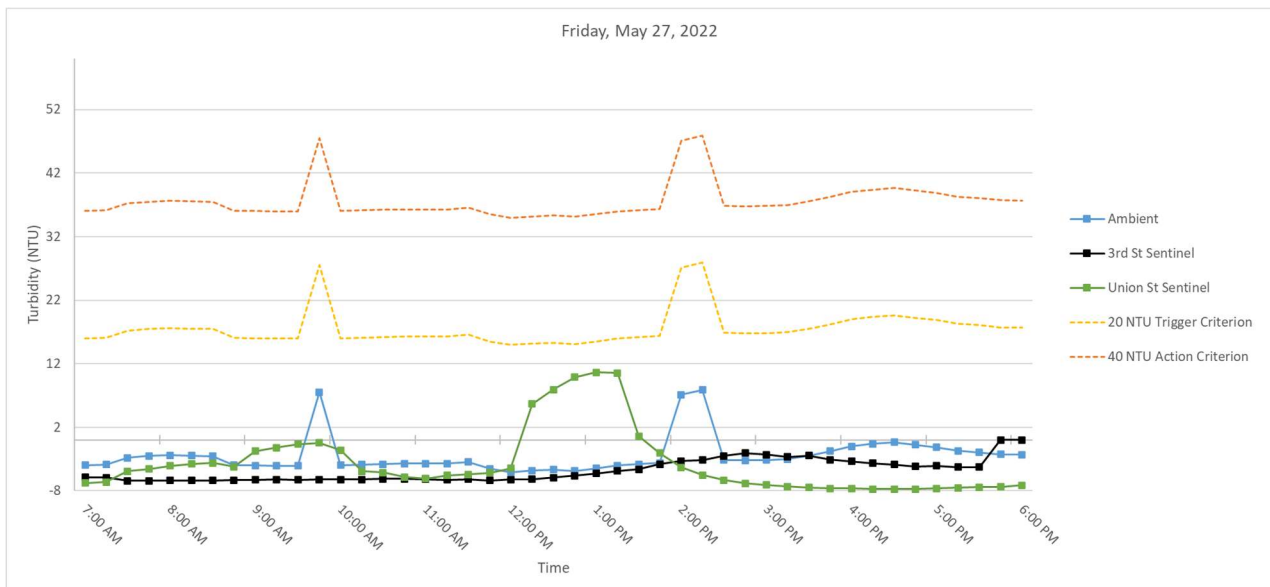
Figure 5. Hourly rolling average turbidity readings on Thursday, May 26, 2022, from 7 AM to 6 PM.



Note: No outlier turbidity readings above 20 NTU were detected.

3.5 Friday, May 27, 2022

Figure 6. Hourly rolling average turbidity readings on Friday, May 27, 2022, from 7 AM to 6 PM.



Note: A turbidity reading from the Ambient Buoy of 50.00 NTU at 11:15 AM was removed as outliers in accordance with the water quality monitoring plan.

SUMMARY OF VISUAL OBSERVATIONS

Sheen was observed above background conditions during work operations. These sheens were contained within RTA1 by the air curtain deployed south of the 3rd Street Bridge. A temporary boom was also deployed south of the Union Street Bridge to contain sheens north of the Union Street Bridge to the extent practicable.

APPENDIX A
Turbidity Data Tables

Monday, May 23, 2022

Time	Turbidity (NTU)			Rolling Average Turbidity (NTU)			Difference (NTU)	
	Ambient	3rd Street	Union Street	Ambient	3rd Street	Union Street	3rd St - Ambient	Union St - Ambient
7:00:00	-2.71	-5.14	-7.07	-2.53	-4.98	-6.71	-2.45	-4.19
7:15:00	-2.53	-0.8	-7.17	-2.62	-3.98	-6.77	-1.36	-4.15
7:30:00	--	0.95	-7.36	-2.62	-2.89	-6.74	-0.27	-4.12
7:45:00	-1.08	-1.47	-7.54	-2.11	-2.44	-7.29	-0.34	-5.18
8:00:00	-1.98	-3.23	-0.73	-2.08	-1.94	-5.97	0.14	-3.90
8:15:00	-1.99	-3.07	31.9	-1.90	-1.52	1.82	0.37	3.72
8:30:00	-1.55	-2.98	6.86	-1.65	-1.96	4.63	-0.31	6.28
8:45:00	-1.59	-3.69	-0.76	-1.64	-2.89	5.95	-1.25	7.58
9:00:00	-2.53	-1.88	--	-1.93	-2.97	9.32	-1.04	11.25
9:15:00	-2.33	3.71	16.04	-2.00	-1.58	13.51	0.42	15.51
9:30:00	-2.17	1.99	7.42	-2.03	-0.57	7.39	1.46	9.42
9:45:00	-2.02	3.06	4.83	-2.13	0.64	6.88	2.77	9.01
10:00:00	-1	2.28	-0.83	-2.01	1.83	6.87	3.84	8.88
10:15:00	0.58	4.77	-3.33	-1.39	3.16	4.83	4.55	6.21
10:30:00	2.12	1.86	-2.5	-0.50	2.79	1.12	3.29	1.62
10:45:00	-0.59	4.95	-3.37	-0.18	3.38	-1.04	3.57	-0.86
11:00:00	1.64	1.8	-4.29	0.55	3.13	-2.86	2.58	-3.41
11:15:00	--	3.02	-4.06	0.94	3.28	-3.51	2.34	-4.45
11:30:00	0.25	3.29	-4.71	0.86	2.98	-3.79	2.13	-4.64
11:45:00	-0.3	6.84	-4.95	0.25	3.98	-4.28	3.73	-4.53
12:00:00	-0.51	4.28	-4.28	0.27	3.85	-4.46	3.58	-4.73
12:15:00	24.91	7.38	-4.75	6.09	4.96	-4.55	-1.13	-10.64
12:30:00	-0.46	5.41	-4.29	4.78	5.44	-4.60	0.66	-9.37
12:45:00	0.32	4.59	-5.51	4.79	5.70	-4.76	0.91	-9.55
13:00:00	-0.17	4.16	-5.63	4.82	5.16	-4.89	0.35	-9.71
13:15:00	1.23	3.05	-5.36	5.17	4.92	-5.11	-0.25	-10.27
13:30:00	--	2.58	-5.56	0.23	3.96	-5.27	3.73	-5.50
13:45:00	-0.5	0.95	-3.56	0.22	3.07	-5.12	2.85	-5.34
14:00:00	0.27	-0.22	-5.2	0.21	2.10	-5.06	1.90	-5.27
14:15:00	0.31	0.58	-4.12	0.33	1.39	-4.76	1.06	-5.09
14:30:00	13.62	-0.31	-5.86	3.43	0.72	-4.86	-2.71	-8.29
14:45:00	0.23	--	-4.92	2.79	0.25	-4.73	-2.54	-7.52
15:00:00	-0.45	-0.91	-3.56	2.80	-0.22	-4.73	-3.01	-7.53
15:15:00	4.31	-0.45	-4.9	3.60	-0.27	-4.67	-3.88	-8.28
15:30:00	0.19	-1.71	-5.03	3.58	-0.85	-4.85	-4.43	-8.43
15:45:00	-0.61	-1.47	-3.73	0.73	-1.14	-4.43	-1.87	-5.16
16:00:00	--	-1.84	-3.83	0.86	-1.28	-4.21	-2.14	-5.07
16:15:00	-1.17	-1.51	-3.91	0.68	-1.40	-4.28	-2.08	-4.96
16:30:00	-0.49	-2.25	-4.07	-0.52	-1.76	-4.11	-1.24	-3.59
16:45:00	0.55	-3.39	-4.85	-0.43	-2.09	-4.08	-1.66	-3.65
17:00:00	-0.64	-3.59	-5.08	-0.44	-2.52	-4.35	-2.08	-3.91
17:15:00	1.79	-2.85	-5.44	0.01	-2.72	-4.67	-2.73	-4.68
17:30:00	0.11	-3.37	-5.69	0.26	-3.09	-5.03	-3.35	-5.29
17:45:00	-0.42	-2.93	-6.72	0.28	-3.23	-5.56	-3.50	-5.83
18:00:00	-0.94	-4.04	-5.57	-0.02	-3.36	-5.70	-3.34	-5.68

Tuesday, May 24, 2022

Time	Turbidity (NTU)			Rolling Average Turbidity (NTU)			Difference (NTU)	
	Ambient	3rd Street	Union Street	Ambient	3rd Street	Union Street	3rd St - Ambient	Union St - Ambient
7:00:00	2.35	-4.68	-6.92	-1.17	-4.46	-5.98	-3.29	-4.81
7:15:00	-2.1	-5.19	10.04	-1.32	-4.51	-2.65	-3.20	-1.33
7:30:00	-2.77	-4.84	7.89	-1.39	-4.75	0.23	-3.36	1.62
7:45:00	-2.42	-4.33	--	-1.51	-4.82	1.96	-3.31	3.47
8:00:00	-1.78	-4.51	4.15	-1.34	-4.71	3.79	-3.37	5.13
8:15:00	-1.96	-4.05	1.05	-2.21	-4.58	5.78	-2.38	7.99
8:30:00	4.55	-4.68	7.98	-0.88	-4.48	5.27	-3.61	6.14
8:45:00	-2.41	-5.29	0.93	-0.80	-4.57	3.53	-3.77	4.33
9:00:00	-2.17	-5.51	-1.54	-0.75	-4.81	2.51	-4.05	3.27
9:15:00	--	-5.88	3.64	-0.50	-5.08	2.41	-4.58	2.91
9:30:00	8.1	-3.98	--	2.02	-5.07	2.75	-7.09	0.74
9:45:00	-2.63	-4.05	-0.57	0.22	-4.94	0.62	-5.16	0.39
10:00:00	-2.76	-3.97	0.87	0.14	-4.68	0.60	-4.81	0.47
10:15:00	-2.16	9.07	-0.28	0.14	-1.76	0.92	-1.90	0.78
10:30:00	-3.33	7.54	3.48	-0.56	0.92	0.88	1.48	1.43
10:45:00	-1.72	4.34	1.28	-2.52	2.59	0.96	5.11	3.48
11:00:00	0.91	3.06	1.92	-1.81	4.01	1.45	5.82	3.27
11:15:00	7.08	2.23	0.96	0.16	5.25	1.47	5.09	1.32
11:30:00	5.62	-0.07	-2.76	1.71	3.42	0.98	1.71	-0.74
11:45:00	5.36	2.61	-3.02	3.45	2.43	-0.32	-1.02	-3.77
12:00:00	2.19	11.95	-4.33	4.23	3.96	-1.45	-0.28	-5.68
12:15:00	5.51	30.57	-4.62	5.15	9.46	-2.75	4.31	-7.91
12:30:00	5.02	10.09	-4.07	4.74	11.03	-3.76	6.29	-8.50
12:45:00	7.26	11.11	-3.37	5.07	13.27	-3.88	8.20	-8.95
13:00:00	4.24	5.52	-3.91	4.84	13.85	-4.06	9.00	-8.90
13:15:00	8.69	3.16	-4.58	6.14	12.09	-4.11	5.95	-10.25
13:30:00	9.85	5.92	-4.85	7.01	7.16	-4.16	0.15	-11.17
13:45:00	8.37	5.25	-6.06	7.68	6.19	-4.55	-1.49	-12.24
14:00:00	8.42	1.34	-3.83	7.91	4.24	-4.65	-3.68	-12.56
14:15:00	--	1.52	-5.06	8.83	3.44	-4.88	-5.39	-13.71
14:30:00	--	0.62	-5.1	8.88	2.93	-4.98	-5.95	-13.86
14:45:00	--	1.75	-4.74	8.40	2.10	-4.96	-6.30	-13.35
15:00:00	--	0.34	-3.74	8.42	1.11	-4.49	-7.31	-12.91
15:15:00	5.43	0.4	-4.59	5.43	0.93	-4.65	-4.50	-10.08
15:30:00	7.69	0.63	-5.69	6.56	0.75	-4.77	-5.81	-11.33
15:45:00	6.29	1.61	-4.19	6.47	0.95	-4.59	-5.52	-11.06
16:00:00	6.03	0.84	-4.39	6.36	0.76	-4.52	-5.60	-10.88
16:15:00	5.6	0.25	-4.26	6.21	0.75	-4.62	-5.46	-10.83
16:30:00	4.25	--	-3.1	5.97	0.83	-4.33	-5.14	-10.30
16:45:00	1.8	-0.27	-3.53	4.79	0.61	-3.89	-4.19	-8.69
17:00:00	1.67	0.38	-4.77	3.87	0.30	-4.01	-3.57	-7.88
17:15:00	1.76	-0.79	-3.63	3.02	-0.11	-3.86	-3.12	-6.87
17:30:00	0.93	-0.02	-3.52	2.08	-0.18	-3.71	-2.26	-5.79
17:45:00	1.48	-0.1	-3.59	1.53	-0.16	-3.81	-1.69	-5.34
18:00:00	0.46	0.35	-3.68	1.26	-0.04	-3.84	-1.30	-5.10

Wednesday, May 25, 2022

Time	Turbidity (NTU)			Rolling Average Turbidity (NTU)			Difference (NTU)	
	Ambient	3rd Street	Union Street	Ambient	3rd Street	Union Street	3rd St - Ambient	Union St - Ambient
7:00:00	-1.36	1.31	-6.17	-2.85	-3.04	-6.68	-0.19	-3.83
7:15:00	-3.36	38.58	-6.01	-2.89	5.83	-6.45	8.72	-3.56
7:30:00	-3.82	4.75	-6.19	-2.90	7.81	-6.28	10.72	-3.37
7:45:00	-2.99	-2.33	-5.06	-2.99	8.01	-6.02	11.00	-3.03
8:00:00	-2.84	-1.81	-5.02	-2.87	8.10	-5.69	10.97	-2.82
8:15:00	-1.79	-4.72	-5.65	-2.96	6.89	-5.59	9.85	-2.63
8:30:00	-0.55	-0.82	-5.49	-2.40	-0.99	-5.48	1.41	-3.08
8:45:00	-1.01	-1.98	-6.21	-1.84	-2.33	-5.49	-0.50	-3.65
9:00:00	-1.52	-1.87	-6.48	-1.54	-2.24	-5.77	-0.70	-4.23
9:15:00	1.61	-2.69	-6.65	-0.65	-2.42	-6.10	-1.76	-5.44
9:30:00	-0.04	-3.89	-5.32	-0.30	-2.25	-6.03	-1.95	-5.73
9:45:00	-2.76	-3.68	-5.49	-0.74	-2.82	-6.03	-2.08	-5.29
10:00:00	-2.09	-4.67	-5.7	-0.96	-3.36	-5.93	-2.40	-4.97
10:15:00	-2.32	-4.27	-5.8	-1.12	-3.84	-5.79	-2.72	-4.67
10:30:00	-1.82	-4.36	-5.22	-1.81	-4.17	-5.51	-2.37	-3.70
10:45:00	0.24	41.03	-5.46	-1.75	4.81	-5.53	6.56	-3.78
11:00:00	-0.98	3.23	-5.37	-1.39	6.19	-5.51	7.59	-4.12
11:15:00	-0.1	0.83	-4.65	-1.00	7.29	-5.30	8.29	-4.30
11:30:00	0.44	4.35	-4.18	-0.44	9.02	-4.98	9.46	-4.53
11:45:00	0.38	-0.59	-2.45	0.00	9.77	-4.42	9.77	-4.42
12:00:00	-0.06	-0.91	-1.64	-0.06	1.38	-3.66	1.45	-3.59
12:15:00	-0.86	1.57	-0.49	-0.04	1.05	-2.68	1.09	-2.64
12:30:00	-0.33	3.68	-3.72	-0.09	1.62	-2.50	1.71	-2.41
12:45:00	2.43	0.43	-3.41	0.31	0.84	-2.34	0.52	-2.65
13:00:00	-0.46	0.95	-4.08	0.14	1.14	-2.67	1.00	-2.81
13:15:00	-1.61	-0.44	-5.25	-0.17	1.24	-3.39	1.40	-3.22
13:30:00	1.83	-0.75	-4.2	0.37	0.77	-4.13	0.40	-4.50
13:45:00	4.31	-1.96	-5.41	1.30	-0.35	-4.47	-1.65	-5.77
14:00:00	0.22	-1.19	-6.22	0.86	-0.68	-5.03	-1.54	-5.89
14:15:00	0.73	-1.42	-6.92	1.10	-1.15	-5.60	-2.25	-6.70
14:30:00	0.58	-2.61	-7.07	1.53	-1.59	-5.96	-3.12	-7.50
14:45:00	0.29	-2.42	-7.82	1.23	-1.92	-6.69	-3.15	-7.91
15:00:00	0.17	-3.26	-7.84	0.40	-2.18	-7.17	-2.58	-7.57
15:15:00	-0.13	-3.55	-7.96	0.33	-2.65	-7.52	-2.98	-7.85
15:30:00	-0.92	-3.59	-7.73	0.00	-3.09	-7.68	-3.08	-7.68
15:45:00	-0.68	-3.53	-7.14	-0.25	-3.27	-7.70	-3.02	-7.44
16:00:00	-0.74	-3.73	-6.95	-0.46	-3.53	-7.52	-3.07	-7.06
16:15:00	-0.54	-3.59	-7.03	-0.60	-3.60	-7.36	-3.00	-6.76
16:30:00	--	-3.85	-7.21	-0.72	-3.66	-7.21	-2.94	-6.49
16:45:00	1.27	-3.53	-7.36	-0.17	-3.65	-7.14	-3.47	-6.97
17:00:00	1.29	-4.08	-6.26	0.32	-3.76	-6.96	-4.08	-7.28
17:15:00	-1.76	-4.75	-6	0.07	-3.96	-6.77	-4.03	-6.84
17:30:00	-1.31	-4.57	-5.14	-0.13	-4.16	-6.39	-4.03	-6.27
17:45:00	--	-4.32	-5.09	-0.13	-4.25	-5.97	-4.12	-5.84
18:00:00	0.88	2.95	-5.14	6.22	-2.95	-5.53	-9.17	-11.75

Thursday, May 26, 2022

Time	Turbidity (NTU)			Rolling Average Turbidity (NTU)			Difference (NTU)	
	Ambient	3rd Street	Union Street	Ambient	3rd Street	Union Street	3rd St - Ambient	Union St - Ambient
7:00:00	-2.89	-5.65	-6.19	-2.87	-5.81	-6.41	-2.94	-3.54
7:15:00	-3.49	-5.97	-6.82	-3.01	-5.86	-6.52	-2.85	-3.51
7:30:00	-2.97	-2.33	-7.11	-3.15	-5.14	-6.56	-1.99	-3.41
7:45:00	-2.38	8.08	-6.8	-3.01	-2.33	-6.70	0.67	-3.70
8:00:00	-0.69	-5.99	-6.94	-2.48	-2.37	-6.77	0.11	-4.29
8:15:00	-3.37	-5.67	-5.37	-2.58	-2.38	-6.61	0.20	-4.03
8:30:00	-3.01	-5.49	-6.27	-2.48	-2.28	-6.50	0.20	-4.01
8:45:00	-1.1	-6.08	-5.42	-2.11	-3.03	-6.16	-0.92	-4.05
9:00:00	-2.54	-5.6	-3.79	-2.14	-5.77	-5.56	-3.62	-3.42
9:15:00	-3.57	-5.67	3.56	-2.72	-5.70	-3.46	-2.98	-0.74
9:30:00	-2.66	-5.9	-2.59	-2.58	-5.75	-2.90	-3.17	-0.33
9:45:00	-3.02	-5.61	-2.33	-2.58	-5.77	-2.11	-3.19	0.46
10:00:00	-2	-5.61	--	-2.76	-5.68	-1.29	-2.92	1.47
10:15:00	-2.58	-5.92	11.88	-2.77	-5.74	2.63	-2.98	5.40
10:30:00	-0.96	-5.54	4.45	-2.24	-5.72	2.85	-3.47	5.10
10:45:00	-3.12	-5.27	3.13	-2.34	-5.59	4.28	-3.25	6.62
11:00:00	-2.81	9.47	1.14	-2.29	-2.57	5.15	-0.28	7.44
11:15:00	-3.01	12.67	0.1	-2.50	1.08	4.14	3.58	6.64
11:30:00	-2.53	13.36	5	-2.49	4.94	2.76	7.42	5.25
11:45:00	-2.57	11.78	2.69	-2.81	8.40	2.41	11.21	5.22
12:00:00	-2.58	8.07	0.94	-2.70	11.07	1.97	13.77	4.67
12:15:00	-3.55	3.21	-0.88	-2.85	9.82	1.57	12.67	4.42
12:30:00	-2.61	-0.62	-1.84	-2.77	7.16	1.18	9.93	3.95
12:45:00	-1.01	0.26	-3.9	-2.46	4.54	-0.60	7.00	1.87
13:00:00	-0.91	--	-4.4	-2.13	2.73	-2.02	4.86	0.12
13:15:00	-1.42	-2.37	-5.14	-1.90	0.12	-3.23	2.02	-1.33
13:30:00	-1.35	-1.92	-5.53	-1.46	-1.16	-4.16	0.30	-2.70
13:45:00	-1.5	-1.73	-5.64	-1.24	-1.44	-4.92	-0.20	-3.68
14:00:00	1.25	-1.64	-4.83	-0.79	-1.92	-5.11	-1.13	-4.32
14:15:00	-0.26	-3.07	-4.2	-0.66	-2.15	-5.07	-1.49	-4.41
14:30:00	-0.68	-3.17	-3.08	-0.51	-2.31	-4.66	-1.80	-4.15
14:45:00	-0.46	-3.29	-4.44	-0.33	-2.58	-4.44	-2.25	-4.11
15:00:00	0.6	-3.91	-5.25	0.09	-3.02	-4.36	-3.11	-4.45
15:15:00	-0.86	-3.62	-6.04	-0.33	-3.41	-4.60	-3.08	-4.27
15:30:00	-5.68	-3.88	-6.26	-1.42	-3.57	-5.01	-2.16	-3.60
15:45:00	--	-4.14	-6.39	-1.60	-3.77	-5.68	-2.17	-4.08
16:00:00	-1.11	-4.52	-6.01	-1.76	-4.01	-5.99	-2.25	-4.23
16:15:00	-1.01	-4.55	-5.38	-2.17	-4.14	-6.02	-1.98	-3.85
16:30:00	-1.19	-4.64	-6.25	-2.25	-4.35	-6.06	-2.10	-3.81
16:45:00	-1.15	-4.64	-6.18	-1.12	-4.50	-6.04	-3.38	-4.93
17:00:00	-1.83	-4.95	-6.6	-1.26	-4.66	-6.08	-3.40	-4.83
17:15:00	-2.16	-4.64	-6.4	-1.47	-4.68	-6.16	-3.22	-4.69
17:30:00	-2.05	-4.41	-5.72	-1.68	-4.66	-6.23	-2.98	-4.55
17:45:00	-2.32	-4.37	-5.73	-1.90	-4.60	-6.13	-2.70	-4.22
18:00:00	-2.14	-4.38	-5.71	-2.10	-4.55	-6.03	-2.45	-3.93

Friday, May 27, 2022

Time	Turbidity (NTU)			Rolling Average Turbidity (NTU)			Difference (NTU)	
	Ambient	3rd Street	Union Street	Ambient	3rd Street	Union Street	3rd St - Ambient	Union St - Ambient
7:00:00	-3.81	-6.3	-6.38	-3.98	-5.88	-6.80	-1.90	-2.81
7:15:00	-3.4	-6.33	-6.32	-3.89	-5.91	-6.65	-2.02	-2.76
7:30:00	1.5	-6.48	1.14	-2.79	-6.42	-4.93	-3.62	-2.14
7:45:00	--	-6.52	-4.89	-2.52	-6.43	-4.59	-3.92	-2.07
8:00:00	-3.85	-6.29	-3.81	-2.39	-6.38	-4.05	-3.99	-1.66
8:15:00	-4.13	-6.36	-5.03	-2.47	-6.40	-3.78	-3.93	-1.31
8:30:00	-3.74	-6.3	-5.45	-2.56	-6.39	-3.61	-3.84	-1.05
8:45:00	-4.07	-6.07	-1.83	-3.95	-6.31	-4.20	-2.36	-0.25
9:00:00	-4.21	-6.36	7.45	-4.00	-6.28	-1.73	-2.28	2.27
9:15:00	-4.16	-6.11	--	-4.06	-6.24	-1.22	-2.18	2.85
9:30:00	-4.04	-6.61	-2.76	-4.04	-6.29	-0.65	-2.25	3.40
9:45:00	-3.84	-6.09	-4.71	7.50	-6.25	-0.46	-13.75	-7.96
10:00:00	-3.7	-5.87	-6.35	-3.99	-6.21	-1.59	-2.22	2.40
10:15:00	-3.71	-6.37	-5.77	-3.89	-6.21	-4.90	-2.32	-1.01
10:30:00	-3.7	-5.58	-5.95	-3.80	-6.10	-5.11	-2.31	-1.31
10:45:00	--	-6.77	-6.28	-3.74	-6.14	-5.81	-2.40	-2.07
11:00:00	--	-6.29	-5.93	-3.70	-6.18	-6.06	-2.47	-2.35
11:15:00	--	-6.39	-4.04	-3.71	-6.28	-5.59	-2.58	-1.89
11:30:00	-3.21	-5.79	-4.98	-3.46	-6.16	-5.44	-2.71	-1.98
11:45:00	-5.79	-6.57	-4.55	-4.50	-6.36	-5.16	-1.86	-0.66
12:00:00	-6.19	-6.1	-2.76	-5.06	-6.23	-4.45	-1.16	0.61
12:15:00	-4.08	-5.96	44.77	-4.82	-6.16	5.69	-1.34	10.51
12:30:00	-4.12	-5.27	7.13	-4.68	-5.94	7.92	-1.26	12.60
12:45:00	-4.21	-4.1	4.88	-4.88	-5.60	9.89	-0.72	14.77
13:00:00	-3.85	-4.86	-0.93	-4.49	-5.26	10.62	-0.77	15.11
13:15:00	-3.92	-4.15	-3.1	-4.04	-4.87	10.55	-0.83	14.59
13:30:00	-3.03	-4.63	-5.07	-3.83	-4.60	0.58	-0.78	4.41
13:45:00	-3.08	-1.43	-6	-3.62	-3.83	-2.04	-0.22	1.57
14:00:00	-2.9	-1.46	-6.54	7.10	-3.31	-4.33	-10.41	-11.43
14:15:00	-3.17	-4.13	-7.01	7.90	-3.16	-5.54	-11.06	-13.44
14:30:00	-3.53	-0.8	-7.06	-3.14	-2.49	-6.34	0.65	-3.19
14:45:00	-3.34	-2.48	-7.5	-3.20	-2.06	-6.82	1.14	-3.62
15:00:00	-2.94	-2.66	-7.39	-3.18	-2.31	-7.10	0.87	-3.92
15:15:00	-2.01	-3.3	-7.71	-3.00	-2.67	-7.33	0.32	-4.34
15:30:00	-0.57	-3.16	-7.69	-2.48	-2.48	-7.47	0.00	-4.99
15:45:00	-0.01	-3.91	-7.83	-1.77	-3.10	-7.62	-1.33	-5.85
16:00:00	0.61	-3.79	-7.56	-0.98	-3.36	-7.64	-2.38	-6.65
16:15:00	-1.15	-4.06	-7.84	-0.63	-3.64	-7.73	-3.02	-7.10
16:30:00	-0.72	-4.33	-7.72	-0.37	-3.85	-7.73	-3.48	-7.36
16:45:00	-2.57	-4.7	-7.59	-0.77	-4.16	-7.71	-3.39	-6.94
17:00:00	-1.96	-3.42	-7.34	-1.16	-4.06	-7.61	-2.90	-6.45
17:15:00	-2.11	-4.75	-7.08	-1.70	-4.25	-7.51	-2.55	-5.81
17:30:00	-2.36	-4.08	-7.41	-1.94	-4.26	-7.43	-2.31	-5.48
17:45:00	-2.37	#VALUE!	-7.36	-2.27	--	-7.36	--	-5.08
18:00:00	-2.71	#VALUE!	-6.53	-2.30	--	-7.14	--	-4.84