

**GOWANUS CANAL SUPERFUND SITE  
RTA1 REMEDIAL CONSTRUCTION  
Water Quality Monitoring Weekly Data Summary**

**PERIOD: September 25 – September 29, 2023**

**Date of Report: October 3, 2023**

## **Report Contents**

- Scope of Monitoring
- Report of Exceedances
- Turbidity Buoy Data
- Dissolved Oxygen Monitoring Data
- Summary of Visual Observations

*Prepared by*

**B&B Engineers & Geologists**   
of new york, p.c.

*an affiliate of Geosyntec Consultants*

1255 Roberts Blvd, Suite 200  
Kennesaw, GA 30144  
Project Number JR0289A

## **1. SCOPE OF MONITORING**

### **1.1 Initial Buoy Locations**

In accordance with the Water Quality Monitoring Plan for In-waterway Construction Activities (WQMP) three turbidity buoys were deployed to monitor turbidity related to dredging activities. One turbidity buoy was deployed just south of the 3<sup>rd</sup> Street Bridge outside of the air curtain and traditional turbidity curtain and was referred to as the 3<sup>rd</sup> Street Sentinel Buoy. A second turbidity buoy was deployed just south of Carroll St Bridge to monitor dredging activities north of Carroll Street Bridge and was referred to as the Carroll Street Sentinel Buoy. The third turbidity buoy was deployed in the Fourth Street Turning Basin (TB4) in order to monitor background turbidity unaffected by in-water construction activities and was referred to as the Ambient Buoy.

Each turbidity buoy was equipped with a YSI EXO3 water quality meter with optical turbidity sensor. The buoys were field calibrated and programmed such that readings were collected every 15 minutes. After each measurement, the turbidity data were transmitted to a File Transfer Portal (FTP) site via telemetry.

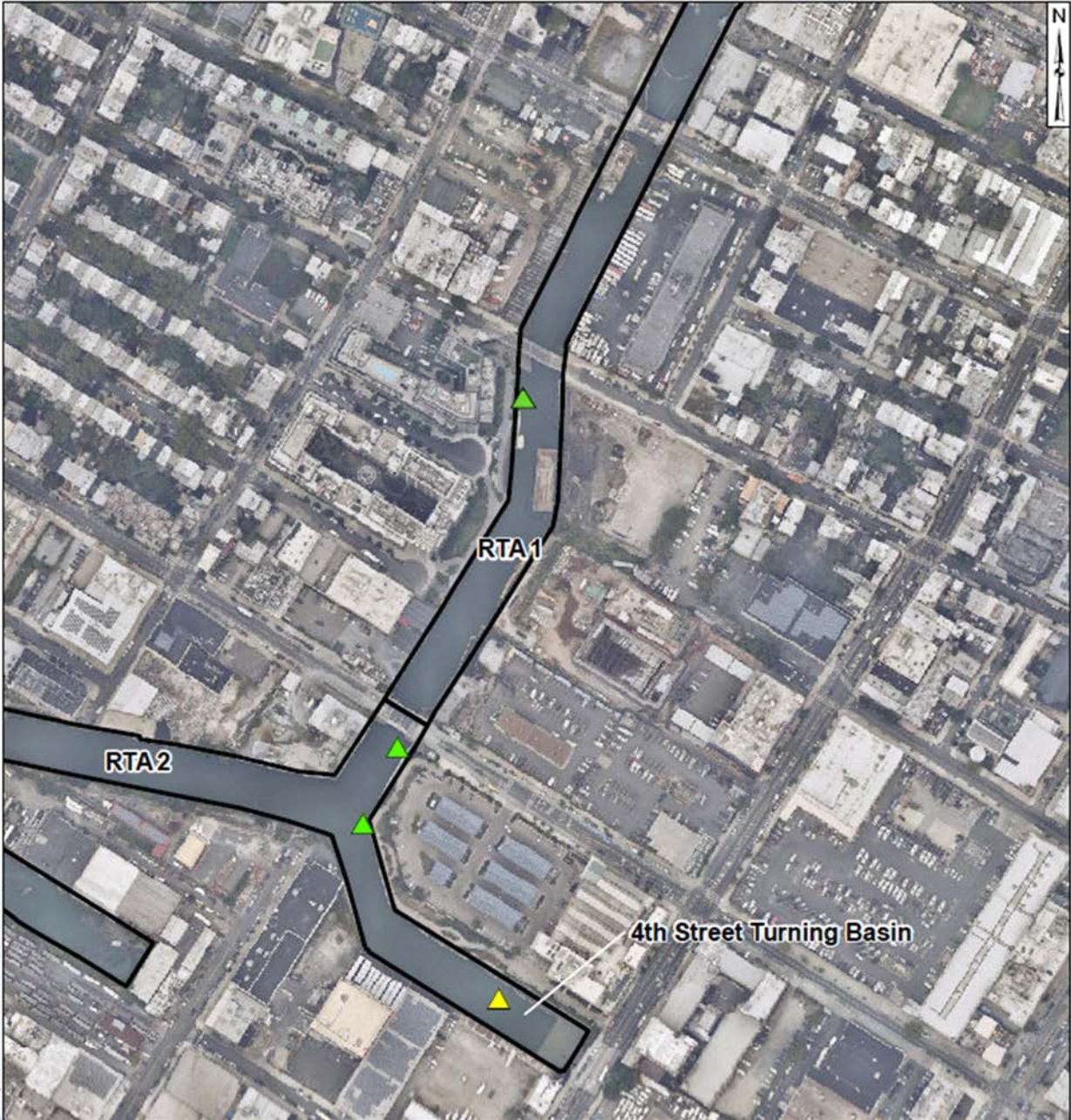
### **1.2 Summary of Monitoring Adjustments during Construction**

- On January 22, 2021, prior to dredging north of the Union Street Bridge, a fourth turbidity buoy was deployed just south of the Union Street Bridge and was referred to as the Union Street Sentinel Buoy. This fourth turbidity buoy was removed prior to the start of pipe pile installation.
- On Wednesday, September 22, 2021, the Carroll Street Sentinel Buoy was relocated to the west side of the canal where Degraw Street intersects the canal to monitor cofferdam removal activities conducted in the vicinity of the Flushing Tunnel. This buoy was renamed the Degraw Street Sentinel Buoy during cofferdam removal activities.
- On October 14, 2021, the Degraw Street Sentinel Buoy was removed from the canal for servicing. On October 20, 2021, the Degraw Street Sentinel Buoy was redeployed to its position south of the Carroll Street Bridge and was renamed to the Carroll Street Sentinel Buoy.
- On November 15, 2021, the Carroll Street Sentinel Buoy was moved to the Union Street Bridge and renamed the Union Street Sentinel Buoy. On December 3, 2021, the Union Street Buoy was removed from the canal for servicing and re-deployed at 3<sup>rd</sup> Street Bridge in preparation for the resumption of ISS operations. On December 8, 2021, a sentinel buoy was re-deployed just south of the Carroll Street Bridge.
- Since December 8, 2021, the sentinel buoy deployed at the northern-most portion of the canal has alternated positioning between the Union Street Bridge and Carroll Street Bridge locations based on the in-canal construction activities being conducted at any given time.
- On January 9, 2023, the Carroll Street Sentinel Buoy was moved to the Third Street Bridge location and renamed the Third Street Sentinel Buoy. Additionally, the former Third Street Sentinel Buoy was removed from the canal for servicing.

- On February 6, 2023, the newly serviced Third Street Sentinel Buoy was reinstalled at Third Street Bridge, and the former Carroll Street Sentinel Buoy was reinstalled at Carroll Street Bridge.
- The Ambient Buoy was removed from service on Friday, February 17, 2023, due to a faulty communications system. Following investigation into the cause of the fault and the appropriate repairs made, the Ambient Buoy was returned to service on Thursday, April 13, 2023. Due to similar issues, the Ambient Buoy was removed from service again on Monday, April 24, 2023, before being redeployed on Friday, May 12, 2023, and again removed from service on Monday, May 15, 2023, before being redeployed on Monday, June 12, 2023.
- On Thursday April 13, 2023, the Carroll Street Sentinel Buoy was assessed to be within 100ft of in-canal construction activities being conducted at Carroll Street Bridge, and consequently was repositioned to the North Third Street Sentinel Buoy location.
- Data from the Third Street Sentinel Buoy was not reported from Thursday June 1, 2023 to June 2, 2023 due to a power failure and/or faulty communications system preventing transmission of readings. The Third Street Sentinel Buoy was returned to service with data collection resuming on June 5, 2023.
- On Wednesday, July 26, 2023, a fourth monitoring buoy was deployed just north of the Union Street Bridge to monitor dissolved oxygen (DO) in RTA1.
- On Tuesday, September 19, 2023, the fourth monitoring buoy (originally deployed north of the Union Street Bridge to monitor DO) was moved to just south of the Carroll Street Bridge due to ongoing in-waterway construction activities within 100 feet. In addition to dissolved oxygen, this will now serve as an additional sentinel buoy and hereafter be referred to as the South Carroll Street Bridge Sentinel Buoy.

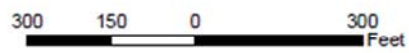
### **1.3 Current Reporting Period Scope of Monitoring**

For the week of September 25, 2023, four turbidity buoys were deployed consisting of the Ambient Turbidity Buoy located in the eastern end of TB4, the West TB4 Sentinel Buoy located just outside of any sediment and floatables controls at the southern end of RTA1, the South Third Street Sentinel Buoy located just south of the Third Street Bridge, and the South Carroll Street Bridge Sentinel Buoy located just south of the Carroll Street Bridge. Additionally, DO measurements were recorded by the turbidity buoys. All readings from buoys were transmitted via telemetry at 15-minute intervals. The instrument used to collect DO from the buoys is an In-Situ AquaTroll500 equipped with an optical Rugged Dissolved Oxygen (RDO) Sensor capable of reading DO levels with an accuracy of +/-0.1 mg/L. Visual observations of turbidity and sheen are summarized in Section 4.



\\fileserver-ng\Gowanus-PRJ\03\_GIS\mxd\Canal\_Width\Turbidity\_Buoy\_Locations.mxd: akufman, 11/23/2020

- Legend**
- ▲ Ambient Buoy
  - ▲ Sentinel Buoy
  - RTA Boundary



**Water Quality Monitoring  
Buoy Locations**

Gowanus Canal, Brooklyn, NY

B&B Engineers & Geologists  
of new york, p.c.  
*an affiliate of Geosyntec Consultants*

Brooklyn, NY

September 2023

Figure  
**1**

## 2. REPORT OF EXCEEDANCES

No exceedances of the trigger or action criteria occurred during the reporting period. However, elevated turbidity readings were detected throughout the monitoring network as a result of heavy rainfall and turbid discharges from CSOs, Salt Lot cofferdam, and the high level storm outfall adjacent to the Carroll Street Bridge during the reporting period.

- **Trigger criterion** – Any of the following:
  - The rolling average of the relevant sentinel buoy turbidity measurements over a one-hour period exceeds the rolling average of the ambient buoy turbidity measurements by 20 NTU excluding any eliminated outlier measurements and in-waterway construction activities cannot be immediately excluded as the source following consultation with EPA; or
  - Either an oil sheen or a turbidity plume is visually observed at the relevant sentinel buoy and in-waterway construction activities are readily identified as the source.
- **Action criterion** – Any of the following:
  - The rolling average of the turbidity measurements of the sentinel buoy outside of RTA1 over a one-hour period exceeds the rolling average of the ambient buoy turbidity measurements by 40 NTU excluding any eliminated outlier measurements and in-waterway construction activities cannot be immediately excluded as the source following consultation with EPA; or
  - Either an oil sheen or a turbidity plume is visually observed outside of RTA1 and any deployed engineering controls and in-waterway construction activities are readily identified as the source.

An outlier is defined as a reading that is outside the range of 50 to 200 percent of the average of the three previous readings. In addition, to be considered an outlier, the subsequent reading must return to a range of 75 to 133 percent of the average of the three readings preceding the outlier.

### 2.1 Response to Criteria Exceedances

The trigger level criterion serves to provide early notification to the contractor of construction activities that may lead to an exceedance of the action level criterion. In the event of an exceedance to the trigger criterion, the contractor will not be stopped, and the contractor will be directed to investigate the source of the exceedance and evaluate Best Management Practices (BMPs). In the event of an exceedance to the action level criterion, in-waterway construction activities may be slowed or temporarily suspended as necessary while the contractor investigates the source of the exceedance and appropriate mitigation and corrective measures are determined. A more detailed description of responses to exceedances of the trigger and action level criteria is provided in Section 4.2 of the WQMP.



### 3. TURBIDITY BUOY DATA

The following section provides turbidity data for the sentinel and ambient turbidity buoys from 7 AM to 6 PM from September 25 – September 29, 2023.

No exceedances of the trigger or action criteria occurred during the reporting period. However, elevated turbidity readings were detected throughout the monitoring network as a result of heavy rainfall and turbid discharges from CSOs, Salt Lot cofferdam, and the high-level storm outfall adjacent to the Carroll Street Bridge during the reporting period. These occurrences are documented in more detail in the notes of the figures below.

Additionally, based on an inspection of the turbidity buoys on Wednesday, September 27, 2023, all turbidity meters were found with deposits of fine-grained sediments in and around the turbidity sensors, which may have resulted in artificially elevated turbidity readings at all buoys on Monday, Tuesday, and Wednesday morning of the reporting period. All sensors were cleaned upon inspection.

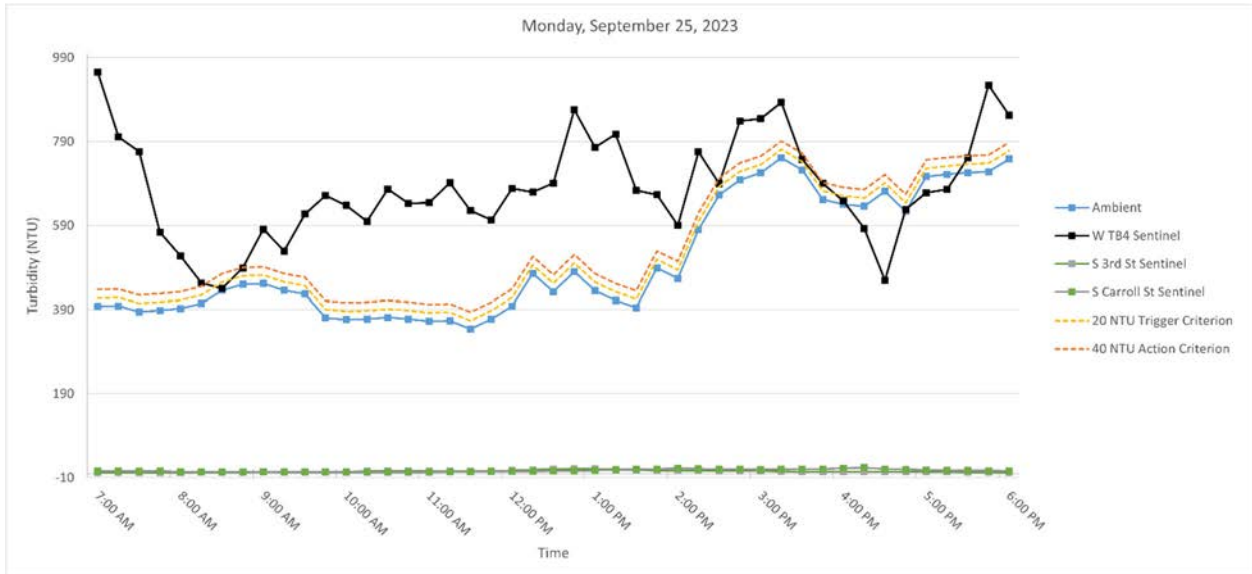
**Table 1** below provides a summary of the turbidity data for the reporting period.

Date	Average Rolling Average Difference (NTU)			Maximum Rolling Average Difference (NTU)		
	W TB4 - Ambient	S 3rd St - Ambient	S Carroll St - Ambient	W TB4 - Ambient	S 3rd St - Ambient	S Carroll St - Ambient
Monday, September 25, 2023	173.02	-501.01	-499.38	557.66	-338.97	-339.45
Tuesday, September 19, 2023	80.08	-325.28	-308.70	296.55	-222.74	-183.44
Wednesday, September 27, 2023	-35.34	-111.97	-83.66	31.63	19.68	50.69
Thursday, September 28, 2023	-3.61	-6.25	9.76	3.60	-2.22	26.57
Friday, September 29, 2023	-5.06	-8.12	-5.33	45.48	50.50	42.43

**Table 1.** Daily average and maximum differences between the rolling average turbidity readings from RTA1 sentinel buoys and the ambient buoy between 7 AM and 6 PM.

### 3.1 Monday, September 25, 2023

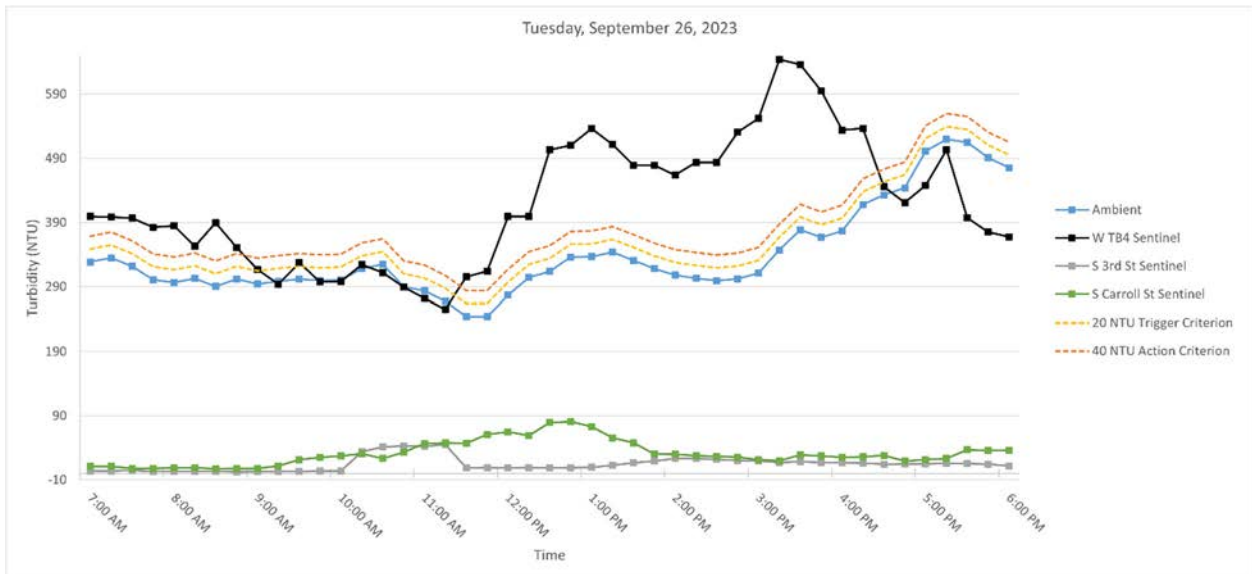
**Figure 3.** Hourly rolling average turbidity readings on Monday, September 25, 2023, from 7 AM to 6 PM.



**Note:** Elevated turbidity readings were detected at the West TB4 Sentinel Buoy and Ambient Buoy due to heavy rainfall and ongoing discharges from the Salt Lot cofferdam, resulting in deposits of fine-grained sediments in and around the turbidity meters. Outlier turbidity readings above 20 NTU were detected at the South 3<sup>rd</sup> Street Sentinel Buoy and the South Carroll Street Sentinel Buoy.

### 3.2 Tuesday, September 26, 2023

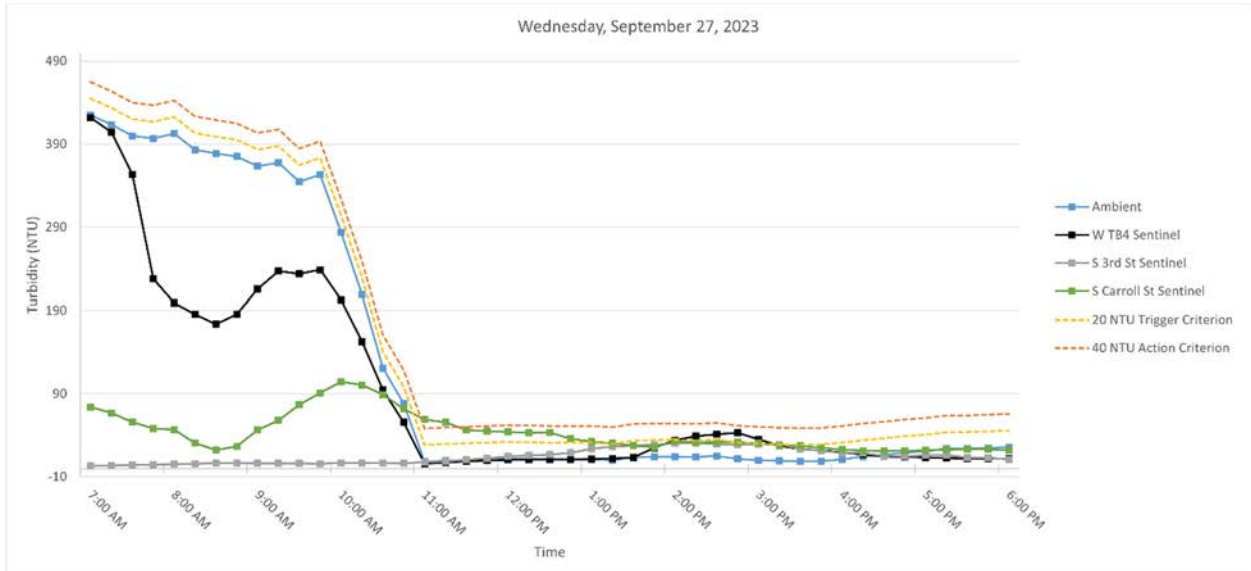
**Figure 3.** Hourly rolling average turbidity readings on Tuesday, September 26, 2023, from 7 AM to 6 PM.



**Note:** Elevated turbidity readings were detected at the West TB4 Sentinel Buoy and Ambient Buoy due to heavy rainfall and ongoing discharges from the Salt Lot cofferdam, resulting in deposits of fine-grained sediments in and around the turbidity meters.. Outlier turbidity readings above 20 NTU were detected at the South 3<sup>rd</sup> Street Sentinel Buoy, West TB4 Sentinel Buoy, and the South Carroll Street Sentinel Buoy.

### 3.3 Wednesday, September 27, 2023

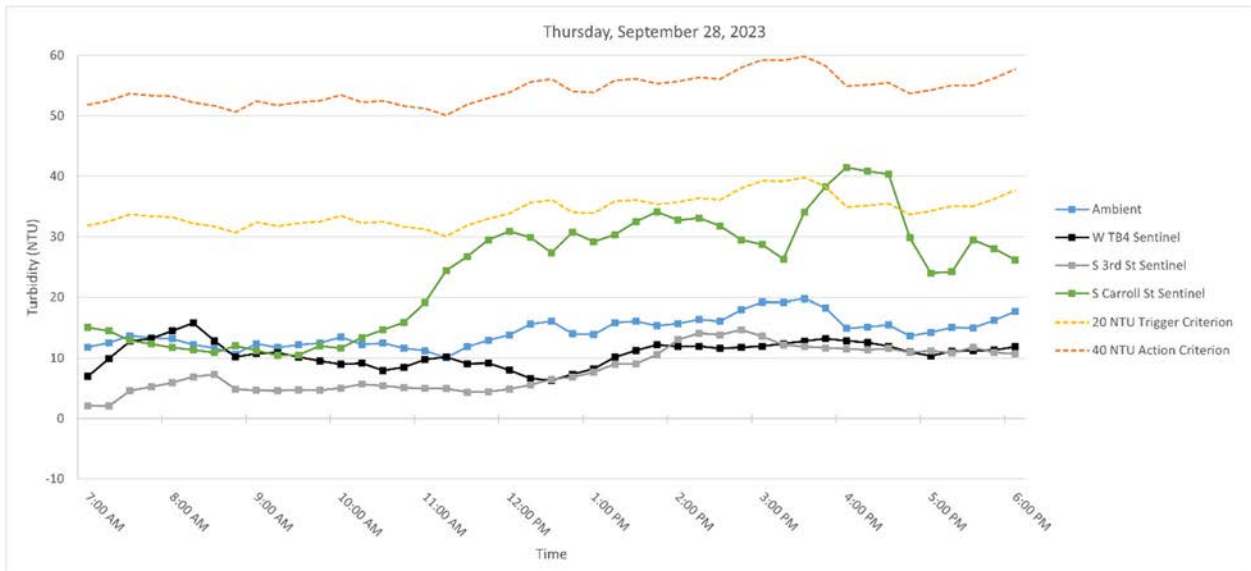
**Figure 4.** Hourly rolling average turbidity readings on Wednesday, September 27, 2023, from 7 AM to 6 PM.



**Note:** Elevated turbidity readings were detected at the West TB4 Sentinel Buoy, South Carroll Street Sentinel Buoy, and Ambient Buoy due to heavy rainfall and ongoing discharges from the Salt Lot cofferdam, resulting in deposits of fine-grained sediments in and around the turbidity meters. All turbidity meters were cleaned at approximately 10:30 AM. Outlier turbidity readings above 20 NTU were detected at the South 3<sup>rd</sup> Street Sentinel Buoy, West TB4 Sentinel Buoy, and the South Carroll Street Sentinel Buoy.

### 3.4 Thursday, September 28, 2023

**Figure 5.** Hourly rolling average turbidity readings on Thursday, September 28, 2023, from 7 AM to 6 PM.

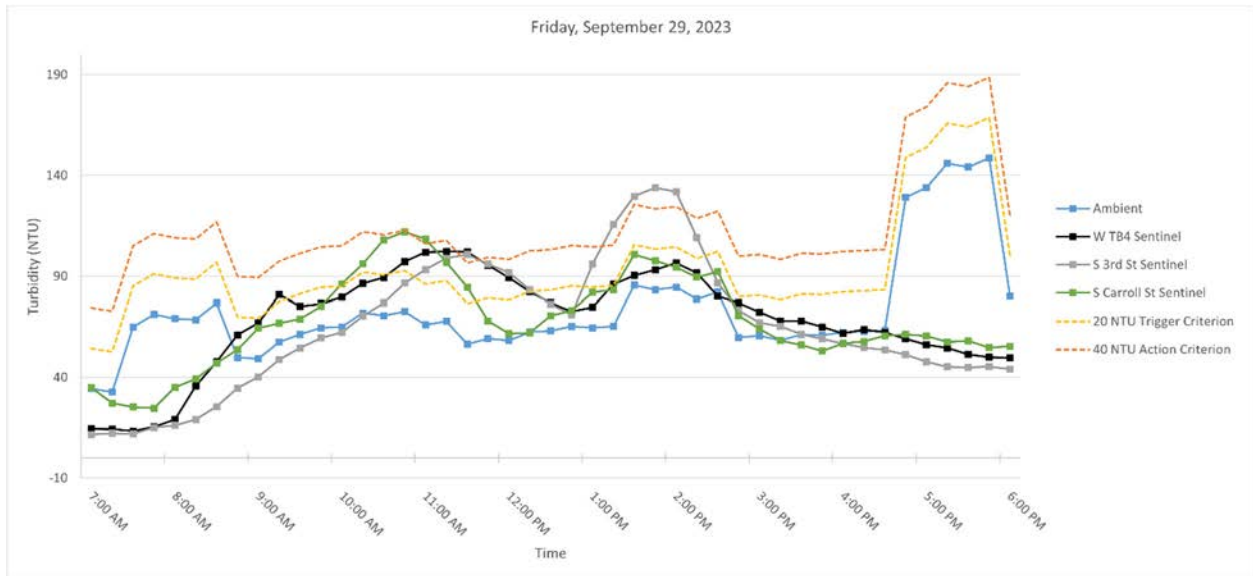


**Note:** Elevated turbidity readings were detected at the South Carroll Street Sentinel Buoy due to a rain event. Outlier turbidity readings above 20 NTU were detected at the Ambient Buoy and the South Carroll Street Sentinel Buoy.



### 3.5 Friday, September 29, 2023

**Figure 6.** Hourly rolling average turbidity readings on Friday, September 29, 2023, from 7 AM to 6 PM.



**Note:** Elevated turbidity readings were detected at all the sentinel buoys due to heavy rainfall and ongoing discharges from the Salt Lot cofferdam and the high-level storm sewer pipe adjacent to OH-005. Outlier turbidity readings above 20 NTU were detected at the Ambient Buoy and the South Carroll Street Sentinel Buoy.

#### 4. DISSOLVED OXYGEN MONITORING DATA

Dissolved oxygen measured at the monitoring buoys throughout the reporting period is provided in Appendix B and summarized below:

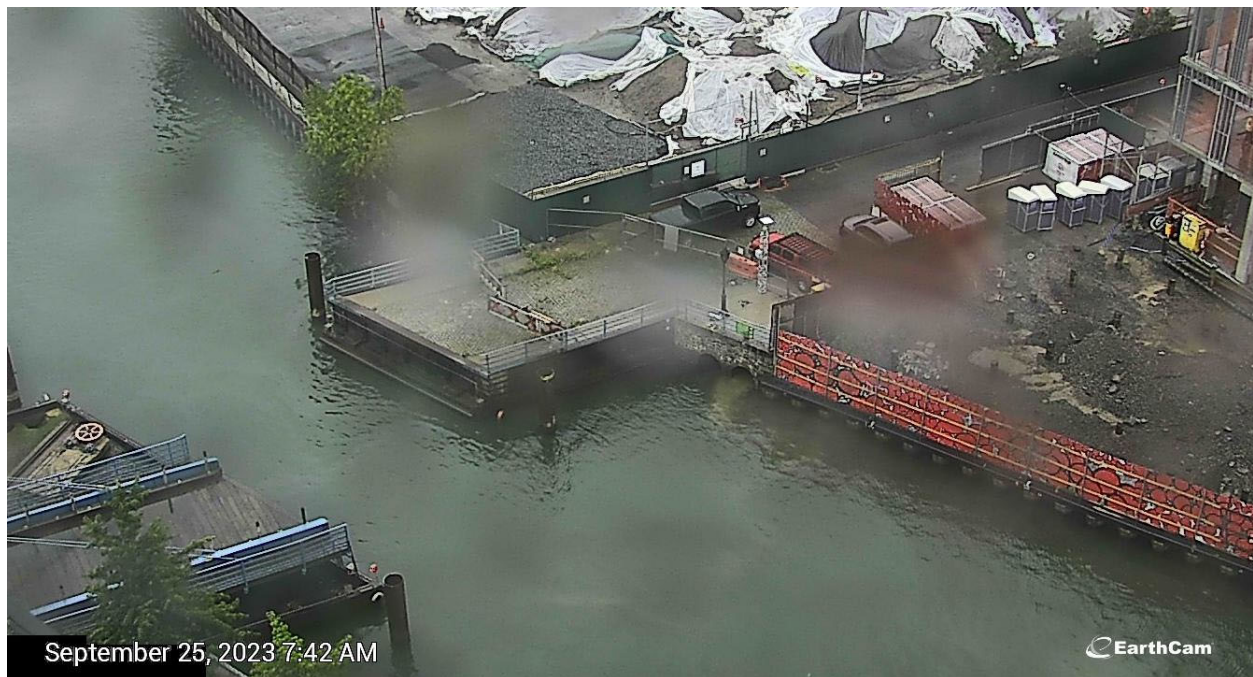
- Ambient
  - Average = 2.72 (+/-0.1) mg/L
  - Min = 0.13 (+/-0.1) mg/L on Monday September 25, 2023
  - Max = 9.18 (+/-0.1) mg/L on Friday September 29, 2023
  
- West Turning Basin 4 (W TB4)
  - Average = 1.98 (+/-0.1) mg/L
  - Min = < 0.1 mg/L at multiple times throughout the reporting period
  - Max = 6.48 (+/-0.1) mg/L on Friday September 29, 2023
  
- South Third Street Bridge (S 3SB)
  - Average = 3.17 (+/-0.1) mg/L
  - Min = 0.49 (+/-0.1) mg/L on Wednesday September 27, 2023
  - Max = 9.57 (+/-0.1) mg/L on Friday September 29, 2023
  
- South Carroll Street Bridge (S CSB)
  - Average = 2.70 (+/-0.1) mg/L
  - Min = 0.10 (+/-0.1) mg/L on Tuesday September 26, 2023
  - Max = 9.88 (+/-0.1) mg/L on Friday September 29, 2023

## SUMMARY OF VISUAL OBSERVATIONS

Visual indications of elevated turbidity were periodically observed during the reporting period attributable to capping activities. No sheens attributable to in-canal work operations were observed above background conditions. Turbid discharges were observed during the reporting period from the Salt Lot cofferdam and storm water outfalls, including from the high-level storm sewer pipe adjacent to OH-005 and the outfall opposite Douglass Street.

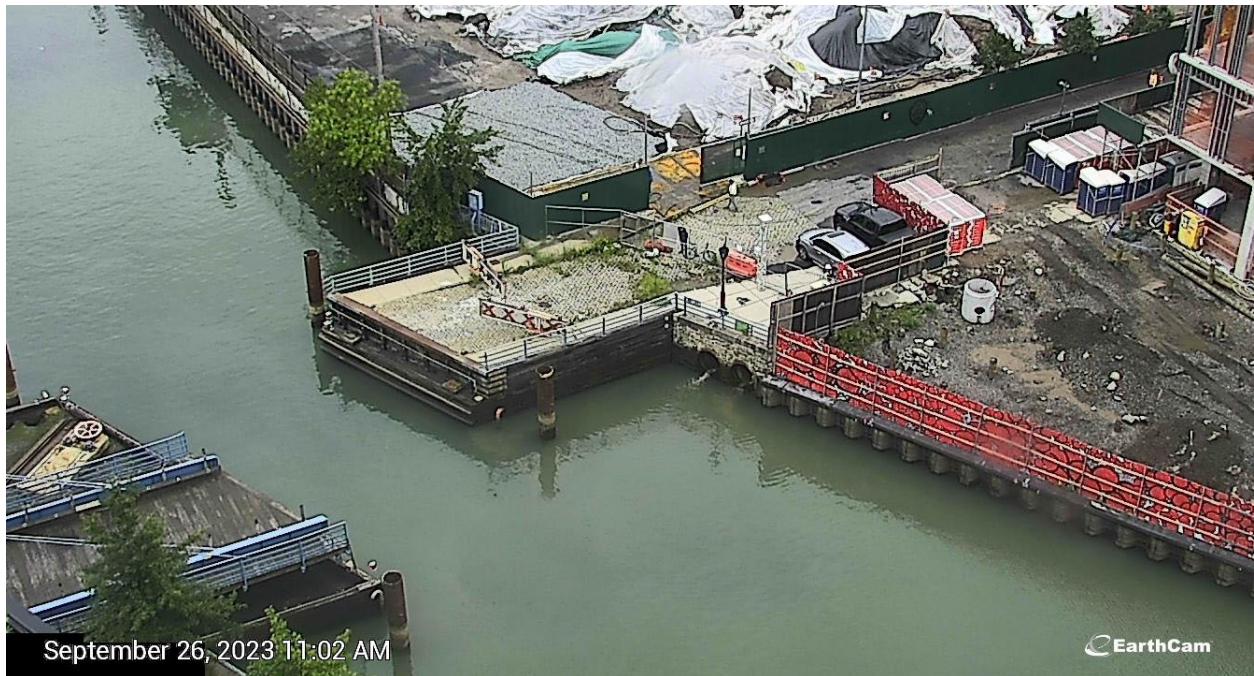
On Friday, September 29, 2023, flooding of upland properties during a sustained heavy rain event led to observations of significant construction debris flowing into the Canal from multiple upland development sites along the Canal's edge. All equipment/materials on vessels/barges and at the Smith Street staging site were secured and are not considered the source of any of this observed debris.

Photographs depicting conditions relevant to these events are shown below.

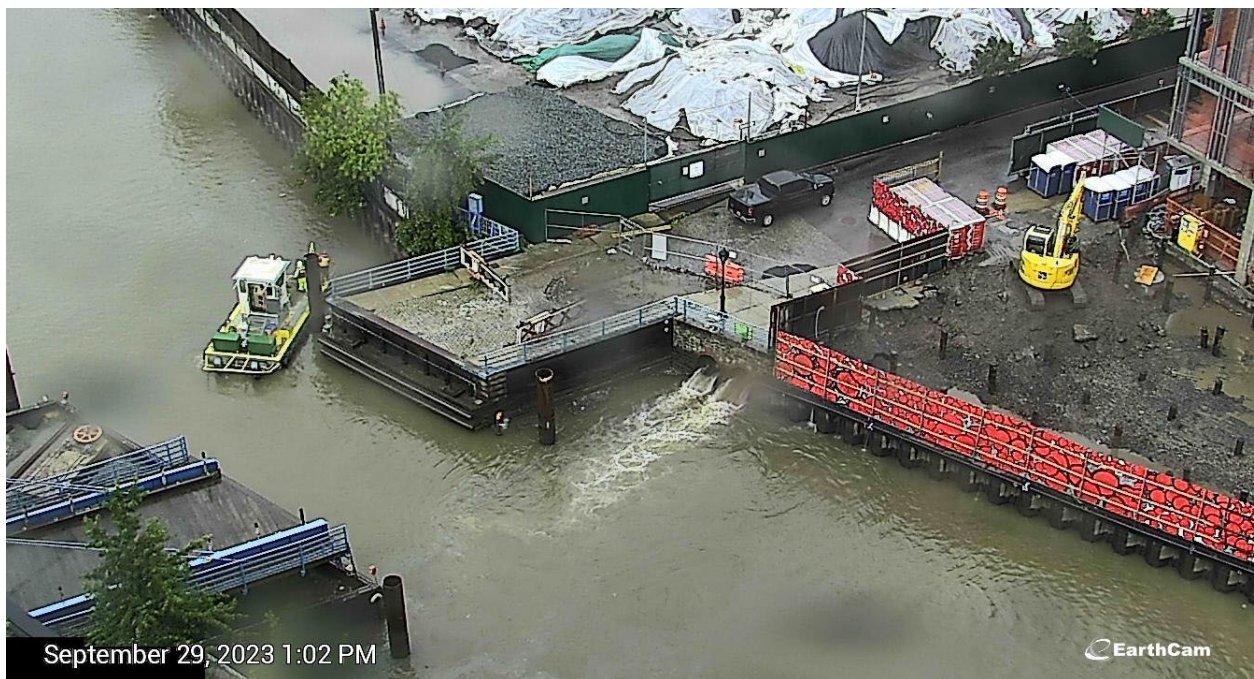


**Figure 7.** Turbid discharge from high level storm sewer pipe OH-005 on September 25, 2023 at 7:45 AM.





**Figure 8.** Turbid discharge from high level storm sewer pipe OH-005 on September 26, 2023 at 11:00 AM.



**Figure 9.** Turbid discharge from high level storm sewer pipe OH-005 on September 29, 2023 at 1:00 PM.





**Figure 10.** Turbid discharge from the Salt Lot cofferdam on September 29, 2023 at 12:00 PM.



**Figure 11.** Turbid discharge from the Salt Lot cofferdam on September 25, 2023 at 10:45 AM.





**Figure 12.** Turbid discharge from the outfall opposite Douglass Street on September 28, 2023 at 10:30 AM.

**APPENDIX A**  
**Turbidity Data Tables**

## Monday, September 25, 2023

Time	Turbidity (NTU)				Rolling Average Turbidity (NTU)				Difference (NTU)		
	Ambient	W TB4	S 3rd Street	S Carroll Street	Ambient	W TB4	S 3rd Street	S Carroll Street	W TB4 - Ambient	S 3SB - Ambient	S CSB - Ambient
7:00:00	342.92	640.09	2.12	4.38	397.56	955.22	2.18	6.08	557.66	-395.38	-391.47
7:15:00	417.86	752.09	--	3.80	398.84	800.94	2.23	5.56	402.10	-396.61	-393.28
7:30:00	333.78	254.90	2.33	2.76	384.78	765.80	2.05	5.14	381.02	-382.73	-379.64
7:45:00	414.44	180.65	2.12	3.44	387.93	574.18	2.03	5.83	186.24	-385.91	-382.10
8:00:00	454.68	758.86	3.68	4.94	392.74	517.32	2.56	3.86	124.58	-390.17	-388.87
8:15:00	402.81	318.72	4.31	3.78	404.71	453.04	3.11	3.75	48.33	-401.61	-400.97
8:30:00	570.78	684.28	3.09	2.54	435.30	439.48	3.10	3.49	4.18	-432.19	-431.81
8:45:00	405.96	502.28	3.39	2.81	449.74	488.96	3.32	3.50	39.22	-446.42	-446.24
9:00:00	424.62	641.16	3.77	3.94	451.77	581.06	3.65	3.60	129.29	-448.13	-448.17
9:15:00	373.59	497.01	4.31	2.63	435.55	528.69	3.77	3.14	93.14	-431.78	-432.41
9:30:00	358.03	762.12	4.67	4.07	426.60	617.37	3.85	3.20	190.77	-422.75	-423.40
9:45:00	291.68	902.27	6.00	2.98	370.78	660.97	4.43	3.28	290.19	-366.35	-367.49
10:00:00	383.88	385.53	4.91	3.06	366.36	637.62	4.73	3.34	271.26	-361.63	-363.03
10:15:00	431.42	452.40	6.28	2.60	367.72	599.87	5.23	3.07	232.14	-362.49	-364.66
10:30:00	393.23	879.56	7.56	3.43	371.65	676.38	5.88	3.23	304.72	-365.77	-368.42
10:45:00	339.94	591.11	4.44	3.35	368.03	642.17	5.84	3.08	274.14	-362.20	-364.95
11:00:00	264.43	913.67	4.17	4.18	362.58	644.45	5.47	3.32	281.87	-357.11	-359.26
11:15:00	390.92	621.05	4.73	6.41	363.99	691.56	5.44	3.99	327.57	-358.55	-360.00
11:30:00	331.80	122.68	4.59	5.68	344.06	625.61	5.10	4.61	281.55	-338.97	-339.45
11:45:00	512.66	766.70	8.63	5.68	367.95	603.04	5.31	5.06	235.09	-362.64	-362.89
12:00:00	493.46	965.33	15.13	5.22	398.65	677.88	7.45	5.43	279.23	-391.20	-393.22
12:15:00	650.73	870.54	10.91	4.28	475.91	669.26	8.80	5.46	193.35	-467.12	-470.46
12:30:00	173.35	728.50	13.74	7.32	432.40	690.75	10.60	5.64	258.35	-421.80	-426.76
12:45:00	571.07	996.52	9.37	5.74	480.25	865.52	11.56	5.65	385.26	-468.70	-474.61
13:00:00	286.38	319.56	6.76	14.42	435.00	776.09	11.18	7.40	341.09	-423.82	-427.60
13:15:00	378.18	1123.30	6.36	15.94	411.94	807.68	9.43	9.54	395.74	-402.52	-402.40
13:30:00	565.14	199.97	6.16	7.43	394.83	673.57	8.48	10.17	278.74	-386.35	-384.66
13:45:00	643.41	676.20	8.65	8.66	488.84	663.11	7.46	10.44	174.27	-481.38	-478.40
14:00:00	447.19	632.81	6.80	15.21	464.06	590.37	6.95	12.33	126.30	-457.12	-451.73
14:15:00	865.55	1193.97	7.28	10.05	579.90	765.25	7.05	11.46	185.35	-572.85	-568.44
14:30:00	790.59	745.25	5.45	7.24	662.38	689.64	6.87	9.72	27.26	-655.51	-652.66
14:45:00	745.70	946.60	4.82	7.63	698.49	838.97	6.60	9.76	140.48	-691.89	-688.73
15:00:00	725.43	701.13	--	7.39	714.89	843.95	6.09	9.51	129.06	-708.81	-705.39
15:15:00	627.42	828.83	4.37	21.18	750.94	883.16	5.48	10.70	132.22	-745.46	-740.24
15:30:00	722.04	517.59	3.52	10.02	722.23	747.88	4.54	10.69	25.65	-717.70	-711.54
15:45:00	438.59	457.28	5.81	8.27	651.83	690.29	4.63	10.90	38.45	-647.20	-640.93
16:00:00	688.41	737.22	--	17.02	640.38	648.41	4.57	12.78	8.03	-635.81	-627.60
16:15:00	699.35	371.96	4.11	--	635.16	582.58	4.45	14.12	-52.58	-630.71	-621.04
16:30:00	807.81	210.11	3.71	7.08	671.24	458.83	4.29	10.60	-212.41	-666.95	-660.64
16:45:00	483.42	1364.40	3.86	5.93	623.51	628.20	4.37	9.57	4.68	-619.14	-613.94
17:00:00	852.36	656.50	2.63	5.41	706.27	668.04	3.58	8.86	-38.23	-702.69	-697.41
17:15:00	714.37	777.92	--	10.85	711.46	676.18	3.58	7.32	-35.28	-707.88	-704.15
17:30:00	721.18	745.27	2.06	8.10	715.83	750.84	3.06	7.47	35.01	-712.76	-708.36
17:45:00	818.71	1077.60	3.16	4.21	718.01	924.34	2.93	6.90	206.33	-715.08	-711.11
18:00:00	633.99	1005.33	2.80	4.49	748.12	852.52	2.66	6.61	104.40	-745.46	-741.51

## Tuesday, September 26, 2023

Time	Turbidity (NTU)				Rolling Average Turbidity (NTU)				Difference (NTU)		
	Ambient	W TB4	S 3rd Street	S Carroll Street	Ambient	W TB4	S 3rd Street	S Carroll Street	W TB4 - Ambient	S 3SB - Ambient	S CSB - Ambient
7:00:00	274.56	341.36	2.89	8.57	328.53	399.49	3.69	11.11	70.97	-324.84	-317.42
7:15:00	355.41	362.71	3.07	13.53	334.99	398.58	3.95	11.07	63.58	-331.05	-323.93
7:30:00	270.07	375.67	5.15	5.47	321.50	396.90	4.79	8.01	75.41	-316.70	-313.49
7:45:00	304.99	--	2.97	5.72	301.14	382.41	3.19	7.87	81.28	-297.95	-293.27
8:00:00	276.94	459.65	2.61	10.67	296.39	384.85	3.34	8.79	88.45	-293.06	-287.60
8:15:00	305.77	214.67	2.69	7.92	302.63	353.17	3.30	8.66	50.54	-299.34	-293.97
8:30:00	293.07	508.79	2.68	6.96	290.17	389.70	3.22	7.35	99.53	-286.95	-282.82
8:45:00	327.86	221.54	2.50	7.53	301.73	351.16	2.69	7.76	49.44	-299.04	-293.96
9:00:00	268.47	180.16	4.90	7.11	294.42	316.96	3.07	8.04	22.54	-291.35	-286.38
9:15:00	296.79	344.44	2.80	29.64	298.39	293.92	3.11	11.83	-4.47	-295.28	-286.56
9:30:00	322.35	382.77	3.91	55.42	301.71	327.54	3.36	21.33	25.83	-298.35	-280.38
9:45:00	282.63	358.51	5.41	--	299.62	297.49	3.91	24.92	-2.14	-295.72	-274.70
10:00:00	332.87	225.89	2.08	17.03	300.62	298.35	3.82	27.30	-2.27	-296.80	-273.32
10:15:00	355.88	309.39	154.30	21.45	318.10	324.20	33.70	30.88	6.10	-284.40	-287.22
10:30:00	329.36	283.41	--	0.00	324.62	311.99	41.43	23.48	-12.62	-283.19	-301.14
10:45:00	149.53	270.18	8.34	94.02	290.05	289.47	42.53	33.12	-0.58	-247.52	-256.93
11:00:00	251.04	--	5.16	99.80	283.74	272.22	42.47	46.46	-11.52	-241.27	-237.28
11:15:00	252.18	156.88	11.64	22.44	267.60	254.96	44.86	47.54	-12.63	-222.74	-220.06
11:30:00	238.31	510.42	10.23	20.10	244.09	305.22	8.84	47.27	61.14	-235.24	-196.82
11:45:00	329.72	319.07	9.85	67.22	244.16	314.14	9.04	60.71	69.98	-235.11	-183.44
12:00:00	314.88	610.84	6.34	114.91	277.23	399.30	8.64	64.89	122.08	-268.59	-212.34
12:15:00	387.95	--	8.08	69.88	304.61	399.30	9.23	58.91	94.69	-295.38	-245.70
12:30:00	298.43	572.79	10.08	125.32	313.86	503.28	8.92	79.48	189.42	-304.94	-234.38
12:45:00	349.56	537.45	10.88	25.63	336.11	510.04	9.05	80.59	173.93	-327.06	-255.52
13:00:00	332.85	424.27	12.48	30.95	336.73	536.34	9.57	73.34	199.60	-327.16	-263.40
13:15:00	349.09	--	22.89	26.05	343.58	511.50	12.88	55.57	167.93	-330.69	-288.01
13:30:00	325.30	381.64	26.93	31.02	331.05	479.04	16.65	47.79	147.99	-314.39	-283.25
13:45:00	233.58	574.18	22.94	38.18	318.08	479.38	19.22	30.37	161.31	-298.85	-287.71
14:00:00	298.74	475.93	30.88	23.89	307.91	464.01	23.22	30.02	156.09	-284.69	-277.90
14:15:00	309.30	503.71	12.73	19.15	303.20	483.86	23.27	27.66	180.66	-279.93	-275.55
14:30:00	329.95	--	16.88	20.18	299.37	483.86	22.07	26.48	184.49	-277.30	-272.89
14:45:00	339.49	569.37	17.74	--	302.21	530.80	20.23	25.35	228.58	-281.98	-276.86
15:00:00	278.22	660.18	--	22.63	311.14	552.30	19.56	21.46	241.16	-291.58	-289.68
15:15:00	479.66	842.23	20.48	17.14	347.32	643.87	16.96	19.77	296.55	-330.37	-327.55
15:30:00	465.33	472.63	17.98	55.97	378.53	636.10	18.27	28.98	257.57	-360.26	-349.55
15:45:00	270.21	429.32	11.36	13.53	366.58	594.75	16.89	27.32	228.16	-349.69	-339.26
16:00:00	390.74	265.38	16.59	16.93	376.83	533.95	16.60	25.24	157.11	-360.23	-351.59
16:15:00	483.83	673.81	13.95	26.12	417.96	536.67	16.07	25.94	118.72	-401.88	-392.02
16:30:00	555.49	387.16	13.36	--	433.12	445.66	14.65	28.14	12.54	-418.47	-404.98
16:45:00	519.99	350.37	18.51	21.48	444.05	421.21	14.75	19.52	-22.85	-429.30	-424.54
17:00:00	555.82	562.37	13.00	--	501.18	447.82	15.08	21.51	-53.36	-486.09	-479.66
17:15:00	482.05	542.65	20.15	22.19	519.44	503.27	15.79	23.26	-16.16	-503.64	-496.17
17:30:00	461.90	143.14	11.16	66.98	515.05	397.14	15.24	36.88	-117.91	-499.81	-478.17
17:45:00	433.56	276.16	10.02	31.30	490.66	374.94	14.57	35.49	-115.72	-476.09	-455.18
18:00:00	442.39	312.87	5.40	24.40	475.14	367.44	11.95	36.22	-107.71	-463.20	-438.93



## Wednesday, September 27, 2023

Time	Turbidity (NTU)				Rolling Average Turbidity (NTU)				Difference (NTU)		
	Ambient	W TB4	S 3rd Street	S Carroll Street	Ambient	W TB4	S 3rd Street	S Carroll Street	W TB4 - Ambient	S 3SB - Ambient	S CSB - Ambient
7:00:00	431.57	280.75	4.40	79.35	424.65	421.46	3.19	73.88	-3.18	-421.46	-350.77
7:15:00	341.10	233.71	3.78	66.12	413.44	404.28	3.63	66.92	-9.16	-409.82	-346.52
7:30:00	373.06	134.89	--	20.28	399.85	353.54	4.07	56.01	-46.31	-395.78	-343.84
7:45:00	439.80	134.63	5.69	21.35	396.78	228.03	4.70	48.18	-168.75	-392.08	-348.60
8:00:00	426.93	210.65	6.81	--	402.49	198.93	5.17	46.77	-203.57	-397.32	-355.72
8:15:00	334.93	214.77	6.73	15.70	383.17	185.73	5.75	30.86	-197.43	-377.41	-352.30
8:30:00	319.01	--	6.92	31.13	378.75	173.74	6.54	22.11	-205.01	-372.21	-356.63
8:45:00	353.73	182.77	5.93	37.74	374.88	185.71	6.42	26.48	-189.17	-368.46	-348.40
9:00:00	381.89	253.58	4.49	100.92	363.30	215.44	6.18	46.37	-147.85	-357.12	-316.92
9:15:00	448.10	296.75	6.65	104.01	367.53	236.97	6.15	57.90	-130.56	-361.38	-309.63
9:30:00	220.17	201.43	6.48	110.55	344.58	233.63	6.09	76.87	-110.94	-338.48	-267.71
9:45:00	362.02	258.58	6.02	102.74	353.18	238.62	5.91	91.19	-114.56	-347.27	-261.99
10:00:00	5.96	3.15	9.97	--	283.63	202.70	6.72	104.56	-80.93	-276.91	-179.07
10:15:00	7.93	3.42	5.02	84.95	208.84	152.66	6.83	100.56	-56.17	-202.01	-108.27
10:30:00	7.39	6.24	5.23	57.82	120.69	94.56	6.54	89.02	-26.13	-114.15	-31.68
10:45:00	9.62	5.98	4.23	43.11	78.58	55.47	6.09	72.16	-23.11	-72.49	-6.43
11:00:00	10.22	9.97	15.22	49.78	8.22	5.75	7.93	58.92	-2.47	0.29	50.69
11:15:00	12.84	10.09	13.48	42.75	9.60	7.14	8.64	55.68	-2.46	-0.96	46.09
11:30:00	11.15	11.82	14.40	38.38	10.24	8.82	10.51	46.37	-1.42	0.27	36.13
11:45:00	11.94	--	14.83	50.85	11.15	9.46	12.43	44.97	-1.69	1.28	33.82
12:00:00	14.74	10.84	15.95	38.93	12.18	10.68	14.77	44.14	-1.50	2.60	31.96
12:15:00	8.43	10.14	20.67	43.72	11.82	10.72	15.86	42.92	-1.10	4.04	31.10
12:30:00	9.62	10.82	17.11	45.44	11.18	10.91	16.59	43.46	-0.27	5.41	32.28
12:45:00	11.94	12.00	25.26	0.00	11.34	10.95	18.76	35.79	-0.38	7.43	24.45
13:00:00	11.46	12.59	39.82	33.52	11.24	11.28	23.76	32.32	0.04	12.52	21.08
13:15:00	7.83	14.44	27.89	29.37	9.86	12.00	26.15	30.41	2.14	16.29	20.55
13:30:00	26.19	16.16	28.43	29.40	13.41	13.20	27.70	27.55	-0.20	14.29	14.14
13:45:00	14.27	69.19	22.37	35.53	14.34	24.88	28.75	25.56	10.54	14.41	11.23
14:00:00	12.06	58.31	32.67	35.56	14.36	34.14	30.23	32.68	19.77	15.87	18.31
14:15:00	9.22	36.86	43.09	25.21	13.92	38.99	30.89	31.01	25.08	16.97	17.10
14:30:00	12.66	25.66	20.47	33.38	14.88	41.24	29.40	31.81	26.35	14.52	16.93
14:45:00	9.16	25.49	25.43	28.53	11.47	43.10	28.81	31.64	31.63	17.33	20.17
15:00:00	6.96	29.07	25.22	29.75	10.01	35.08	29.37	30.49	25.07	19.36	20.47
15:15:00	7.90	20.13	30.10	22.34	9.18	27.44	28.86	27.84	18.26	19.68	18.66
15:30:00	6.96	18.07	16.85	22.99	8.73	23.68	23.61	27.40	14.96	14.89	18.67
15:45:00	13.72	16.72	10.59	21.23	8.94	21.90	21.64	24.97	12.96	12.70	16.03
16:00:00	19.90	13.73	11.14	18.88	11.09	19.54	18.78	23.04	8.45	7.69	11.95
16:15:00	22.95	14.28	24.94	21.28	14.29	16.59	18.72	21.34	2.30	4.44	7.06
16:30:00	18.82	11.30	11.25	20.23	16.47	14.82	14.95	20.92	-1.65	-1.52	4.45
16:45:00	19.80	14.36	15.61	25.15	19.04	14.08	14.70	21.36	-4.96	-4.33	2.32
17:00:00	22.50	12.24	17.21	23.85	20.79	13.18	16.03	21.88	-7.61	-4.76	1.09
17:15:00	34.68	10.66	12.32	23.48	23.75	12.57	16.27	22.80	-11.18	-7.48	-0.95
17:30:00	24.02	11.62	10.29	22.84	23.96	12.04	13.34	23.11	-11.93	-10.62	-0.85
17:45:00	22.44	10.83	10.03	21.01	24.68	11.94	13.09	23.27	-12.74	-11.59	-1.42
18:00:00	24.85	15.27	5.24	18.30	25.70	12.12	11.02	21.89	-13.57	-14.68	-3.80



## Thursday, September 28, 2023

Time	Turbidity (NTU)				Rolling Average Turbidity (NTU)				Difference (NTU)		
	Ambient	W TB4	S 3rd Street	S Carroll Street	Ambient	W TB4	S 3rd Street	S Carroll Street	W TB4 - Ambient	S 35B - Ambient	S CSB - Ambient
7:00:00	13.99	5.77	0.00	14.66	11.84	6.97	2.13	15.05	-4.87	-9.71	3.21
7:15:00	13.03	23.53	3.96	10.32	12.54	9.91	2.06	14.48	-2.63	-10.48	1.94
7:30:00	15.53	21.66	15.42	10.14	13.69	12.82	4.64	12.93	-0.87	-9.05	-0.77
7:45:00	10.29	8.84	4.94	11.06	13.39	13.22	5.22	12.37	-0.16	-8.16	-1.02
8:00:00	--	12.69	5.36	12.51	13.21	14.50	5.93	11.74	1.29	-7.27	-1.47
8:15:00	9.95	12.26	5.00	12.80	12.20	15.80	6.93	11.37	3.60	-5.26	-0.83
8:30:00	10.96	8.93	5.81	8.04	11.68	12.88	7.30	10.91	1.19	-4.38	-0.77
8:45:00	11.41	8.22	3.25	15.67	10.65	10.19	4.87	12.02	-0.47	-5.78	1.36
9:00:00	17.30	11.63	4.02	7.20	12.41	10.74	4.69	11.25	-1.66	-7.72	-1.16
9:15:00	9.07	13.50	4.95	8.47	11.74	10.91	4.60	10.44	-0.83	-7.13	-1.30
9:30:00	12.40	8.57	5.80	13.20	12.23	10.17	4.76	10.52	-2.06	-7.46	-1.71
9:45:00	12.19	5.78	5.23	15.44	12.47	9.54	4.65	12.00	-2.94	-7.82	-0.48
10:00:00	16.39	5.41	5.13	13.98	13.47	8.98	5.02	11.66	-4.49	-8.44	-1.81
10:15:00	11.15	12.58	7.28	16.11	12.24	9.17	5.68	13.44	-3.07	-6.56	1.20
10:30:00	10.22	7.37	3.63	--	12.47	7.94	5.41	14.68	-4.53	-7.05	2.21
10:45:00	8.24	11.29	4.21	18.17	11.64	8.48	5.10	15.93	-3.15	-6.54	4.29
11:00:00	10.00	12.18	4.61	28.50	11.20	9.77	4.97	19.19	-1.43	-6.22	7.99
11:15:00	10.75	7.55	5.10	34.70	10.07	10.19	4.97	24.37	0.12	-5.10	14.30
11:30:00	20.09	6.90	4.27	25.56	11.86	9.06	4.36	26.73	-2.80	-7.50	14.87
11:45:00	15.68	7.99	3.89	40.46	12.95	9.18	4.42	29.48	-3.77	-8.54	16.53
12:00:00	12.77	5.28	6.53	25.11	13.86	7.98	4.88	30.87	-5.88	-8.98	17.01
12:15:00	18.74	5.46	8.08	23.39	15.61	6.63	5.57	29.84	-8.97	-10.03	14.24
12:30:00	13.16	5.94	9.73	22.07	16.09	6.31	6.50	27.32	-9.77	-9.59	11.23
12:45:00	9.79	11.97	6.11	42.61	14.03	7.33	6.87	30.73	-6.70	-7.16	16.70
13:00:00	15.02	12.43	7.92	32.64	13.90	8.21	7.68	29.16	-5.68	-6.22	15.27
13:15:00	22.59	15.00	13.14	30.94	15.86	10.16	9.00	30.33	-5.70	-6.86	14.47
13:30:00	19.97	11.04	8.49	34.05	16.11	11.27	9.08	32.46	-4.83	-7.03	16.35
13:45:00	9.38	10.63	17.10	30.40	15.35	12.21	10.55	34.13	-3.14	-4.80	18.78
14:00:00	11.60	10.43	18.51	35.44	15.71	11.90	13.03	32.69	-3.81	-2.68	16.98
14:15:00	18.24	12.67	13.38	34.71	16.35	11.95	14.12	33.11	-4.40	-2.23	16.75
14:30:00	21.21	13.12	11.81	24.30	16.08	11.58	13.86	31.78	-4.50	-2.22	15.70
14:45:00	29.48	12.08	12.60	22.60	17.98	11.79	14.68	29.49	-6.20	-3.30	11.51
15:00:00	15.70	11.59	11.80	26.29	19.25	11.98	13.62	28.67	-7.27	-5.63	9.42
15:15:00	11.24	12.50	11.31	23.61	19.18	12.39	12.18	26.30	-6.78	-7.00	7.13
15:30:00	21.41	14.87	12.00	73.54	19.81	12.83	11.90	34.07	-6.98	-7.91	14.26
15:45:00	13.51	15.22	10.66	45.37	18.27	13.25	11.67	38.28	-5.02	-6.60	20.02
16:00:00	12.69	10.02	11.86	38.60	14.91	12.84	11.53	41.48	-2.07	-3.39	26.57
16:15:00	16.97	10.21	10.95	22.96	15.16	12.56	11.36	40.82	-2.60	-3.81	25.65
16:30:00	12.87	9.60	12.44	21.27	15.49	11.98	11.58	40.35	-3.51	-3.91	24.86
16:45:00	12.31	9.85	8.82	20.82	13.67	10.98	10.95	29.81	-2.69	-2.72	16.14
17:00:00	16.51	12.28	11.92	16.20	14.27	10.39	11.20	23.97	-3.88	-3.07	9.70
17:15:00	16.64	13.65	10.08	39.77	15.06	11.12	10.84	24.21	-3.94	-4.22	9.14
17:30:00	16.78	10.81	15.70	49.38	15.02	11.24	11.79	29.49	-3.78	-3.23	14.47
17:45:00	18.91	9.94	8.13	13.89	16.23	11.31	10.93	28.01	-4.92	-5.30	11.78
18:00:00	19.75	12.62	7.63	11.68	17.72	11.86	10.69	26.18	-5.86	-7.03	8.46

## Friday, September 29, 2023

Time	Turbidity (NTU)				Rolling Average Turbidity (NTU)				Difference (NTU)		
	Ambient	W TB4	S 3rd Street	S Carroll Street	Ambient	W TB4	S 3rd Street	S Carroll Street	W TB4 - Ambient	S 35B - Ambient	S CSB - Ambient
7:00:00	39.13	14.39	11.46	--	34.42	14.48	11.69	34.79	-19.93	-22.73	0.38
7:15:00	24.13	12.57	13.14	30.58	32.76	14.36	12.23	27.25	-18.39	-20.53	-5.50
7:30:00	191.43	11.57	12.76	29.40	65.10	13.38	12.01	25.28	-51.72	-53.09	-39.82
7:45:00	67.66	24.30	26.72	19.43	71.18	15.41	15.13	24.80	-55.77	-56.05	-46.38
8:00:00	23.02	33.00	17.16	61.07	69.08	19.16	16.25	35.12	-49.91	-52.83	-33.96
8:15:00	36.32	96.84	25.84	55.73	68.51	35.66	19.12	39.24	-32.86	-49.39	-29.27
8:30:00	66.08	72.90	45.15	69.76	76.90	47.72	25.52	47.08	-29.18	-51.38	-29.83
8:45:00	56.68	78.44	58.50	62.80	49.95	61.10	34.67	53.76	11.14	-15.28	3.80
9:00:00	64.77	54.20	55.19	72.92	49.37	67.08	40.37	64.45	17.70	-9.01	15.08
9:15:00	63.98	102.55	59.95	73.19	57.56	80.99	48.93	66.88	23.42	-8.64	9.31
9:30:00	55.16	67.96	54.69	66.29	61.33	75.21	54.70	68.99	13.88	-6.64	7.66
9:45:00	82.32	78.84	69.40	100.70	64.58	76.40	59.55	75.18	11.82	-5.03	10.60
10:00:00	59.03	94.97	72.39	118.10	65.05	79.70	62.33	86.24	14.65	-2.73	21.19
10:15:00	99.57	87.85	95.60	122.00	72.01	86.43	70.41	96.06	14.42	-1.60	24.04
10:30:00	56.97	117.26	92.01	133.40	70.61	89.38	76.82	108.10	18.77	6.21	37.49
10:45:00	65.43	107.48	103.22	85.80	72.66	97.28	86.53	112.00	24.62	13.86	39.34
11:00:00	49.30	101.81	103.05	83.14	66.06	101.88	93.26	108.49	35.82	27.20	42.43
11:15:00	--	97.01	100.80	60.01	67.82	102.28	98.94	96.87	34.46	31.12	29.05
11:30:00	54.35	86.41	104.81	60.67	56.51	101.99	100.78	84.60	45.48	44.27	28.09
11:45:00	68.03	84.52	67.92	50.14	59.28	95.45	95.96	67.95	36.17	36.68	8.68
12:00:00	61.52	76.57	82.18	54.72	58.30	89.26	91.75	61.74	30.97	33.45	3.44
12:15:00	66.48	66.89	60.83	84.92	62.59	82.28	83.31	62.09	19.69	20.71	-0.50
12:30:00	65.26	69.88	65.90	102.57	63.13	76.86	76.33	70.60	13.73	13.20	7.48
12:45:00	65.04	65.00	78.21	--	65.27	72.57	71.01	73.09	7.31	5.74	7.82
13:00:00	--	95.36	192.78	85.88	64.57	74.74	95.98	82.02	10.17	31.40	17.45
13:15:00	64.63	133.07	180.27	59.99	65.35	86.04	115.60	83.34	20.69	50.24	17.99
13:30:00	147.24	88.58	131.11	154.44	85.54	90.38	129.65	100.72	4.84	44.11	15.18
13:45:00	56.61	83.61	87.00	90.28	83.38	93.12	133.87	97.65	9.75	50.50	14.27
14:00:00	69.58	82.00	68.42	81.42	84.51	96.52	131.92	94.40	12.01	47.40	9.89
14:15:00	55.48	70.59	78.09	61.40	78.71	91.57	108.98	89.50	12.86	30.27	10.80
14:30:00	--	75.91	68.82	73.27	82.23	80.14	86.69	92.16	-2.09	4.46	9.93
14:45:00	57.95	72.11	63.89	46.71	59.90	76.84	73.24	70.61	16.94	13.34	10.71
15:00:00	59.77	61.29	56.90	57.70	60.69	72.38	67.22	64.10	11.68	6.53	3.40
15:15:00	60.40	60.17	59.03	52.33	58.40	68.01	65.34	58.28	9.61	6.94	-0.12
15:30:00	66.92	70.67	58.19	50.05	61.26	68.03	61.36	56.01	6.77	0.10	-5.25
15:45:00	60.15	61.33	58.09	58.52	61.04	65.11	59.22	53.06	4.08	-1.82	-7.98
16:00:00	64.41	55.84	51.76	65.95	62.33	61.86	56.79	56.91	-0.47	-5.54	-5.42
16:15:00	61.91	71.24	47.26	62.26	62.76	63.85	54.87	57.82	1.09	-7.89	-4.94
16:30:00	63.18	53.06	53.26	66.65	63.31	62.43	53.71	60.69	-0.89	-9.60	-2.63
16:45:00	395.84	54.04	46.12	53.92	129.10	59.10	51.30	61.46	-69.99	-77.80	-67.63
17:00:00	84.80	46.79	40.61	53.88	134.03	56.19	47.80	60.53	-77.83	-86.23	-73.49
17:15:00	124.11	48.25	39.31	51.49	145.97	54.68	45.31	57.64	-91.29	-100.66	-88.33
17:30:00	52.78	55.10	45.28	64.76	144.14	51.45	44.91	58.14	-92.69	-99.23	-86.00
17:45:00	85.92	46.05	55.50	49.83	148.69	50.05	45.36	54.78	-98.64	-103.33	-93.91
18:00:00	53.16	52.42	39.68	57.83	80.15	49.72	44.07	55.56	-30.43	-36.08	-24.60

**APPENDIX B**  
**Dissolved Oxygen Data**

September 24 - 30, 2023

Date	Time	DO (mg/L)			
		Ambient	W TB4	S 3SB	S CSB
9/24/2023	0:00:00	1.76	0.16	1.40	0.89
9/24/2023	0:15:00	1.79	0.62	1.36	0.93
9/24/2023	0:30:00	1.63	0.50	1.17	0.97
9/24/2023	0:45:00	1.73	0.22	1.20	0.91
9/24/2023	1:00:00	1.73	0.48	1.40	0.96
9/24/2023	1:15:00	1.55	0.51	1.35	0.97
9/24/2023	1:30:00	1.42	0.49	1.42	0.98
9/24/2023	1:45:00	1.44	0.61	1.33	1.03
9/24/2023	2:00:00	1.43	0.45	1.58	0.99
9/24/2023	2:15:00	1.40	0.39	1.43	1.03
9/24/2023	2:30:00	1.33	0.53	1.61	1.07
9/24/2023	2:45:00	1.20	0.42	1.60	1.10
9/24/2023	3:00:00	1.43	0.17	1.60	1.41
9/24/2023	3:15:00	1.39	0.31	1.05	1.17
9/24/2023	3:30:00	1.35	0.00	1.23	--
9/24/2023	3:45:00	1.30	0.03	1.19	1.42
9/24/2023	4:00:00	1.34	0.27	1.74	1.33
9/24/2023	4:15:00	1.33	0.35	1.42	1.67
9/24/2023	4:30:00	1.34	0.23	1.68	1.75
9/24/2023	4:45:00	1.32	0.33	1.49	1.71
9/24/2023	5:00:00	1.25	0.20	1.02	1.80
9/24/2023	5:15:00	1.15	0.33	1.07	1.98
9/24/2023	5:30:00	1.21	0.28	1.05	1.93
9/24/2023	5:45:00	1.22	0.21	1.13	1.90
9/24/2023	6:00:00	1.02	0.35	1.13	1.86
9/24/2023	6:15:00	0.95	0.29	1.17	1.88
9/24/2023	6:30:00	0.97	0.11	1.00	1.54
9/24/2023	6:45:00	0.98	0.43	1.05	1.50
9/24/2023	7:00:00	0.94	0.53	1.02	1.90
9/24/2023	7:15:00	0.97	0.38	1.06	1.81
9/24/2023	7:30:00	0.97	0.32	1.30	1.69
9/24/2023	7:45:00	1.01	0.65	1.18	1.50
9/24/2023	8:00:00	1.00	0.60	1.77	1.41
9/24/2023	8:15:00	0.82	0.78	1.61	1.47
9/24/2023	8:30:00	0.88	1.19	1.74	1.57
9/24/2023	8:45:00	0.93	1.24	1.64	1.68
9/24/2023	9:00:00	0.92	1.25	1.96	2.02
9/24/2023	9:15:00	1.25	0.58	2.16	2.05
9/24/2023	9:30:00	0.99	1.03	2.18	1.91
9/24/2023	9:45:00	0.94	1.21	1.94	1.93
9/24/2023	10:00:00	1.03	1.49	2.12	1.96
9/24/2023	10:15:00	0.99	1.42	1.75	1.91
9/24/2023	10:30:00	1.04	1.18	1.96	1.87
9/24/2023	10:45:00	1.17	0.71	1.86	1.81
9/24/2023	11:00:00	1.06	0.56	1.78	1.74
9/24/2023	11:15:00	1.06	0.29	1.22	1.81
9/24/2023	11:30:00	1.01	0.19	1.20	1.74
9/24/2023	11:45:00	0.97	0.13	1.21	1.71

Note: Data has not been validated

**September 24 - 30, 2023**

Date	Time	DO (mg/L)			
		Ambient	W TB4	S 3SB	S CSB
9/24/2023	12:00:00	1.07	0.46	1.44	1.62
9/24/2023	12:15:00	1.07	0.36	1.29	1.74
9/24/2023	12:30:00	1.08	0.71	1.55	1.64
9/24/2023	12:45:00	1.02	0.77	1.90	1.78
9/24/2023	13:00:00	1.09	1.64	2.11	1.71
9/24/2023	13:15:00	0.97	1.85	2.24	1.64
9/24/2023	13:30:00	1.08	1.62	2.50	1.70
9/24/2023	13:45:00	1.04	1.23	2.37	1.65
9/24/2023	14:00:00	1.05	1.93	2.39	1.66
9/24/2023	14:15:00	1.13	1.95	2.49	1.64
9/24/2023	14:30:00	1.12	1.04	2.71	1.63
9/24/2023	14:45:00	1.24	1.47	3.04	1.62
9/24/2023	15:00:00	1.17	1.14	3.18	1.70
9/24/2023	15:15:00	1.21	1.10	3.09	1.72
9/24/2023	15:30:00	1.33	1.19	2.57	1.81
9/24/2023	15:45:00	1.26	1.30	2.88	1.83
9/24/2023	16:00:00	1.25	1.24	2.75	1.87
9/24/2023	16:15:00	1.30	1.24	2.63	2.12
9/24/2023	16:30:00	1.33	1.38	3.22	2.15
9/24/2023	16:45:00	1.35	1.81	3.04	2.21
9/24/2023	17:00:00	1.22	1.53	3.11	2.15
9/24/2023	17:15:00	1.48	1.61	2.94	--
9/24/2023	17:30:00	1.58	1.73	2.90	2.33
9/24/2023	17:45:00	1.42	1.60	2.79	2.30
9/24/2023	18:00:00	1.39	1.49	2.77	2.28
9/24/2023	18:15:00	1.55	1.90	3.01	2.49
9/24/2023	18:30:00	1.81	1.89	3.07	2.18
9/24/2023	18:45:00	1.95	2.22	2.86	2.83
9/24/2023	19:00:00	2.65	2.27	3.41	2.86
9/24/2023	19:15:00	2.22	2.41	3.45	2.85
9/24/2023	19:30:00	2.95	1.87	3.26	2.72
9/24/2023	19:45:00	2.61	1.58	3.17	2.61
9/24/2023	20:00:00	2.61	1.57	2.84	2.69
9/24/2023	20:15:00	2.67	1.51	2.98	2.54
9/24/2023	20:30:00	2.61	1.68	2.81	2.67
9/24/2023	20:45:00	2.68	1.24	2.73	3.03
9/24/2023	21:00:00	2.30	1.56	2.81	2.85
9/24/2023	21:15:00	2.97	1.22	2.56	3.03
9/24/2023	21:30:00	2.68	1.30	2.48	2.72
9/24/2023	21:45:00	2.93	1.38	2.34	2.64
9/24/2023	22:00:00	2.88	1.25	2.37	2.51
9/24/2023	22:15:00	2.56	1.24	1.96	2.47
9/24/2023	22:30:00	2.36	1.37	1.75	2.30
9/24/2023	22:45:00	2.38	0.97	1.79	2.23
9/24/2023	23:00:00	2.65	1.46	1.87	2.44
9/24/2023	23:15:00	2.31	0.75	1.73	2.18
9/24/2023	23:30:00	2.27	0.48	1.57	2.19
9/24/2023	23:45:00	2.20	0.58	1.37	2.18

Note: Data has not been validated



**September 24 - 30, 2023**

Date	Time	DO (mg/L)			
		Ambient	W TB4	S 3SB	S CSB
9/25/2023	0:00:00	1.80	0.20	1.53	2.22
9/25/2023	0:15:00	1.31	0.08	1.27	2.24
9/25/2023	0:30:00	1.54	0.02	1.52	2.20
9/25/2023	0:45:00	1.28	0.47	1.26	2.10
9/25/2023	1:00:00	1.29	0.44	1.48	2.11
9/25/2023	1:15:00	1.06	0.90	1.36	2.08
9/25/2023	1:30:00	0.60	0.11	1.58	1.94
9/25/2023	1:45:00	1.05	0.70	1.69	1.90
9/25/2023	2:00:00	0.24	0.23	1.76	1.86
9/25/2023	2:15:00	0.41	0.00	1.36	1.86
9/25/2023	2:30:00	0.26	0.01	1.20	1.80
9/25/2023	2:45:00	0.38	0.18	1.79	1.73
9/25/2023	3:00:00	0.32	0.01	1.57	1.66
9/25/2023	3:15:00	0.13	0.10	1.51	1.63
9/25/2023	3:30:00	0.23	0.16	1.64	1.54
9/25/2023	3:45:00	0.36	0.04	1.37	1.70
9/25/2023	4:00:00	0.26	0.13	1.59	1.56
9/25/2023	4:15:00	0.35	0.06	2.00	1.52
9/25/2023	4:30:00	0.40	0.00	1.77	1.47
9/25/2023	4:45:00	0.27	0.19	1.52	1.56
9/25/2023	5:00:00	0.34	0.00	2.23	1.54
9/25/2023	5:15:00	0.62	0.20	1.38	1.69
9/25/2023	5:30:00	0.32	0.00	2.25	1.43
9/25/2023	5:45:00	0.15	0.17	2.10	1.47
9/25/2023	6:00:00	0.45	0.15	3.22	1.67
9/25/2023	6:15:00	0.26	0.61	3.60	1.90
9/25/2023	6:30:00	0.85	0.97	2.45	--
9/25/2023	6:45:00	1.35	1.03	2.23	1.38
9/25/2023	7:00:00	1.47	0.67	2.37	1.70
9/25/2023	7:15:00	1.55	1.05	2.05	1.95
9/25/2023	7:30:00	1.17	1.02	2.29	2.00
9/25/2023	7:45:00	1.35	1.24	2.14	1.86
9/25/2023	8:00:00	1.31	1.05	2.01	1.58
9/25/2023	8:15:00	1.19	1.38	2.18	2.21
9/25/2023	8:30:00	1.09	1.14	2.01	1.95
9/25/2023	8:45:00	1.16	0.97	2.16	1.67
9/25/2023	9:00:00	1.25	1.44	2.24	1.71
9/25/2023	9:15:00	1.44	1.42	2.44	2.11
9/25/2023	9:30:00	1.32	1.16	2.20	1.85
9/25/2023	9:45:00	1.47	0.82	2.08	1.87
9/25/2023	10:00:00	1.62	1.16	2.29	1.89
9/25/2023	10:15:00	1.71	1.25	2.37	1.99
9/25/2023	10:30:00	1.43	1.32	2.31	1.94
9/25/2023	10:45:00	1.19	1.29	2.31	1.88
9/25/2023	11:00:00	1.37	1.16	2.44	2.06
9/25/2023	11:15:00	1.89	1.37	2.51	2.21
9/25/2023	11:30:00	1.94	1.70	2.58	2.25
9/25/2023	11:45:00	1.92	1.17	2.34	2.15

Note: Data has not been validated

**September 24 - 30, 2023**

Date	Time	DO (mg/L)			
		Ambient	W TB4	S 3SB	S CSB
9/25/2023	12:00:00	1.89	1.61	2.53	2.23
9/25/2023	12:15:00	1.73	1.39	2.35	2.47
9/25/2023	12:30:00	1.77	1.29	2.32	2.66
9/25/2023	12:45:00	1.74	1.23	2.37	2.58
9/25/2023	13:00:00	1.83	1.28	2.18	2.64
9/25/2023	13:15:00	1.88	1.39	2.52	2.70
9/25/2023	13:30:00	1.88	1.60	2.81	2.77
9/25/2023	13:45:00	1.85	1.33	2.66	2.81
9/25/2023	14:00:00	1.78	1.17	2.59	2.85
9/25/2023	14:15:00	1.75	1.22	2.74	2.72
9/25/2023	14:30:00	1.68	1.13	2.95	2.76
9/25/2023	14:45:00	1.60	1.12	3.14	2.69
9/25/2023	15:00:00	1.66	1.42	3.25	2.77
9/25/2023	15:15:00	1.61	1.50	3.34	2.72
9/25/2023	15:30:00	1.30	1.61	3.55	2.92
9/25/2023	15:45:00	1.48	1.42	3.40	2.93
9/25/2023	16:00:00	1.42	1.76	3.53	2.97
9/25/2023	16:15:00	1.67	1.91	3.71	3.09
9/25/2023	16:30:00	1.57	2.09	3.95	3.09
9/25/2023	16:45:00	1.65	1.96	3.56	3.12
9/25/2023	17:00:00	1.95	2.06	3.54	3.17
9/25/2023	17:15:00	1.97	2.03	3.18	2.91
9/25/2023	17:30:00	1.94	1.50	3.41	2.95
9/25/2023	17:45:00	2.04	1.44	3.06	3.04
9/25/2023	18:00:00	2.00	1.35	3.15	2.97
9/25/2023	18:15:00	2.11	1.41	3.00	3.09
9/25/2023	18:30:00	1.88	1.30	2.68	2.88
9/25/2023	18:45:00	1.82	1.32	2.63	2.95
9/25/2023	19:00:00	2.02	1.43	2.92	2.96
9/25/2023	19:15:00	1.91	1.47	2.84	2.95
9/25/2023	19:30:00	1.89	1.64	3.02	2.96
9/25/2023	19:45:00	2.20	1.30	2.53	2.84
9/25/2023	20:00:00	2.33	1.50	2.88	2.60
9/25/2023	20:15:00	2.27	1.55	3.01	--
9/25/2023	20:30:00	2.30	1.48	3.00	2.58
9/25/2023	20:45:00	2.25	1.44	3.09	2.41
9/25/2023	21:00:00	2.18	1.35	3.07	2.37
9/25/2023	21:15:00	2.26	1.35	2.97	2.35
9/25/2023	21:30:00	2.05	1.41	2.57	2.33
9/25/2023	21:45:00	2.02	1.51	2.37	2.34
9/25/2023	22:00:00	1.82	1.28	2.37	2.28
9/25/2023	22:15:00	1.96	1.20	2.43	2.11
9/25/2023	22:30:00	1.74	1.18	2.25	2.20
9/25/2023	22:45:00	2.02	1.18	2.26	1.94
9/25/2023	23:00:00	1.89	1.25	2.22	1.85
9/25/2023	23:15:00	2.00	1.14	2.13	1.82
9/25/2023	23:30:00	2.11	1.34	2.11	1.85
9/25/2023	23:45:00	1.83	1.13	1.87	1.80

Note: Data has not been validated

September 24 - 30, 2023

Date	Time	DO (mg/L)			
		Ambient	W TB4	S 3SB	S CSB
9/26/2023	0:00:00	1.82	1.05	1.74	1.23
9/26/2023	0:15:00	1.94	1.18	1.78	1.68
9/26/2023	0:30:00	1.95	1.08	1.73	1.61
9/26/2023	0:45:00	1.84	0.78	1.74	1.84
9/26/2023	1:00:00	1.92	1.09	1.80	1.85
9/26/2023	1:15:00	1.77	1.08	2.05	1.79
9/26/2023	1:30:00	1.70	1.20	2.04	1.59
9/26/2023	1:45:00	1.82	1.50	2.05	1.63
9/26/2023	2:00:00	1.58	1.10	2.08	1.76
9/26/2023	2:15:00	1.50	1.03	2.09	2.02
9/26/2023	2:30:00	1.70	1.35	2.14	2.01
9/26/2023	2:45:00	1.46	1.20	2.27	2.31
9/26/2023	3:00:00	1.79	1.04	1.61	2.16
9/26/2023	3:15:00	1.67	1.18	1.89	2.03
9/26/2023	3:30:00	1.59	1.00	2.01	2.31
9/26/2023	3:45:00	1.90	1.02	1.75	2.32
9/26/2023	4:00:00	1.55	0.93	1.77	2.30
9/26/2023	4:15:00	1.83	0.91	1.88	2.31
9/26/2023	4:30:00	1.78	0.99	2.06	2.31
9/26/2023	4:45:00	1.90	1.04	2.02	2.33
9/26/2023	5:00:00	1.83	1.06	2.08	2.31
9/26/2023	5:15:00	1.79	0.92	2.15	2.24
9/26/2023	5:30:00	1.82	1.15	2.17	2.17
9/26/2023	5:45:00	1.72	0.81	2.01	2.00
9/26/2023	6:00:00	1.80	1.29	2.24	2.03
9/26/2023	6:15:00	1.66	1.22	2.16	1.98
9/26/2023	6:30:00	1.65	1.33	2.30	1.84
9/26/2023	6:45:00	1.50	1.27	2.11	1.43
9/26/2023	7:00:00	1.51	1.11	2.17	1.66
9/26/2023	7:15:00	1.46	1.28	2.50	1.61
9/26/2023	7:30:00	1.42	1.60	2.48	1.70
9/26/2023	7:45:00	1.28	1.54	2.55	1.52
9/26/2023	8:00:00	1.50	1.53	2.19	1.46
9/26/2023	8:15:00	1.57	1.51	2.27	1.31
9/26/2023	8:30:00	1.35	1.41	2.18	1.31
9/26/2023	8:45:00	1.46	1.45	2.15	1.32
9/26/2023	9:00:00	1.36	1.48	1.99	1.32
9/26/2023	9:15:00	1.41	1.25	1.85	0.95
9/26/2023	9:30:00	1.37	1.30	2.06	0.83
9/26/2023	9:45:00	1.39	1.13	1.77	0.67
9/26/2023	10:00:00	1.37	1.04	1.71	0.52
9/26/2023	10:15:00	1.64	1.17	1.65	0.47
9/26/2023	10:30:00	1.51	1.31	1.42	--
9/26/2023	10:45:00	1.28	1.23	1.67	0.33
9/26/2023	11:00:00	1.60	1.08	1.74	0.26
9/26/2023	11:15:00	1.55	1.42	1.26	0.56
9/26/2023	11:30:00	1.35	1.06	0.79	0.24
9/26/2023	11:45:00	1.62	1.17	0.78	0.20

Note: Data has not been validated

**September 24 - 30, 2023**

Date	Time	DO (mg/L)			
		Ambient	W TB4	S 3SB	S CSB
9/26/2023	12:00:00	1.71	0.95	0.70	0.20
9/26/2023	12:15:00	2.43	1.04	1.58	0.19
9/26/2023	12:30:00	2.39	1.20	1.61	0.18
9/26/2023	12:45:00	2.24	1.76	1.28	0.25
9/26/2023	13:00:00	1.72	1.56	2.41	0.10
9/26/2023	13:15:00	1.72	2.00	2.58	0.26
9/26/2023	13:30:00	1.67	1.51	2.41	0.26
9/26/2023	13:45:00	1.51	1.40	2.59	0.19
9/26/2023	14:00:00	1.30	1.29	2.41	0.20
9/26/2023	14:15:00	1.22	1.51	2.10	0.22
9/26/2023	14:30:00	1.27	1.37	2.54	0.32
9/26/2023	14:45:00	1.29	1.86	2.87	1.04
9/26/2023	15:00:00	1.65	1.61	2.40	0.60
9/26/2023	15:15:00	1.79	1.75	2.85	1.43
9/26/2023	15:30:00	1.73	1.47	2.62	1.57
9/26/2023	15:45:00	1.82	1.15	2.68	1.33
9/26/2023	16:00:00	1.75	1.69	2.76	1.57
9/26/2023	16:15:00	1.70	1.69	3.01	1.54
9/26/2023	16:30:00	1.67	1.87	3.10	1.40
9/26/2023	16:45:00	1.68	1.87	3.12	1.39
9/26/2023	17:00:00	1.53	1.68	3.16	1.75
9/26/2023	17:15:00	1.59	2.19	3.38	1.76
9/26/2023	17:30:00	1.47	1.94	3.39	1.67
9/26/2023	17:45:00	1.34	1.36	3.31	1.49
9/26/2023	18:00:00	0.92	1.24	3.29	1.73
9/26/2023	18:15:00	1.30	1.25	3.06	1.81
9/26/2023	18:30:00	1.39	1.14	2.96	1.64
9/26/2023	18:45:00	1.44	1.12	2.79	1.38
9/26/2023	19:00:00	1.48	1.02	2.57	1.43
9/26/2023	19:15:00	1.42	1.26	2.26	1.51
9/26/2023	19:30:00	1.46	0.89	2.27	1.40
9/26/2023	19:45:00	1.41	0.89	1.95	1.41
9/26/2023	20:00:00	1.37	1.01	1.98	1.25
9/26/2023	20:15:00	1.15	0.88	1.75	1.09
9/26/2023	20:30:00	1.35	0.48	1.65	0.86
9/26/2023	20:45:00	1.25	0.38	1.96	0.94
9/26/2023	21:00:00	1.10	0.86	1.95	1.00
9/26/2023	21:15:00	1.21	0.86	1.86	0.89
9/26/2023	21:30:00	1.13	0.99	2.00	0.94
9/26/2023	21:45:00	1.07	0.79	1.71	1.03
9/26/2023	22:00:00	1.15	1.02	1.81	0.82
9/26/2023	22:15:00	1.28	0.14	1.69	0.53
9/26/2023	22:30:00	1.39	0.70	1.62	0.66
9/26/2023	22:45:00	1.28	0.56	1.65	0.48
9/26/2023	23:00:00	1.38	0.81	1.36	0.36
9/26/2023	23:15:00	1.28	0.39	1.66	--
9/26/2023	23:30:00	1.21	0.29	1.32	0.23
9/26/2023	23:45:00	1.20	0.57	1.35	0.21

Note: Data has not been validated

**September 24 - 30, 2023**

Date	Time	DO (mg/L)			
		Ambient	W TB4	S 3SB	S CSB
9/27/2023	0:00:00	1.11	0.64	1.07	0.24
9/27/2023	0:15:00	1.18	0.54	1.10	0.21
9/27/2023	0:30:00	1.24	0.50	0.74	0.21
9/27/2023	0:45:00	1.13	0.66	0.58	0.30
9/27/2023	1:00:00	1.26	0.51	0.62	0.20
9/27/2023	1:15:00	1.35	0.51	0.49	0.27
9/27/2023	1:30:00	1.36	0.58	1.00	0.28
9/27/2023	1:45:00	1.32	0.39	0.88	0.34
9/27/2023	2:00:00	1.16	0.50	0.93	0.28
9/27/2023	2:15:00	1.19	0.29	0.62	0.21
9/27/2023	2:30:00	1.06	0.83	0.90	0.22
9/27/2023	2:45:00	1.18	0.60	0.93	0.14
9/27/2023	3:00:00	1.23	1.07	1.28	0.22
9/27/2023	3:15:00	1.18	0.61	1.49	0.26
9/27/2023	3:30:00	1.13	1.20	1.51	0.30
9/27/2023	3:45:00	1.36	0.76	1.73	0.29
9/27/2023	4:00:00	1.31	1.23	1.85	0.37
9/27/2023	4:15:00	1.37	0.95	2.19	0.34
9/27/2023	4:30:00	1.33	1.08	2.36	0.33
9/27/2023	4:45:00	1.00	1.32	2.04	0.26
9/27/2023	5:00:00	1.02	1.34	2.09	0.32
9/27/2023	5:15:00	1.29	1.16	2.06	0.23
9/27/2023	5:30:00	0.93	0.95	2.25	0.19
9/27/2023	5:45:00	1.11	0.98	2.22	0.16
9/27/2023	6:00:00	1.00	1.02	2.18	0.23
9/27/2023	6:15:00	0.81	1.06	2.27	0.37
9/27/2023	6:30:00	0.73	1.29	2.25	0.74
9/27/2023	6:45:00	0.97	1.15	2.02	1.00
9/27/2023	7:00:00	1.03	1.01	1.93	1.09
9/27/2023	7:15:00	1.03	0.90	2.07	1.25
9/27/2023	7:30:00	1.23	1.13	1.87	1.40
9/27/2023	7:45:00	1.33	1.08	1.94	1.48
9/27/2023	8:00:00	1.64	1.30	1.91	1.50
9/27/2023	8:15:00	1.70	1.18	1.86	1.41
9/27/2023	8:30:00	1.60	1.38	1.83	1.20
9/27/2023	8:45:00	1.61	1.56	1.82	1.00
9/27/2023	9:00:00	1.61	1.18	1.77	0.92
9/27/2023	9:15:00	1.76	1.64	1.58	0.94
9/27/2023	9:30:00	1.78	1.79	1.60	0.99
9/27/2023	9:45:00	1.75	1.60	1.73	1.05
9/27/2023	10:00:00	2.02	1.72	0.89	0.98
9/27/2023	10:15:00	2.02	1.52	1.82	3.55
9/27/2023	10:30:00	2.02	1.36	1.78	0.97
9/27/2023	10:45:00	2.05	1.44	1.65	0.83
9/27/2023	11:00:00	2.00	1.64	1.85	0.75
9/27/2023	11:15:00	2.02	1.69	1.56	0.66
9/27/2023	11:30:00	1.98	1.42	1.57	0.65
9/27/2023	11:45:00	2.02	1.43	1.67	0.69

Note: Data has not been validated



**September 24 - 30, 2023**

Date	Time	DO (mg/L)			
		Ambient	W TB4	S 3SB	S CSB
9/27/2023	12:00:00	2.00	1.54	1.53	0.56
9/27/2023	12:15:00	1.99	1.41	1.44	0.51
9/27/2023	12:30:00	1.93	1.38	1.39	0.45
9/27/2023	12:45:00	1.98	1.49	1.33	--
9/27/2023	13:00:00	2.14	1.55	1.20	0.27
9/27/2023	13:15:00	2.07	1.52	1.24	0.45
9/27/2023	13:30:00	2.03	1.55	1.39	0.55
9/27/2023	13:45:00	2.26	1.64	2.38	0.38
9/27/2023	14:00:00	2.29	1.81	2.98	0.40
9/27/2023	14:15:00	2.30	1.80	3.03	0.54
9/27/2023	14:30:00	2.63	2.09	3.15	0.40
9/27/2023	14:45:00	2.60	2.02	3.30	0.60
9/27/2023	15:00:00	2.39	2.06	3.21	1.02
9/27/2023	15:15:00	2.03	1.81	3.30	1.20
9/27/2023	15:30:00	2.11	1.94	3.12	1.10
9/27/2023	15:45:00	1.93	1.91	2.96	1.54
9/27/2023	16:00:00	2.40	1.94	3.11	1.75
9/27/2023	16:15:00	2.37	1.98	3.01	1.65
9/27/2023	16:30:00	2.47	2.02	3.13	1.53
9/27/2023	16:45:00	2.39	2.15	3.21	1.24
9/27/2023	17:00:00	2.30	1.84	3.33	1.84
9/27/2023	17:15:00	2.27	1.87	3.10	2.52
9/27/2023	17:30:00	2.32	1.81	3.12	2.42
9/27/2023	17:45:00	2.35	1.86	2.97	2.40
9/27/2023	18:00:00	2.41	1.85	2.89	2.35
9/27/2023	18:15:00	2.44	1.80	2.88	2.33
9/27/2023	18:30:00	2.45	1.81	2.84	2.30
9/27/2023	18:45:00	2.38	1.73	2.76	2.37
9/27/2023	19:00:00	2.46	1.72	2.84	2.47
9/27/2023	19:15:00	2.48	1.75	2.89	2.59
9/27/2023	19:30:00	2.41	1.68	2.83	2.67
9/27/2023	19:45:00	2.46	1.65	2.81	2.50
9/27/2023	20:00:00	2.35	1.55	2.74	2.47
9/27/2023	20:15:00	2.34	1.63	2.76	2.42
9/27/2023	20:30:00	2.28	1.69	2.60	2.32
9/27/2023	20:45:00	2.32	1.62	2.57	2.13
9/27/2023	21:00:00	2.27	1.59	2.62	2.09
9/27/2023	21:15:00	2.28	1.63	2.64	2.02
9/27/2023	21:30:00	2.15	1.60	2.43	2.06
9/27/2023	21:45:00	2.22	1.63	2.55	1.88
9/27/2023	22:00:00	2.23	1.63	2.57	1.76
9/27/2023	22:15:00	2.25	1.59	2.47	1.77
9/27/2023	22:30:00	2.23	1.60	2.46	1.61
9/27/2023	22:45:00	2.22	1.56	2.35	1.40
9/27/2023	23:00:00	2.25	1.46	2.25	1.46
9/27/2023	23:15:00	2.12	1.53	2.17	1.36
9/27/2023	23:30:00	2.04	1.45	2.11	1.23
9/27/2023	23:45:00	2.09	1.43	1.99	1.17

Note: Data has not been validated

**September 24 - 30, 2023**

Date	Time	DO (mg/L)			
		Ambient	W TB4	S 3SB	S CSB
9/28/2023	0:00:00	2.08	1.39	1.81	0.98
9/28/2023	0:15:00	2.18	1.38	1.76	0.92
9/28/2023	0:30:00	2.19	1.34	1.51	0.53
9/28/2023	0:45:00	2.16	1.34	1.57	0.70
9/28/2023	1:00:00	2.14	1.33	1.50	0.59
9/28/2023	1:15:00	2.15	1.31	1.52	0.66
9/28/2023	1:30:00	2.08	1.36	1.50	0.53
9/28/2023	1:45:00	2.06	1.28	1.48	0.49
9/28/2023	2:00:00	2.03	1.32	1.31	0.53
9/28/2023	2:15:00	2.00	1.29	1.42	0.57
9/28/2023	2:30:00	1.99	1.11	1.42	0.72
9/28/2023	2:45:00	1.95	1.07	1.66	0.55
9/28/2023	3:00:00	1.94	1.08	1.76	0.72
9/28/2023	3:15:00	1.97	1.23	1.67	1.07
9/28/2023	3:30:00	1.94	1.34	2.07	1.29
9/28/2023	3:45:00	1.98	1.53	2.09	1.26
9/28/2023	4:00:00	1.94	1.59	2.37	1.21
9/28/2023	4:15:00	1.97	1.59	2.41	1.20
9/28/2023	4:30:00	1.96	1.61	2.47	1.23
9/28/2023	4:45:00	2.00	1.69	2.47	1.31
9/28/2023	5:00:00	2.00	1.69	2.48	1.41
9/28/2023	5:15:00	2.01	1.68	2.52	1.56
9/28/2023	5:30:00	2.02	1.70	2.54	1.60
9/28/2023	5:45:00	1.97	1.84	2.60	1.61
9/28/2023	6:00:00	2.01	1.88	2.60	1.62
9/28/2023	6:15:00	1.92	1.86	2.58	1.67
9/28/2023	6:30:00	1.94	1.67	2.55	1.74
9/28/2023	6:45:00	1.98	1.74	2.51	1.79
9/28/2023	7:00:00	2.03	1.62	2.51	1.89
9/28/2023	7:15:00	1.97	1.91	2.46	1.92
9/28/2023	7:30:00	2.02	1.96	2.49	1.98
9/28/2023	7:45:00	1.99	1.86	2.41	2.00
9/28/2023	8:00:00	2.01	1.99	3.05	2.05
9/28/2023	8:15:00	1.97	1.94	3.53	1.76
9/28/2023	8:30:00	1.96	1.87	2.65	1.67
9/28/2023	8:45:00	1.99	1.89	2.39	1.71
9/28/2023	9:00:00	1.98	1.99	2.58	1.78
9/28/2023	9:15:00	2.02	2.53	2.40	1.89
9/28/2023	9:30:00	2.02	2.32	2.31	1.63
9/28/2023	9:45:00	2.03	1.65	2.27	1.45
9/28/2023	10:00:00	2.04	1.52	2.32	1.43
9/28/2023	10:15:00	2.07	2.13	2.54	1.20
9/28/2023	10:30:00	2.08	1.96	2.31	1.17
9/28/2023	10:45:00	2.10	1.85	2.38	0.96
9/28/2023	11:00:00	2.13	1.96	2.43	1.12
9/28/2023	11:15:00	2.13	1.84	2.23	0.82
9/28/2023	11:30:00	2.14	1.72	2.23	0.77
9/28/2023	11:45:00	2.15	1.78	2.38	0.68

Note: Data has not been validated

**September 24 - 30, 2023**

Date	Time	DO (mg/L)			
		Ambient	W TB4	S 3SB	S CSB
9/28/2023	12:00:00	2.15	1.59	2.02	0.63
9/28/2023	12:15:00	2.15	1.51	1.96	0.58
9/28/2023	12:30:00	2.23	1.57	1.90	0.47
9/28/2023	12:45:00	2.12	1.73	1.81	0.41
9/28/2023	13:00:00	2.26	1.48	1.59	0.21
9/28/2023	13:15:00	2.29	1.74	1.46	0.19
9/28/2023	13:30:00	2.27	1.65	1.33	0.26
9/28/2023	13:45:00	2.36	1.73	1.61	0.16
9/28/2023	14:00:00	2.31	1.70	1.27	0.16
9/28/2023	14:15:00	2.10	1.74	1.08	0.34
9/28/2023	14:30:00	2.01	1.85	1.12	0.27
9/28/2023	14:45:00	2.21	1.94	2.62	0.36
9/28/2023	15:00:00	2.29	2.28	3.26	0.44
9/28/2023	15:15:00	2.66	2.39	3.51	0.46
9/28/2023	15:30:00	2.81	2.45	3.68	0.61
9/28/2023	15:45:00	2.75	2.13	3.80	0.72
9/28/2023	16:00:00	2.62	2.01	3.38	0.98
9/28/2023	16:15:00	2.68	2.18	3.32	0.73
9/28/2023	16:30:00	2.71	2.20	3.44	0.83
9/28/2023	16:45:00	2.80	2.11	3.29	0.96
9/28/2023	17:00:00	2.86	2.20	3.32	1.06
9/28/2023	17:15:00	2.78	2.18	3.50	2.27
9/28/2023	17:30:00	2.76	2.19	3.48	2.46
9/28/2023	17:45:00	2.79	2.17	3.57	2.53
9/28/2023	18:00:00	2.64	2.22	3.77	2.54
9/28/2023	18:15:00	2.61	2.16	3.56	2.59
9/28/2023	18:30:00	2.48	2.22	3.40	2.57
9/28/2023	18:45:00	2.49	2.09	3.33	2.76
9/28/2023	19:00:00	2.46	2.12	3.37	2.76
9/28/2023	19:15:00	2.41	2.10	3.16	2.76
9/28/2023	19:30:00	2.48	2.06	3.20	2.39
9/28/2023	19:45:00	2.53	2.00	3.25	2.48
9/28/2023	20:00:00	2.56	1.82	3.18	2.40
9/28/2023	20:15:00	2.39	1.78	3.11	2.11
9/28/2023	20:30:00	2.45	1.89	2.99	2.03
9/28/2023	20:45:00	2.36	1.93	2.84	1.56
9/28/2023	21:00:00	2.26	1.85	2.74	1.15
9/28/2023	21:15:00	2.24	1.87	2.75	1.00
9/28/2023	21:30:00	2.22	1.85	2.70	0.99
9/28/2023	21:45:00	2.31	1.81	2.66	1.07
9/28/2023	22:00:00	2.49	1.81	2.63	0.84
9/28/2023	22:15:00	2.03	1.69	2.57	1.10
9/28/2023	22:30:00	1.86	1.72	2.48	0.99
9/28/2023	22:45:00	1.90	1.72	2.20	1.07
9/28/2023	23:00:00	1.88	1.64	2.10	0.64
9/28/2023	23:15:00	1.95	1.57	1.79	1.48
9/28/2023	23:30:00	1.90	1.59	1.52	1.11
9/28/2023	23:45:00	2.20	1.34	1.29	2.05

Note: Data has not been validated

**September 24 - 30, 2023**

Date	Time	DO (mg/L)			
		Ambient	W TB4	S 3SB	S CSB
9/29/2023	0:00:00	2.25	1.18	1.50	2.20
9/29/2023	0:15:00	2.23	3.28	2.82	1.37
9/29/2023	0:30:00	3.74	2.94	3.29	1.64
9/29/2023	0:45:00	3.55	2.81	4.41	1.45
9/29/2023	1:00:00	3.87	2.77	3.77	2.50
9/29/2023	1:15:00	3.71	2.78	3.73	2.51
9/29/2023	1:30:00	3.87	2.70	3.89	2.29
9/29/2023	1:45:00	4.07	2.83	3.63	2.78
9/29/2023	2:00:00	4.25	2.63	3.57	2.27
9/29/2023	2:15:00	4.21	2.65	3.20	2.42
9/29/2023	2:30:00	3.98	2.41	3.40	2.57
9/29/2023	2:45:00	3.91	2.64	3.39	2.97
9/29/2023	3:00:00	3.87	2.53	3.07	3.11
9/29/2023	3:15:00	3.87	2.98	4.55	3.78
9/29/2023	3:30:00	4.86	2.56	3.96	4.65
9/29/2023	3:45:00	4.91	3.65	4.54	4.45
9/29/2023	4:00:00	4.20	3.52	5.77	5.77
9/29/2023	4:15:00	5.29	3.04	5.61	4.65
9/29/2023	4:30:00	5.07	3.00	5.19	4.75
9/29/2023	4:45:00	4.69	3.42	5.42	4.33
9/29/2023	5:00:00	4.02	3.82	5.13	4.53
9/29/2023	5:15:00	4.25	3.63	5.13	4.45
9/29/2023	5:30:00	5.23	3.04	4.66	4.87
9/29/2023	5:45:00	5.53	3.00	4.68	4.13
9/29/2023	6:00:00	4.75	3.04	4.16	4.58
9/29/2023	6:15:00	5.20	3.69	3.82	3.43
9/29/2023	6:30:00	4.96	3.73	5.17	3.53
9/29/2023	6:45:00	4.85	3.71	4.30	4.17
9/29/2023	7:00:00	4.12	3.54	4.41	3.79
9/29/2023	7:15:00	4.15	3.53	4.32	4.67
9/29/2023	7:30:00	4.19	3.35	4.74	5.96
9/29/2023	7:45:00	4.21	3.90	5.24	7.31
9/29/2023	8:00:00	6.49	4.43	6.04	8.28
9/29/2023	8:15:00	7.39	5.53	5.65	8.94
9/29/2023	8:30:00	7.61	5.60	6.96	9.35
9/29/2023	8:45:00	8.47	5.85	8.03	9.59
9/29/2023	9:00:00	8.50	5.97	8.75	9.72
9/29/2023	9:15:00	8.85	5.94	9.02	9.83
9/29/2023	9:30:00	8.84	6.09	9.21	9.85
9/29/2023	9:45:00	8.98	6.25	9.49	9.88
9/29/2023	10:00:00	9.07	6.37	9.45	9.82
9/29/2023	10:15:00	9.10	6.34	9.53	9.75
9/29/2023	10:30:00	9.07	6.39	9.50	9.78
9/29/2023	10:45:00	9.11	6.38	9.55	9.86
9/29/2023	11:00:00	9.14	6.32	9.52	9.85
9/29/2023	11:15:00	9.18	6.35	9.47	9.82
9/29/2023	11:30:00	9.18	6.30	9.57	9.81
9/29/2023	11:45:00	9.12	6.29	9.43	9.74

Note: Data has not been validated

**September 24 - 30, 2023**

Date	Time	DO (mg/L)			
		Ambient	W TB4	S 3SB	S CSB
9/29/2023	12:00:00	9.14	6.24	9.47	9.64
9/29/2023	12:15:00	9.15	6.18	9.47	9.72
9/29/2023	12:30:00	9.16	6.14	9.44	9.54
9/29/2023	12:45:00	9.16	6.26	9.56	9.37
9/29/2023	13:00:00	9.18	6.34	9.44	9.33
9/29/2023	13:15:00	9.15	6.48	9.38	9.27
9/29/2023	13:30:00	9.16	6.40	9.22	9.21
9/29/2023	13:45:00	9.11	6.27	9.21	9.24
9/29/2023	14:00:00	9.13	6.19	9.05	9.23
9/29/2023	14:15:00	9.10	6.16	9.07	9.30
9/29/2023	14:30:00	9.08	6.12	9.04	9.23
9/29/2023	14:45:00	9.00	6.09	8.97	9.13
9/29/2023	15:00:00	8.95	6.06	8.87	9.15
9/29/2023	15:15:00	8.98	5.97	8.84	9.11
9/29/2023	15:30:00	8.97	6.01	8.86	9.09
9/29/2023	15:45:00	8.96	5.98	8.75	9.04
9/29/2023	16:00:00	8.88	5.91	8.58	9.06
9/29/2023	16:15:00	8.82	5.67	8.70	9.08
9/29/2023	16:30:00	8.76	5.43	8.50	9.02
9/29/2023	16:45:00	8.77	5.21	8.33	8.85
9/29/2023	17:00:00	8.71	5.58	8.32	8.93
9/29/2023	17:15:00	8.45	5.61	8.31	8.83
9/29/2023	17:30:00	8.33	5.66	8.52	8.83
9/29/2023	17:45:00	8.55	5.63	8.46	8.71
9/29/2023	18:00:00	8.54	5.60	8.36	8.74
9/29/2023	18:15:00	8.51	5.32	8.28	8.83
9/29/2023	18:30:00	8.26	5.50	8.45	8.66
9/29/2023	18:45:00	8.22	5.33	8.50	8.60
9/29/2023	19:00:00	8.17	5.41	8.46	8.62
9/29/2023	19:15:00	8.09	5.37	8.40	8.54
9/29/2023	19:30:00	7.68	5.22	8.33	8.27
9/29/2023	19:45:00	7.63	5.18	7.98	8.01
9/29/2023	20:00:00	7.33	4.75	7.89	7.59
9/29/2023	20:15:00	7.25	4.67	7.88	6.84
9/29/2023	20:30:00	7.04	4.67	6.87	6.72
9/29/2023	20:45:00	6.69	4.64	7.39	6.38
9/29/2023	21:00:00	6.59	4.32	6.51	6.13
9/29/2023	21:15:00	6.29	4.47	6.38	6.21
9/29/2023	21:30:00	6.28	4.21	6.29	5.94
9/29/2023	21:45:00	6.47	4.21	6.13	5.97
9/29/2023	22:00:00	6.45	4.17	6.25	5.78
9/29/2023	22:15:00	6.19	4.23	5.92	5.81
9/29/2023	22:30:00	5.87	4.09	5.78	5.78
9/29/2023	22:45:00	5.73	4.06	5.57	5.23
9/29/2023	23:00:00	5.82	3.91	5.64	5.40
9/29/2023	23:15:00	5.82	3.95	5.66	5.43
9/29/2023	23:30:00	5.76	3.83	5.69	5.23
9/29/2023	23:45:00	5.64	3.61	5.42	5.17

Note: Data has not been validated

**September 24 - 30, 2023**

Date	Time	DO (mg/L)			
		Ambient	W TB4	S 3SB	S CSB
9/30/2023	0:00:00	5.40	3.61	5.46	5.12
9/30/2023	0:15:00	5.63	3.52	5.52	5.12
9/30/2023	0:30:00	5.57	2.89	5.35	5.04
9/30/2023	0:45:00	5.31	3.19	5.14	4.99
9/30/2023	1:00:00	5.19	3.17	4.99	4.93
9/30/2023	1:15:00	5.07	3.28	4.83	4.91
9/30/2023	1:30:00	4.91	2.95	4.72	4.83
9/30/2023	1:45:00	4.70	3.03	4.75	4.69
9/30/2023	2:00:00	4.52	2.97	4.74	4.67
9/30/2023	2:15:00	4.39	2.63	4.57	4.59
9/30/2023	2:30:00	4.34	2.57	4.36	4.57
9/30/2023	2:45:00	4.13	2.48	4.40	4.86
9/30/2023	3:00:00	3.91	2.24	4.37	4.49
9/30/2023	3:15:00	3.84	2.56	4.19	4.58
9/30/2023	3:30:00	3.62	2.33	4.10	4.36
9/30/2023	3:45:00	3.49	2.28	3.97	4.18
9/30/2023	4:00:00	3.37	2.60	3.86	4.09
9/30/2023	4:15:00	3.39	2.79	4.00	4.34
9/30/2023	4:30:00	3.36	2.96	4.26	4.50
9/30/2023	4:45:00	3.30	3.21	4.07	4.40
9/30/2023	5:00:00	3.26	3.00	4.27	4.35
9/30/2023	5:15:00	3.23	2.87	4.62	4.36
9/30/2023	5:30:00	3.14	2.78	4.45	4.28
9/30/2023	5:45:00	3.08	2.70	4.34	4.18
9/30/2023	6:00:00	3.10	2.56	4.28	4.36
9/30/2023	6:15:00	3.06	2.26	3.95	4.27
9/30/2023	6:30:00	2.99	2.51	4.07	4.45
9/30/2023	6:45:00	3.05	3.08	4.04	4.28
9/30/2023	7:00:00	3.18	2.79	4.29	4.36
9/30/2023	7:15:00	3.14	2.82	4.42	4.27
9/30/2023	7:30:00	3.23	3.29	4.57	4.34
9/30/2023	7:45:00	3.66	2.88	4.50	4.34
9/30/2023	8:00:00	4.00	3.00	4.56	4.32
9/30/2023	8:15:00	4.06	2.93	4.31	4.51
9/30/2023	8:30:00	4.15	2.93	4.47	4.61
9/30/2023	8:45:00	3.68	2.82	4.41	4.45
9/30/2023	9:00:00	3.43	2.84	4.31	4.41
9/30/2023	9:15:00	3.60	2.93	4.39	4.52
9/30/2023	9:30:00	3.98	2.95	4.34	4.52
9/30/2023	9:45:00	3.74	2.85	4.40	4.44
9/30/2023	10:00:00	3.29	2.54	4.62	4.48
9/30/2023	10:15:00	3.67	3.00	4.41	4.40
9/30/2023	10:30:00	3.30	2.92	4.40	4.43
9/30/2023	10:45:00	3.27	2.77	4.36	4.51
9/30/2023	11:00:00	3.34	2.98	4.36	4.54
9/30/2023	11:15:00	3.42	2.85	4.47	4.49
9/30/2023	11:30:00	3.86	2.87	4.37	4.47
9/30/2023	11:45:00	3.87	2.54	4.38	4.52

Note: Data has not been validated

**September 24 - 30, 2023**

Date	Time	DO (mg/L)			
		Ambient	W TB4	S 3SB	S CSB
9/30/2023	12:00:00	3.94	2.81	4.30	4.40
9/30/2023	12:15:00	3.99	2.88	4.54	4.58
9/30/2023	12:30:00	4.20	2.84	4.34	4.59
9/30/2023	12:45:00	4.00	2.78	4.47	4.35
9/30/2023	13:00:00	3.87	2.72	4.58	4.35
9/30/2023	13:15:00	3.78	2.96	4.34	4.23
9/30/2023	13:30:00	3.70	2.90	4.33	4.29
9/30/2023	13:45:00	3.60	2.93	4.41	4.30
9/30/2023	14:00:00	3.45	2.95	4.20	4.31
9/30/2023	14:15:00	3.32	2.90	4.16	4.20
9/30/2023	14:30:00	3.31	2.93	3.68	4.28
9/30/2023	14:45:00	3.44	2.59	4.14	4.17
9/30/2023	15:00:00	3.43	2.57	4.32	4.33
9/30/2023	15:15:00	3.25	2.42	4.01	4.15
9/30/2023	15:30:00	3.25	2.50	4.27	4.29
9/30/2023	15:45:00	3.50	2.56	4.06	4.04
9/30/2023	16:00:00	3.43	3.08	4.05	4.17
9/30/2023	16:15:00	3.31	3.30	4.01	4.17
9/30/2023	16:30:00	3.27	3.32	4.56	4.03
9/30/2023	16:45:00	3.27	3.15	4.05	4.03
9/30/2023	17:00:00	3.23	3.03	4.33	4.06
9/30/2023	17:15:00	3.34	3.15	4.12	4.11
9/30/2023	17:30:00	3.41	3.07	4.32	3.95
9/30/2023	17:45:00	3.32	2.96	4.20	4.04
9/30/2023	18:00:00	3.39	2.91	4.25	3.88
9/30/2023	18:15:00	3.44	3.15	4.20	3.93
9/30/2023	18:30:00	3.44	3.15	4.15	3.77
9/30/2023	18:45:00	3.41	3.13	4.41	3.87
9/30/2023	19:00:00	3.42	3.03	4.23	3.98
9/30/2023	19:15:00	3.84	2.88	4.18	3.97
9/30/2023	19:30:00	3.56	2.88	4.10	3.22
9/30/2023	19:45:00	3.57	2.61	4.26	3.93
9/30/2023	20:00:00	3.48	2.48	3.97	3.85
9/30/2023	20:15:00	3.42	2.53	4.07	3.44
9/30/2023	20:30:00	3.37	2.49	3.99	3.78
9/30/2023	20:45:00	3.28	2.51	4.31	3.92
9/30/2023	21:00:00	3.13	2.45	4.17	3.77
9/30/2023	21:15:00	3.36	2.22	4.32	3.78
9/30/2023	21:30:00	3.36	2.50	4.05	3.63
9/30/2023	21:45:00	3.52	2.65	4.10	3.60
9/30/2023	22:00:00	3.32	2.58	4.11	3.67
9/30/2023	22:15:00	3.34	2.53	4.09	3.64
9/30/2023	22:30:00	3.38	2.43	3.85	3.57
9/30/2023	22:45:00	3.40	2.59	3.80	3.66
9/30/2023	23:00:00	3.44	2.47	3.87	3.71
9/30/2023	23:15:00	3.40	2.52	3.46	3.58
9/30/2023	23:30:00	3.42	2.43	3.90	3.61
9/30/2023	23:45:00	3.42	2.50	3.64	--

Note: Data has not been validated