

**GOWANUS CANAL SUPERFUND SITE
RTA1 REMEDIAL CONSTRUCTION
Water Quality Monitoring Weekly Data Summary**

PERIOD: February 5 – February 9, 2024

Date of Report: February 13, 2024

Report Contents

- Scope of Monitoring
- Report of Exceedances
- Turbidity Buoy Data
- Dissolved Oxygen Monitoring Data
- Summary of Visual Observations

Prepared by

B&B Engineers & Geologists 
of new york, p.c.

an affiliate of Geosyntec Consultants

1255 Roberts Blvd, Suite 200
Kennesaw, GA 30144
Project Number JR0289A

1. SCOPE OF MONITORING

1.1 Initial Buoy Locations

In accordance with the Water Quality Monitoring Plan for In-waterway Construction Activities (WQMP) three turbidity buoys were deployed to monitor turbidity related to dredging activities. One turbidity buoy was deployed just south of the 3rd Street Bridge outside of the air curtain and traditional turbidity curtain and was referred to as the 3rd Street Sentinel Buoy. A second turbidity buoy was deployed just south of Carroll St Bridge to monitor dredging activities north of Carroll Street Bridge and was referred to as the Carroll Street Sentinel Buoy. The third turbidity buoy was deployed in the Fourth Street Turning Basin (TB4) in order to monitor background turbidity unaffected by in-water construction activities and was referred to as the Ambient Buoy.

Each turbidity buoy was initially equipped with a YSI EXO3 water quality meter with optical turbidity sensor. The buoys were field calibrated and programmed such that readings were collected every 15 minutes. After each measurement, the turbidity data were transmitted to a File Transfer Portal (FTP) site via telemetry.

1.2 Summary of Monitoring Adjustments during Construction

- On January 22, 2021, prior to dredging north of the Union Street Bridge, a fourth turbidity buoy was deployed just south of the Union Street Bridge and was referred to as the Union Street Sentinel Buoy. This fourth turbidity buoy was removed prior to the start of pipe pile installation.
- On Wednesday, September 22, 2021, the Carroll Street Sentinel Buoy was relocated to the west side of the canal where Degraw Street intersects the canal to monitor cofferdam removal activities conducted in the vicinity of the Flushing Tunnel. This buoy was renamed the Degraw Street Sentinel Buoy during cofferdam removal activities.
- On October 14, 2021, the Degraw Street Sentinel Buoy was removed from the canal for servicing. On October 20, 2021, the Degraw Street Sentinel Buoy was redeployed to its position south of the Carroll Street Bridge and was renamed to the Carroll Street Sentinel Buoy.
- On November 15, 2021, the Carroll Street Sentinel Buoy was moved to the Union Street Bridge and renamed the Union Street Sentinel Buoy. On December 3, 2021, the Union Street Buoy was removed from the canal for servicing and re-deployed at 3rd Street Bridge in preparation for the resumption of ISS operations. On December 8, 2021, a sentinel buoy was re-deployed just south of the Carroll Street Bridge.
- Since December 8, 2021, the sentinel buoy deployed at the northern-most portion of the canal has alternated positioning between the Union Street Bridge and Carroll Street Bridge locations based on the in-canal construction activities being conducted at any given time.
- On January 9, 2023, the Carroll Street Sentinel Buoy was moved to the Third Street Bridge location and renamed the Third Street Sentinel Buoy. Additionally, the former Third Street Sentinel Buoy was removed from the canal for servicing.

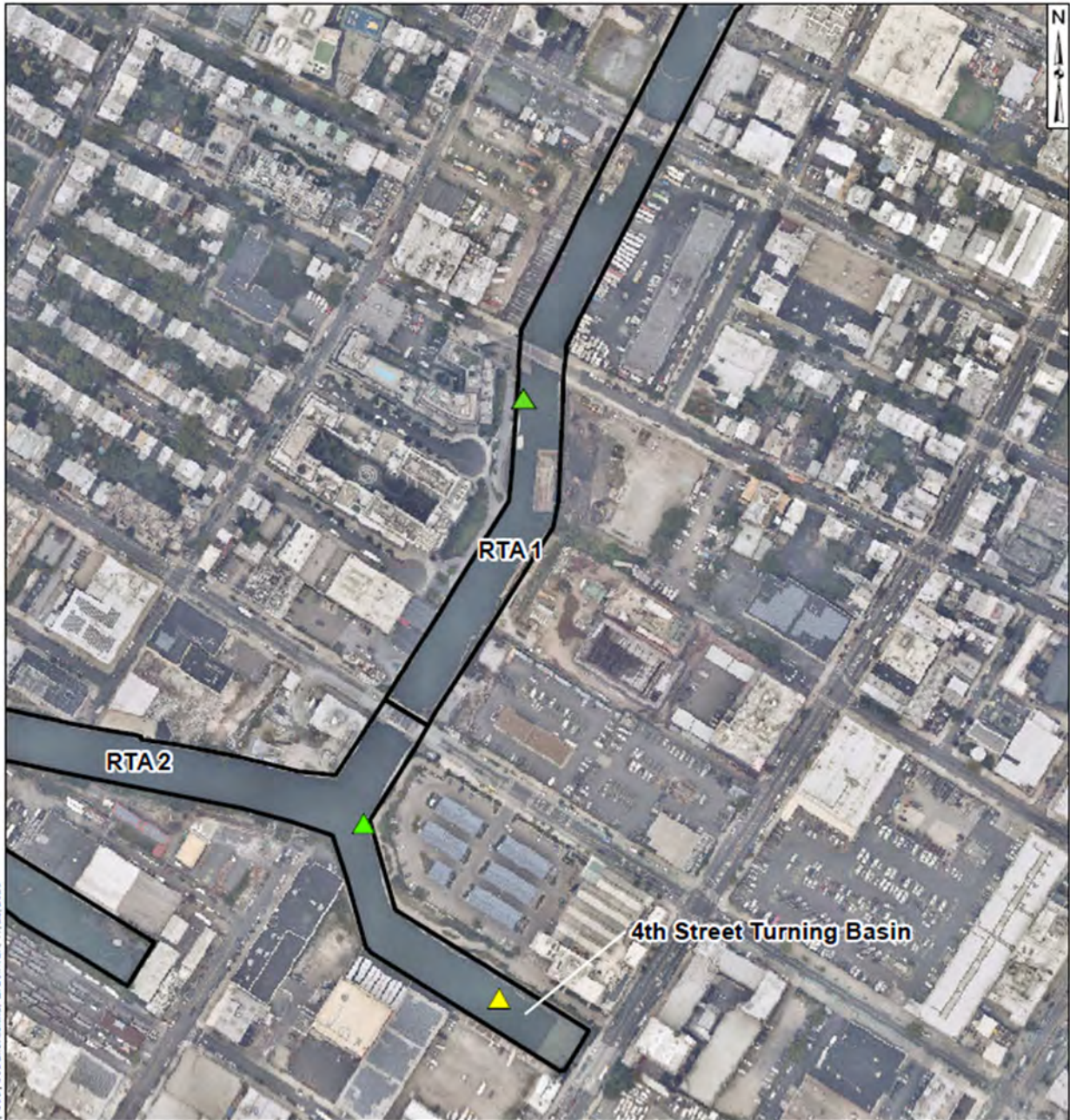
- On February 6, 2023, the newly serviced Third Street Sentinel Buoy was reinstalled at Third Street Bridge, and the former Carroll Street Sentinel Buoy was reinstalled at Carroll Street Bridge.
- The Ambient Buoy was removed from service on Friday, February 17, 2023, due to a faulty communications system. Following investigation into the cause of the fault and the appropriate repairs made, the Ambient Buoy was returned to service on Thursday, April 13, 2023. Due to similar issues, the Ambient Buoy was removed from service again on Monday, April 24, 2023, before being redeployed on Friday, May 12, 2023, and again removed from service on Monday, May 15, 2023, before being redeployed on Monday, June 12, 2023.
- On Thursday April 13, 2023, the Carroll Street Sentinel Buoy was assessed to be within 100ft of in-canal construction activities being conducted at Carroll Street Bridge, and consequently was repositioned to the North Third Street Sentinel Buoy location.
- Data from the Third Street Sentinel Buoy was not reported from Thursday June 1, 2023 to June 2, 2023 due to a power failure and/or faulty communications system preventing transmission of readings. The Third Street Sentinel Buoy was returned to service with data collection resuming on June 5, 2023.
- On Wednesday, July 26, 2023, a fourth monitoring buoy was deployed just north of the Union Street Bridge to monitor dissolved oxygen (DO) in RTA1.
- On Tuesday, September 19, 2023, the fourth monitoring buoy (originally deployed north of the Union Street Bridge to monitor DO) was moved to just south of the Carroll Street Bridge due to ongoing in-waterway construction activities within 100 feet. In addition to dissolved oxygen, this served as an additional sentinel buoy and was referred to as the South Carroll Street Bridge Sentinel Buoy.
- On Thursday, November 2, 2023, the monitoring buoy deployed just south of the Third Street Bridge was removed from the canal to conduct maintenance and necessary repairs.
- On Monday, November 13, 2023, the monitoring buoy most recently deployed south of the Carroll Street Bridge was moved to just south of the Union Street Bridge due to ongoing in-waterway construction activities within 100 feet. In addition to dissolved oxygen, this served as an additional sentinel buoy and was referred to as the South Union Street Bridge Sentinel Buoy.
- On Tuesday, December 19, 2023, the monitoring buoy most recently deployed south of the Union Street Bridge was moved back to just south of the Carroll Street Bridge due to ongoing in-waterway construction activities within 100 feet of Union Street Bridge. This will again be referred to as the South Carroll Street Bridge Sentinel Buoy, and in addition to turbidity, will continue to monitor dissolved oxygen.

1.3 Current Reporting Period Scope of Monitoring

For the week of February 5, 2024, three turbidity buoys were deployed consisting of the Ambient Turbidity Buoy located in the eastern end of TB4, the West TB4 Sentinel Buoy located just outside of any sediment and floatables controls at the southern end of RTA1, and the South Carroll Street Bridge Sentinel Buoy located just south of the Carroll Street Bridge. Additionally, DO measurements were recorded by the turbidity buoys.

All readings from buoys were transmitted via telemetry at 15-minute intervals. The instrument used to collect turbidity and DO from the buoys is an In-Situ VuLink (telemetry) and AquaTroll500 (sonde), equipped with optical sensors capable of reading turbidity levels with an accuracy of +/-0.5 NTU and DO levels with an accuracy of +/-0.1 mg/L.

Visual observations of turbidity and sheen are summarized in Section 5.



\\fileserver\eng\Gowanus_FR\K13_G08\mes\Gowanus_Canal_L_Wide\Turbidity_Buoy_Locations.mxd; akoufmarc; 11/23/2020

- Legend**
- ▲ Ambient Buoy
 - ▲ Sentinel Buoy
 - RTA Boundary



**Water Quality Monitoring
Buoy Locations**

Gowanus Canal, Brooklyn, NY

B&B Engineers & Geologists
of new york, p.c.

an affiliate of Geosyntec Consultants

Brooklyn, NY

November 2023

Figure

1

2. REPORT OF EXCEEDANCES

No exceedances due to remedial construction-related activities to the quantitative trigger or action criteria were observed during the reporting period.

- **Trigger criterion** – Any of the following:
 - The rolling average of the relevant sentinel buoy turbidity measurements over a one-hour period exceeds the rolling average of the ambient buoy turbidity measurements by 20 NTU excluding any eliminated outlier measurements and in-waterway construction activities cannot be immediately excluded as the source following consultation with EPA; or
 - Either an oil sheen or a turbidity plume is visually observed at the relevant sentinel buoy and in-waterway construction activities are readily identified as the source.
- **Action criterion** – Any of the following:
 - The rolling average of the turbidity measurements of the sentinel buoy outside of RTA1 over a one-hour period exceeds the rolling average of the ambient buoy turbidity measurements by 40 NTU excluding any eliminated outlier measurements and in-waterway construction activities cannot be immediately excluded as the source following consultation with EPA; or
 - Either an oil sheen or a turbidity plume is visually observed outside of RTA1 and any deployed engineering controls and in-waterway construction activities are readily identified as the source.

An outlier is defined as a reading that is outside the range of 50 to 200 percent of the average of the three previous readings. In addition, to be considered an outlier, the subsequent reading must return to a range of 75 to 133 percent of the average of the three readings preceding the outlier.

2.1 Response to Criteria Exceedances

The trigger level criterion serves to provide early notification to the contractor of construction activities that may lead to an exceedance of the action level criterion. In the event of an exceedance to the trigger criterion, the contractor will not be stopped, and the contractor will be directed to investigate the source of the exceedance and evaluate Best Management Practices (BMPs). In the event of an exceedance to the action level criterion, in-waterway construction activities may be slowed or temporarily suspended as necessary while the contractor investigates the source of the exceedance and appropriate mitigation and corrective measures are determined. A more detailed description of responses to exceedances of the trigger and action level criteria is provided in Section 4.2 of the WQMP.

No exceedances due to remedial construction-related activities to the quantitative trigger or action criteria were observed during the reporting period.

3. TURBIDITY BUOY DATA

The following section provides turbidity data for the sentinel and ambient turbidity buoys from 7 AM to 6 PM from February 5 – February 9, 2024.

No exceedances due to remedial construction-related activities to the quantitative trigger or action criteria were observed during the reporting period.

Elevated turbidity readings above the quantitative trigger criterion occurred at the South Carroll Street Sentinel Buoy at approximately 7:00 PM on Monday of the reporting period. Turbid conditions were visually observed to be present within multiple areas in and around RTA1 prior to the commencement of remedial construction-related activities on Tuesday of the reporting period. Visual observations related to this event are summarized in Section 5.

Inspection and routine maintenance of the buoys occurred on Monday of the reporting period. All sensors were cleaned upon inspection.

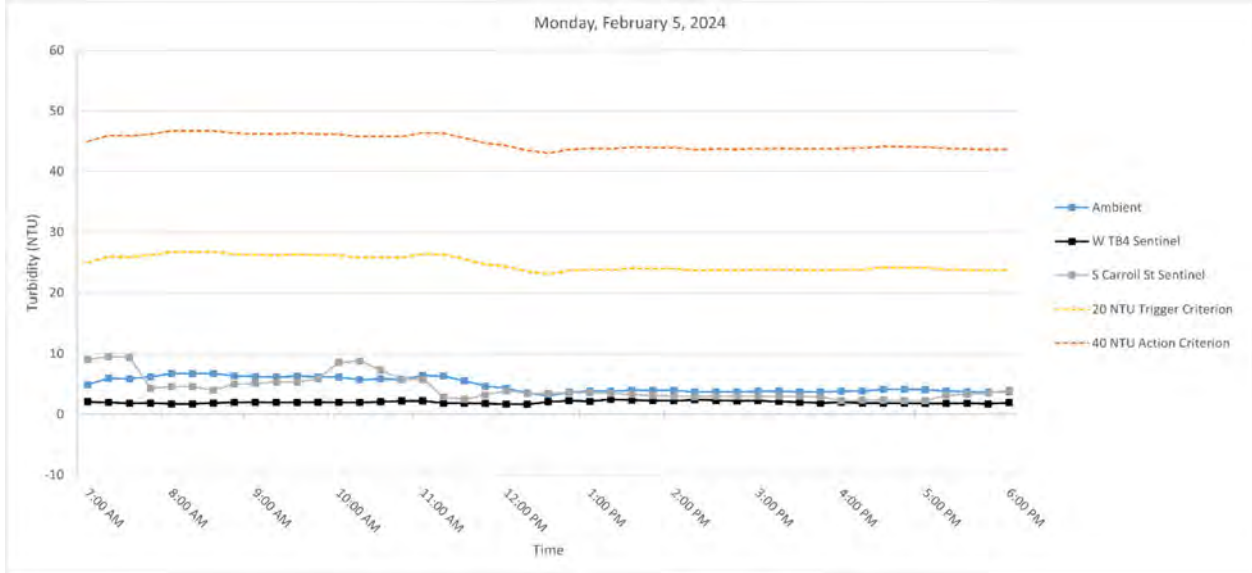
Table 1 below provides a summary of the turbidity data for the reporting period.

Date	Average Rolling Average Difference (NTU)		Maximum Rolling Average Difference (NTU)	
	W TB4 - Ambient	S Carroll St - Ambient	W TB4 - Ambient	S Carroll St - Ambient
Monday, February 5, 2024	-2.80	-0.49	-0.97	4.12
Tuesday, February 6, 2024	-0.62	1.53	2.51	5.88
Wednesday, February 7, 2024	-0.55	0.61	5.27	3.19
Thursday, February 8, 2024	-1.84	-0.28	-0.99	1.37
Friday, February 9, 2024	-1.82	1.88	1.41	4.21

Table 1. Daily average and maximum differences between the rolling average turbidity readings from RTA1 sentinel buoys and the ambient buoy between 7 AM and 6 PM.

3.1 Monday, February 5, 2024

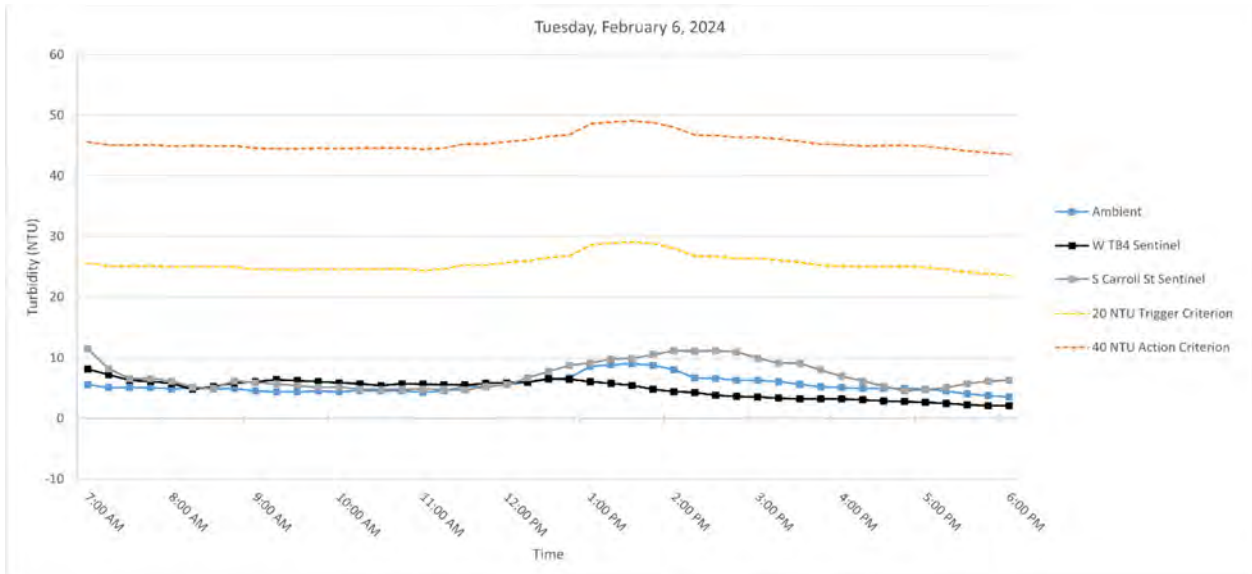
Figure 3. Hourly rolling average turbidity readings on Monday, February 5, 2024, from 7 AM to 6 PM.



Note: No exceedances were observed. Outlier turbidity readings above 20 NTU were detected at the South Carroll Street Buoy.

3.2 Tuesday, February 6, 2024

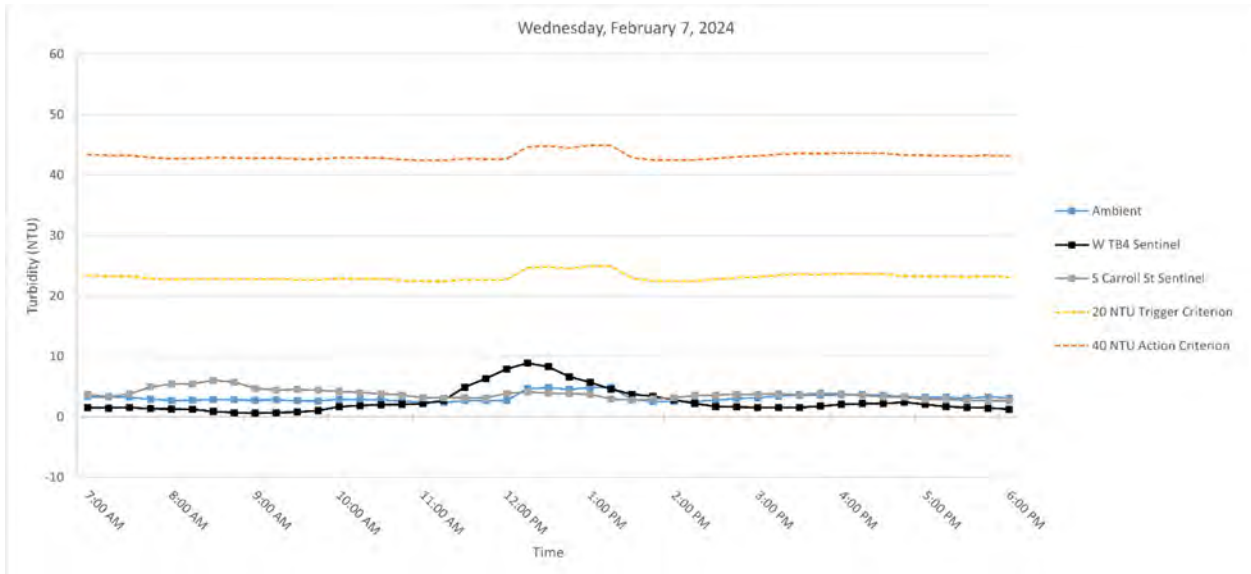
Figure 3. Hourly rolling average turbidity readings on Tuesday, February 6, 2024, from 7 AM to 6 PM.



Note: Elevated turbidity readings were observed at the Carroll Street Sentinel Buoy beginning at approximately 7:00 PM the previous night. No exceedances due to remedial construction activities were observed. No outlier turbidity readings above 20 NTU were detected at any of the buoys.

3.3 Wednesday, February 7, 2024

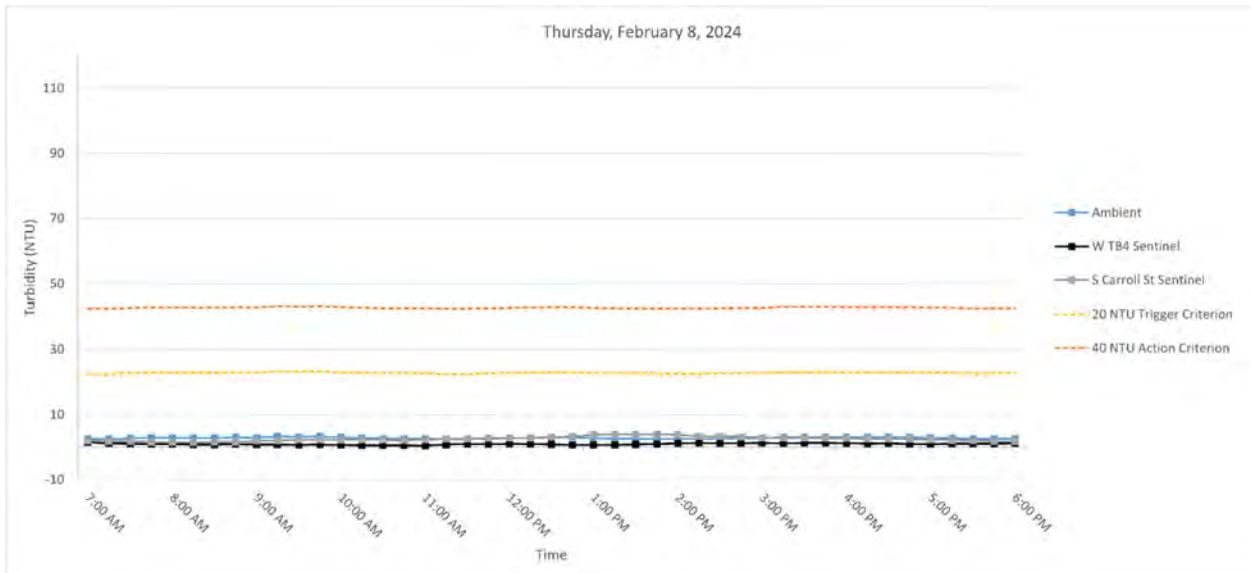
Figure 4. Hourly rolling average turbidity readings on Wednesday, February 7, 2024, from 7 AM to 6 PM.



Note: No exceedances were observed. No outlier turbidity readings above 20 NTU were detected at any of the buoys.

3.4 Thursday, February 8, 2024

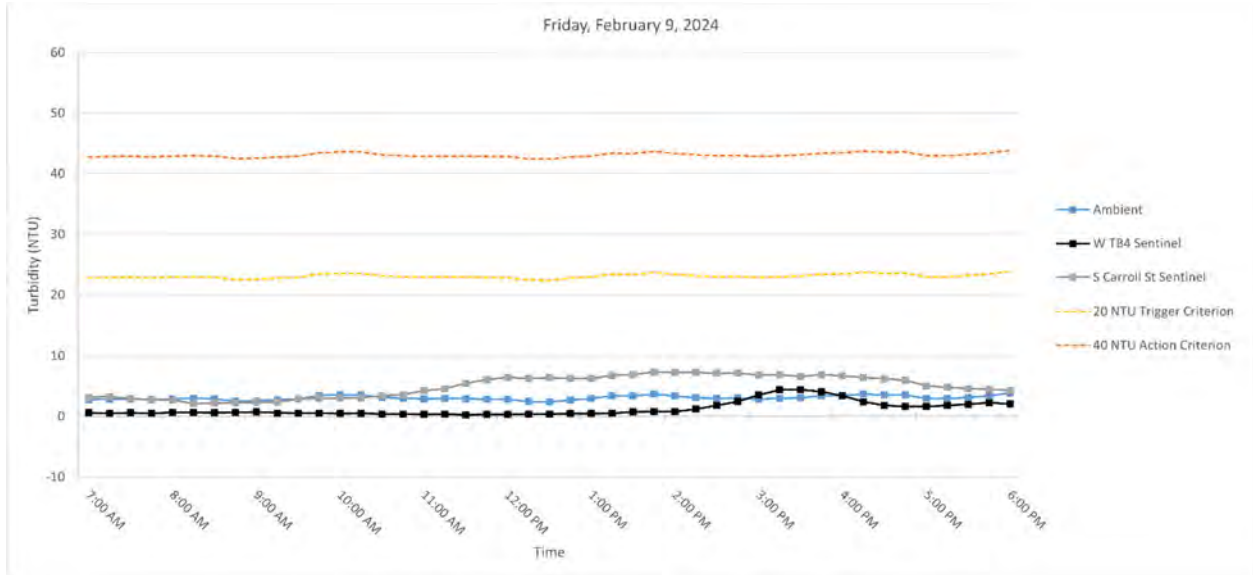
Figure 5. Hourly rolling average turbidity readings on Thursday, February 8, 2024, from 7 AM to 6 PM.



Note: No exceedances were observed. No outlier turbidity readings above 20 NTU were detected at any of the buoys.

3.5 Friday, February 9, 2024

Figure 6. Hourly rolling average turbidity readings on Friday, February 9, 2024, from 7 AM to 6 PM.



Note: No exceedances were observed. Outlier turbidity readings above 20 NTU were detected at the Ambient Buoy.

4. DISSOLVED OXYGEN MONITORING DATA

Dissolved oxygen measured at the monitoring buoys throughout the reporting period is provided in Appendix B and summarized below:

- Ambient
 - Average = 7.23 (+/-0.1) mg/L
 - Min = 3.12 (+/-0.1) mg/L on Tuesday February 6, 2024
 - Max = 13.26 (+/-0.1) mg/L on Monday February 5, 2024

- West Turning Basin 4 (W TB4)
 - Average = 7.98 (+/-0.1) mg/L
 - Min = 4.46 (+/-0.1) mg/L on Tuesday February 6, 2024
 - Max = 10.89 (+/-0.1) mg/L on Sunday February 4, 2024

- South Carroll Street Bridge (S CSB)
 - Average = 5.83 (+/-0.1) mg/L
 - Min = 0.68 (+/-0.1) mg/L on Monday February 5, 2024
 - Max = 9.62 (+/-0.1) mg/L on Sunday February 4, 2024

5. SUMMARY OF VISUAL OBSERVATIONS

Visual indications of elevated turbidity were periodically observed during the reporting period attributable to capping activities, most notably on Friday of the reporting period when a surface foam was generated during grout placement for structural concrete and CLSM installation in the middle pool (i.e. between Union Street Bridge and Carroll Street Bridge). No sheens attributable to in-canal work operations were observed above background conditions. No turbid or sheen discharges were observed during the reporting period from storm water outfalls.

Elevated turbidity was visually observed within multiple areas in and around RTA1 prior to the commencement of remedial construction-related activities on Tuesday of the reporting period. These observations correlate with elevated turbidity readings in the immediate vicinity of the South Carroll Street Sentinel Buoy, which began the previous night at approximately 7:00 PM on Monday of the reporting period. Turbidity buoy data related to this event is summarized in Section 3. This observation is considered similar to the elevated turbidity observation reported on Tuesday, January 23, 2024 (Week 179).

Photographs depicting conditions relevant to these events are shown below.

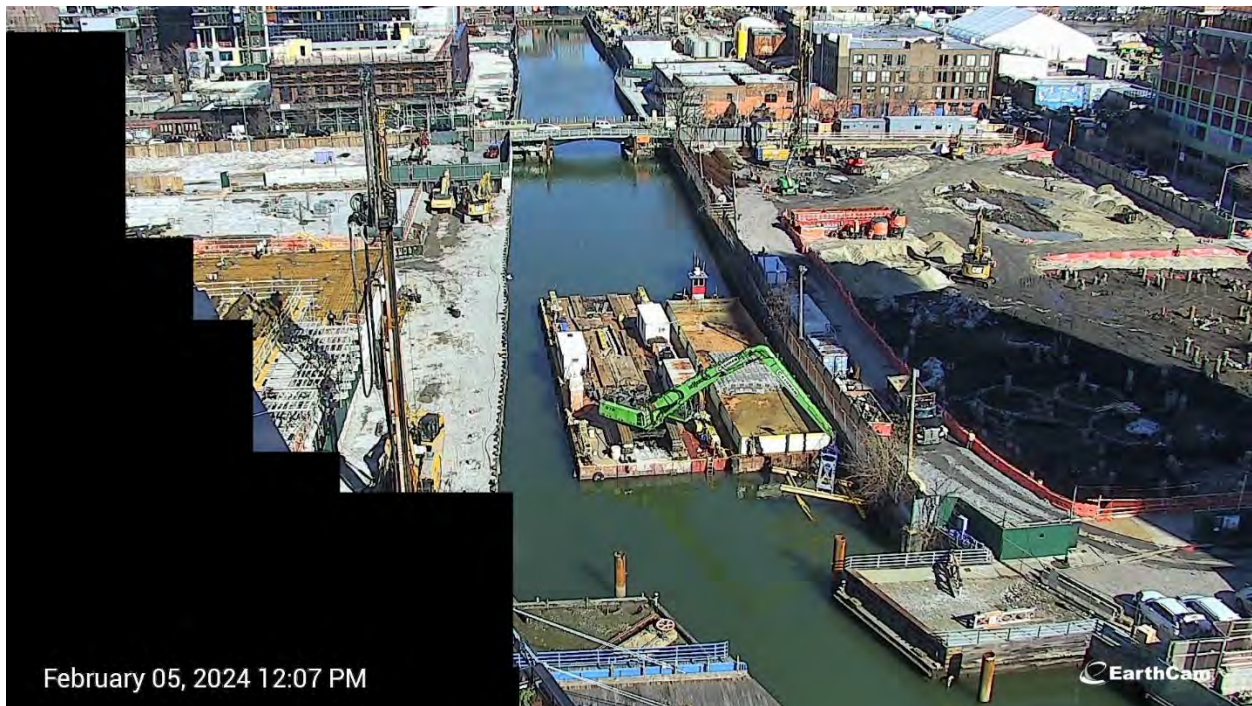


Figure 7. RTA1 north of Carroll Street Bridge at 12:00 PM on Monday, February 5, 2024 (the day before the reported observations of elevated turbidity).

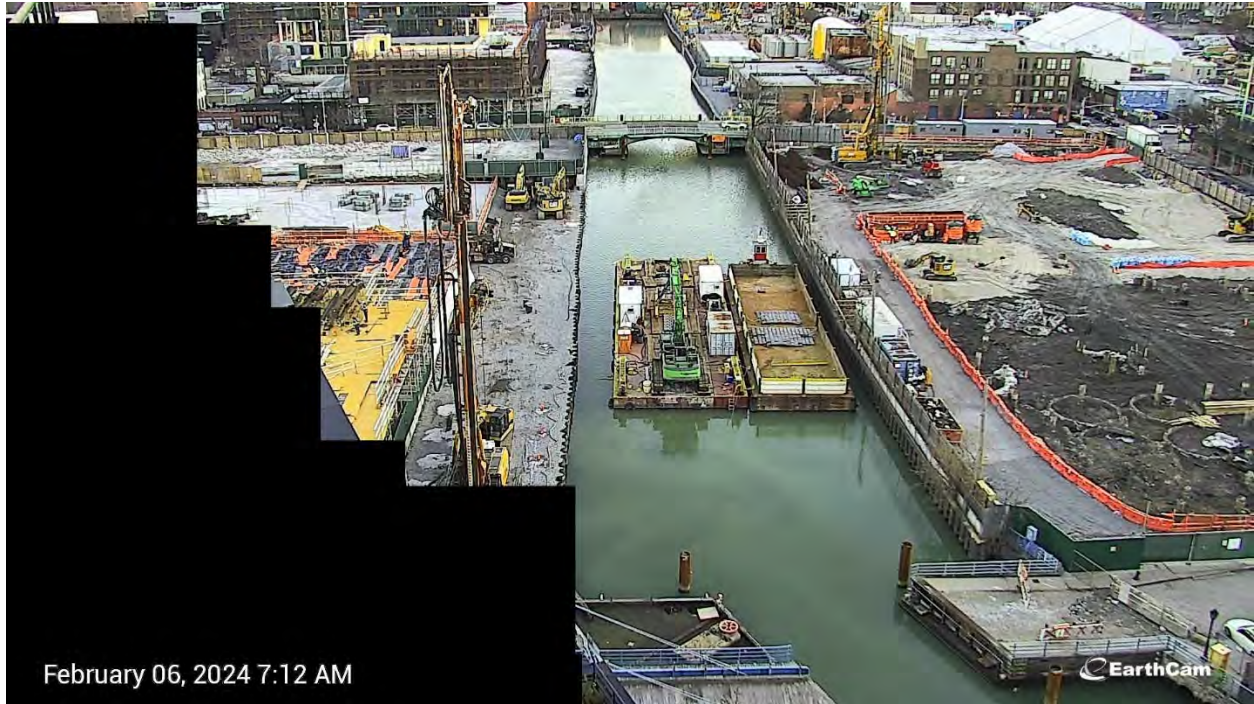


Figure 8. RTA1 north of Carroll Street Bridge at 7:15 AM on Tuesday, February 6, 2024 (elevated turbidity observed prior to any remedial construction activities).

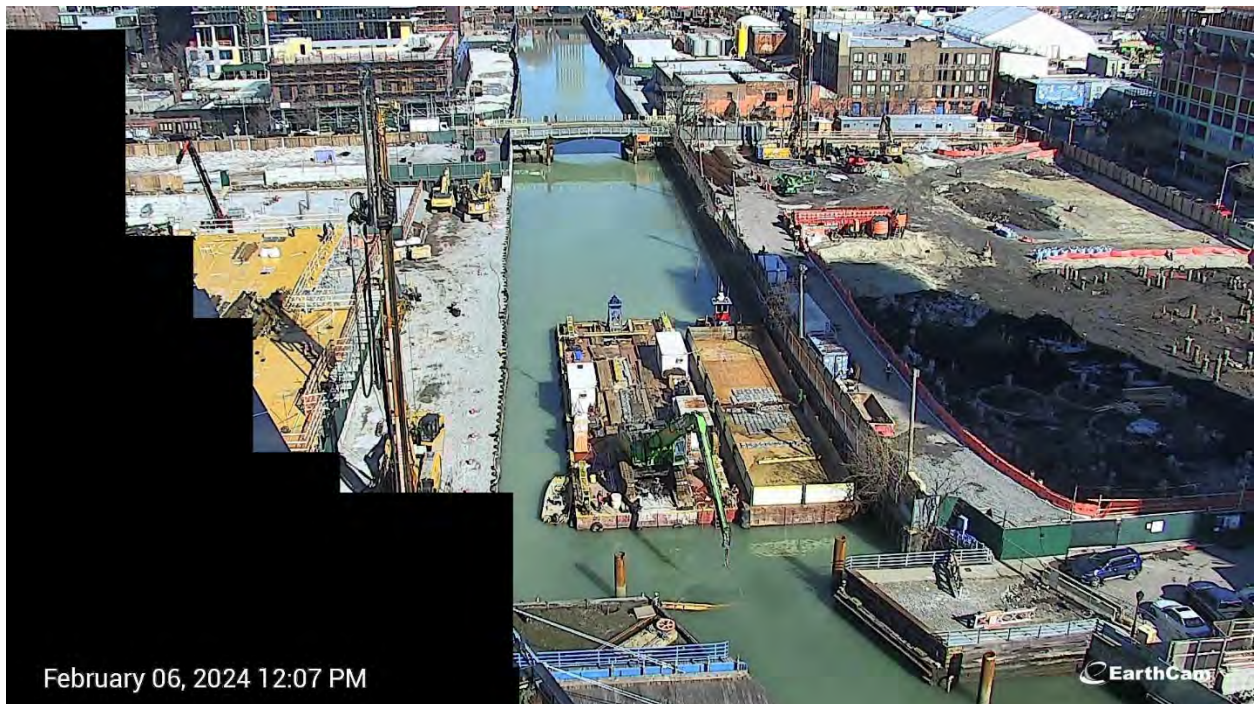


Figure 9. RTA1 north of Carroll Street Bridge at 12:00 PM on Tuesday, February 6, 2024 (elevated turbidity observed throughout the day).



Figure 10. Observations of elevated turbidity between Carroll Street Bridge and Union Street Bridge at 12:45 PM on Tuesday, February 6, 2024 at 12:00 PM.



Figure 11. Discharge from between the sheetpile bulkhead of the 383 Carroll Street property and the stone bulkhead at Carroll Street Bridge, observed the morning of February 7, 2024.



Figure 12. Discharge from between the sheetpile bulkhead of the 383 Carroll Street property and the stone bulkhead at Carroll Street Bridge, observed the morning of February 7, 2024.

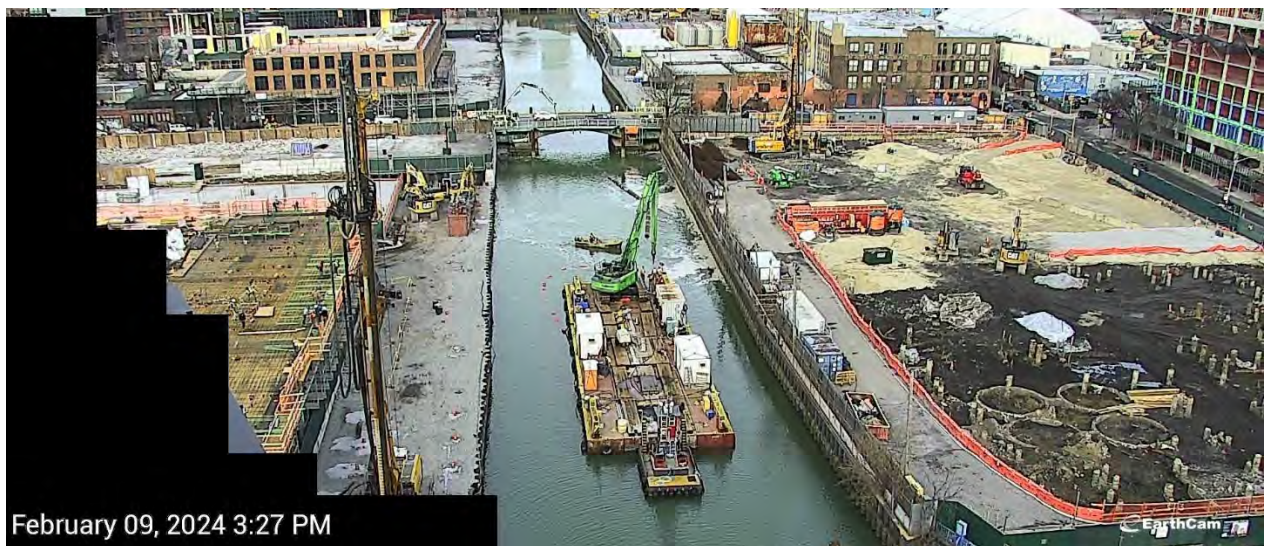


Figure 13. Surface foam generated during grout placement for structural concrete and CLSM installation in the middle pool (i.e. between Union Street Bridge and Carroll Street Bridge), observed on Friday of the reporting period.

APPENDIX A
Turbidity Data Tables

Monday, February 5, 2024

Time	Turbidity (NTU)			Rolling Average Turbidity (NTU)			Difference (NTU)	
	Ambient	W TB4	S Carroll Street	Ambient	W TB4	S Carroll Street	W TB4 - Ambient	S Carroll Street
7:00:00	5.04	1.66	4.59	4.93	2.03	9.05	-2.90	4.12
7:15:00	5.08	1.54	6.19	5.95	1.94	9.54	-4.00	3.59
7:30:00	8.02	1.51	3.64	5.88	1.82	9.39	-4.07	3.50
7:45:00	7.51	1.94	3.46	6.17	1.88	4.32	-4.28	-1.85
8:00:00	7.92	1.93	5.07	6.71	1.71	4.59	-5.00	-2.12
8:15:00	5.03	1.64	--	6.71	1.71	4.59	-5.00	-2.12
8:30:00	5.22	2.33	3.76	6.74	1.87	3.98	-4.87	-2.76
8:45:00	6.08	1.98	7.54	6.35	1.96	4.96	-4.39	-1.40
9:00:00	6.75	2.16	3.94	6.20	2.01	5.08	-4.20	-1.12
9:15:00	7.62	1.76	6.10	6.14	1.97	5.33	-4.17	-0.81
9:30:00	5.94	1.46	--	6.32	1.94	5.33	-4.39	-0.99
9:45:00	4.40	2.77	5.81	6.16	2.03	5.85	-4.14	-0.31
10:00:00	6.01	1.66	18.46	6.15	1.96	8.58	-4.19	2.43
10:15:00	4.63	2.11	4.80	5.72	1.95	8.79	-3.77	3.07
10:30:00	8.20	2.21	0.00	5.84	2.04	7.27	-3.80	1.43
10:45:00	5.58	2.26	0.00	5.77	2.20	5.81	-3.56	0.05
11:00:00	7.62	2.71	5.63	6.41	2.19	5.78	-4.22	-0.63
11:15:00	5.55	0.00	3.78	6.31	1.86	2.84	-4.46	-3.47
11:30:00	0.55	1.98	2.89	5.50	1.83	2.46	-3.67	-3.04
11:45:00	3.97	1.93	3.72	4.65	1.78	3.20	-2.88	-1.45
12:00:00	3.73	1.80	3.34	4.28	1.69	3.87	-2.60	-0.41
12:15:00	3.66	2.53	3.65	3.49	1.65	3.48	-1.84	-0.01
12:30:00	3.24	--	3.62	3.03	2.06	3.44	-0.97	0.41
12:45:00	3.53	2.78	3.63	3.63	2.26	3.59	-1.37	-0.03
13:00:00	4.91	1.42	3.49	3.81	2.13	3.55	-1.68	-0.27
13:15:00	3.52	3.15	2.81	3.77	2.47	3.44	-1.30	-0.33
13:30:00	4.74	1.97	2.71	3.99	2.33	3.25	-1.66	-0.74
13:45:00	2.98	2.17	2.69	3.94	2.30	3.07	-1.64	-0.87
14:00:00	3.59	2.52	3.19	3.95	2.25	2.98	-1.71	-0.97
14:15:00	3.41	2.11	3.06	3.65	2.38	2.89	-1.27	-0.76
14:30:00	3.95	2.80	3.02	3.74	2.31	2.93	-1.42	-0.80
14:45:00	4.52	1.42	3.06	3.69	2.21	3.00	-1.49	-0.69
15:00:00	3.41	2.28	2.49	3.78	2.23	2.96	-1.55	-0.81
15:15:00	3.71	1.84	3.17	3.80	2.09	2.96	-1.71	-0.84
15:30:00	3.18	1.71	2.96	3.75	2.01	2.94	-1.74	-0.81
15:45:00	3.71	2.17	2.69	3.70	1.89	2.87	-1.82	-0.83
16:00:00	4.97	1.84	0.00	3.79	1.97	2.26	-1.82	-1.53
16:15:00	3.64	1.67	2.85	3.84	1.85	2.34	-1.99	-1.51
16:30:00	5.17	1.90	3.13	4.13	1.86	2.33	-2.27	-1.80
16:45:00	3.09	1.53	2.50	4.12	1.82	2.23	-2.29	-1.88
17:00:00	3.48	2.02	2.83	4.07	1.79	2.26	-2.28	-1.81
17:15:00	3.74	1.71	4.43	3.82	1.76	3.15	-2.06	-0.68
17:30:00	3.23	1.99	3.57	3.74	1.83	3.29	-1.91	-0.45
17:45:00	4.67	1.47	4.32	3.64	1.74	3.53	-1.90	-0.11
18:00:00	3.41	2.48	4.67	3.71	1.93	3.96	-1.77	0.25

Tuesday, February 6, 2024

Time	Turbidity (NTU)			Rolling Average Turbidity (NTU)			Difference (NTU)	
	Ambient	W TB4	S Carroll Street	Ambient	W TB4	S Carroll Street	W TB4 - Ambient	S Carroll Street
7:00:00	3.98	10.10	11.23	5.61	8.12	11.49	2.51	5.88
7:15:00	5.14	3.94	6.19	5.09	7.27	8.23	2.18	3.14
7:30:00	4.14	3.79	0.00	5.07	6.33	6.59	1.25	1.51
7:45:00	6.81	5.52	7.48	5.11	6.11	6.65	1.00	1.55
8:00:00	4.46	5.52	6.03	4.91	5.77	6.18	0.87	1.28
8:15:00	4.35	5.20	6.34	4.98	4.79	5.21	-0.19	0.23
8:30:00	4.88	6.38	--	4.93	5.28	4.96	0.36	0.04
8:45:00	4.17	6.68	5.07	4.93	5.86	6.23	0.93	1.30
9:00:00	4.82	6.71	6.11	4.54	6.10	5.89	1.56	1.35
9:15:00	4.05	6.95	5.37	4.46	6.38	5.73	1.93	1.27
9:30:00	4.19	4.56	5.13	4.42	6.26	5.42	1.83	1.00
9:45:00	5.49	5.43	3.98	4.55	6.06	5.14	1.52	0.59
10:00:00	3.73	5.73	5.33	4.46	5.87	5.19	1.42	0.73
10:15:00	5.41	6.17	4.55	4.58	5.77	4.88	1.19	0.30
10:30:00	4.03	5.21	4.94	4.57	5.42	4.79	0.85	0.22
10:45:00	4.31	6.19	5.28	4.60	5.75	4.82	1.15	0.22
11:00:00	4.26	4.97	4.25	4.35	5.65	4.87	1.31	0.52
11:15:00	4.89	5.52	4.95	4.58	5.61	4.79	1.03	0.21
11:30:00	8.90	5.70	3.97	5.28	5.52	4.68	0.24	-0.60
11:45:00	3.87	6.59	7.74	5.24	5.79	5.24	0.55	-0.01
12:00:00	6.22	6.81	7.00	5.63	5.91	5.58	0.29	-0.04
12:15:00	5.76	5.65	10.08	5.93	6.05	6.75	0.12	0.82
12:30:00	7.76	7.96	9.92	6.50	6.54	7.74	0.04	1.24
12:45:00	10.10	5.54	9.21	6.74	6.51	8.79	-0.24	2.05
13:00:00	13.16	4.40	9.52	8.60	6.07	9.15	-2.53	0.54
13:15:00	7.56	5.51	10.33	8.87	5.81	9.81	-3.06	0.94
13:30:00	6.72	4.03	10.49	9.06	5.49	9.89	-3.57	0.83
13:45:00	6.42	4.52	13.19	8.79	4.80	10.55	-3.99	1.76
14:00:00	6.30	3.79	12.37	8.03	4.45	11.18	-3.58	3.15
14:15:00	6.50	3.55	9.30	6.70	4.28	11.14	-2.42	4.44
14:30:00	7.31	3.23	10.64	6.65	3.82	11.20	-2.83	4.55
14:45:00	5.10	3.11	9.35	6.33	3.64	10.97	-2.69	4.65
15:00:00	6.44	4.11	8.05	6.33	3.56	9.94	-2.77	3.61
15:15:00	5.00	2.79	8.51	6.07	3.36	9.17	-2.71	3.10
15:30:00	4.54	2.89	9.10	5.68	3.23	9.13	-2.45	3.45
15:45:00	5.01	3.20	4.94	5.22	3.22	7.99	-2.00	2.77
16:00:00	4.54	3.18	4.32	5.11	3.23	6.98	-1.87	1.88
16:15:00	5.59	3.38	4.10	4.94	3.09	6.19	-1.85	1.26
16:30:00	5.15	1.81	4.17	4.97	2.89	5.33	-2.07	0.36
16:45:00	4.80	2.42	5.31	5.02	2.80	4.57	-2.22	-0.45
17:00:00	4.13	2.49	5.95	4.84	2.66	4.77	-2.19	-0.07
17:15:00	2.99	2.37	5.87	4.53	2.50	5.08	-2.04	0.55
17:30:00	3.28	2.00	7.38	4.07	2.22	5.74	-1.85	1.67
17:45:00	3.77	1.53	6.35	3.80	2.16	6.17	-1.63	2.38
18:00:00	--	2.22	6.04	3.54	2.12	6.32	-1.42	2.78

Wednesday, February 7, 2024

Time	Turbidity (NTU)			Rolling Average Turbidity (NTU)			Difference (NTU)	
	Ambient	W TB4	S Carroll Street	Ambient	W TB4	S Carroll Street	W TB4 - Ambient	S Carroll Street
7:00:00	4.16	1.02	3.08	3.38	1.51	3.69	-1.87	0.31
7:15:00	2.07	1.81	2.49	3.26	1.46	3.37	-1.79	0.11
7:30:00	2.75	1.55	6.73	3.24	1.56	3.79	-1.69	0.55
7:45:00	2.56	1.13	8.87	2.88	1.37	4.95	-1.51	2.07
8:00:00	2.02	0.98	5.88	2.71	1.30	5.41	-1.41	2.70
8:15:00	4.26	0.72	3.46	2.73	1.24	5.49	-1.49	2.75
8:30:00	2.70	0.00	5.31	2.86	0.88	6.05	-1.98	3.19
8:45:00	2.51	0.58	5.25	2.81	0.68	5.75	-2.13	2.94
9:00:00	2.30	0.81	3.73	2.76	0.62	4.72	-2.14	1.96
9:15:00	2.32	1.40	4.35	2.82	0.70	4.42	-2.12	1.60
9:30:00	3.43	1.20	4.00	2.66	0.80	4.53	-1.85	1.87
9:45:00	2.57	1.03	4.57	2.63	1.01	4.38	-1.62	1.75
10:00:00	3.74	3.89	4.47	2.87	1.67	4.22	-1.20	1.35
10:15:00	2.12	1.67	2.74	2.84	1.84	4.03	-1.00	1.19
10:30:00	2.26	2.14	3.29	2.82	1.99	3.81	-0.83	0.99
10:45:00	2.09	1.59	2.88	2.55	2.07	3.59	-0.49	1.04
11:00:00	2.14	1.66	2.55	2.47	2.19	3.19	-0.28	0.72
11:15:00	3.40	6.48	4.29	2.40	2.71	3.15	0.31	0.75
11:30:00	3.50	12.68	2.78	2.68	4.91	3.16	2.23	0.48
11:45:00	2.13	9.25	3.13	2.65	6.33	3.13	3.68	0.48
12:00:00	2.04	9.51	6.60	2.64	7.92	3.87	5.27	1.23
12:15:00	12.24	6.53	3.66	4.66	8.89	4.09	4.23	-0.57
12:30:00	4.05	3.34	3.49	4.79	8.26	3.93	3.47	-0.86
12:45:00	2.17	4.56	2.33	4.53	6.64	3.84	2.11	-0.69
13:00:00	3.87	4.56	2.52	4.88	5.70	3.72	0.82	-1.16
13:15:00	2.13	4.01	2.60	4.89	4.60	2.92	-0.30	-1.98
13:30:00	2.12	2.24	2.82	2.87	3.74	2.75	0.87	-0.12
13:45:00	2.31	1.75	4.36	2.52	3.42	2.93	0.90	0.41
14:00:00	2.10	1.60	3.64	2.51	2.83	3.19	0.32	0.68
14:15:00	3.84	1.39	4.00	2.50	2.19	3.49	-0.31	0.98
14:30:00	3.41	1.59	3.22	2.76	1.71	3.61	-1.04	0.85
14:45:00	3.52	1.90	3.54	3.04	1.65	3.75	-1.39	0.72
15:00:00	2.82	1.18	4.26	3.14	1.53	3.73	-1.61	0.59
15:15:00	3.60	1.62	3.96	3.44	1.54	3.80	-1.90	0.36
15:30:00	4.58	1.30	3.38	3.59	1.52	3.67	-2.07	0.09
15:45:00	3.16	2.89	4.43	3.54	1.78	3.92	-1.76	0.38
16:00:00	4.07	3.27	2.77	3.64	2.05	3.76	-1.59	0.12
16:15:00	2.83	1.89	3.14	3.65	2.19	3.54	-1.45	-0.11
16:30:00	3.29	1.68	2.89	3.58	2.21	3.32	-1.38	-0.26
16:45:00	3.17	2.46	3.02	3.30	2.44	3.25	-0.87	-0.05
17:00:00	2.88	0.88	2.64	3.25	2.04	2.89	-1.21	-0.35
17:15:00	3.89	1.41	2.68	3.21	1.66	2.88	-1.55	-0.34
17:30:00	2.26	1.20	2.36	3.10	1.53	2.72	-1.57	-0.38
17:45:00	4.16	1.39	2.63	3.27	1.47	2.67	-1.81	-0.61
18:00:00	2.44	1.29	2.86	3.13	1.23	2.63	-1.89	-0.49

Thursday, February 8, 2024

Time	Turbidity (NTU)			Rolling Average Turbidity (NTU)			Difference (NTU)	
	Ambient	W TB4	S Carroll Street	Ambient	W TB4	S Carroll Street	W TB4 - Ambient	S Carroll Street
7:00:00	3.38	1.63	1.82	2.47	1.48	1.95	-0.99	-0.52
7:15:00	2.14	0.67	1.61	2.45	1.16	1.84	-1.29	-0.62
7:30:00	3.47	0.56	2.00	2.69	1.04	1.84	-1.65	-0.85
7:45:00	3.45	1.11	0.00	2.92	0.97	1.48	-1.95	-1.44
8:00:00	2.18	0.63	2.08	2.92	0.92	1.50	-2.00	-1.42
8:15:00	2.69	0.88	1.90	2.78	0.77	1.52	-2.01	-1.27
8:30:00	2.34	0.59	1.81	2.82	0.76	1.56	-2.07	-1.27
8:45:00	4.06	1.16	2.10	2.94	0.87	1.58	-2.07	-1.36
9:00:00	3.23	--	1.80	2.90	0.81	1.94	-2.09	-0.96
9:15:00	3.96	0.68	2.68	3.26	0.83	2.06	-2.43	-1.19
9:30:00	2.35	0.54	2.75	3.19	0.74	2.23	-2.45	-0.96
9:45:00	2.48	0.74	1.92	3.22	0.78	2.25	-2.44	-0.96
10:00:00	3.00	0.39	1.85	3.00	0.59	2.20	-2.42	-0.80
10:15:00	2.30	0.50	2.04	2.82	0.57	2.25	-2.25	-0.57
10:30:00	3.22	--	2.56	2.67	0.54	2.22	-2.13	-0.45
10:45:00	2.01	0.51	--	2.60	0.54	2.09	-2.06	-0.51
11:00:00	2.50	0.58	2.73	2.61	0.50	2.29	-2.11	-0.31
11:15:00	2.28	1.43	2.73	2.46	0.76	2.51	-1.71	0.05
11:30:00	2.30	1.31	2.59	2.46	0.96	2.65	-1.50	0.19
11:45:00	3.88	0.73	2.83	2.59	0.91	2.72	-1.68	0.13
12:00:00	2.54	1.17	3.03	2.70	1.04	2.78	-1.66	0.08
12:15:00	3.55	0.26	2.79	2.91	0.98	2.80	-1.93	-0.11
12:30:00	2.62	0.50	4.10	2.98	0.79	3.07	-2.19	0.09
12:45:00	2.33	0.81	3.55	2.98	0.69	3.26	-2.29	0.28
13:00:00	2.65	0.42	5.16	2.74	0.63	3.73	-2.11	0.99
13:15:00	1.93	1.39	3.55	2.62	0.68	3.83	-1.94	1.21
13:30:00	3.49	0.92	2.94	2.60	0.81	3.86	-1.79	1.26
13:45:00	2.29	1.52	4.34	2.54	1.01	3.91	-1.52	1.37
14:00:00	2.37	1.47	2.95	2.55	1.15	3.79	-1.40	1.24
14:15:00	2.62	--	2.94	2.54	1.33	3.35	-1.21	0.81
14:30:00	2.44	0.68	3.23	2.64	1.15	3.28	-1.49	0.64
14:45:00	3.70	1.44	2.50	2.68	1.28	3.19	-1.41	0.51
15:00:00	2.61	1.61	2.71	2.75	1.30	2.87	-1.45	0.12
15:15:00	3.98	0.87	2.62	3.07	1.15	2.80	-1.92	-0.27
15:30:00	2.45	1.88	2.86	3.04	1.29	2.79	-1.74	-0.25
15:45:00	2.63	0.64	2.75	3.08	1.29	2.69	-1.79	-0.39
16:00:00	3.04	0.96	2.61	2.94	1.19	2.71	-1.75	-0.23
16:15:00	2.98	0.95	2.22	3.02	1.06	2.61	-1.96	-0.40
16:30:00	3.94	1.34	2.37	3.01	1.15	2.56	-1.86	-0.45
16:45:00	2.42	1.00	2.12	3.00	0.98	2.41	-2.03	-0.59
17:00:00	2.14	0.55	1.94	2.91	0.96	2.25	-1.95	-0.65
17:15:00	2.31	1.39	2.11	2.76	1.05	2.15	-1.71	-0.61
17:30:00	2.07	1.19	1.55	2.58	1.10	2.02	-1.48	-0.56
17:45:00	4.33	1.36	1.66	2.65	1.10	1.87	-1.56	-0.78
18:00:00	2.32	--	1.65	2.64	1.12	1.78	-1.51	-0.85

Friday, February 9, 2024

Time	Turbidity (NTU)			Rolling Average Turbidity (NTU)			Difference (NTU)	
	Ambient	W TB4	S Carroll Street	Ambient	W TB4	S Carroll Street	W TB4 - Ambient	S Carroll Street
7:00:00	2.02	0.73	2.93	2.75	0.60	3.15	-2.15	0.40
7:15:00	2.67	0.38	2.83	2.82	0.51	3.25	-2.31	0.43
7:30:00	4.10	0.76	2.45	2.87	0.59	2.94	-2.27	0.08
7:45:00	2.21	0.20	2.76	2.73	0.50	2.82	-2.24	0.09
8:00:00	3.57	1.19	2.59	2.91	0.65	2.71	-2.26	-0.20
8:15:00	2.31	--	0.00	2.97	0.63	2.13	-2.34	-0.85
8:30:00	2.30	0.32	3.17	2.90	0.62	2.19	-2.28	-0.70
8:45:00	2.15	0.94	2.74	2.51	0.66	2.25	-1.85	-0.26
9:00:00	2.47	0.52	3.17	2.56	0.74	2.34	-1.82	-0.23
9:15:00	4.51	0.52	2.63	2.75	0.58	2.34	-2.17	-0.41
9:30:00	--	0.40	2.81	2.86	0.54	2.91	-2.32	0.05
9:45:00	4.70	0.43	3.38	3.46	0.56	2.95	-2.89	-0.51
10:00:00	2.54	--	3.26	3.55	0.47	3.05	-3.09	-0.51
10:15:00	2.49	0.58	3.22	3.56	0.48	3.06	-3.07	-0.50
10:30:00	2.77	0.23	4.35	3.12	0.41	3.40	-2.71	0.28
10:45:00	2.35	--	3.87	2.97	0.41	3.61	-2.55	0.65
11:00:00	4.23	0.17	6.67	2.87	0.33	4.27	-2.55	1.40
11:15:00	2.81	0.54	4.71	2.93	0.38	4.56	-2.55	1.63
11:30:00	2.43	0.24	7.85	2.92	0.30	5.49	-2.62	2.57
11:45:00	2.38	--	7.30	2.84	0.32	6.08	-2.52	3.24
12:00:00	2.25	0.32	5.79	2.82	0.32	6.46	-2.50	3.64
12:15:00	2.46	0.33	5.62	2.47	0.36	6.25	-2.11	3.79
12:30:00	2.43	0.75	5.50	2.39	0.41	6.41	-1.98	4.02
12:45:00	4.11	0.38	7.07	2.73	0.44	6.25	-2.29	3.53
13:00:00	3.45	0.61	7.33	2.94	0.48	6.26	-2.46	3.32
13:15:00	4.51	0.56	8.32	3.39	0.53	6.77	-2.87	3.38
13:30:00	2.21	1.38	6.32	3.34	0.74	6.91	-2.60	3.57
13:45:00	4.14	0.90	7.77	3.68	0.77	7.36	-2.92	3.68
14:00:00	2.47	0.44	6.42	3.36	0.78	7.23	-2.58	3.88
14:15:00	2.17	2.68	7.72	3.10	1.19	7.31	-1.91	4.21
14:30:00	3.92	3.65	7.20	2.98	1.81	7.09	-1.17	4.11
14:45:00	2.44	4.70	6.66	3.03	2.47	7.16	-0.55	4.13
15:00:00	3.18	6.26	6.07	2.84	3.55	6.82	0.71	3.98
15:15:00	3.18	4.64	6.69	2.98	4.39	6.87	1.41	3.89
15:30:00	2.73	2.87	6.22	3.09	4.42	6.57	1.34	3.48
15:45:00	5.41	1.95	8.99	3.39	4.08	6.93	0.70	3.54
16:00:00	2.72	1.32	5.47	3.44	3.41	6.69	-0.04	3.25
16:15:00	4.46	1.43	4.94	3.70	2.44	6.46	-1.26	2.76
16:30:00	2.42	1.62	5.42	3.55	1.84	6.21	-1.71	2.66
16:45:00	2.80	1.94	5.14	3.56	1.65	5.99	-1.91	2.43
17:00:00	2.36	1.93	4.31	2.95	1.65	5.06	-1.30	2.11
17:15:00	2.75	2.17	4.36	2.96	1.82	4.84	-1.14	1.88
17:30:00	5.40	2.28	3.71	3.14	1.99	4.59	-1.16	1.44
17:45:00	3.81	3.12	4.85	3.42	2.29	4.48	-1.14	1.05
18:00:00	4.97	0.80	4.17	3.86	2.06	4.28	-1.80	0.43

APPENDIX B
Dissolved Oxygen Data

February 4 - February 11, 2024

Date	Time	DO (mg/L)		
		Ambient	W TB4	S CSB
2/4/2024	0:00:00	7.07	8.58	6.47
2/4/2024	0:15:00	7.35	8.73	6.79
2/4/2024	0:30:00	7.27	10.58	6.46
2/4/2024	0:45:00	7.21	10.48	6.31
2/4/2024	1:00:00	7.60	10.65	6.53
2/4/2024	1:15:00	7.42	10.58	6.62
2/4/2024	1:30:00	7.47	10.64	6.71
2/4/2024	1:45:00	7.42	10.40	6.99
2/4/2024	2:00:00	8.20	10.89	7.14
2/4/2024	2:15:00	8.33	10.84	8.44
2/4/2024	2:30:00	9.22	9.86	8.71
2/4/2024	2:45:00	9.28	9.40	9.32
2/4/2024	3:00:00	9.12	8.94	9.02
2/4/2024	3:15:00	9.38	9.56	9.06
2/4/2024	3:30:00	8.45	9.37	9.34
2/4/2024	3:45:00	7.39	9.62	9.62
2/4/2024	4:00:00	7.18	9.53	9.58
2/4/2024	4:15:00	7.16	9.82	9.33
2/4/2024	4:30:00	7.08	9.87	8.73
2/4/2024	4:45:00	7.22	9.80	8.51
2/4/2024	5:00:00	7.64	10.07	8.50
2/4/2024	5:15:00	7.98	10.16	8.50
2/4/2024	5:30:00	7.88	10.14	8.52
2/4/2024	5:45:00	7.51	9.30	8.46
2/4/2024	6:00:00	7.68	9.13	8.44
2/4/2024	6:15:00	7.46	9.04	8.80
2/4/2024	6:30:00	7.58	9.02	8.31
2/4/2024	6:45:00	7.50	8.89	8.88
2/4/2024	7:00:00	7.53	8.97	8.50
2/4/2024	7:15:00	7.49	9.02	8.95
2/4/2024	7:30:00	7.43	9.11	8.97
2/4/2024	7:45:00	7.27	8.78	8.53
2/4/2024	8:00:00	7.06	8.47	8.68
2/4/2024	8:15:00	7.32	--	8.91
2/4/2024	8:30:00	7.51	9.36	8.87
2/4/2024	8:45:00	7.62	9.78	8.56
2/4/2024	9:00:00	7.65	9.99	8.79
2/4/2024	9:15:00	7.59	9.74	8.60
2/4/2024	9:30:00	7.54	9.68	8.18
2/4/2024	9:45:00	7.49	9.49	8.44
2/4/2024	10:00:00	7.63	9.40	8.26
2/4/2024	10:15:00	7.77	9.51	8.57
2/4/2024	10:30:00	7.58	9.68	8.39
2/4/2024	10:45:00	7.69	9.96	8.39
2/4/2024	11:00:00	7.98	10.02	8.34
2/4/2024	11:15:00	8.45	10.23	8.52
2/4/2024	11:30:00	8.41	10.36	8.58
2/4/2024	11:45:00	8.49	10.37	8.50

Note: Data has not been validated

February 4 - February 11, 2024

Date	Time	DO (mg/L)		
		Ambient	W TB4	S CSB
2/4/2024	12:00:00	8.70	10.33	8.41
2/4/2024	12:15:00	8.11	10.32	8.57
2/4/2024	12:30:00	7.73	9.67	8.60
2/4/2024	12:45:00	7.81	9.19	8.59
2/4/2024	13:00:00	7.94	9.24	8.51
2/4/2024	13:15:00	8.38	9.75	8.67
2/4/2024	13:30:00	8.31	9.81	8.80
2/4/2024	13:45:00	8.44	9.86	8.88
2/4/2024	14:00:00	8.57	10.04	8.97
2/4/2024	14:15:00	8.64	9.42	9.23
2/4/2024	14:30:00	8.64	9.16	9.21
2/4/2024	14:45:00	7.90	9.10	8.89
2/4/2024	15:00:00	8.18	9.17	8.50
2/4/2024	15:15:00	8.40	9.12	8.96
2/4/2024	15:30:00	8.19	8.92	8.10
2/4/2024	15:45:00	8.52	8.77	7.73
2/4/2024	16:00:00	8.65	9.19	7.73
2/4/2024	16:15:00	8.62	9.17	7.29
2/4/2024	16:30:00	8.76	9.00	7.69
2/4/2024	16:45:00	8.69	8.87	7.15
2/4/2024	17:00:00	8.51	8.76	6.74
2/4/2024	17:15:00	8.62	8.64	6.89
2/4/2024	17:30:00	8.20	8.38	6.48
2/4/2024	17:45:00	8.00	8.86	6.69
2/4/2024	18:00:00	8.03	8.44	6.64
2/4/2024	18:15:00	8.17	8.69	6.85
2/4/2024	18:30:00	8.40	8.71	6.98
2/4/2024	18:45:00	7.76	8.78	7.09
2/4/2024	19:00:00	7.64	8.43	6.96
2/4/2024	19:15:00	7.72	8.26	7.27
2/4/2024	19:30:00	7.45	8.00	7.26
2/4/2024	19:45:00	7.52	8.09	7.02
2/4/2024	20:00:00	7.54	8.32	6.93
2/4/2024	20:15:00	7.16	8.62	6.70
2/4/2024	20:30:00	7.28	8.17	6.92
2/4/2024	20:45:00	7.15	8.70	6.81
2/4/2024	21:00:00	7.10	8.02	6.62
2/4/2024	21:15:00	7.04	8.73	6.87
2/4/2024	21:30:00	7.26	8.55	6.87
2/4/2024	21:45:00	7.19	7.97	7.06
2/4/2024	22:00:00	6.95	8.26	7.00
2/4/2024	22:15:00	6.98	8.47	7.21
2/4/2024	22:30:00	7.12	8.69	7.19
2/4/2024	22:45:00	7.12	8.83	7.10
2/4/2024	23:00:00	7.26	9.30	7.06
2/4/2024	23:15:00	7.10	9.52	7.22
2/4/2024	23:30:00	7.19	9.86	7.17
2/4/2024	23:45:00	7.21	9.82	6.85

Note: Data has not been validated

February 4 - February 11, 2024

Date	Time	DO (mg/L)		
		Ambient	W TB4	S CSB
2/5/2024	0:00:00	7.11	9.41	6.62
2/5/2024	0:15:00	7.43	9.38	7.39
2/5/2024	0:30:00	7.33	9.27	7.27
2/5/2024	0:45:00	7.89	9.65	7.23
2/5/2024	1:00:00	8.15	9.94	6.81
2/5/2024	1:15:00	7.99	9.65	7.83
2/5/2024	1:30:00	7.57	9.42	8.83
2/5/2024	1:45:00	8.07	9.42	8.28
2/5/2024	2:00:00	8.05	9.38	8.65
2/5/2024	2:15:00	7.86	9.69	8.47
2/5/2024	2:30:00	8.26	9.59	8.80
2/5/2024	2:45:00	8.22	9.51	8.69
2/5/2024	3:00:00	8.24	9.45	8.60
2/5/2024	3:15:00	7.94	9.44	8.63
2/5/2024	3:30:00	7.50	9.38	8.59
2/5/2024	3:45:00	7.49	9.17	8.40
2/5/2024	4:00:00	7.60	8.98	8.50
2/5/2024	4:15:00	8.16	8.76	8.71
2/5/2024	4:30:00	8.02	8.82	8.55
2/5/2024	4:45:00	8.00	9.19	8.35
2/5/2024	5:00:00	7.70	9.01	8.15
2/5/2024	5:15:00	7.54	8.81	7.92
2/5/2024	5:30:00	7.70	9.25	7.78
2/5/2024	5:45:00	7.74	9.00	7.70
2/5/2024	6:00:00	7.93	9.05	7.54
2/5/2024	6:15:00	7.72	9.10	7.36
2/5/2024	6:30:00	7.67	8.94	7.31
2/5/2024	6:45:00	7.52	8.89	7.59
2/5/2024	7:00:00	7.65	8.70	6.80
2/5/2024	7:15:00	7.42	8.89	7.02
2/5/2024	7:30:00	7.46	8.94	7.14
2/5/2024	7:45:00	7.45	8.87	6.77
2/5/2024	8:00:00	7.57	8.97	6.48
2/5/2024	8:15:00	7.68	8.93	6.26
2/5/2024	8:30:00	7.78	8.87	6.12
2/5/2024	8:45:00	7.88	8.84	5.99
2/5/2024	9:00:00	7.70	8.76	5.83
2/5/2024	9:15:00	7.63	8.82	5.82
2/5/2024	9:30:00	7.60	8.69	5.65
2/5/2024	9:45:00	7.62	8.51	5.56
2/5/2024	10:00:00	7.61	8.62	5.60
2/5/2024	10:15:00	7.84	8.38	5.75
2/5/2024	10:30:00	7.89	8.30	--
2/5/2024	10:45:00	7.71	8.39	--
2/5/2024	11:00:00	7.76	8.63	5.89
2/5/2024	11:15:00	7.81	--	6.47
2/5/2024	11:30:00	13.26	9.02	6.47
2/5/2024	11:45:00	8.33	9.10	6.57

Note: Data has not been validated

February 4 - February 11, 2024

Date	Time	DO (mg/L)		
		Ambient	W TB4	S CSB
2/5/2024	12:00:00	8.11	8.94	6.88
2/5/2024	12:15:00	8.06	8.65	6.94
2/5/2024	12:30:00	7.94	8.71	7.00
2/5/2024	12:45:00	7.97	8.84	7.06
2/5/2024	13:00:00	7.89	9.01	7.00
2/5/2024	13:15:00	7.67	8.92	7.01
2/5/2024	13:30:00	7.87	8.81	7.36
2/5/2024	13:45:00	7.95	9.12	7.16
2/5/2024	14:00:00	8.02	8.94	7.30
2/5/2024	14:15:00	8.11	8.97	7.35
2/5/2024	14:30:00	7.89	8.88	7.62
2/5/2024	14:45:00	7.91	8.74	8.12
2/5/2024	15:00:00	7.93	8.78	8.30
2/5/2024	15:15:00	7.99	8.89	7.90
2/5/2024	15:30:00	8.58	8.86	7.33
2/5/2024	15:45:00	8.40	8.66	7.15
2/5/2024	16:00:00	8.40	8.61	7.03
2/5/2024	16:15:00	8.50	8.75	6.98
2/5/2024	16:30:00	8.43	8.68	6.88
2/5/2024	16:45:00	8.55	8.68	6.56
2/5/2024	17:00:00	8.35	8.77	6.41
2/5/2024	17:15:00	8.17	8.76	5.69
2/5/2024	17:30:00	7.89	8.58	5.27
2/5/2024	17:45:00	8.25	8.40	4.73
2/5/2024	18:00:00	8.30	8.41	4.20
2/5/2024	18:15:00	8.36	8.28	3.91
2/5/2024	18:30:00	8.58	7.90	2.32
2/5/2024	18:45:00	8.38	7.79	1.89
2/5/2024	19:00:00	7.83	7.59	2.98
2/5/2024	19:15:00	8.19	7.54	1.97
2/5/2024	19:30:00	7.96	7.32	2.15
2/5/2024	19:45:00	7.68	7.06	1.89
2/5/2024	20:00:00	7.78	6.88	2.68
2/5/2024	20:15:00	7.20	6.43	2.52
2/5/2024	20:30:00	7.38	6.61	2.32
2/5/2024	20:45:00	7.21	6.27	1.68
2/5/2024	21:00:00	7.22	6.47	1.68
2/5/2024	21:15:00	6.83	6.40	1.85
2/5/2024	21:30:00	6.91	6.60	2.33
2/5/2024	21:45:00	6.94	6.52	0.91
2/5/2024	22:00:00	6.81	6.18	0.76
2/5/2024	22:15:00	6.96	6.21	0.77
2/5/2024	22:30:00	6.80	6.19	0.80
2/5/2024	22:45:00	6.74	6.25	0.89
2/5/2024	23:00:00	6.76	6.18	0.68
2/5/2024	23:15:00	6.75	5.86	1.08
2/5/2024	23:30:00	6.86	5.77	1.13
2/5/2024	23:45:00	6.88	4.75	1.47

Note: Data has not been validated

February 4 - February 11, 2024

Date	Time	DO (mg/L)		
		Ambient	W TB4	S CSB
2/6/2024	0:00:00	6.95	5.73	1.28
2/6/2024	0:15:00	6.61	5.93	1.66
2/6/2024	0:30:00	6.30	5.45	1.29
2/6/2024	0:45:00	5.93	5.53	2.66
2/6/2024	1:00:00	6.19	5.42	2.50
2/6/2024	1:15:00	6.51	5.45	1.50
2/6/2024	1:30:00	6.25	5.35	1.76
2/6/2024	1:45:00	6.42	5.40	1.31
2/6/2024	2:00:00	5.83	5.48	2.34
2/6/2024	2:15:00	6.18	5.44	2.46
2/6/2024	2:30:00	6.37	5.55	2.51
2/6/2024	2:45:00	6.61	5.60	0.87
2/6/2024	3:00:00	6.91	5.44	0.89
2/6/2024	3:15:00	6.31	5.36	1.10
2/6/2024	3:30:00	5.57	5.35	1.50
2/6/2024	3:45:00	6.25	5.22	2.31
2/6/2024	4:00:00	6.10	5.15	3.21
2/6/2024	4:15:00	5.79	5.82	4.13
2/6/2024	4:30:00	5.75	5.48	3.81
2/6/2024	4:45:00	6.03	4.96	3.30
2/6/2024	5:00:00	5.99	5.38	4.50
2/6/2024	5:15:00	5.53	5.28	4.92
2/6/2024	5:30:00	3.67	6.22	5.33
2/6/2024	5:45:00	4.62	5.64	5.30
2/6/2024	6:00:00	4.89	4.67	6.44
2/6/2024	6:15:00	5.45	4.46	6.21
2/6/2024	6:30:00	5.48	4.68	6.31
2/6/2024	6:45:00	5.37	4.68	6.04
2/6/2024	7:00:00	5.43	4.66	5.10
2/6/2024	7:15:00	5.06	6.07	6.33
2/6/2024	7:30:00	5.65	7.28	6.15
2/6/2024	7:45:00	4.67	--	7.06
2/6/2024	8:00:00	5.60	6.15	6.94
2/6/2024	8:15:00	5.55	5.87	6.33
2/6/2024	8:30:00	5.52	6.41	6.90
2/6/2024	8:45:00	5.40	6.41	7.04
2/6/2024	9:00:00	5.45	6.30	7.05
2/6/2024	9:15:00	5.61	6.56	6.88
2/6/2024	9:30:00	5.52	6.75	6.92
2/6/2024	9:45:00	5.13	6.61	7.50
2/6/2024	10:00:00	5.51	6.19	7.21
2/6/2024	10:15:00	5.39	6.31	7.54
2/6/2024	10:30:00	5.80	6.31	7.07
2/6/2024	10:45:00	5.70	6.51	7.55
2/6/2024	11:00:00	5.21	6.51	7.31
2/6/2024	11:15:00	5.31	6.62	7.38
2/6/2024	11:30:00	3.12	6.64	7.44
2/6/2024	11:45:00	5.24	6.63	6.99

Note: Data has not been validated

February 4 - February 11, 2024

Date	Time	DO (mg/L)		
		Ambient	W TB4	S CSB
2/6/2024	12:00:00	5.09	6.76	6.77
2/6/2024	12:15:00	4.79	6.89	6.11
2/6/2024	12:30:00	5.91	6.65	5.90
2/6/2024	12:45:00	6.26	6.85	6.15
2/6/2024	13:00:00	6.04	7.06	6.08
2/6/2024	13:15:00	6.17	7.71	6.09
2/6/2024	13:30:00	5.86	7.64	5.92
2/6/2024	13:45:00	5.73	8.12	5.81
2/6/2024	14:00:00	6.43	7.66	5.95
2/6/2024	14:15:00	6.28	7.67	6.14
2/6/2024	14:30:00	6.19	7.08	6.12
2/6/2024	14:45:00	5.97	7.78	5.96
2/6/2024	15:00:00	5.92	7.85	6.15
2/6/2024	15:15:00	5.91	7.86	6.06
2/6/2024	15:30:00	6.04	8.40	7.08
2/6/2024	15:45:00	6.26	8.02	7.01
2/6/2024	16:00:00	6.32	8.67	7.17
2/6/2024	16:15:00	6.25	8.10	7.09
2/6/2024	16:30:00	6.23	8.14	7.34
2/6/2024	16:45:00	5.97	8.45	7.35
2/6/2024	17:00:00	6.18	8.17	7.28
2/6/2024	17:15:00	6.41	8.71	7.27
2/6/2024	17:30:00	7.07	8.23	7.17
2/6/2024	17:45:00	6.94	8.11	6.98
2/6/2024	18:00:00	6.94	7.69	7.10
2/6/2024	18:15:00	6.87	8.05	7.18
2/6/2024	18:30:00	6.74	7.98	6.87
2/6/2024	18:45:00	6.79	8.18	5.92
2/6/2024	19:00:00	6.76	7.93	6.81
2/6/2024	19:15:00	7.21	7.87	6.82
2/6/2024	19:30:00	7.09	8.17	6.95
2/6/2024	19:45:00	7.34	8.21	7.18
2/6/2024	20:00:00	7.66	8.08	7.09
2/6/2024	20:15:00	7.33	8.11	7.04
2/6/2024	20:30:00	7.69	8.08	6.96
2/6/2024	20:45:00	7.60	8.01	6.82
2/6/2024	21:00:00	7.24	7.95	6.84
2/6/2024	21:15:00	7.29	8.10	6.86
2/6/2024	21:30:00	7.43	8.06	6.51
2/6/2024	21:45:00	7.39	7.94	6.46
2/6/2024	22:00:00	7.24	7.85	6.43
2/6/2024	22:15:00	7.11	7.49	6.63
2/6/2024	22:30:00	7.68	8.11	6.28
2/6/2024	22:45:00	7.58	8.02	6.19
2/6/2024	23:00:00	7.10	8.04	6.10
2/6/2024	23:15:00	7.24	7.90	6.11
2/6/2024	23:30:00	7.50	8.10	6.14
2/6/2024	23:45:00	7.42	7.80	6.03

Note: Data has not been validated

February 4 - February 11, 2024

Date	Time	DO (mg/L)		
		Ambient	W TB4	S CSB
2/7/2024	0:00:00	7.34	6.85	6.14
2/7/2024	0:15:00	7.53	7.02	6.25
2/7/2024	0:30:00	7.11	7.51	6.29
2/7/2024	0:45:00	6.89	8.29	5.83
2/7/2024	1:00:00	7.00	7.61	6.38
2/7/2024	1:15:00	6.89	7.97	5.90
2/7/2024	1:30:00	7.05	8.14	6.07
2/7/2024	1:45:00	7.13	8.26	6.21
2/7/2024	2:00:00	7.01	8.00	6.13
2/7/2024	2:15:00	6.85	8.52	6.46
2/7/2024	2:30:00	7.18	8.28	6.57
2/7/2024	2:45:00	7.26	8.06	6.71
2/7/2024	3:00:00	7.67	8.01	6.59
2/7/2024	3:15:00	7.69	7.84	6.74
2/7/2024	3:30:00	7.72	8.04	7.00
2/7/2024	3:45:00	7.61	8.27	7.25
2/7/2024	4:00:00	7.40	7.95	7.30
2/7/2024	4:15:00	7.08	8.18	6.82
2/7/2024	4:30:00	6.98	8.04	7.13
2/7/2024	4:45:00	7.36	8.24	6.65
2/7/2024	5:00:00	7.27	8.31	6.73
2/7/2024	5:15:00	7.35	7.96	6.71
2/7/2024	5:30:00	7.20	8.16	6.53
2/7/2024	5:45:00	7.24	7.82	6.96
2/7/2024	6:00:00	7.12	7.64	6.98
2/7/2024	6:15:00	7.33	8.14	6.99
2/7/2024	6:30:00	7.23	--	7.07
2/7/2024	6:45:00	7.24	7.67	7.15
2/7/2024	7:00:00	7.05	8.02	7.21
2/7/2024	7:15:00	7.51	7.69	7.03
2/7/2024	7:30:00	7.45	7.90	6.38
2/7/2024	7:45:00	7.36	7.78	6.42
2/7/2024	8:00:00	7.34	7.82	6.39
2/7/2024	8:15:00	7.21	8.16	6.58
2/7/2024	8:30:00	7.20	8.19	5.94
2/7/2024	8:45:00	7.30	8.58	6.29
2/7/2024	9:00:00	7.37	8.35	6.40
2/7/2024	9:15:00	7.36	8.27	6.03
2/7/2024	9:30:00	7.16	8.35	6.20
2/7/2024	9:45:00	7.34	8.32	6.19
2/7/2024	10:00:00	7.26	8.13	5.92
2/7/2024	10:15:00	7.46	7.94	6.25
2/7/2024	10:30:00	7.56	7.91	5.81
2/7/2024	10:45:00	7.40	8.18	6.00
2/7/2024	11:00:00	7.54	8.23	6.33
2/7/2024	11:15:00	7.62	7.79	6.18
2/7/2024	11:30:00	7.68	7.95	5.88
2/7/2024	11:45:00	7.68	7.53	5.84

Note: Data has not been validated

February 4 - February 11, 2024

Date	Time	DO (mg/L)		
		Ambient	W TB4	S CSB
2/7/2024	12:00:00	7.86	7.71	5.96
2/7/2024	12:15:00	8.03	7.46	5.86
2/7/2024	12:30:00	7.92	7.60	6.07
2/7/2024	12:45:00	7.85	7.06	5.98
2/7/2024	13:00:00	7.83	7.29	5.89
2/7/2024	13:15:00	7.74	7.67	6.12
2/7/2024	13:30:00	7.74	8.05	6.09
2/7/2024	13:45:00	7.73	8.26	5.90
2/7/2024	14:00:00	7.65	8.24	5.95
2/7/2024	14:15:00	7.55	8.46	5.92
2/7/2024	14:30:00	7.31	8.75	5.76
2/7/2024	14:45:00	7.13	9.02	5.85
2/7/2024	15:00:00	7.56	8.80	5.79
2/7/2024	15:15:00	7.42	8.61	6.23
2/7/2024	15:30:00	7.30	9.11	6.69
2/7/2024	15:45:00	7.97	9.18	6.92
2/7/2024	16:00:00	7.83	8.58	6.88
2/7/2024	16:15:00	7.92	8.89	7.09
2/7/2024	16:30:00	7.82	8.75	6.90
2/7/2024	16:45:00	7.51	8.72	6.94
2/7/2024	17:00:00	7.69	8.48	7.08
2/7/2024	17:15:00	7.73	8.33	7.34
2/7/2024	17:30:00	7.61	8.20	7.18
2/7/2024	17:45:00	7.55	8.20	7.23
2/7/2024	18:00:00	7.58	8.11	7.07
2/7/2024	18:15:00	7.46	8.06	6.95
2/7/2024	18:30:00	7.64	8.15	6.92
2/7/2024	18:45:00	7.57	7.99	7.00
2/7/2024	19:00:00	7.63	8.12	7.12
2/7/2024	19:15:00	7.53	8.01	7.09
2/7/2024	19:30:00	7.54	8.03	6.87
2/7/2024	19:45:00	7.51	8.02	6.82
2/7/2024	20:00:00	7.46	7.97	6.94
2/7/2024	20:15:00	7.46	8.10	6.71
2/7/2024	20:30:00	7.51	8.00	6.68
2/7/2024	20:45:00	7.43	7.97	6.72
2/7/2024	21:00:00	7.50	7.88	6.64
2/7/2024	21:15:00	7.31	7.96	6.55
2/7/2024	21:30:00	7.47	7.97	6.41
2/7/2024	21:45:00	7.42	7.66	5.36
2/7/2024	22:00:00	7.32	7.69	5.64
2/7/2024	22:15:00	7.31	7.71	5.54
2/7/2024	22:30:00	7.34	7.73	5.47
2/7/2024	22:45:00	7.30	7.95	5.33
2/7/2024	23:00:00	7.38	7.58	5.35
2/7/2024	23:15:00	7.43	7.19	5.30
2/7/2024	23:30:00	7.27	7.80	5.34
2/7/2024	23:45:00	7.27	7.80	5.18

Note: Data has not been validated

February 4 - February 11, 2024

Date	Time	DO (mg/L)		
		Ambient	W TB4	S CSB
2/8/2024	0:00:00	7.27	7.71	5.30
2/8/2024	0:15:00	7.28	7.59	5.33
2/8/2024	0:30:00	7.20	7.11	5.36
2/8/2024	0:45:00	7.13	6.69	5.36
2/8/2024	1:00:00	7.23	6.71	5.45
2/8/2024	1:15:00	7.25	6.78	5.27
2/8/2024	1:30:00	7.27	6.75	5.30
2/8/2024	1:45:00	7.22	7.02	5.41
2/8/2024	2:00:00	7.20	7.51	5.18
2/8/2024	2:15:00	7.24	7.53	5.22
2/8/2024	2:30:00	7.29	7.99	5.23
2/8/2024	2:45:00	7.31	7.99	5.39
2/8/2024	3:00:00	7.31	8.08	5.38
2/8/2024	3:15:00	6.53	8.43	5.24
2/8/2024	3:30:00	6.65	8.58	5.54
2/8/2024	3:45:00	6.66	9.29	5.80
2/8/2024	4:00:00	6.63	9.60	5.69
2/8/2024	4:15:00	6.69	9.45	5.74
2/8/2024	4:30:00	6.75	9.06	5.78
2/8/2024	4:45:00	6.99	9.85	6.00
2/8/2024	5:00:00	7.10	10.12	6.01
2/8/2024	5:15:00	7.05	10.06	6.89
2/8/2024	5:30:00	7.19	9.92	6.66
2/8/2024	5:45:00	7.63	9.80	6.78
2/8/2024	6:00:00	7.23	10.39	6.94
2/8/2024	6:15:00	7.38	10.48	6.90
2/8/2024	6:30:00	7.60	10.46	6.74
2/8/2024	6:45:00	7.42	10.46	6.76
2/8/2024	7:00:00	7.15	10.45	6.71
2/8/2024	7:15:00	7.07	10.26	6.98
2/8/2024	7:30:00	7.02	10.11	6.42
2/8/2024	7:45:00	7.49	9.56	6.86
2/8/2024	8:00:00	7.28	9.84	6.94
2/8/2024	8:15:00	7.37	9.83	6.71
2/8/2024	8:30:00	8.03	9.21	6.36
2/8/2024	8:45:00	7.50	9.36	6.39
2/8/2024	9:00:00	7.43	8.95	6.42
2/8/2024	9:15:00	7.38	8.53	6.35
2/8/2024	9:30:00	7.42	8.28	6.16
2/8/2024	9:45:00	7.46	8.22	5.89
2/8/2024	10:00:00	7.36	8.15	5.85
2/8/2024	10:15:00	7.40	8.19	5.68
2/8/2024	10:30:00	7.48	8.23	5.48
2/8/2024	10:45:00	7.41	8.37	5.24
2/8/2024	11:00:00	7.39	8.38	5.33
2/8/2024	11:15:00	7.38	8.38	5.39
2/8/2024	11:30:00	7.44	8.49	5.31
2/8/2024	11:45:00	7.45	8.04	5.22

Note: Data has not been validated

February 4 - February 11, 2024

Date	Time	DO (mg/L)		
		Ambient	W TB4	S CSB
2/8/2024	12:00:00	7.41	8.05	5.28
2/8/2024	12:15:00	7.28	7.89	5.56
2/8/2024	12:30:00	7.58	8.06	5.03
2/8/2024	12:45:00	7.45	7.85	4.90
2/8/2024	13:00:00	7.42	7.98	4.86
2/8/2024	13:15:00	7.50	7.11	4.97
2/8/2024	13:30:00	7.62	7.57	5.33
2/8/2024	13:45:00	7.63	7.05	5.12
2/8/2024	14:00:00	7.60	6.98	5.43
2/8/2024	14:15:00	7.63	7.16	5.26
2/8/2024	14:30:00	7.46	7.40	5.36
2/8/2024	14:45:00	7.57	7.27	5.23
2/8/2024	15:00:00	7.54	7.81	5.25
2/8/2024	15:15:00	7.50	8.08	5.34
2/8/2024	15:30:00	7.09	8.07	5.42
2/8/2024	15:45:00	7.15	8.17	5.53
2/8/2024	16:00:00	6.54	8.36	5.83
2/8/2024	16:15:00	6.47	8.80	6.01
2/8/2024	16:30:00	7.13	9.09	6.15
2/8/2024	16:45:00	7.12	9.45	6.30
2/8/2024	17:00:00	7.34	9.17	6.19
2/8/2024	17:15:00	7.43	8.65	6.14
2/8/2024	17:30:00	7.48	9.39	6.71
2/8/2024	17:45:00	7.13	9.00	6.74
2/8/2024	18:00:00	7.22	9.06	6.80
2/8/2024	18:15:00	7.12	9.32	6.75
2/8/2024	18:30:00	7.06	9.79	6.86
2/8/2024	18:45:00	7.13	9.84	6.45
2/8/2024	19:00:00	7.17	10.04	6.63
2/8/2024	19:15:00	7.17	10.10	6.08
2/8/2024	19:30:00	7.13	9.98	6.01
2/8/2024	19:45:00	7.28	9.92	6.14
2/8/2024	20:00:00	7.20	9.38	6.73
2/8/2024	20:15:00	7.42	9.97	6.65
2/8/2024	20:30:00	7.42	9.76	5.79
2/8/2024	20:45:00	7.89	9.77	5.73
2/8/2024	21:00:00	7.89	9.38	6.49
2/8/2024	21:15:00	7.65	9.44	5.72
2/8/2024	21:30:00	8.19	9.15	6.32
2/8/2024	21:45:00	7.92	8.96	5.30
2/8/2024	22:00:00	7.50	8.46	5.11
2/8/2024	22:15:00	7.60	8.24	5.51
2/8/2024	22:30:00	7.66	8.37	4.84
2/8/2024	22:45:00	7.60	8.34	4.55
2/8/2024	23:00:00	7.54	8.31	4.62
2/8/2024	23:15:00	7.46	8.04	4.44
2/8/2024	23:30:00	7.65	8.05	4.35
2/8/2024	23:45:00	7.68	7.98	4.44

Note: Data has not been validated

February 4 - February 11, 2024

Date	Time	DO (mg/L)		
		Ambient	W TB4	S CSB
2/9/2024	0:00:00	7.63	8.33	4.30
2/9/2024	0:15:00	7.56	8.30	4.34
2/9/2024	0:30:00	7.49	8.64	4.27
2/9/2024	0:45:00	7.54	8.15	4.26
2/9/2024	1:00:00	7.39	8.66	3.86
2/9/2024	1:15:00	7.46	7.92	4.17
2/9/2024	1:30:00	7.33	7.77	4.16
2/9/2024	1:45:00	7.44	7.93	4.01
2/9/2024	2:00:00	7.50	7.15	4.16
2/9/2024	2:15:00	7.59	6.27	4.24
2/9/2024	2:30:00	7.52	6.24	4.50
2/9/2024	2:45:00	8.00	6.82	4.43
2/9/2024	3:00:00	8.15	7.05	4.42
2/9/2024	3:15:00	7.91	7.52	4.44
2/9/2024	3:30:00	7.72	7.47	4.37
2/9/2024	3:45:00	8.14	7.48	4.48
2/9/2024	4:00:00	8.36	7.24	4.50
2/9/2024	4:15:00	8.14	7.41	4.59
2/9/2024	4:30:00	7.58	7.34	4.58
2/9/2024	4:45:00	7.76	7.24	4.57
2/9/2024	5:00:00	7.27	7.25	4.73
2/9/2024	5:15:00	6.75	7.25	4.81
2/9/2024	5:30:00	7.71	7.59	4.82
2/9/2024	5:45:00	7.76	7.94	5.25
2/9/2024	6:00:00	7.70	8.03	5.23
2/9/2024	6:15:00	7.35	7.98	5.12
2/9/2024	6:30:00	6.69	7.71	5.43
2/9/2024	6:45:00	6.67	7.70	5.46
2/9/2024	7:00:00	7.24	7.57	5.00
2/9/2024	7:15:00	7.31	7.64	5.66
2/9/2024	7:30:00	7.27	7.78	5.00
2/9/2024	7:45:00	7.29	7.78	4.73
2/9/2024	8:00:00	7.21	7.69	5.70
2/9/2024	8:15:00	7.09	7.73	5.69
2/9/2024	8:30:00	7.09	7.70	5.61
2/9/2024	8:45:00	7.01	7.65	5.11
2/9/2024	9:00:00	6.96	7.66	5.01
2/9/2024	9:15:00	6.77	7.72	5.05
2/9/2024	9:30:00	6.95	7.74	5.23
2/9/2024	9:45:00	7.08	7.47	4.76
2/9/2024	10:00:00	7.10	7.44	4.85
2/9/2024	10:15:00	7.09	7.44	4.77
2/9/2024	10:30:00	7.04	--	4.66
2/9/2024	10:45:00	7.03	7.92	4.56
2/9/2024	11:00:00	7.05	7.85	4.44
2/9/2024	11:15:00	7.01	7.88	4.42
2/9/2024	11:30:00	7.02	7.94	4.61
2/9/2024	11:45:00	7.06	7.95	4.00

Note: Data has not been validated

February 4 - February 11, 2024

Date	Time	DO (mg/L)		
		Ambient	W TB4	S CSB
2/9/2024	12:00:00	7.07	7.96	4.24
2/9/2024	12:15:00	7.13	8.00	4.23
2/9/2024	12:30:00	7.09	7.94	4.37
2/9/2024	12:45:00	7.12	7.92	3.93
2/9/2024	13:00:00	7.09	7.97	3.82
2/9/2024	13:15:00	7.05	7.36	3.83
2/9/2024	13:30:00	7.10	7.42	4.09
2/9/2024	13:45:00	7.22	7.87	3.87
2/9/2024	14:00:00	7.21	7.97	4.24
2/9/2024	14:15:00	7.21	7.58	4.11
2/9/2024	14:30:00	7.22	6.65	4.11
2/9/2024	14:45:00	7.31	5.89	4.10
2/9/2024	15:00:00	7.36	6.37	4.09
2/9/2024	15:15:00	7.39	6.56	4.09
2/9/2024	15:30:00	7.39	6.58	4.13
2/9/2024	15:45:00	7.28	7.19	4.29
2/9/2024	16:00:00	7.25	7.61	4.38
2/9/2024	16:15:00	7.25	7.60	4.65
2/9/2024	16:30:00	7.27	7.43	4.69
2/9/2024	16:45:00	7.26	7.39	4.85
2/9/2024	17:00:00	6.55	7.33	4.91
2/9/2024	17:15:00	7.18	7.47	5.12
2/9/2024	17:30:00	6.75	7.46	4.96
2/9/2024	17:45:00	6.71	7.63	5.28
2/9/2024	18:00:00	6.78	7.67	5.23
2/9/2024	18:15:00	6.75	7.52	5.26
2/9/2024	18:30:00	6.79	7.52	5.20
2/9/2024	18:45:00	6.93	7.54	5.26
2/9/2024	19:00:00	6.82	7.54	5.53
2/9/2024	19:15:00	6.85	7.52	5.84
2/9/2024	19:30:00	6.89	7.49	5.87
2/9/2024	19:45:00	6.79	7.41	5.61
2/9/2024	20:00:00	6.82	7.46	5.49
2/9/2024	20:15:00	6.88	7.39	5.25
2/9/2024	20:30:00	6.75	7.36	4.79
2/9/2024	20:45:00	6.79	7.40	5.34
2/9/2024	21:00:00	6.82	7.28	6.43
2/9/2024	21:15:00	6.70	7.40	5.20
2/9/2024	21:30:00	6.86	7.39	5.26
2/9/2024	21:45:00	6.88	6.88	5.12
2/9/2024	22:00:00	6.88	7.26	4.54
2/9/2024	22:15:00	6.83	7.34	4.63
2/9/2024	22:30:00	6.83	7.35	4.36
2/9/2024	22:45:00	6.81	7.48	5.13
2/9/2024	23:00:00	6.83	7.40	6.65
2/9/2024	23:15:00	6.73	7.20	3.53
2/9/2024	23:30:00	6.51	7.17	2.64
2/9/2024	23:45:00	6.61	7.26	2.67

Note: Data has not been validated

February 4 - February 11, 2024

Date	Time	DO (mg/L)		
		Ambient	W TB4	S CSB
2/10/2024	0:00:00	6.56	7.18	4.17
2/10/2024	0:15:00	6.70	7.15	2.16
2/10/2024	0:30:00	6.70	7.04	3.87
2/10/2024	0:45:00	6.73	6.99	2.49
2/10/2024	1:00:00	6.69	7.15	2.96
2/10/2024	1:15:00	6.69	7.02	2.10
2/10/2024	1:30:00	6.55	6.98	2.36
2/10/2024	1:45:00	6.50	6.95	1.94
2/10/2024	2:00:00	6.60	6.54	1.87
2/10/2024	2:15:00	6.54	6.48	2.26
2/10/2024	2:30:00	6.53	6.29	3.00
2/10/2024	2:45:00	6.51	6.08	2.59
2/10/2024	3:00:00	6.46	4.80	2.14
2/10/2024	3:15:00	6.52	5.26	1.72
2/10/2024	3:30:00	6.45	5.77	2.37
2/10/2024	3:45:00	6.52	5.94	1.98
2/10/2024	4:00:00	6.60	5.87	1.95
2/10/2024	4:15:00	6.45	6.09	2.48
2/10/2024	4:30:00	6.52	6.01	2.48
2/10/2024	4:45:00	5.01	5.92	2.04
2/10/2024	5:00:00	5.44	6.19	2.61
2/10/2024	5:15:00	6.50	6.47	4.19
2/10/2024	5:30:00	6.07	6.82	3.80
2/10/2024	5:45:00	5.05	7.10	3.32
2/10/2024	6:00:00	6.42	6.94	4.87
2/10/2024	6:15:00	6.12	6.88	4.06
2/10/2024	6:30:00	6.63	7.24	5.03
2/10/2024	6:45:00	6.84	6.93	4.99
2/10/2024	7:00:00	6.99	6.32	4.90
2/10/2024	7:15:00	6.75	6.48	5.08
2/10/2024	7:30:00	6.76	6.27	5.82
2/10/2024	7:45:00	6.68	6.63	4.90
2/10/2024	8:00:00	6.11	6.54	4.87
2/10/2024	8:15:00	5.79	6.57	5.47
2/10/2024	8:30:00	5.67	6.25	5.38
2/10/2024	8:45:00	5.39	6.68	4.90
2/10/2024	9:00:00	5.50	6.54	5.43
2/10/2024	9:15:00	5.27	6.06	5.05
2/10/2024	9:30:00	5.79	6.32	5.67
2/10/2024	9:45:00	6.21	6.94	4.88
2/10/2024	10:00:00	6.40	6.53	4.81
2/10/2024	10:15:00	6.48	6.78	3.69
2/10/2024	10:30:00	6.47	6.62	5.30
2/10/2024	10:45:00	6.63	7.08	4.08
2/10/2024	11:00:00	6.68	6.60	4.76
2/10/2024	11:15:00	6.61	6.83	3.31
2/10/2024	11:30:00	6.80	7.17	5.19
2/10/2024	11:45:00	6.78	6.85	5.61

Note: Data has not been validated

February 4 - February 11, 2024

Date	Time	DO (mg/L)		
		Ambient	W TB4	S CSB
2/10/2024	12:00:00	6.88	7.23	3.78
2/10/2024	12:15:00	7.04	7.08	5.62
2/10/2024	12:30:00	7.10	7.45	3.04
2/10/2024	12:45:00	7.09	7.68	2.65
2/10/2024	13:00:00	7.25	7.70	2.87
2/10/2024	13:15:00	7.16	8.00	3.93
2/10/2024	13:30:00	7.31	8.70	3.58
2/10/2024	13:45:00	7.57	7.42	3.42
2/10/2024	14:00:00	7.74	7.69	4.51
2/10/2024	14:15:00	7.64	8.03	5.26
2/10/2024	14:30:00	7.66	8.41	5.58
2/10/2024	14:45:00	7.80	8.93	7.09
2/10/2024	15:00:00	8.10	8.38	4.10
2/10/2024	15:15:00	8.25	8.09	5.49
2/10/2024	15:30:00	7.99	6.13	5.74
2/10/2024	15:45:00	8.03	4.76	6.69
2/10/2024	16:00:00	7.71	5.97	4.19
2/10/2024	16:15:00	7.35	7.17	4.21
2/10/2024	16:30:00	6.90	7.56	2.15
2/10/2024	16:45:00	6.93	8.30	2.70
2/10/2024	17:00:00	6.54	6.64	3.82
2/10/2024	17:15:00	7.32	8.16	3.59
2/10/2024	17:30:00	6.66	7.19	4.42
2/10/2024	17:45:00	7.01	8.13	5.12
2/10/2024	18:00:00	7.79	7.94	5.24
2/10/2024	18:15:00	7.92	7.83	5.61
2/10/2024	18:30:00	7.81	7.91	5.84
2/10/2024	18:45:00	8.01	7.75	5.62
2/10/2024	19:00:00	7.99	7.92	4.82
2/10/2024	19:15:00	7.94	8.06	6.52
2/10/2024	19:30:00	8.03	7.91	5.92
2/10/2024	19:45:00	8.12	7.64	6.24
2/10/2024	20:00:00	7.78	7.81	6.31
2/10/2024	20:15:00	7.26	7.44	6.60
2/10/2024	20:30:00	7.36	7.50	6.37
2/10/2024	20:45:00	7.28	7.33	5.93
2/10/2024	21:00:00	6.99	7.36	5.75
2/10/2024	21:15:00	6.97	6.85	6.24
2/10/2024	21:30:00	7.13	7.45	6.07
2/10/2024	21:45:00	6.58	7.34	6.94
2/10/2024	22:00:00	7.19	7.15	7.10
2/10/2024	22:15:00	7.03	7.05	6.67
2/10/2024	22:30:00	6.77	7.44	5.85
2/10/2024	22:45:00	6.85	7.48	6.16
2/10/2024	23:00:00	7.05	7.53	6.47
2/10/2024	23:15:00	7.22	7.34	5.58
2/10/2024	23:30:00	7.12	7.87	5.36
2/10/2024	23:45:00	7.16	7.83	6.13

Note: Data has not been validated