

**GOWANUS CANAL SUPERFUND SITE  
RTA1 REMEDIAL CONSTRUCTION  
Water Quality Monitoring Weekly Data Summary**

**PERIOD: March 25 – March 29, 2024**

**Date of Report: April 2, 2024**

## **Report Contents**

- Scope of Monitoring
- Report of Exceedances
- Turbidity Buoy Data
- Dissolved Oxygen Monitoring Data
- Summary of Visual Observations

*Prepared by*

**B&B Engineers & Geologists**   
of new york, p.c.

*an affiliate of Geosyntec Consultants*

1255 Roberts Blvd, Suite 200  
Kennesaw, GA 30144  
Project Number JR0289A

## **1. SCOPE OF MONITORING**

### **1.1 Initial Buoy Locations**

In accordance with the Water Quality Monitoring Plan for In-waterway Construction Activities (WQMP) three turbidity buoys were deployed to monitor turbidity related to dredging activities. One turbidity buoy was deployed just south of the 3<sup>rd</sup> Street Bridge outside of the air curtain and traditional turbidity curtain and was referred to as the 3<sup>rd</sup> Street Sentinel Buoy. A second turbidity buoy was deployed just south of Carroll St Bridge to monitor dredging activities north of Carroll Street Bridge and was referred to as the Carroll Street Sentinel Buoy. The third turbidity buoy was deployed in the Fourth Street Turning Basin (TB4) in order to monitor background turbidity unaffected by in-water construction activities and was referred to as the Ambient Buoy.

Each turbidity buoy was initially equipped with a YSI EXO3 water quality meter with optical turbidity sensor. The buoys were field calibrated and programmed such that readings were collected every 15 minutes. After each measurement, the turbidity data were transmitted to a File Transfer Portal (FTP) site via telemetry.

### **1.2 Summary of Monitoring Adjustments during Construction**

- On January 22, 2021, prior to dredging north of the Union Street Bridge, a fourth turbidity buoy was deployed just south of the Union Street Bridge and was referred to as the Union Street Sentinel Buoy. This fourth turbidity buoy was removed prior to the start of pipe pile installation.
- On Wednesday, September 22, 2021, the Carroll Street Sentinel Buoy was relocated to the west side of the canal where Degraw Street intersects the canal to monitor cofferdam removal activities conducted in the vicinity of the Flushing Tunnel. This buoy was renamed the Degraw Street Sentinel Buoy during cofferdam removal activities.
- On October 14, 2021, the Degraw Street Sentinel Buoy was removed from the canal for servicing. On October 20, 2021, the Degraw Street Sentinel Buoy was redeployed to its position south of the Carroll Street Bridge and was renamed to the Carroll Street Sentinel Buoy.
- On November 15, 2021, the Carroll Street Sentinel Buoy was moved to the Union Street Bridge and renamed the Union Street Sentinel Buoy. On December 3, 2021, the Union Street Buoy was removed from the canal for servicing and re-deployed at 3<sup>rd</sup> Street Bridge in preparation for the resumption of ISS operations. On December 8, 2021, a sentinel buoy was re-deployed just south of the Carroll Street Bridge.
- Since December 8, 2021, the sentinel buoy deployed at the northern-most portion of the canal has alternated positioning between the Union Street Bridge and Carroll Street Bridge locations based on the in-canal construction activities being conducted at any given time.
- On January 9, 2023, the Carroll Street Sentinel Buoy was moved to the Third Street Bridge location and renamed the Third Street Sentinel Buoy. Additionally, the former Third Street Sentinel Buoy was removed from the canal for servicing.

- On February 6, 2023, the newly serviced Third Street Sentinel Buoy was reinstalled at Third Street Bridge, and the former Carroll Street Sentinel Buoy was reinstalled at Carroll Street Bridge.
- The Ambient Buoy was removed from service on Friday, February 17, 2023, due to a faulty communications system. Following investigation into the cause of the fault and the appropriate repairs made, the Ambient Buoy was returned to service on Thursday, April 13, 2023. Due to similar issues, the Ambient Buoy was removed from service again on Monday, April 24, 2023, before being redeployed on Friday, May 12, 2023, and again removed from service on Monday, May 15, 2023, before being redeployed on Monday, June 12, 2023.
- On Thursday April 13, 2023, the Carroll Street Sentinel Buoy was assessed to be within 100ft of in-canal construction activities being conducted at Carroll Street Bridge, and consequently was repositioned to the North Third Street Sentinel Buoy location.
- Data from the Third Street Sentinel Buoy was not reported from Thursday June 1, 2023 to June 2, 2023 due to a power failure and/or faulty communications system preventing transmission of readings. The Third Street Sentinel Buoy was returned to service with data collection resuming on June 5, 2023.
- On Wednesday, July 26, 2023, a fourth monitoring buoy was deployed just north of the Union Street Bridge to monitor dissolved oxygen (DO) in RTA1.
- On Tuesday, September 19, 2023, the fourth monitoring buoy (originally deployed north of the Union Street Bridge to monitor DO) was moved to just south of the Carroll Street Bridge due to ongoing in-waterway construction activities within 100 feet. In addition to dissolved oxygen, this served as an additional sentinel buoy and was referred to as the South Carroll Street Bridge Sentinel Buoy.
- On Thursday, November 2, 2023, the monitoring buoy deployed just south of the Third Street Bridge was removed from the canal to conduct maintenance and necessary repairs.
- On Monday, November 13, 2023, the monitoring buoy most recently deployed south of the Carroll Street Bridge was moved to just south of the Union Street Bridge due to ongoing in-waterway construction activities within 100 feet. In addition to dissolved oxygen, this served as an additional sentinel buoy and was referred to as the South Union Street Bridge Sentinel Buoy.
- On Tuesday, December 19, 2023, the monitoring buoy most recently deployed south of the Union Street Bridge was moved back to just south of the Carroll Street Bridge (referred to as the South Carroll Street Bridge Sentinel Buoy) due to ongoing in-waterway construction activities within 100 feet of Union Street Bridge.

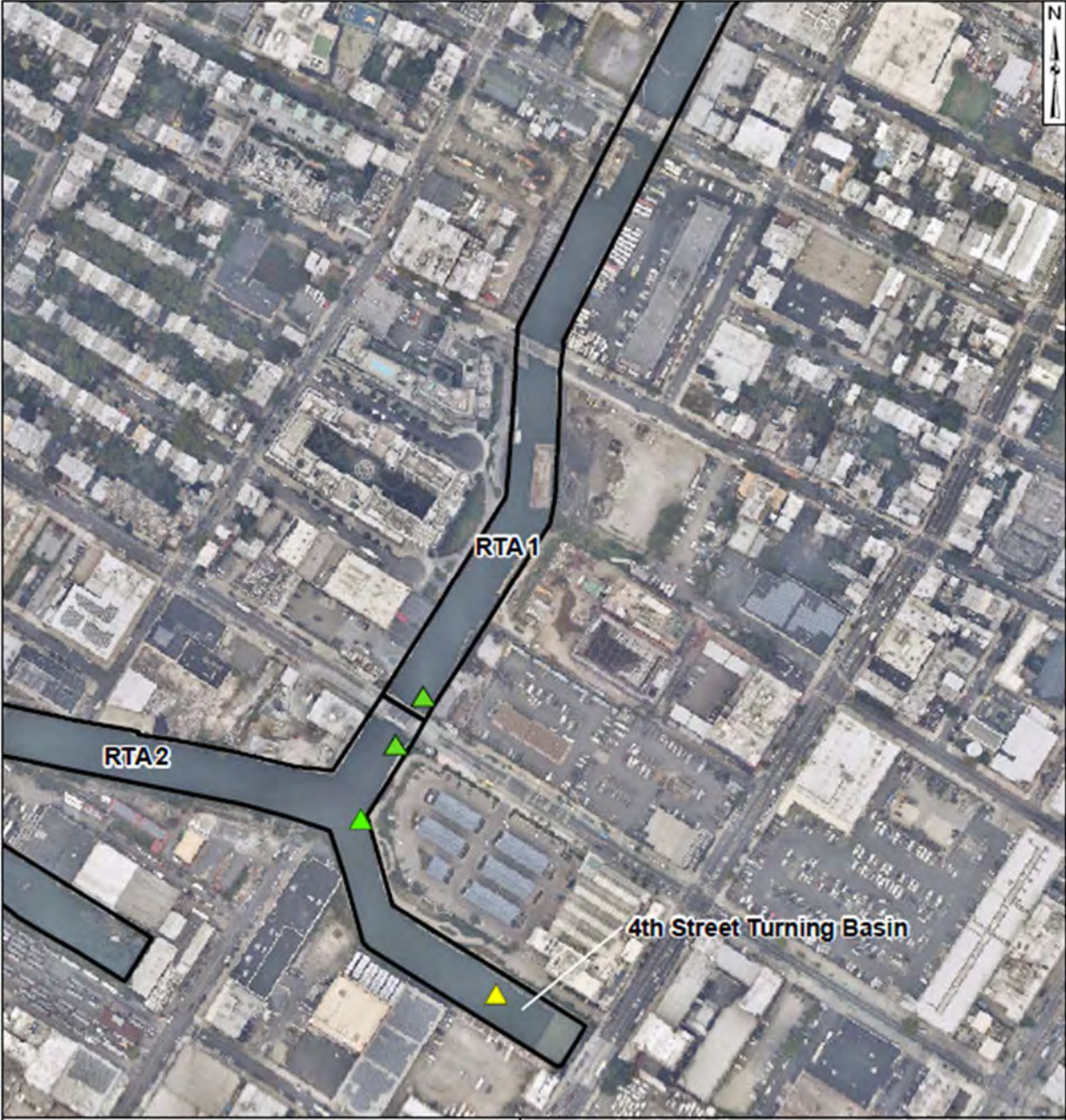
- On Monday, February 12, 2024, the monitoring buoy most recently deployed south of the Carroll Street Bridge was moved to just south of the Third Street Bridge (referred to as the South Third Street Bridge Sentinel Buoy) due to ongoing in-waterway construction activities progressing south of the Carroll Street Bridge and into the south pool.
- On Wednesday, March 27, 2024, the monitoring buoy deployed south of the Third Street Bridge was moved to just north of the Third Street Bridge (referred to as the North Third Street Bridge Sentinel Buoy) due to ongoing in-waterway construction activities on the south side of the Third Street Bridge.

### **1.3 Current Reporting Period Scope of Monitoring**

For the week of March 25, 2024, three turbidity buoys were deployed consisting of the Ambient Turbidity Buoy located in the eastern end of TB4, the West TB4 Sentinel Buoy located just outside of any sediment and floatables controls at the southern end of RTA1, and the South/North Third Street Bridge Sentinel Buoy located just south/north of the Third Street Bridge. The North Third Street Buoy was previously located just south of the Third Street Bridge, and was moved to its current location on Wednesday March 27, 2024. Additionally, DO measurements were recorded by the turbidity buoys.

All readings from buoys were transmitted via telemetry at 15-minute intervals. The instrument used to collect turbidity and DO from the buoys is an In-Situ VuLink (telemetry) and AquaTroll500 (sonde), equipped with optical sensors capable of reading turbidity levels with an accuracy of +/-0.5 NTU and DO levels with an accuracy of +/-0.1 mg/L.

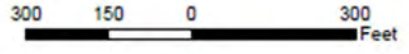
Visual observations of turbidity and sheen are summarized in Section 5.



\\Reservoir\ngis\Gowanus\RTA\_02\_GEW\mxd\Canal\wides\Turbidity Buoy Locations.mxd, 11/23/2020

**Legend**

- ▲ Ambient Buoy
- ▲ Sentinel Buoy
- RTA Boundary



**Water Quality Monitoring  
Buoy Locations**

Gowanus Canal, Brooklyn, NY

**B&B Engineers & Geologists**  
 of new york, p.c.  
*an affiliate of Geosyntec Consultants*

Brooklyn, NY

March 2024

**Figure**  
**1**

## 2. REPORT OF EXCEEDANCES

No exceedances to the quantitative action criterion were observed during the reporting period due to remedial construction-related activities. At the South Third Street Sentinel Buoy and West TB4 Buoy, turbidity readings exceeded the quantitative trigger criterion on Tuesday and Wednesday of the reporting period as a result of temporarily suspended sediments from passing vessels.

- **Trigger criterion** – Any of the following:
  - The rolling average of the relevant sentinel buoy turbidity measurements over a one-hour period exceeds the rolling average of the ambient buoy turbidity measurements by 20 NTU excluding any eliminated outlier measurements and in-waterway construction activities cannot be immediately excluded as the source following consultation with EPA; or
  - Either an oil sheen or a turbidity plume is visually observed at the relevant sentinel buoy and in-waterway construction activities are readily identified as the source.
- **Action criterion** – Any of the following:
  - The rolling average of the turbidity measurements of the sentinel buoy outside of RTA1 over a one-hour period exceeds the rolling average of the ambient buoy turbidity measurements by 40 NTU excluding any eliminated outlier measurements and in-waterway construction activities cannot be immediately excluded as the source following consultation with EPA; or
  - Either an oil sheen or a turbidity plume is visually observed outside of RTA1 and any deployed engineering controls and in-waterway construction activities are readily identified as the source.

An outlier is defined as a reading that is outside the range of 50 to 200 percent of the average of the three previous readings. In addition, to be considered an outlier, the subsequent reading must return to a range of 75 to 133 percent of the average of the three readings preceding the outlier.

### 2.1 Response to Criteria Exceedances

The trigger level criterion serves to provide early notification to the contractor of construction activities that may lead to an exceedance of the action level criterion. In the event of an exceedance to the trigger criterion, the contractor will not be stopped, and the contractor will be directed to investigate the source of the exceedance and evaluate Best Management Practices (BMPs). In the event of an exceedance to the action level criterion, in-waterway construction activities may be slowed or temporarily suspended as necessary while the contractor investigates the source of the exceedance and appropriate mitigation and corrective measures are determined. A more detailed description of responses to exceedances of the trigger and action level criteria is provided in Section 4.2 of the WQMP.

No exceedances to the quantitative action criterion were observed during the reporting period due to remedial construction-related activities. At the South Third Street Sentinel Buoy and West TB4

Buoy, turbidity readings exceeded the quantitative trigger criterion on Tuesday and Wednesday of the reporting period as a result of temporarily suspended sediments from passing vessels.

### 3. TURBIDITY BUOY DATA

The following section provides turbidity data for the sentinel and ambient turbidity buoys from 7 AM to 6 PM from March 25 – March 29, 2024.

No exceedances to the quantitative action criterion were observed during the reporting period due to remedial construction-related activities. At the South Third Street Sentinel Buoy and West TB4 Buoy, turbidity readings exceeded the quantitative trigger criterion on Tuesday and Wednesday of the reporting period as a result of temporarily suspended sediments from passing vessels.

At the South Third Street Sentinel Buoy, elevated turbidity readings were recorded on Monday of the reporting period due to construction activities with 100 ft of the buoy.

Instrument error resulted in erroneous data being discarded from the Ambient Buoy prior to being brought back online at approximately 2:00 PM on Wednesday of the reporting period following correction of the buoy instrumentation. Any readings from the Ambient Buoy readings recorded prior to this correction were discarded due to instrument error.

Instrument error resulted in erroneous data being discarded from the North Third Street Sentinel Buoy on Friday of the reporting period. Prior inspection and maintenance of the equipment had been conducted on Wednesday of the reporting period, during which no faults were found. Investigations into the cause of the erroneous readings remain ongoing.

**Table 1** below provides a summary of the turbidity data for the reporting period.

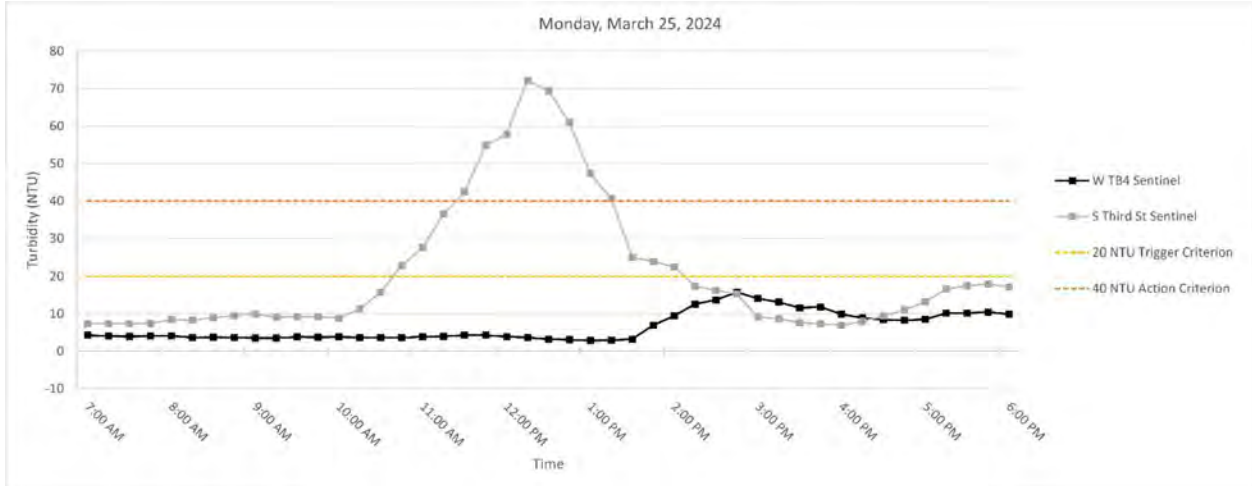
Date	Average Rolling Average Difference (NTU)			Maximum Rolling Average Difference (NTU)		
	W TB4 - Ambient	S Third St - Ambient	N Third St - Ambient	W TB4 - Ambient	S Third St - Ambient	N Third St - Ambient
Monday, March 25, 2024	--	--	--	--	--	--
Tuesday, March 26, 2024	--	--	--	--	--	--
Wednesday, March 27, 2024	12.87	--	8.94	22.20	--	10.94
Thursday, March 28, 2024	-3.31	-3.03	--	5.77	1.95	--
Friday, March 29, 2024	-0.58	3.32	--	6.21	15.85	--

**Table 1.** Daily average and maximum differences between the rolling average turbidity readings from RTA1 sentinel buoys and the ambient buoy between 7 AM and 6 PM.



### 3.1 Monday, March 25, 2024

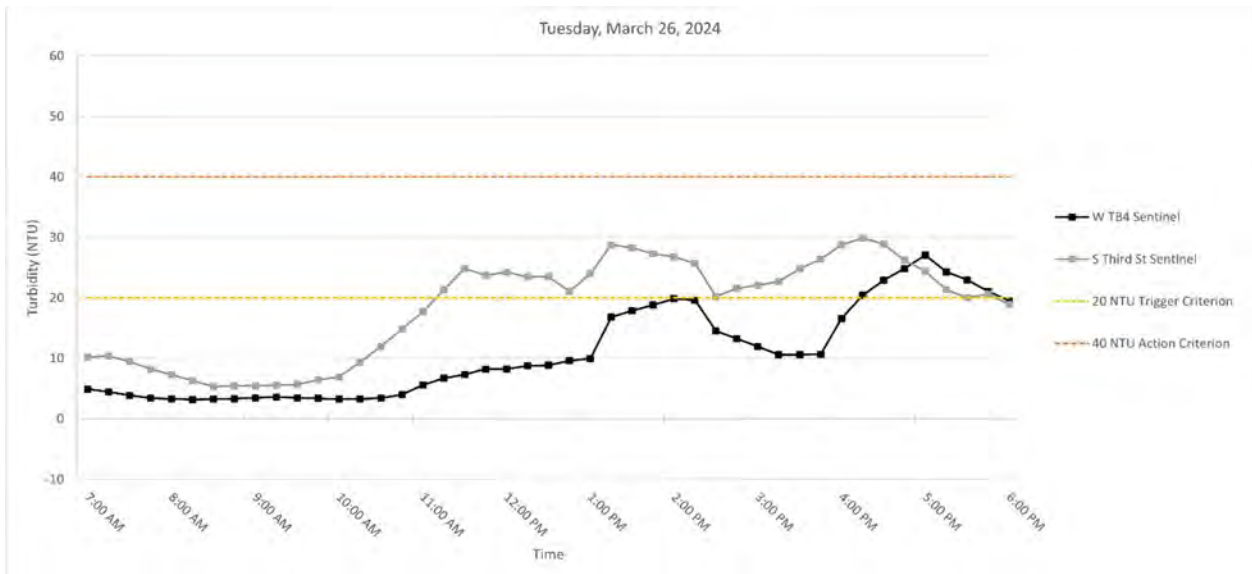
**Figure 3.** Hourly rolling average turbidity readings on Monday, March 25, 2024, from 7 AM to 6 PM.



**Note:** No exceedances were observed. At the South Third Street Buoy, elevated turbidity readings were recorded due to construction activities within 100 ft of the buoy. Outlier turbidity readings above 20 NTU were detected at the West TB4 Buoy and South Third Street Buoy. Ambient Buoy readings were discarded due to instrument error.

### 3.2 Tuesday, March 26, 2024

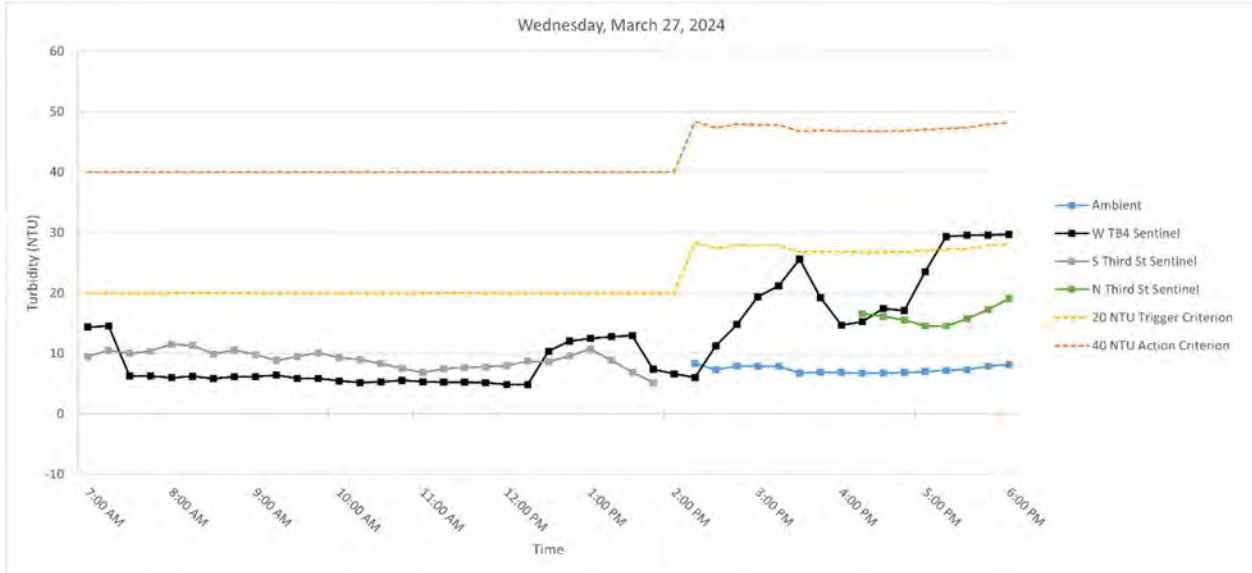
**Figure 3.** Hourly rolling average turbidity readings on Tuesday, March 26, 2024, from 7 AM to 6 PM.



**Note:** At the South Third Street Sentinel Buoy and West TB4 Buoy, turbidity readings exceeded the quantitative trigger criterion as a result of temporarily suspended sediments from passing vessels. Outlier turbidity readings above 20 NTU were detected at the South Third Street Buoy. Ambient Buoy readings were discarded due to instrument error.

### 3.3 Wednesday, March 27, 2024

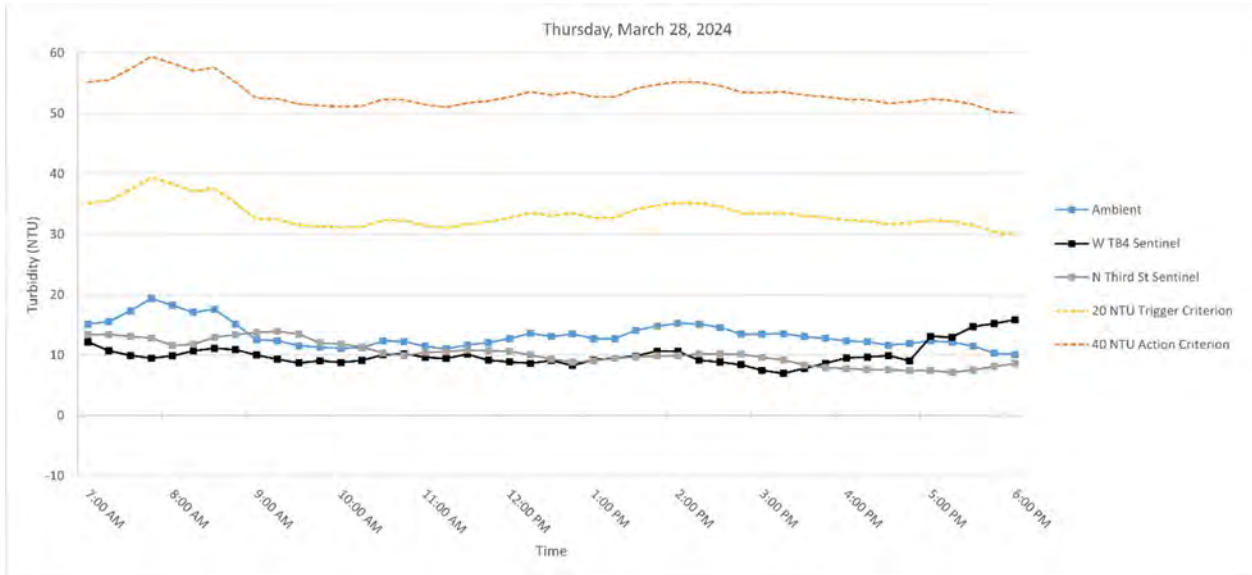
**Figure 4.** Hourly rolling average turbidity readings on Wednesday, March 27, 2024, from 7 AM to 6 PM.



**Note:** At the West TB4 Buoy, turbidity readings exceeded the quantitative trigger criterion as a result of temporarily suspended sediments from passing vessels. Outlier turbidity readings above 20 NTU were detected at the North Third Street Buoy and Ambient Buoy. The South Third Street Buoy was removed for routine maintenance. The Ambient Buoy was brought back online at approximately 2:00 PM following correction of the buoy instrumentation. Any readings from the Ambient Buoy readings recorded prior to this correction were discarded due to instrument error.

### 3.4 Thursday, March 28, 2024

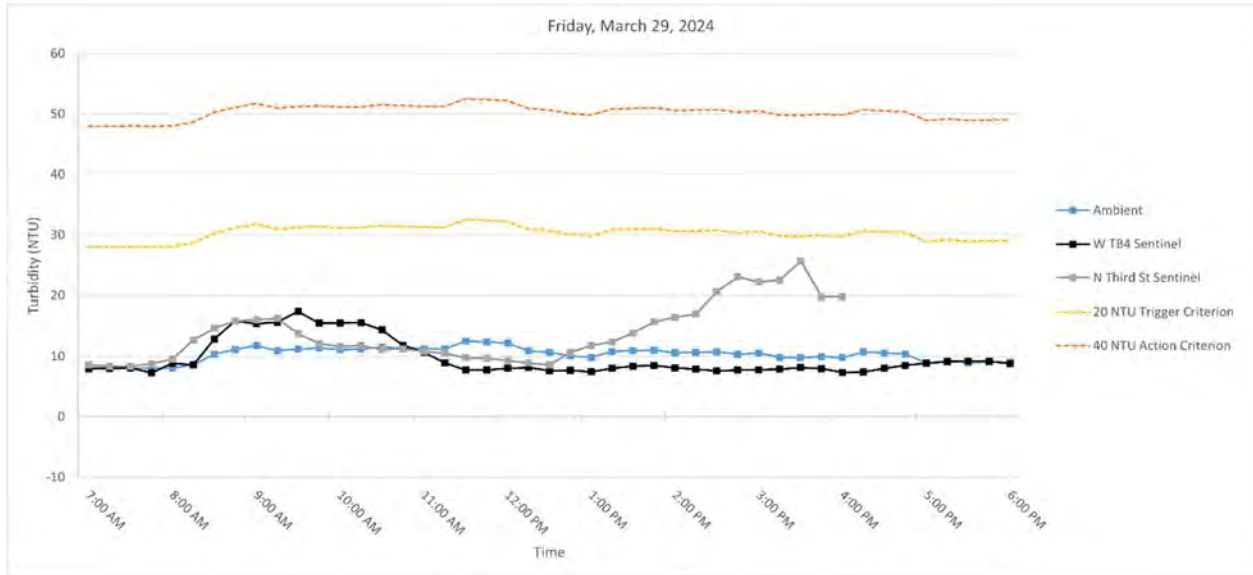
**Figure 5.** Hourly rolling average turbidity readings on Thursday, March 28, 2024, from 7 AM to 6 PM.



**Note:** No exceedances were observed. Outlier turbidity readings above 20 NTU were detected at the North Third Street Buoy and Ambient Buoy.

### 3.5 Friday, March 29, 2024

**Figure 6.** Hourly rolling average turbidity readings on Friday, March 29, 2024, from 7 AM to 6 PM.



**Note:** No exceedances were observed. Outlier turbidity readings above 20 NTU were detected at the North Third Street Buoy and West TB4 Buoy. North Third Street Buoy readings were discarded after 4:00 PM due to instrument error.

#### 4. DISSOLVED OXYGEN MONITORING DATA

Dissolved oxygen measured at the monitoring buoys throughout the reporting period is provided in Appendix B and summarized below:

- Ambient
  - Average = 6.51 (+/-0.1) mg/L
  - Min = 3.15 (+/-0.1) mg/L on Friday March 29, 2024
  - Max = 9.56 (+/-0.1) mg/L on Sunday March 24, 2024
  
- West Turning Basin 4 (W TB4)
  - Average = 7.20 (+/-0.1) mg/L
  - Min = 3.35 (+/-0.1) mg/L on Friday March 29, 2024
  - Max = 10.72 (+/-0.1) mg/L on Saturday March 30, 2024
  
- South Third Street Bridge (S 3SB)
  - Average = 6.73 (+/-0.1) mg/L
  - Min = 3.73 (+/-0.1) mg/L on Wednesday March 27, 2024
  - Max = 8.91 (+/-0.1) mg/L on Sunday March 24, 2024
  
- North Third Street Bridge (N 3SB)
  - Average = 5.39 (+/-0.1) mg/L
  - Min = 2.64 (+/-0.1) mg/L on Friday March 29, 2024
  - Max = 9.32 (+/-0.1) mg/L on Saturday March 30, 2024

## 5. SUMMARY OF VISUAL OBSERVATIONS

Visual indications of elevated turbidity were periodically observed during the reporting period attributable to capping activities, typically due to placement of gravel (**Figures 7 & 12**) and temporarily suspended sediment from passing vessels (**Figures 9, 10, & 12**). The turbidity curtain was periodically installed south of the Third Street Bridge to reduce migration of sediments into RTA1 (**Figures 8 & 11**). No sheens attributable to in-canal work operations were observed above background conditions.

Significant sheening was observed within RTA1 on two occasions during the reporting period that were unrelated to in-canal work operations. These sheen events are summarized below:

- Prior to any remedial construction activities on Tuesday morning of the reporting period a sheen was observed around Carroll Street Bridge migrating south with a northerly wind and a turning high tide (see **Figure 13**). The sheen appeared to originate from an unknown source in the north pool within RTA1.
- Prior to any remedial construction activities on Wednesday morning of the reporting period a sheen was observed around Carroll Street Bridge migrating south with an easterly wind and an incoming tide (see **Figure 14**). The sheen appeared to originate from an unknown source in the north pool within RTA1.

Photographs depicting conditions relevant to these events are shown below.



**Figure 7.** Visual indication of elevated turbidity as a result of gravel placement in and around Third Street Bridge at 12:15 PM on Monday, March 25, 2024.



**Figure 8.** Turbidity curtain installed south of the Third Street Bridge at 1:45 PM on Monday, March 25, 2024.



**Figure 9.** Visual indication of elevated turbidity outside RTA1 as a result of temporarily suspended sediments from passing vessels at 12:45 PM on Tuesday, March 26, 2024.



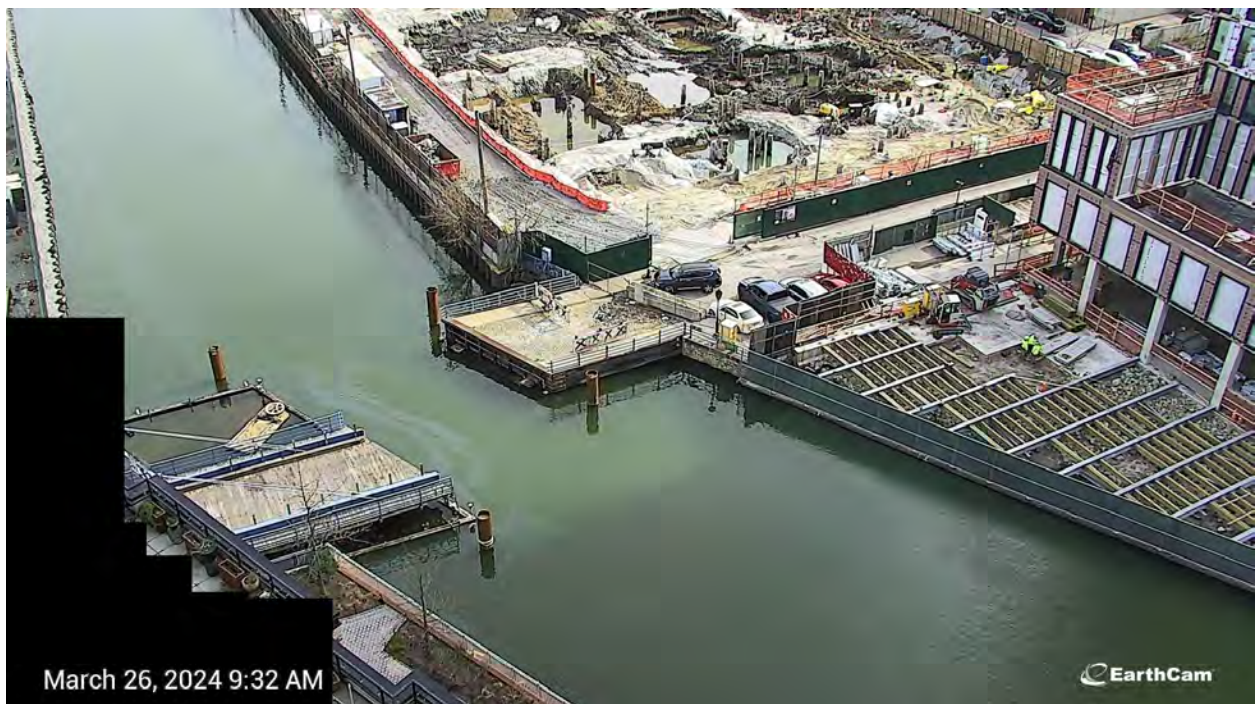
**Figure 10.** Visual indication of elevated turbidity outside RTA1 as a result of temporarily suspended sediments from passing vessels at 1:00 PM on Tuesday, March 26, 2024.



**Figure 11.** Turbidity curtain installed south of the Third Street Bridge at 1:30 PM on Tuesday, March 26, 2024.

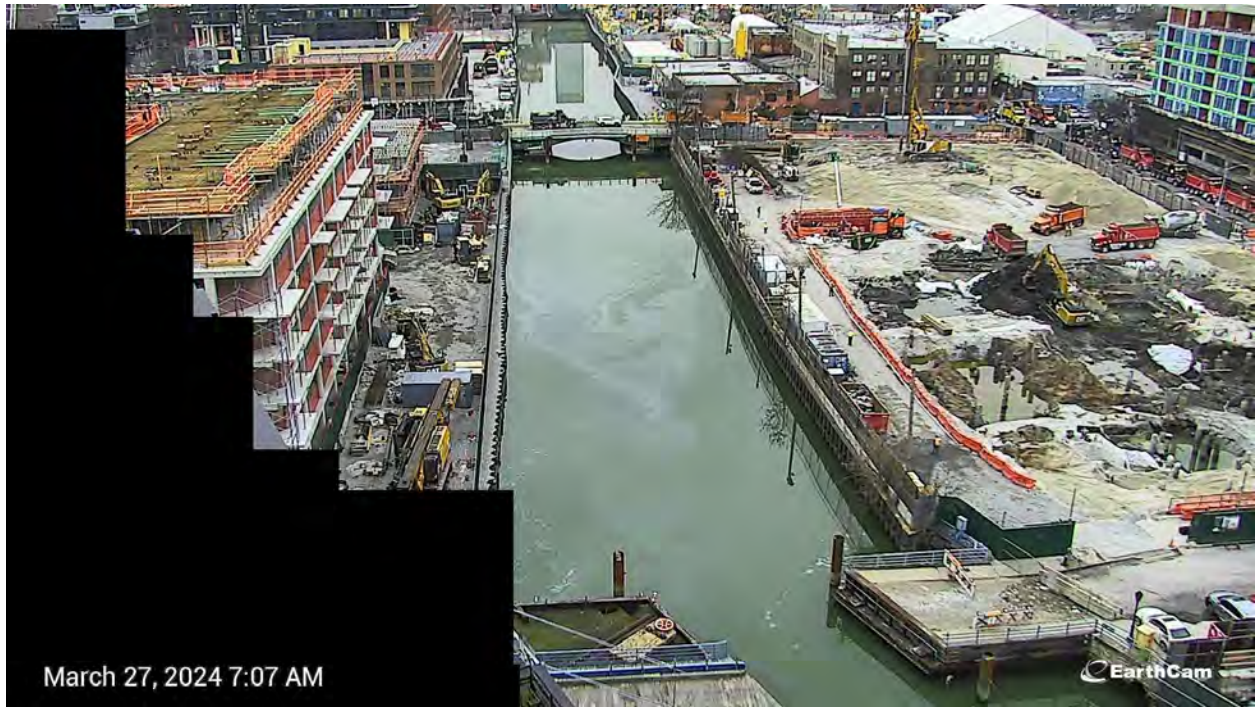


**Figure 12.** Visual indication of elevated turbidity as a result of gravel placement in and around Third Street Bridge and temporarily suspended sediments from passing vessels at 12:15 PM on Wednesday, March 27, 2024.



**Figure 13.** At 9:30 AM on Tuesday, March 26, 2024, a sheen was observed around Carroll Street Bridge migrating south with a northeasterly wind and a turning high tide.





**Figure 14.** At 7:00 AM on Wednesday, March 27, 2024, a sheen was observed around Carroll Street Bridge migrating south with an easterly wind and an incoming tide (prior to any remedial construction activities).

**APPENDIX A**  
**Turbidity Data Tables**

## Monday, March 25, 2024

Time	Turbidity (NTU)			Rolling Average Turbidity (NTU)			Difference (NTU)	
	Ambient	W TB4	S Third Street	Ambient	W TB4	S Third Street	W TB4 - Ambient	S 3SB - Ambient
7:00:00	--	5.06	6.89	--	4.29	7.36	--	--
7:15:00	--	3.66	6.93	--	4.09	7.38	--	--
7:30:00	--	--	7.75	--	3.97	7.37	--	--
7:45:00	--	3.66	7.61	--	4.09	7.48	--	--
8:00:00	--	4.23	12.89	--	4.15	8.42	--	--
8:15:00	--	3.25	6.77	--	3.70	8.39	--	--
8:30:00	--	3.81	9.89	--	3.74	8.98	--	--
8:45:00	--	3.36	10.37	--	3.66	9.51	--	--
9:00:00	--	3.09	9.76	--	3.55	9.94	--	--
9:15:00	--	4.02	8.73	--	3.50	9.10	--	--
9:30:00	--	4.96	7.23	--	3.85	9.20	--	--
9:45:00	--	3.23	9.99	--	3.73	9.22	--	--
10:00:00	--	3.71	8.59	--	3.80	8.86	--	--
10:15:00	--	2.61	21.94	--	3.71	11.30	--	--
10:30:00	--	3.90	31.31	--	3.68	15.81	--	--
10:45:00	--	4.76	42.73	--	3.64	22.91	--	--
11:00:00	--	4.39	33.31	--	3.87	27.58	--	--
11:15:00	--	4.13	53.42	--	3.96	36.54	--	--
11:30:00	--	4.11	51.41	--	4.26	42.44	--	--
11:45:00	--	4.15	93.22	--	4.31	54.82	--	--
12:00:00	--	2.76	--	--	3.91	57.84	--	--
12:15:00	--	3.40	90.78	--	3.71	72.21	--	--
12:30:00	--	1.85	42.67	--	3.25	69.52	--	--
12:45:00	--	3.24	17.10	--	3.08	60.94	--	--
13:00:00	--	2.91	38.90	--	2.83	47.36	--	--
13:15:00	--	3.36	13.60	--	2.95	40.61	--	--
13:30:00	--	4.74	13.20	--	3.22	25.10	--	--
13:45:00	--	20.43	37.20	--	6.94	24.00	--	--
14:00:00	--	15.71	9.94	--	9.43	22.57	--	--
14:15:00	--	18.60	12.76	--	12.57	17.34	--	--
14:30:00	--	9.01	8.33	--	13.70	16.29	--	--
14:45:00	--	15.06	8.38	--	15.76	15.32	--	--
15:00:00	--	12.30	6.21	--	14.14	9.12	--	--
15:15:00	--	10.68	7.52	--	13.13	8.64	--	--
15:30:00	--	10.89	8.00	--	11.59	7.69	--	--
15:45:00	--	10.30	6.35	--	11.85	7.29	--	--
16:00:00	--	5.17	6.62	--	9.87	6.94	--	--
16:15:00	--	7.53	11.49	--	8.91	8.00	--	--
16:30:00	--	8.26	14.73	--	8.43	9.44	--	--
16:45:00	--	10.22	15.90	--	8.30	11.02	--	--
17:00:00	--	11.30	17.34	--	8.50	13.22	--	--
17:15:00	--	13.76	23.64	--	10.21	16.62	--	--
17:30:00	--	7.30	16.14	--	10.17	17.55	--	--
17:45:00	--	9.96	16.65	--	10.51	17.93	--	--
18:00:00	--	7.16	12.27	--	9.90	17.21	--	--

## Tuesday, March 26, 2024

Time	Turbidity (NTU)			Rolling Average Turbidity (NTU)			Difference (NTU)	
	Ambient	W TB4	S Third Street	Ambient	W TB4	S Third Street	W TB4 - Ambient	S 3SB - Ambient
7:00:00	--	4.35	9.80	--	4.92	10.22	--	--
7:15:00	--	3.20	10.36	--	4.46	10.40	--	--
7:30:00	--	3.25	5.17	--	3.87	9.47	--	--
7:45:00	--	2.35	5.77	--	3.39	8.22	--	--
8:00:00	--	3.26	5.27	--	3.28	7.27	--	--
8:15:00	--	3.76	4.93	--	3.16	6.30	--	--
8:30:00	--	3.44	5.49	--	3.21	5.33	--	--
8:45:00	--	3.83	5.55	--	3.33	5.40	--	--
9:00:00	--	2.93	5.99	--	3.44	5.45	--	--
9:15:00	--	4.06	5.67	--	3.60	5.53	--	--
9:30:00	--	3.06	5.57	--	3.47	5.65	--	--
9:45:00	--	2.91	9.19	--	3.36	6.39	--	--
10:00:00	--	3.19	8.18	--	3.23	6.92	--	--
10:15:00	--	3.04	17.91	--	3.25	9.30	--	--
10:30:00	--	4.86	18.97	--	3.41	11.96	--	--
10:45:00	--	5.83	19.70	--	3.96	14.79	--	--
11:00:00	--	10.91	23.64	--	5.56	17.68	--	--
11:15:00	--	8.89	26.23	--	6.70	21.29	--	--
11:30:00	--	5.92	35.62	--	7.28	24.83	--	--
11:45:00	--	9.49	13.51	--	8.21	23.74	--	--
12:00:00	--	5.86	22.15	--	8.21	24.23	--	--
12:15:00	--	13.59	19.72	--	8.75	23.45	--	--
12:30:00	--	9.32	26.53	--	8.84	23.51	--	--
12:45:00	--	9.71	23.44	--	9.60	21.07	--	--
13:00:00	--	11.32	28.09	--	9.96	23.99	--	--
13:15:00	--	40.12	46.01	--	16.81	28.76	--	--
13:30:00	--	18.91	17.32	--	17.88	28.28	--	--
13:45:00	--	13.95	21.57	--	18.80	27.29	--	--
14:00:00	--	14.87	20.86	--	19.83	26.77	--	--
14:15:00	--	10.14	22.75	--	19.60	25.70	--	--
14:30:00	--	14.62	18.54	--	14.50	20.21	--	--
14:45:00	--	12.65	24.12	--	13.24	21.57	--	--
15:00:00	--	7.42	24.12	--	11.94	22.08	--	--
15:15:00	--	8.01	23.94	--	10.57	22.69	--	--
15:30:00	--	10.20	33.34	--	10.58	24.81	--	--
15:45:00	--	15.09	--	--	10.67	26.38	--	--
16:00:00	--	42.22	33.67	--	16.59	28.77	--	--
16:15:00	--	26.41	28.55	--	20.38	29.87	--	--
16:30:00	--	20.55	20.13	--	22.89	28.92	--	--
16:45:00	--	20.00	22.47	--	24.85	26.21	--	--
17:00:00	--	26.20	17.10	--	27.07	24.39	--	--
17:15:00	--	28.35	18.40	--	24.30	21.33	--	--
17:30:00	--	19.72	22.00	--	22.96	20.02	--	--
17:45:00	--	11.11	23.24	--	21.07	20.64	--	--
18:00:00	--	12.11	13.49	--	19.50	18.85	--	--

## Wednesday, March 27, 2024

Time	Turbidity (NTU)				Rolling Average Turbidity (NTU)				Difference (NTU)		
	Ambient	W TB4	S Third Street	N Third Street	Ambient	W TB4	S Third Street	N Third Street	W TB4 - Ambient	S 3SB - Ambient	N 3SB - Ambient
7:00:00	--	6.41	9.98	--	--	14.35	9.47	--	--	--	--
7:15:00	--	7.25	13.62	--	--	14.57	10.52	--	--	--	--
7:30:00	--	5.53	6.55	--	--	6.25	10.02	--	--	--	--
7:45:00	--	5.93	12.49	--	--	6.26	10.37	--	--	--	--
8:00:00	--	4.70	15.23	--	--	5.96	11.57	--	--	--	--
8:15:00	--	7.69	8.65	--	--	6.22	11.31	--	--	--	--
8:30:00	--	5.30	6.78	--	--	5.83	9.94	--	--	--	--
8:45:00	--	7.20	9.79	--	--	6.17	10.59	--	--	--	--
9:00:00	--	6.03	8.56	--	--	6.19	9.80	--	--	--	--
9:15:00	--	5.89	10.45	--	--	6.42	8.85	--	--	--	--
9:30:00	--	4.93	11.91	--	--	5.87	9.50	--	--	--	--
9:45:00	--	5.40	9.87	--	--	5.89	10.12	--	--	--	--
10:00:00	--	5.11	5.65	--	--	5.47	9.29	--	--	--	--
10:15:00	--	4.68	6.96	--	--	5.20	8.97	--	--	--	--
10:30:00	--	6.37	7.28	--	--	5.30	8.34	--	--	--	--
10:45:00	--	6.14	7.91	--	--	5.54	7.54	--	--	--	--
11:00:00	--	4.23	6.24	--	--	5.31	6.81	--	--	--	--
11:15:00	--	4.80	9.07	--	--	5.25	7.49	--	--	--	--
11:30:00	--	4.68	7.76	--	--	5.25	7.65	--	--	--	--
11:45:00	--	6.18	7.71	--	--	5.21	7.74	--	--	--	--
12:00:00	--	4.41	9.31	--	--	4.86	8.02	--	--	--	--
12:15:00	--	4.09	9.62	--	--	4.83	8.69	--	--	--	--
12:30:00	--	32.55	8.64	--	--	10.38	8.61	--	--	--	--
12:45:00	--	12.88	12.67	--	--	12.02	9.59	--	--	--	--
13:00:00	--	8.55	13.39	--	--	12.50	10.73	--	--	--	--
13:15:00	10.50	5.79	--	--	10.50	12.77	--	--	2.27	--	--
13:30:00	7.37	5.08	--	--	8.94	12.97	--	--	4.03	--	--
13:45:00	6.06	4.64	--	--	7.98	7.39	--	--	-0.59	--	--
14:00:00	5.97	9.16	--	--	7.48	6.64	--	--	-0.83	--	--
14:15:00	11.93	5.58	--	--	8.37	6.05	--	--	-2.32	--	--
14:30:00	5.24	31.94	--	--	7.31	11.28	--	--	3.96	--	--
14:45:00	10.51	22.63	--	--	7.94	14.79	--	--	6.85	--	--
15:00:00	5.53	27.66	--	--	7.84	19.39	--	--	11.56	--	--
15:15:00	6.05	18.22	--	17.56	7.85	21.21	--	17.56	13.35	--	9.70
15:30:00	6.58	27.61	--	18.57	6.78	25.61	--	18.06	18.83	--	11.28
15:45:00	5.74	0.00	--	18.75	6.88	19.22	--	18.29	12.34	--	11.41
16:00:00	10.12	0.00	--	11.78	6.80	14.70	--	16.66	7.89	--	9.86
16:15:00	5.24	30.48	--	16.45	6.75	15.26	--	16.62	8.52	--	9.87
16:30:00	6.12	29.15	--	15.16	6.76	17.45	--	16.14	10.69	--	9.88
16:45:00	6.96	25.85	--	--	6.84	17.10	--	15.54	10.26	--	8.70
17:00:00	6.65	32.11	--	14.74	7.02	23.52	--	14.53	16.50	--	7.52
17:15:00	11.13	29.24	--	11.90	7.22	29.36	--	14.56	22.15	--	7.34
17:30:00	5.87	31.38	--	21.24	7.35	29.54	--	15.76	22.20	--	8.42
17:45:00	8.94	29.46	--	21.15	7.91	29.61	--	17.26	21.70	--	9.35
18:00:00	--	26.17	--	26.39	8.15	29.67	--	19.08	21.52	--	10.94

## Thursday, March 28, 2024

Time	Turbidity (NTU)			Rolling Average Turbidity (NTU)			Difference (NTU)	
	Ambient	W TB4	N Third Street	Ambient	W TB4	N Third Street	W TB4 - Ambient	N 35B - Ambient
7:00:00	20.40	6.97	11.60	15.17	12.15	13.43	-3.02	-1.73
7:15:00	11.51	7.89	12.24	15.52	10.71	13.40	-4.81	-2.12
7:30:00	26.86	9.88	10.84	17.32	9.95	13.09	-7.38	-4.23
7:45:00	23.04	13.20	11.68	19.39	9.47	12.83	-9.92	-6.56
8:00:00	9.52	11.41	--	18.27	9.87	11.59	-8.40	-6.68
8:15:00	14.34	11.23	12.41	17.06	10.72	11.79	-6.33	-5.27
8:30:00	14.17	9.85	16.89	17.59	11.12	12.95	-6.47	-4.63
8:45:00	14.72	8.84	12.45	15.16	10.91	13.36	-4.25	-1.80
9:00:00	9.90	8.61	13.31	12.53	9.99	13.76	-2.54	1.23
9:15:00	8.94	8.08	14.71	12.41	9.32	13.95	-3.09	1.54
9:30:00	9.99	8.15	10.10	11.54	8.71	13.49	-2.84	1.95
9:45:00	13.01	11.75	9.48	11.31	9.09	12.01	-2.23	0.70
10:00:00	13.80	7.36	11.44	11.13	8.79	11.81	-2.34	0.68
10:15:00	10.36	10.27	10.90	11.22	9.12	11.33	-2.10	0.11
10:30:00	14.60	12.69	9.93	12.35	10.04	10.37	-2.30	-1.98
10:45:00	9.44	9.02	7.84	12.24	10.22	9.92	-2.02	-2.32
11:00:00	9.14	8.87	12.05	11.47	9.64	10.43	-1.82	-1.03
11:15:00	11.63	6.40	12.00	11.03	9.45	10.54	-1.58	-0.49
11:30:00	13.71	13.65	12.44	11.70	10.13	10.85	-1.58	-0.85
11:45:00	16.28	7.85	9.26	12.04	9.16	10.72	-2.88	-1.32
12:00:00	12.76	7.57	7.56	12.70	8.87	10.66	-3.84	-2.04
12:15:00	--	7.84	8.81	13.59	8.66	10.01	-4.93	-3.58
12:30:00	9.37	8.58	8.79	13.03	9.10	9.37	-3.93	-3.66
12:45:00	15.67	9.42	9.80	13.52	8.25	8.84	-5.27	-4.68
13:00:00	13.14	12.72	10.26	12.74	9.23	9.04	-3.51	-3.69
13:15:00	--	8.93	9.80	12.73	9.50	9.49	-3.23	-3.24
13:30:00	18.22	9.56	9.83	14.10	9.84	9.70	-4.26	-4.40
13:45:00	12.02	12.76	9.59	14.76	10.68	9.86	-4.09	-4.91
14:00:00	17.62	9.17	9.74	15.25	10.63	9.84	-4.63	-5.41
14:15:00	12.71	5.48	12.03	15.14	9.18	10.20	-5.97	-4.95
14:30:00	12.27	7.32	9.54	14.57	8.86	10.15	-5.71	-4.42
14:45:00	12.81	7.29	9.80	13.49	8.40	10.14	-5.08	-3.35
15:00:00	11.86	8.15	7.10	13.46	7.48	9.64	-5.97	-3.81
15:15:00	18.19	6.49	7.60	13.57	6.95	9.21	-6.62	-4.35
15:30:00	10.12	9.68	7.79	13.05	7.79	8.37	-5.26	-4.68
15:45:00	10.76	11.57	7.53	12.75	8.64	7.97	-4.11	-4.78
16:00:00	10.71	11.69	8.72	12.33	9.52	7.75	-2.81	-4.58
16:15:00	11.30	9.00	6.34	12.22	9.69	7.60	-2.53	-4.62
16:30:00	15.43	7.60	7.41	11.66	9.91	7.56	-1.76	-4.11
16:45:00	11.44	5.38	7.25	11.93	9.05	7.45	-2.88	-4.48
17:00:00	12.90	31.83	7.36	12.36	13.10	7.42	0.74	-4.94
17:15:00	9.65	11.05	7.29	12.14	12.97	7.13	0.83	-5.01
17:30:00	8.12	17.73	8.22	11.51	14.72	7.50	3.21	-4.00
17:45:00	9.60	10.10	10.59	10.34	15.22	8.14	4.87	-2.20
18:00:00	10.14	8.55	9.29	10.08	15.85	8.55	5.77	-1.54

## Friday, March 29, 2024

Time	Turbidity (NTU)			Rolling Average Turbidity (NTU)			Difference (NTU)	
	Ambient	W TB4	N Third Street	Ambient	W TB4	N Third Street	W TB4 - Ambient	N 3SB - Ambient
7:00:00	6.63	10.79	7.63	7.98	7.94	8.54	-0.04	0.56
7:15:00	6.82	5.33	10.16	7.92	8.07	8.39	0.15	0.47
7:30:00	7.04	5.58	8.36	8.04	8.10	8.32	0.06	0.28
7:45:00	7.14	--	10.07	8.00	7.27	8.73	-0.73	0.73
8:00:00	12.56	13.59	11.43	8.04	8.82	9.53	0.79	1.49
8:15:00	9.55	9.77	23.34	8.62	8.57	12.67	-0.05	4.05
8:30:00	15.34	22.58	20.06	10.33	12.88	14.65	2.55	4.32
8:45:00	10.96	17.59	14.25	11.11	15.88	15.83	4.77	4.72
9:00:00	10.27	13.43	11.19	11.74	15.39	16.05	3.65	4.31
9:15:00	8.70	14.87	12.27	10.97	15.65	16.22	4.68	5.26
9:30:00	10.73	18.57	11.10	11.20	17.41	13.78	6.21	2.58
9:45:00	16.17	12.93	11.77	11.36	15.48	12.12	4.11	0.75
10:00:00	9.84	17.68	11.70	11.14	15.50	11.61	4.36	0.47
10:15:00	10.48	13.85	12.13	11.18	15.58	11.80	4.40	0.61
10:30:00	10.39	8.86	9.03	11.52	14.38	11.15	2.86	-0.38
10:45:00	9.99	5.95	11.54	11.37	11.86	11.23	0.48	-0.14
11:00:00	15.63	6.97	9.51	11.27	10.66	10.78	-0.61	-0.49
11:15:00	9.68	9.06	10.17	11.24	8.94	10.48	-2.30	-0.76
11:30:00	16.85	--	8.47	12.51	7.71	9.74	-4.80	-2.77
11:45:00	9.80	8.95	8.76	12.39	7.73	9.69	-4.66	-2.70
12:00:00	8.96	6.97	9.38	12.18	7.99	9.26	-4.20	-2.93
12:15:00	9.13	7.57	7.62	10.88	8.14	8.88	-2.75	-2.00
12:30:00	8.51	6.90	8.47	10.65	7.60	8.54	-3.05	-2.11
12:45:00	13.97	7.85	18.75	10.07	7.65	10.60	-2.42	0.52
13:00:00	8.46	7.81	14.77	9.80	7.42	11.80	-2.38	1.99
13:15:00	14.03	9.77	--	10.82	7.98	12.40	-2.84	1.58
13:30:00	9.77	9.53	13.46	10.95	8.37	13.86	-2.57	2.92
13:45:00	8.80	7.33	--	11.00	8.46	15.66	-2.54	4.66
14:00:00	11.86	5.91	21.19	10.58	8.07	16.47	-2.51	5.89
14:15:00	8.87	6.83	16.31	10.66	7.87	16.99	-2.79	6.32
14:30:00	14.16	8.22	31.53	10.69	7.56	20.62	-3.13	9.93
14:45:00	7.89	10.31	--	10.31	7.72	23.01	-2.59	12.70
15:00:00	9.82	7.47	19.74	10.52	7.75	22.19	-2.77	11.67
15:15:00	8.34	6.54	--	9.82	7.88	22.53	-1.94	12.71
15:30:00	8.69	8.06	--	9.78	8.12	25.63	-1.66	15.85
15:45:00	14.87	7.38	--	9.92	7.95	19.74	-1.97	9.82
16:00:00	7.19	7.31	--	9.78	7.35	19.74	-2.43	9.96
16:15:00	14.44	7.65	--	10.70	7.39	--	-3.32	--
16:30:00	7.35	9.65	--	10.51	8.01	--	-2.50	--
16:45:00	8.05	10.60	--	10.38	8.52	--	-1.86	--
17:00:00	7.45	8.93	--	8.90	8.83	--	-0.07	--
17:15:00	8.59	8.79	--	9.18	9.12	--	-0.05	--
17:30:00	13.15	8.09	--	8.92	9.21	--	0.29	--
17:45:00	7.81	9.35	--	9.01	9.15	--	0.14	--
18:00:00	8.33	8.75	--	9.07	8.78	--	-0.29	--

**APPENDIX B**  
**Dissolved Oxygen Data**



**March 24 - March 30, 2024**

Date	Time	DO (mg/L)			
		Ambient	W TB4	S 3SB	N 3SB
3/24/2024	0:00:00	8.96	9.90	8.78	--
3/24/2024	0:15:00	9.31	9.90	8.91	--
3/24/2024	0:30:00	9.33	10.00	7.09	--
3/24/2024	0:45:00	9.56	9.80	7.10	--
3/24/2024	1:00:00	8.67	9.78	5.45	--
3/24/2024	1:15:00	8.06	9.12	6.40	--
3/24/2024	1:30:00	8.56	9.23	5.99	--
3/24/2024	1:45:00	8.33	6.94	6.24	--
3/24/2024	2:00:00	8.28	6.44	5.64	--
3/24/2024	2:15:00	7.56	8.12	8.49	--
3/24/2024	2:30:00	8.61	8.45	5.16	--
3/24/2024	2:45:00	7.78	5.97	6.35	--
3/24/2024	3:00:00	5.43	5.65	6.57	--
3/24/2024	3:15:00	6.58	5.78	6.56	--
3/24/2024	3:30:00	5.46	5.77	4.42	--
3/24/2024	3:45:00	5.46	5.68	5.13	--
3/24/2024	4:00:00	5.58	5.65	4.80	--
3/24/2024	4:15:00	5.60	5.71	5.29	--
3/24/2024	4:30:00	5.69	5.93	6.06	--
3/24/2024	4:45:00	5.51	5.85	6.66	--
3/24/2024	5:00:00	5.73	5.84	7.09	--
3/24/2024	5:15:00	6.06	5.82	7.25	--
3/24/2024	5:30:00	6.20	5.83	6.04	--
3/24/2024	5:45:00	6.26	6.32	5.60	--
3/24/2024	6:00:00	6.49	6.78	5.55	--
3/24/2024	6:15:00	6.13	6.80	6.16	--
3/24/2024	6:30:00	6.11	6.64	5.69	--
3/24/2024	6:45:00	6.64	6.47	6.37	--
3/24/2024	7:00:00	6.54	5.97	6.41	--
3/24/2024	7:15:00	6.65	7.76	6.07	--
3/24/2024	7:30:00	6.96	7.58	7.59	--
3/24/2024	7:45:00	6.65	7.57	6.26	--
3/24/2024	8:00:00	6.90	6.87	7.02	--
3/24/2024	8:15:00	7.19	8.19	7.40	--
3/24/2024	8:30:00	7.64	8.96	7.13	--
3/24/2024	8:45:00	6.93	8.42	7.31	--
3/24/2024	9:00:00	6.55	6.91	6.78	--
3/24/2024	9:15:00	6.73	8.36	8.38	--
3/24/2024	9:30:00	6.93	7.81	7.83	--
3/24/2024	9:45:00	7.14	8.08	8.09	--
3/24/2024	10:00:00	7.11	7.76	7.85	--
3/24/2024	10:15:00	7.17	8.19	7.67	--
3/24/2024	10:30:00	7.16	8.18	7.83	--
3/24/2024	10:45:00	6.98	8.27	8.09	--
3/24/2024	11:00:00	6.90	8.16	7.07	--
3/24/2024	11:15:00	6.81	7.84	8.08	--
3/24/2024	11:30:00	6.82	8.07	8.33	--
3/24/2024	11:45:00	6.78	7.28	7.95	--

Note: Data has not been validated

**March 24 - March 30, 2024**

Date	Time	DO (mg/L)			
		Ambient	W TB4	S 3SB	N 3SB
3/24/2024	12:00:00	6.80	8.10	8.19	--
3/24/2024	12:15:00	6.91	7.21	7.47	--
3/24/2024	12:30:00	6.96	7.37	7.93	--
3/24/2024	12:45:00	6.81	7.58	7.69	--
3/24/2024	13:00:00	6.67	7.49	7.83	--
3/24/2024	13:15:00	6.59	7.74	7.87	--
3/24/2024	13:30:00	6.71	7.67	7.78	--
3/24/2024	13:45:00	6.61	8.34	7.35	--
3/24/2024	14:00:00	6.75	8.20	7.39	--
3/24/2024	14:15:00	7.03	8.39	7.33	--
3/24/2024	14:30:00	7.15	8.55	7.30	--
3/24/2024	14:45:00	6.98	8.40	7.25	--
3/24/2024	15:00:00	7.03	8.45	7.34	--
3/24/2024	15:15:00	7.19	8.38	7.08	--
3/24/2024	15:30:00	7.07	8.20	7.20	--
3/24/2024	15:45:00	6.78	8.66	7.02	--
3/24/2024	16:00:00	6.66	8.33	7.13	--
3/24/2024	16:15:00	6.26	8.28	7.32	--
3/24/2024	16:30:00	6.64	7.72	7.35	--
3/24/2024	16:45:00	7.26	8.04	7.56	--
3/24/2024	17:00:00	7.38	7.94	8.00	--
3/24/2024	17:15:00	7.80	8.87	7.95	--
3/24/2024	17:30:00	7.95	8.44	8.49	--
3/24/2024	17:45:00	7.81	8.61	8.29	--
3/24/2024	18:00:00	7.84	8.43	8.75	--
3/24/2024	18:15:00	7.99	8.48	8.44	--
3/24/2024	18:30:00	7.76	8.37	8.42	--
3/24/2024	18:45:00	7.87	8.38	8.01	--
3/24/2024	19:00:00	7.89	8.59	8.49	--
3/24/2024	19:15:00	7.94	9.13	8.57	--
3/24/2024	19:30:00	7.97	8.95	8.73	--
3/24/2024	19:45:00	7.70	8.94	8.68	--
3/24/2024	20:00:00	7.58	8.24	8.73	--
3/24/2024	20:15:00	7.45	8.34	8.69	--
3/24/2024	20:30:00	7.62	8.60	8.69	--
3/24/2024	20:45:00	7.57	8.33	8.60	--
3/24/2024	21:00:00	7.75	8.28	8.61	--
3/24/2024	21:15:00	8.10	9.10	8.62	--
3/24/2024	21:30:00	8.02	9.28	7.34	--
3/24/2024	21:45:00	8.15	9.18	8.79	--
3/24/2024	22:00:00	7.60	8.58	8.40	--
3/24/2024	22:15:00	7.75	8.30	7.60	--
3/24/2024	22:30:00	7.94	8.60	8.59	--
3/24/2024	22:45:00	8.06	8.26	8.73	--
3/24/2024	23:00:00	7.90	8.53	8.25	--
3/24/2024	23:15:00	7.42	8.31	8.65	--
3/24/2024	23:30:00	7.49	8.76	8.46	--
3/24/2024	23:45:00	7.64	8.96	8.62	--

Note: Data has not been validated

**March 24 - March 30, 2024**

Date	Time	DO (mg/L)			
		Ambient	W TB4	S 3SB	N 3SB
3/25/2024	0:00:00	7.34	8.62	8.47	--
3/25/2024	0:15:00	7.57	8.35	8.73	--
3/25/2024	0:30:00	7.15	8.29	8.60	--
3/25/2024	0:45:00	7.32	8.51	8.56	--
3/25/2024	1:00:00	7.45	8.60	8.55	--
3/25/2024	1:15:00	7.39	8.34	8.65	--
3/25/2024	1:30:00	7.16	8.19	8.56	--
3/25/2024	1:45:00	7.29	8.20	8.37	--
3/25/2024	2:00:00	7.29	8.18	7.81	--
3/25/2024	2:15:00	7.14	8.05	7.74	--
3/25/2024	2:30:00	7.20	8.02	7.72	--
3/25/2024	2:45:00	7.22	7.89	7.59	--
3/25/2024	3:00:00	7.19	7.80	7.43	--
3/25/2024	3:15:00	7.17	7.72	7.78	--
3/25/2024	3:30:00	7.31	7.80	7.66	--
3/25/2024	3:45:00	7.24	7.75	7.53	--
3/25/2024	4:00:00	7.02	7.85	7.46	--
3/25/2024	4:15:00	7.44	7.82	7.11	--
3/25/2024	4:30:00	7.15	8.15	6.87	--
3/25/2024	4:45:00	7.04	8.02	6.67	--
3/25/2024	5:00:00	7.05	7.98	6.91	--
3/25/2024	5:15:00	7.10	7.86	7.45	--
3/25/2024	5:30:00	7.56	8.02	7.16	--
3/25/2024	5:45:00	7.84	8.17	7.68	--
3/25/2024	6:00:00	7.77	8.10	7.70	--
3/25/2024	6:15:00	7.65	8.40	7.39	--
3/25/2024	6:30:00	7.76	7.99	7.62	--
3/25/2024	6:45:00	7.61	8.31	7.88	--
3/25/2024	7:00:00	7.76	8.28	7.50	--
3/25/2024	7:15:00	7.66	8.57	8.02	--
3/25/2024	7:30:00	7.82	8.46	7.88	--
3/25/2024	7:45:00	7.76	8.54	8.19	--
3/25/2024	8:00:00	7.87	8.44	7.95	--
3/25/2024	8:15:00	7.40	8.53	7.58	--
3/25/2024	8:30:00	7.59	8.41	7.23	--
3/25/2024	8:45:00	7.50	8.55	7.10	--
3/25/2024	9:00:00	7.86	8.52	7.28	--
3/25/2024	9:15:00	8.04	8.48	7.26	--
3/25/2024	9:30:00	7.89	8.48	7.15	--
3/25/2024	9:45:00	7.99	8.54	7.27	--
3/25/2024	10:00:00	7.74	8.56	7.02	--
3/25/2024	10:15:00	7.72	8.51	7.15	--
3/25/2024	10:30:00	7.69	8.34	6.93	--
3/25/2024	10:45:00	7.80	8.40	6.92	--
3/25/2024	11:00:00	7.69	8.49	6.89	--
3/25/2024	11:15:00	7.67	8.55	6.61	--
3/25/2024	11:30:00	7.69	8.33	6.72	--
3/25/2024	11:45:00	7.79	8.47	6.66	--

Note: Data has not been validated

**March 24 - March 30, 2024**

Date	Time	DO (mg/L)			
		Ambient	W TB4	S 3SB	N 3SB
3/25/2024	12:00:00	7.69	8.53	6.86	--
3/25/2024	12:15:00	7.64	8.60	6.83	--
3/25/2024	12:30:00	7.66	8.48	6.61	--
3/25/2024	12:45:00	7.79	8.51	6.60	--
3/25/2024	13:00:00	7.76	8.66	6.85	--
3/25/2024	13:15:00	7.68	8.49	6.43	--
3/25/2024	13:30:00	7.64	8.29	6.60	--
3/25/2024	13:45:00	7.69	7.36	6.17	--
3/25/2024	14:00:00	7.72	6.84	5.87	--
3/25/2024	14:15:00	7.76	6.86	5.61	--
3/25/2024	14:30:00	7.77	6.76	5.79	--
3/25/2024	14:45:00	7.70	6.86	5.74	--
3/25/2024	15:00:00	7.63	7.07	6.12	--
3/25/2024	15:15:00	7.70	6.98	6.03	--
3/25/2024	15:30:00	7.75	6.79	6.05	--
3/25/2024	15:45:00	7.73	6.81	5.99	--
3/25/2024	16:00:00	7.36	6.52	5.90	--
3/25/2024	16:15:00	7.48	6.51	5.81	--
3/25/2024	16:30:00	7.58	6.48	5.75	--
3/25/2024	16:45:00	6.31	6.42	5.82	--
3/25/2024	17:00:00	6.23	6.43	5.56	--
3/25/2024	17:15:00	6.14	6.56	5.74	--
3/25/2024	17:30:00	5.99	6.99	6.66	--
3/25/2024	17:45:00	5.96	7.34	6.31	--
3/25/2024	18:00:00	5.92	7.17	6.98	--
3/25/2024	18:15:00	5.87	7.11	6.56	--
3/25/2024	18:30:00	5.89	6.96	6.58	--
3/25/2024	18:45:00	5.91	6.79	6.72	--
3/25/2024	19:00:00	6.08	6.97	6.89	--
3/25/2024	19:15:00	6.73	6.91	6.33	--
3/25/2024	19:30:00	6.45	6.86	6.63	--
3/25/2024	19:45:00	6.29	6.60	6.65	--
3/25/2024	20:00:00	6.12	6.70	6.76	--
3/25/2024	20:15:00	6.39	6.90	6.69	--
3/25/2024	20:30:00	6.02	6.99	6.83	--
3/25/2024	20:45:00	6.19	6.67	6.56	--
3/25/2024	21:00:00	6.46	6.76	6.78	--
3/25/2024	21:15:00	6.62	7.06	6.36	--
3/25/2024	21:30:00	6.59	7.02	6.82	--
3/25/2024	21:45:00	6.46	7.09	6.69	--
3/25/2024	22:00:00	6.45	7.06	6.16	--
3/25/2024	22:15:00	6.56	6.83	6.27	--
3/25/2024	22:30:00	6.57	6.98	5.74	--
3/25/2024	22:45:00	6.66	7.00	6.24	--
3/25/2024	23:00:00	6.57	7.04	6.08	--
3/25/2024	23:15:00	6.21	7.07	6.11	--
3/25/2024	23:30:00	6.19	7.01	6.29	--
3/25/2024	23:45:00	6.00	7.00	6.31	--

Note: Data has not been validated

**March 24 - March 30, 2024**

Date	Time	DO (mg/L)			
		Ambient	W TB4	S 3SB	N 3SB
3/26/2024	0:00:00	6.14	7.00	6.57	--
3/26/2024	0:15:00	6.26	6.93	6.40	--
3/26/2024	0:30:00	6.57	6.97	6.29	--
3/26/2024	0:45:00	6.73	7.00	5.18	--
3/26/2024	1:00:00	6.66	6.82	5.98	--
3/26/2024	1:15:00	6.79	6.73	6.21	--
3/26/2024	1:30:00	7.05	6.55	6.32	--
3/26/2024	1:45:00	7.08	6.72	6.00	--
3/26/2024	2:00:00	7.03	6.84	6.05	--
3/26/2024	2:15:00	6.99	6.72	6.70	--
3/26/2024	2:30:00	6.77	6.76	6.03	--
3/26/2024	2:45:00	6.63	6.89	6.31	--
3/26/2024	3:00:00	6.59	6.83	5.97	--
3/26/2024	3:15:00	6.87	6.81	6.03	--
3/26/2024	3:30:00	6.64	6.84	6.16	--
3/26/2024	3:45:00	6.69	6.74	5.85	--
3/26/2024	4:00:00	6.64	6.83	5.54	--
3/26/2024	4:15:00	6.53	6.88	6.22	--
3/26/2024	4:30:00	6.73	6.87	5.66	--
3/26/2024	4:45:00	6.68	7.02	5.29	--
3/26/2024	5:00:00	6.79	6.92	6.22	--
3/26/2024	5:15:00	6.84	6.96	6.23	--
3/26/2024	5:30:00	6.89	6.97	6.22	--
3/26/2024	5:45:00	7.13	7.24	6.49	--
3/26/2024	6:00:00	7.29	7.06	6.61	--
3/26/2024	6:15:00	7.20	7.04	6.49	--
3/26/2024	6:30:00	7.21	7.13	6.51	--
3/26/2024	6:45:00	7.18	7.16	6.33	--
3/26/2024	7:00:00	7.10	7.24	6.32	--
3/26/2024	7:15:00	7.10	7.16	6.28	--
3/26/2024	7:30:00	7.07	7.17	6.55	--
3/26/2024	7:45:00	7.15	7.19	6.49	--
3/26/2024	8:00:00	7.07	6.97	6.34	--
3/26/2024	8:15:00	6.79	7.05	6.29	--
3/26/2024	8:30:00	7.13	7.09	6.25	--
3/26/2024	8:45:00	7.03	7.13	6.38	--
3/26/2024	9:00:00	6.91	7.19	6.54	--
3/26/2024	9:15:00	7.02	7.29	6.79	--
3/26/2024	9:30:00	7.10	7.35	6.70	--
3/26/2024	9:45:00	7.04	7.69	6.81	--
3/26/2024	10:00:00	6.98	7.45	6.82	--
3/26/2024	10:15:00	7.52	7.40	6.83	--
3/26/2024	10:30:00	7.63	7.29	7.45	--
3/26/2024	10:45:00	7.12	7.76	6.95	--
3/26/2024	11:00:00	7.15	7.53	7.26	--
3/26/2024	11:15:00	7.14	7.45	7.02	--
3/26/2024	11:30:00	7.14	7.49	7.19	--
3/26/2024	11:45:00	6.92	7.69	7.88	--

Note: Data has not been validated

**March 24 - March 30, 2024**

Date	Time	DO (mg/L)			
		Ambient	W TB4	S 3SB	N 3SB
3/26/2024	12:00:00	7.18	7.76	7.41	--
3/26/2024	12:15:00	7.13	7.75	6.99	--
3/26/2024	12:30:00	7.43	7.76	6.99	--
3/26/2024	12:45:00	7.39	7.79	7.10	--
3/26/2024	13:00:00	7.30	7.90	7.11	--
3/26/2024	13:15:00	7.37	7.93	7.23	--
3/26/2024	13:30:00	7.44	7.72	7.04	--
3/26/2024	13:45:00	7.53	7.71	6.99	--
3/26/2024	14:00:00	7.45	7.67	6.81	--
3/26/2024	14:15:00	7.36	7.66	6.76	--
3/26/2024	14:30:00	6.84	7.69	6.53	--
3/26/2024	14:45:00	7.38	7.60	6.63	--
3/26/2024	15:00:00	7.31	7.73	6.58	--
3/26/2024	15:15:00	7.36	7.69	6.44	--
3/26/2024	15:30:00	7.32	7.72	6.42	--
3/26/2024	15:45:00	7.35	7.79	7.03	--
3/26/2024	16:00:00	7.22	7.20	6.72	--
3/26/2024	16:15:00	7.20	7.07	6.57	--
3/26/2024	16:30:00	7.28	7.12	6.21	--
3/26/2024	16:45:00	7.25	7.00	6.36	--
3/26/2024	17:00:00	7.34	6.78	5.99	--
3/26/2024	17:15:00	7.33	6.74	5.85	--
3/26/2024	17:30:00	6.75	6.85	5.93	--
3/26/2024	17:45:00	6.61	7.20	6.22	--
3/26/2024	18:00:00	6.45	7.33	6.29	--
3/26/2024	18:15:00	6.16	7.17	6.44	--
3/26/2024	18:30:00	6.29	7.25	6.50	--
3/26/2024	18:45:00	6.45	7.46	6.22	--
3/26/2024	19:00:00	6.42	7.27	6.62	--
3/26/2024	19:15:00	6.49	7.09	6.38	--
3/26/2024	19:30:00	6.89	7.02	6.12	--
3/26/2024	19:45:00	7.11	7.01	6.15	--
3/26/2024	20:00:00	6.87	7.06	6.15	--
3/26/2024	20:15:00	6.66	7.13	5.74	--
3/26/2024	20:30:00	6.70	7.18	6.37	--
3/26/2024	20:45:00	6.75	7.14	6.68	--
3/26/2024	21:00:00	6.61	7.09	6.14	--
3/26/2024	21:15:00	6.39	7.20	6.38	--
3/26/2024	21:30:00	6.56	7.16	6.47	--
3/26/2024	21:45:00	6.83	7.09	5.71	--
3/26/2024	22:00:00	6.67	7.04	6.31	--
3/26/2024	22:15:00	6.73	7.01	6.28	--
3/26/2024	22:30:00	6.54	7.12	6.00	--
3/26/2024	22:45:00	6.51	7.04	6.28	--
3/26/2024	23:00:00	6.58	7.15	5.96	--
3/26/2024	23:15:00	6.20	7.09	5.85	--
3/26/2024	23:30:00	6.36	7.19	6.23	--
3/26/2024	23:45:00	6.42	7.20	5.55	--

Note: Data has not been validated

**March 24 - March 30, 2024**

Date	Time	DO (mg/L)			
		Ambient	W TB4	S 3SB	N 3SB
3/27/2024	0:00:00	6.52	7.11	5.36	--
3/27/2024	0:15:00	6.40	7.16	5.45	--
3/27/2024	0:30:00	6.59	7.18	5.34	--
3/27/2024	0:45:00	6.52	7.14	5.71	--
3/27/2024	1:00:00	6.49	7.10	5.88	--
3/27/2024	1:15:00	6.43	7.09	5.40	--
3/27/2024	1:30:00	6.54	7.20	5.68	--
3/27/2024	1:45:00	6.44	7.01	6.04	--
3/27/2024	2:00:00	6.54	6.88	5.27	--
3/27/2024	2:15:00	6.41	6.71	5.28	--
3/27/2024	2:30:00	6.36	7.01	6.28	--
3/27/2024	2:45:00	6.46	7.11	3.73	--
3/27/2024	3:00:00	6.45	7.06	5.66	--
3/27/2024	3:15:00	6.51	7.02	6.28	--
3/27/2024	3:30:00	6.44	7.01	5.14	--
3/27/2024	3:45:00	6.10	7.09	5.75	--
3/27/2024	4:00:00	6.18	6.65	5.75	--
3/27/2024	4:15:00	6.11	6.70	5.79	--
3/27/2024	4:30:00	6.38	7.10	5.98	--
3/27/2024	4:45:00	6.22	7.04	5.53	--
3/27/2024	5:00:00	6.28	6.69	5.68	--
3/27/2024	5:15:00	6.43	6.86	5.54	--
3/27/2024	5:30:00	6.39	6.95	5.78	--
3/27/2024	5:45:00	6.21	6.11	5.71	--
3/27/2024	6:00:00	6.15	6.25	5.70	--
3/27/2024	6:15:00	6.09	5.95	5.49	--
3/27/2024	6:30:00	6.03	5.81	5.67	--
3/27/2024	6:45:00	6.08	6.10	5.84	--
3/27/2024	7:00:00	5.90	5.71	5.75	--
3/27/2024	7:15:00	5.63	5.99	5.78	--
3/27/2024	7:30:00	6.13	6.33	5.76	--
3/27/2024	7:45:00	6.36	6.17	6.28	--
3/27/2024	8:00:00	6.23	6.32	6.03	--
3/27/2024	8:15:00	6.12	6.06	5.66	--
3/27/2024	8:30:00	6.09	6.22	5.66	--
3/27/2024	8:45:00	6.10	6.29	5.49	--
3/27/2024	9:00:00	5.76	6.46	5.47	--
3/27/2024	9:15:00	6.08	6.45	5.56	--
3/27/2024	9:30:00	5.49	6.36	5.65	--
3/27/2024	9:45:00	5.70	6.17	5.56	--
3/27/2024	10:00:00	5.77	6.32	5.86	--
3/27/2024	10:15:00	5.72	5.94	5.82	--
3/27/2024	10:30:00	5.07	6.34	5.48	--
3/27/2024	10:45:00	4.97	6.35	5.86	--
3/27/2024	11:00:00	5.79	6.38	5.78	--
3/27/2024	11:15:00	5.76	6.45	6.04	--
3/27/2024	11:30:00	6.08	6.44	5.89	--
3/27/2024	11:45:00	5.94	6.50	5.74	--

Note: Data has not been validated

**March 24 - March 30, 2024**

Date	Time	DO (mg/L)			
		Ambient	W TB4	S 3SB	N 3SB
3/27/2024	12:00:00	6.04	6.42	5.83	--
3/27/2024	12:15:00	5.88	6.48	5.64	--
3/27/2024	12:30:00	6.06	6.68	5.87	--
3/27/2024	12:45:00	6.16	6.63	6.30	--
3/27/2024	13:00:00	6.22	6.52	5.80	--
3/27/2024	13:15:00	6.13	7.21	5.58	--
3/27/2024	13:30:00	6.15	6.55	--	--
3/27/2024	13:45:00	6.10	6.54	--	--
3/27/2024	14:00:00	6.16	6.48	--	--
3/27/2024	14:15:00	6.11	6.50	--	--
3/27/2024	14:30:00	6.09	6.24	--	--
3/27/2024	14:45:00	6.07	6.14	--	--
3/27/2024	15:00:00	6.08	6.09	--	5.40
3/27/2024	15:15:00	6.09	6.07	--	5.30
3/27/2024	15:30:00	6.11	6.06	--	5.40
3/27/2024	15:45:00	6.10	--	--	5.24
3/27/2024	16:00:00	6.10	5.72	--	5.37
3/27/2024	16:15:00	6.08	5.54	--	5.24
3/27/2024	16:30:00	5.95	5.53	--	5.26
3/27/2024	16:45:00	6.04	5.51	--	5.19
3/27/2024	17:00:00	6.01	5.48	--	5.14
3/27/2024	17:15:00	5.96	5.43	--	4.97
3/27/2024	17:30:00	5.99	5.36	--	5.11
3/27/2024	17:45:00	5.92	5.25	--	5.07
3/27/2024	18:00:00	5.24	5.19	--	5.04
3/27/2024	18:15:00	5.03	5.21	--	4.71
3/27/2024	18:30:00	5.02	5.76	--	4.91
3/27/2024	18:45:00	5.00	5.79	--	4.97
3/27/2024	19:00:00	4.89	5.57	--	5.08
3/27/2024	19:15:00	4.80	6.20	--	5.04
3/27/2024	19:30:00	4.75	8.21	--	5.19
3/27/2024	19:45:00	4.69	8.37	--	5.07
3/27/2024	20:00:00	4.62	8.92	--	5.99
3/27/2024	20:15:00	4.81	9.13	--	6.98
3/27/2024	20:30:00	5.63	9.21	--	7.12
3/27/2024	20:45:00	6.79	8.82	--	6.18
3/27/2024	21:00:00	7.20	9.12	--	6.66
3/27/2024	21:15:00	7.66	9.23	--	6.78
3/27/2024	21:30:00	7.56	9.19	--	6.76
3/27/2024	21:45:00	7.60	8.84	--	6.52
3/27/2024	22:00:00	7.68	8.93	--	6.85
3/27/2024	22:15:00	7.83	9.29	--	6.96
3/27/2024	22:30:00	7.76	8.95	--	6.40
3/27/2024	22:45:00	7.68	9.22	--	6.68
3/27/2024	23:00:00	7.74	8.37	--	6.49
3/27/2024	23:15:00	7.68	8.59	--	6.77
3/27/2024	23:30:00	7.54	8.27	--	6.78
3/27/2024	23:45:00	7.66	8.52	--	7.15

Note: Data has not been validated



**March 24 - March 30, 2024**

Date	Time	DO (mg/L)			
		Ambient	W TB4	S 3SB	N 3SB
3/28/2024	0:00:00	7.49	8.34	--	6.54
3/28/2024	0:15:00	7.35	7.94	--	6.75
3/28/2024	0:30:00	7.33	8.05	--	6.85
3/28/2024	0:45:00	7.13	7.59	--	6.61
3/28/2024	1:00:00	7.08	7.76	--	6.36
3/28/2024	1:15:00	6.61	7.51	--	6.93
3/28/2024	1:30:00	6.18	7.60	--	6.26
3/28/2024	1:45:00	6.60	7.66	--	6.92
3/28/2024	2:00:00	6.73	7.38	--	6.32
3/28/2024	2:15:00	7.51	7.39	--	5.79
3/28/2024	2:30:00	7.08	7.88	--	5.54
3/28/2024	2:45:00	6.54	7.17	--	5.81
3/28/2024	3:00:00	7.56	7.15	--	4.50
3/28/2024	3:15:00	6.76	6.83	--	5.87
3/28/2024	3:30:00	6.87	7.14	--	5.09
3/28/2024	3:45:00	7.13	6.03	--	4.89
3/28/2024	4:00:00	6.46	7.05	--	4.22
3/28/2024	4:15:00	6.19	6.92	--	4.60
3/28/2024	4:30:00	6.53	6.74	--	4.07
3/28/2024	4:45:00	5.83	6.47	--	4.08
3/28/2024	5:00:00	5.92	7.16	--	3.24
3/28/2024	5:15:00	6.04	6.80	--	3.42
3/28/2024	5:30:00	6.31	6.61	--	4.01
3/28/2024	5:45:00	6.06	6.69	--	3.24
3/28/2024	6:00:00	5.98	6.60	--	3.07
3/28/2024	6:15:00	6.00	5.79	--	3.65
3/28/2024	6:30:00	5.92	5.75	--	3.98
3/28/2024	6:45:00	6.04	8.50	--	5.04
3/28/2024	7:00:00	6.22	9.23	--	6.02
3/28/2024	7:15:00	7.13	9.57	--	6.64
3/28/2024	7:30:00	7.56	9.10	--	7.66
3/28/2024	7:45:00	7.18	8.91	--	6.58
3/28/2024	8:00:00	7.13	8.67	--	6.77
3/28/2024	8:15:00	7.26	8.49	--	6.88
3/28/2024	8:30:00	6.35	9.03	--	7.57
3/28/2024	8:45:00	7.13	8.54	--	6.93
3/28/2024	9:00:00	7.42	8.67	--	7.36
3/28/2024	9:15:00	7.33	8.01	--	7.25
3/28/2024	9:30:00	7.06	7.92	--	7.15
3/28/2024	9:45:00	6.85	7.81	--	7.66
3/28/2024	10:00:00	7.07	8.30	--	7.83
3/28/2024	10:15:00	7.09	7.42	--	6.99
3/28/2024	10:30:00	6.85	7.96	--	7.71
3/28/2024	10:45:00	7.00	7.69	--	7.36
3/28/2024	11:00:00	6.93	7.52	--	7.49
3/28/2024	11:15:00	6.39	7.65	--	7.42
3/28/2024	11:30:00	6.51	7.51	--	7.22
3/28/2024	11:45:00	6.62	7.72	--	7.13

Note: Data has not been validated

**March 24 - March 30, 2024**

Date	Time	DO (mg/L)			
		Ambient	W TB4	S 3SB	N 3SB
3/28/2024	12:00:00	6.88	7.70	--	7.23
3/28/2024	12:15:00	6.36	7.87	--	7.21
3/28/2024	12:30:00	6.32	7.72	--	7.04
3/28/2024	12:45:00	6.32	7.58	--	6.69
3/28/2024	13:00:00	6.67	7.43	--	6.80
3/28/2024	13:15:00	6.54	6.88	--	6.82
3/28/2024	13:30:00	6.04	7.05	--	7.03
3/28/2024	13:45:00	5.94	6.47	--	6.19
3/28/2024	14:00:00	5.95	6.51	--	6.61
3/28/2024	14:15:00	5.32	6.06	--	6.66
3/28/2024	14:30:00	5.18	7.14	--	6.64
3/28/2024	14:45:00	5.24	6.68	--	6.70
3/28/2024	15:00:00	5.15	6.60	--	6.82
3/28/2024	15:15:00	5.33	7.45	--	6.39
3/28/2024	15:30:00	6.01	6.60	--	6.83
3/28/2024	15:45:00	5.49	5.73	--	6.70
3/28/2024	16:00:00	5.31	5.57	--	6.90
3/28/2024	16:15:00	5.54	6.82	--	6.67
3/28/2024	16:30:00	5.41	6.70	--	6.65
3/28/2024	16:45:00	5.02	7.48	--	6.18
3/28/2024	17:00:00	5.32	6.94	--	6.49
3/28/2024	17:15:00	5.29	6.67	--	6.37
3/28/2024	17:30:00	5.50	5.70	--	6.15
3/28/2024	17:45:00	5.28	6.02	--	5.86
3/28/2024	18:00:00	5.26	6.58	--	5.58
3/28/2024	18:15:00	4.78	6.90	--	5.57
3/28/2024	18:30:00	5.32	7.24	--	5.35
3/28/2024	18:45:00	5.20	7.07	--	5.50
3/28/2024	19:00:00	5.93	6.60	--	6.02
3/28/2024	19:15:00	6.01	6.44	--	5.72
3/28/2024	19:30:00	5.54	6.20	--	5.65
3/28/2024	19:45:00	6.18	6.11	--	5.67
3/28/2024	20:00:00	5.94	6.29	--	5.51
3/28/2024	20:15:00	5.94	6.26	--	5.35
3/28/2024	20:30:00	6.01	6.39	--	5.45
3/28/2024	20:45:00	5.90	6.28	--	5.58
3/28/2024	21:00:00	5.87	6.34	--	5.82
3/28/2024	21:15:00	5.87	6.32	--	5.81
3/28/2024	21:30:00	6.03	6.34	--	5.62
3/28/2024	21:45:00	5.92	6.36	--	5.80
3/28/2024	22:00:00	5.98	6.18	--	5.56
3/28/2024	22:15:00	5.90	6.34	--	5.78
3/28/2024	22:30:00	5.79	6.23	--	5.80
3/28/2024	22:45:00	5.84	6.32	--	5.84
3/28/2024	23:00:00	5.83	6.30	--	5.70
3/28/2024	23:15:00	5.87	6.23	--	5.69
3/28/2024	23:30:00	5.84	6.19	--	5.77
3/28/2024	23:45:00	5.80	6.29	--	5.49

Note: Data has not been validated

**March 24 - March 30, 2024**

Date	Time	DO (mg/L)			
		Ambient	W TB4	S 3SB	N 3SB
3/29/2024	0:00:00	5.80	6.21	--	5.58
3/29/2024	0:15:00	5.56	5.88	--	5.58
3/29/2024	0:30:00	5.45	6.13	--	5.73
3/29/2024	0:45:00	5.60	6.13	--	5.57
3/29/2024	1:00:00	5.61	5.91	--	5.64
3/29/2024	1:15:00	5.55	6.18	--	5.64
3/29/2024	1:30:00	5.52	6.07	--	5.61
3/29/2024	1:45:00	5.42	5.92	--	5.65
3/29/2024	2:00:00	5.41	5.92	--	5.73
3/29/2024	2:15:00	5.45	5.78	--	5.60
3/29/2024	2:30:00	5.34	5.83	--	5.62
3/29/2024	2:45:00	5.47	5.86	--	5.51
3/29/2024	3:00:00	5.59	6.00	--	5.60
3/29/2024	3:15:00	5.30	6.01	--	5.46
3/29/2024	3:30:00	5.36	5.75	--	5.29
3/29/2024	3:45:00	5.00	5.78	--	5.10
3/29/2024	4:00:00	5.22	5.62	--	5.26
3/29/2024	4:15:00	5.31	6.04	--	5.10
3/29/2024	4:30:00	5.45	5.47	--	4.52
3/29/2024	4:45:00	5.40	5.45	--	4.94
3/29/2024	5:00:00	5.34	5.58	--	4.74
3/29/2024	5:15:00	5.32	5.51	--	4.31
3/29/2024	5:30:00	5.35	4.94	--	4.25
3/29/2024	5:45:00	5.39	5.37	--	3.35
3/29/2024	6:00:00	5.46	5.21	--	3.87
3/29/2024	6:15:00	5.36	5.00	--	4.11
3/29/2024	6:30:00	5.20	4.99	--	4.03
3/29/2024	6:45:00	5.25	4.84	--	3.60
3/29/2024	7:00:00	5.38	4.90	--	3.56
3/29/2024	7:15:00	5.34	5.12	--	3.59
3/29/2024	7:30:00	4.91	5.31	--	3.95
3/29/2024	7:45:00	4.91	4.39	--	3.79
3/29/2024	8:00:00	4.76	4.13	--	2.72
3/29/2024	8:15:00	4.55	4.49	--	3.31
3/29/2024	8:30:00	3.67	4.05	--	3.14
3/29/2024	8:45:00	3.85	3.99	--	3.29
3/29/2024	9:00:00	3.94	3.96	--	3.38
3/29/2024	9:15:00	3.97	4.13	--	3.21
3/29/2024	9:30:00	3.86	4.04	--	3.25
3/29/2024	9:45:00	3.76	4.07	--	3.19
3/29/2024	10:00:00	3.76	4.20	--	3.28
3/29/2024	10:15:00	3.74	4.05	--	3.30
3/29/2024	10:30:00	3.77	4.42	--	3.50
3/29/2024	10:45:00	3.79	6.98	--	3.37
3/29/2024	11:00:00	3.97	7.20	--	3.43
3/29/2024	11:15:00	4.17	5.38	--	3.89
3/29/2024	11:30:00	4.41	5.53	--	4.26
3/29/2024	11:45:00	4.22	5.39	--	3.91

Note: Data has not been validated

**March 24 - March 30, 2024**

Date	Time	DO (mg/L)			
		Ambient	W TB4	S 3SB	N 3SB
3/29/2024	12:00:00	3.86	5.78	--	3.74
3/29/2024	12:15:00	3.81	5.50	--	4.51
3/29/2024	12:30:00	3.87	5.82	--	4.55
3/29/2024	12:45:00	3.87	5.84	--	3.92
3/29/2024	13:00:00	3.94	5.14	--	3.53
3/29/2024	13:15:00	3.88	5.36	--	3.57
3/29/2024	13:30:00	3.81	5.98	--	3.45
3/29/2024	13:45:00	3.78	5.74	--	3.44
3/29/2024	14:00:00	4.03	5.56	--	3.39
3/29/2024	14:15:00	3.84	5.35	--	3.57
3/29/2024	14:30:00	4.29	4.63	--	3.53
3/29/2024	14:45:00	4.38	4.96	--	3.45
3/29/2024	15:00:00	4.05	4.70	--	3.40
3/29/2024	15:15:00	4.41	4.52	--	3.24
3/29/2024	15:30:00	3.96	4.50	--	3.50
3/29/2024	15:45:00	4.11	4.52	--	2.99
3/29/2024	16:00:00	4.01	4.09	--	3.10
3/29/2024	16:15:00	4.30	4.14	--	3.14
3/29/2024	16:30:00	4.44	3.99	--	3.35
3/29/2024	16:45:00	3.94	4.08	--	2.88
3/29/2024	17:00:00	4.01	3.86	--	3.25
3/29/2024	17:15:00	4.29	4.17	--	3.25
3/29/2024	17:30:00	4.24	3.71	--	2.64
3/29/2024	17:45:00	3.92	3.40	--	3.07
3/29/2024	18:00:00	4.12	3.35	--	2.68
3/29/2024	18:15:00	4.29	3.41	--	3.26
3/29/2024	18:30:00	4.27	3.84	--	2.98
3/29/2024	18:45:00	3.88	3.77	--	3.15
3/29/2024	19:00:00	3.92	3.61	--	3.12
3/29/2024	19:15:00	3.80	3.60	--	2.98
3/29/2024	19:30:00	3.15	3.70	--	3.05
3/29/2024	19:45:00	3.27	3.68	--	3.21
3/29/2024	20:00:00	3.28	3.85	--	3.10
3/29/2024	20:15:00	3.17	4.27	--	3.23
3/29/2024	20:30:00	3.24	3.98	--	3.64
3/29/2024	20:45:00	3.48	4.77	--	3.39
3/29/2024	21:00:00	3.47	6.30	--	3.24
3/29/2024	21:15:00	3.55	6.99	--	3.33
3/29/2024	21:30:00	3.68	7.17	--	3.23
3/29/2024	21:45:00	3.76	6.31	--	3.61
3/29/2024	22:00:00	3.72	5.32	--	3.63
3/29/2024	22:15:00	3.74	7.64	--	3.44
3/29/2024	22:30:00	3.56	5.79	--	3.24
3/29/2024	22:45:00	3.53	7.06	--	3.40
3/29/2024	23:00:00	3.60	5.21	--	3.53
3/29/2024	23:15:00	3.73	5.89	--	3.70
3/29/2024	23:30:00	5.19	7.97	--	3.82
3/29/2024	23:45:00	4.85	7.73	--	3.44

Note: Data has not been validated

**March 24 - March 30, 2024**

Date	Time	DO (mg/L)			
		Ambient	W TB4	S 3SB	N 3SB
3/30/2024	0:00:00	5.07	8.50	--	3.74
3/30/2024	0:15:00	5.14	8.72	--	3.93
3/30/2024	0:30:00	5.13	8.90	--	3.43
3/30/2024	0:45:00	5.47	8.84	--	4.05
3/30/2024	1:00:00	5.85	8.28	--	3.75
3/30/2024	1:15:00	6.23	8.53	--	4.02
3/30/2024	1:30:00	6.18	7.51	--	4.09
3/30/2024	1:45:00	6.55	7.01	--	4.38
3/30/2024	2:00:00	6.51	6.51	--	4.31
3/30/2024	2:15:00	6.13	6.62	--	4.33
3/30/2024	2:30:00	6.30	8.27	--	4.71
3/30/2024	2:45:00	6.60	6.98	--	4.18
3/30/2024	3:00:00	6.61	6.93	--	4.05
3/30/2024	3:15:00	6.55	5.88	--	4.33
3/30/2024	3:30:00	6.14	6.30	--	4.37
3/30/2024	3:45:00	6.33	7.66	--	3.98
3/30/2024	4:00:00	5.69	5.62	--	3.81
3/30/2024	4:15:00	5.96	6.38	--	4.00
3/30/2024	4:30:00	5.85	6.41	--	3.93
3/30/2024	4:45:00	6.23	6.88	--	3.73
3/30/2024	5:00:00	6.19	6.77	--	3.49
3/30/2024	5:15:00	6.61	5.74	--	3.46
3/30/2024	5:30:00	6.67	6.11	--	3.12
3/30/2024	5:45:00	6.67	5.53	--	3.20
3/30/2024	6:00:00	6.59	5.53	--	2.67
3/30/2024	6:15:00	6.68	5.64	--	3.00
3/30/2024	6:30:00	6.67	5.32	--	2.79
3/30/2024	6:45:00	6.75	5.00	--	2.68
3/30/2024	7:00:00	6.85	5.53	--	2.76
3/30/2024	7:15:00	6.37	5.33	--	3.14
3/30/2024	7:30:00	6.20	5.34	--	3.22
3/30/2024	7:45:00	6.04	5.32	--	3.87
3/30/2024	8:00:00	5.16	5.10	--	3.63
3/30/2024	8:15:00	4.64	6.68	--	3.54
3/30/2024	8:30:00	5.12	8.35	--	3.66
3/30/2024	8:45:00	4.71	8.51	--	4.43
3/30/2024	9:00:00	4.78	8.85	--	5.29
3/30/2024	9:15:00	4.84	8.83	--	6.76
3/30/2024	9:30:00	6.47	9.20	--	6.48
3/30/2024	9:45:00	7.42	9.49	--	6.94
3/30/2024	10:00:00	7.45	9.53	--	6.59
3/30/2024	10:15:00	7.48	9.65	--	7.69
3/30/2024	10:30:00	8.16	9.74	--	7.18
3/30/2024	10:45:00	8.28	9.69	--	8.07
3/30/2024	11:00:00	8.07	9.86	--	7.05
3/30/2024	11:15:00	8.06	9.80	--	8.25
3/30/2024	11:30:00	7.90	9.73	--	7.34
3/30/2024	11:45:00	8.23	9.63	--	8.09

Note: Data has not been validated

**March 24 - March 30, 2024**

Date	Time	DO (mg/L)			
		Ambient	W TB4	S 3SB	N 3SB
3/30/2024	12:00:00	8.41	9.50	--	8.48
3/30/2024	12:15:00	8.47	9.50	--	7.53
3/30/2024	12:30:00	8.55	9.46	--	7.75
3/30/2024	12:45:00	8.50	9.45	--	7.86
3/30/2024	13:00:00	8.51	9.42	--	7.92
3/30/2024	13:15:00	8.52	9.31	--	8.03
3/30/2024	13:30:00	8.42	9.40	--	8.30
3/30/2024	13:45:00	8.44	9.20	--	7.89
3/30/2024	14:00:00	8.39	9.40	--	8.42
3/30/2024	14:15:00	8.34	9.27	--	8.04
3/30/2024	14:30:00	8.42	9.30	--	7.18
3/30/2024	14:45:00	8.41	9.31	--	7.73
3/30/2024	15:00:00	8.34	9.17	--	7.80
3/30/2024	15:15:00	8.37	9.10	--	7.74
3/30/2024	15:30:00	8.38	9.28	--	7.01
3/30/2024	15:45:00	8.36	8.89	--	8.07
3/30/2024	16:00:00	8.33	9.06	--	6.74
3/30/2024	16:15:00	8.21	8.71	--	6.60
3/30/2024	16:30:00	8.24	8.84	--	5.40
3/30/2024	16:45:00	8.16	7.48	--	6.88
3/30/2024	17:00:00	7.99	8.83	--	6.29
3/30/2024	17:15:00	7.96	8.78	--	7.47
3/30/2024	17:30:00	7.71	8.62	--	6.04
3/30/2024	17:45:00	7.71	8.52	--	6.61
3/30/2024	18:00:00	7.99	8.64	--	6.45
3/30/2024	18:15:00	7.99	8.11	--	6.80
3/30/2024	18:30:00	7.85	8.14	--	6.89
3/30/2024	18:45:00	7.39	8.28	--	6.13
3/30/2024	19:00:00	8.08	8.26	--	5.69
3/30/2024	19:15:00	8.00	8.19	--	5.03
3/30/2024	19:30:00	8.04	8.26	--	5.58
3/30/2024	19:45:00	8.04	8.43	--	6.19
3/30/2024	20:00:00	8.03	8.88	--	6.53
3/30/2024	20:15:00	7.86	8.99	--	6.91
3/30/2024	20:30:00	7.88	8.93	--	6.98
3/30/2024	20:45:00	7.93	9.02	--	7.14
3/30/2024	21:00:00	7.89	9.18	--	7.18
3/30/2024	21:15:00	7.90	9.26	--	7.06
3/30/2024	21:30:00	7.85	9.66	--	7.43
3/30/2024	21:45:00	7.90	9.83	--	6.84
3/30/2024	22:00:00	8.00	10.02	--	7.60
3/30/2024	22:15:00	8.03	10.07	--	8.39
3/30/2024	22:30:00	8.09	10.23	--	8.18
3/30/2024	22:45:00	8.62	10.32	--	7.87
3/30/2024	23:00:00	8.78	10.44	--	7.02
3/30/2024	23:15:00	8.93	10.48	--	8.56
3/30/2024	23:30:00	9.01	10.52	--	8.72
3/30/2024	23:45:00	9.10	10.60	--	8.77

Note: Data has not been validated