

Gowanus Canal Superfund Site Community Air Monitoring Plan for Remedial Target Area 1

Amendment VIII

May 2, 2024

This document serves to provide clarification and updates to the Community Air Monitoring Plan (CAMP) for the Gowanus Canal Superfund Site, Remedial Target Area (RTA) 1, dated February 23, 2021.

RTA1 Supplemental Dredging Flushing Tunnel

Sediment removal and associated activities are planned to take place at the head-end of RTA1 (Sta 0+00 to 3+00) as described in the April 22, 2024 memorandum entitled *RTA1 Supplemental Dredging Scope of Work*. The purpose of this Amendment to the RTA1 CAMP is to describe the air monitoring that will take place during these dredging activities.

Monitoring Station Locations

A five-station network will be in place along the perimeter of the dredging area, which includes active dredging, water treatment barges, and sediment transloading activities. Three of the stations will be fixed and two of the stations will be portable such that stations can be re-located as needed to accommodate changes in locations to dredging activities and changes in wind direction. The approximate locations of four of the five stations are shown in Figure 1 attached herein. Additionally, one CAMP station will be installed at the end of Huntington St to address potential emissions from transloading activities; and two CAMP stations will be operated from the Staging Area at 659 Smith Street, where dredged materials may be stored. Descriptions of each proposed monitoring location are provided in Table 1, below.

Table 1: Station Location and Descriptions

Station ID	Location Description	Approximate GPS Coordinates
FT1	North end of canal at Butler Street	40°40'55.12"N 73°59'11.84"W
FT2	Western dead end at DeGraw Street	40°40'51.12"N 73°59'16.07"W
FT3	Union Street Bridge	mobile station, variable coordinates
FT4	Carroll Street Bridge	mobile station, variable coordinates
FT5	Dead end at Huntington Street	40°40'30.05"N 73°59'45.74"W
201	Staging Area, near Bay Street	40°40'14.86"N 73°59'59.09"W
202	Staging Area, near met station	40°40'10.20"N 73°59'59.95"W

Monitoring Parameters

Particulate matter as PM₁₀ and volatile organics as TVOC (Total Volatile Organic Compounds) will be monitored at all locations on a continuous basis whilst supplemental dredging activities are in progress. These data will be collected on a 24-hour-per-day basis on all days during the estimated calendar period May 6- July 1, 2024. More details regarding the instrumentation to be used are provided in the RTA1 CAMP referenced above. These details include averaging times (15 minutes), data logging, and reporting procedures. In addition, hydrogen sulfide will be monitored on a regular basis at all sampling locations.

Daily measurements in accordance with practices defined in the RTA1 CAMP are planned with more frequent surveys as needed based upon odor observations. Summa canister sampling will also be conducted during supplemental dredging activities, following the same weekly frequency as defined in the RTA1 CAMP. Meteorological data will be collected on a continuous basis at the Smith Street staging area. These data will include wind speed and direction. The latter data will assist in the repositioning of the mobile stations on a daily basis as needed, as well as identifying upwind and downwind locations for TO-15 sampling.

Concentrations Above Action Limits (CAALs)

TVOC and PM₁₀ concentrations (as 15-minute averages) will be compared on a continuous basis to Alert and Action Limits for these same parameters. Notification and response actions will be consistent with those found in the RTA1 CAMP.

Data Reporting

Data reports will be issued on a weekly basis. The contents of these reports will be consistent with those prepared during the RTA1 remediation program.

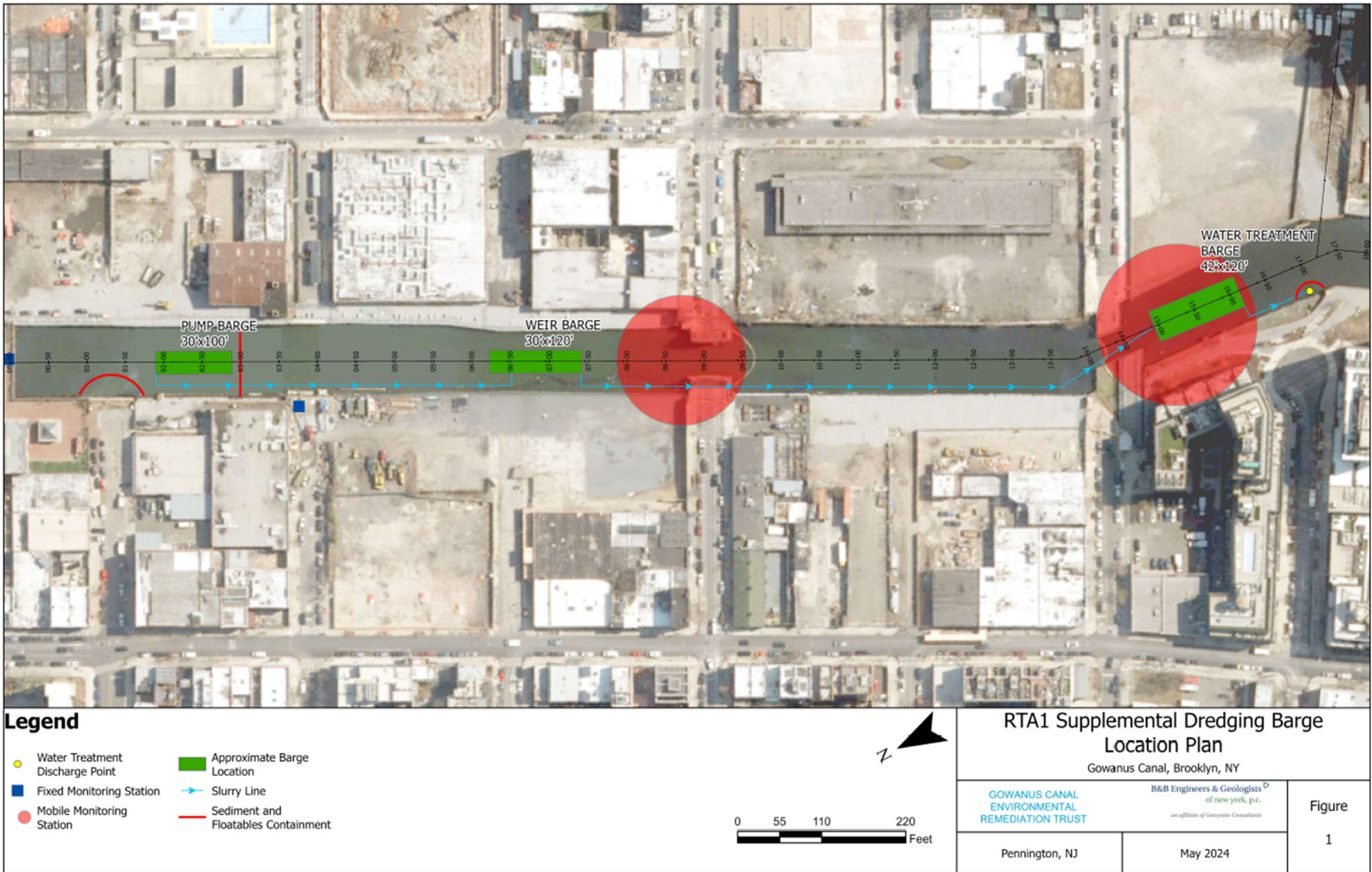


Figure1A: Flushing Tunnel Dredging Barge Location Plan with Potential CAMP Stations Identified