

**GOWANUS CANAL SUPERFUND SITE  
RTA2 REMEDIAL CONSTRUCTION  
Water Quality Monitoring Weekly Data Summary**

**PERIOD: December 30, 2024 – January 3, 2025**

**Date of Report: January 7, 2025**

## **Report Contents**

- Scope of Monitoring
- Report of Exceedances
- Turbidity Buoy Data
- Summary of Visual Observations

*Prepared by*

**B&B Engineers & Geologists**   
of new york, p.c.

*an affiliate of Geosyntec Consultants*

1255 Roberts Blvd, Suite 200  
Kennesaw, GA 30144  
Project Number JR0289B

## 1. SCOPE OF MONITORING

### 1.1 Buoy Locations

In accordance with the Water Quality Monitoring Plan for In-waterway Construction Activities (WQMP) issued March 27, 2024, buoys equipped with multi-parameter water quality sondes, were deployed to monitor turbidity related to RTA2 construction activities. Buoys were deployed in the Fourth Street Turning Basin (TB4) to monitor background turbidity unaffected by in-water construction activities and at the North Carroll Street Bridge, which is referred to as the ambient buoy. A sentinel buoy was deployed north of 3<sup>rd</sup> Street Bridge (3SB), along the west bulkhead. These buoys (Figure 1) are in use to monitor the RTA2 pre-construction activities.

All readings from buoys were transmitted via telemetry at 15-minute intervals. The instrument used to collect turbidity from the buoys is an In-Situ VuLink (telemetry) and AquaTroll500 (sonde), equipped with optical sensors capable of reading turbidity levels with an accuracy of +/- 0.5 NTU.

### 1.2 Summary of Monitoring Adjustments during Construction

- August 9, 2024, after the conclusion of RTA1 WQMP, two additional buoys were added to the RTA2 WQMP, for a total of three sentinel buoys. The ambient buoy was moved to approximately ten meters north of Carroll Street Bridge, on the west side of the canal (ambient). A sentinel buoy was placed approximately twenty meters north of 3<sup>rd</sup> Street Bridge on the west side (3SB). A sentinel buoy was placed in Fourth Street Turning Basin (TB4). The 9<sup>th</sup> Street Bridge sentinel buoy (9SB) was not moved.
- To reduce instrument downtime, the 9th Street Bridge sentinel buoy (9SB) was relocated to the northeast side of the 9th Street Bridge on August 19, 2024. After two days of data collection, elevated turbidity readings were observed both during and outside of work hours. Consequently, on August 21, 2024, the buoy was moved again, this time to the northeast corner of the Hamilton Street Bridge.
- Turbidity readings at the Hamilton Street Bridge location exceeded 100 NTU both during and outside working hours. However, these readings were not representative of the actual turbidity within the RTA2 work area. Due to commercial traffic, a safe location for the sonde and buoy could not be found south of the 9th Street Bridge. Consequently, the sonde and buoy were relocated to the west side, 5 meters north of the 9th Street Bridge on Tuesday, August 27, 2024, at 08:15.
- Turbidity readings at 9SB were noted to be erratic and exceed 100 NTU both during and outside working hours. The buoy was moved approximately 20 meters north of 9<sup>th</sup> Street Bridge on Monday, September 9, 2024.
- On September 16, 2024, the 9SB was deselected from construction monitoring, as there are no construction activities in the main canal or in the vicinity of 9<sup>th</sup> Street Bridge. The

buoy will remain in the water to collect background data as it is believed this area has naturally high NTU readings. A spot check zero calibration was performed on the buoy on Wednesday, September 18, 2024 to confirm the sensors were reading properly during this background monitoring period.

- On November 7, 2024, the ambient sonde and buoy was moved to the center of Carroll Street Bridge in an effort to reduce instrument downtime due to poor cell signal. This area was found to have a 100% cellular signal.
- On November 18, 2024, the sentinel buoy in TB4 was deselected from construction monitoring due to instrument errors. The buoy will remain out of service until maintenance and field observations can be made.
- On November 25, 2024, the 9SB sonde and buoy were placed back into the water quality monitoring program.
- On December 18, 2024, the 9SB sonde and buoy were relocated south of 9<sup>th</sup> Street Bridge along the eastern bulkhead, to avoid construction vessel traffic and shallow waters which had been resulting in false elevated readings, particularly during low tide events.



**1.3 Current Reporting Period Scope of Monitoring**

During the week of December 30, 2024, three buoys equipped with multi-parameter water quality sondes were deployed as described in Section 1.2.

Due to the federal holiday, readings were not made on January 1<sup>st</sup>, 2025.

All readings from buoys were transmitted via telemetry at 15-minute intervals. The instrument used to collect turbidity and DO from the buoys is an In-Situ VuLink (telemetry) and AquaTroll500 (sonde), equipped with optical sensors capable of reading turbidity levels with an accuracy of +/-0.5 NTU and DO levels with an accuracy of +/-0.1 mg/L.

Visual observations of turbidity and sheen are summarized in Section 5.

**1.4 Meteorological Conditions**

The weather conditions onsite were as follows:

Meteorological Parameters	12/30/2024	12/31/2024	1/1/2025	1/2/2025	12/3/2025
<i>Wind Direction (from)</i>	ENE	WSW	W	NNW	NNE
<i>Wind Speed (mph)</i>	5.8	6.6	4.0	6.2	7.0
<i>Temperature (°F)</i>	48.7	51.9	47.1	41.1	36.1
<i>Humidity (%)</i>	99.6	82.9	73.6	65.1	80.3
<i>Barometric Pressure (inHg)</i>	30.19	30.03	30.05	30.11	29.93
<i>Precipitation (Inch)</i>	0.288	0.4	0.2	0.0	0.0

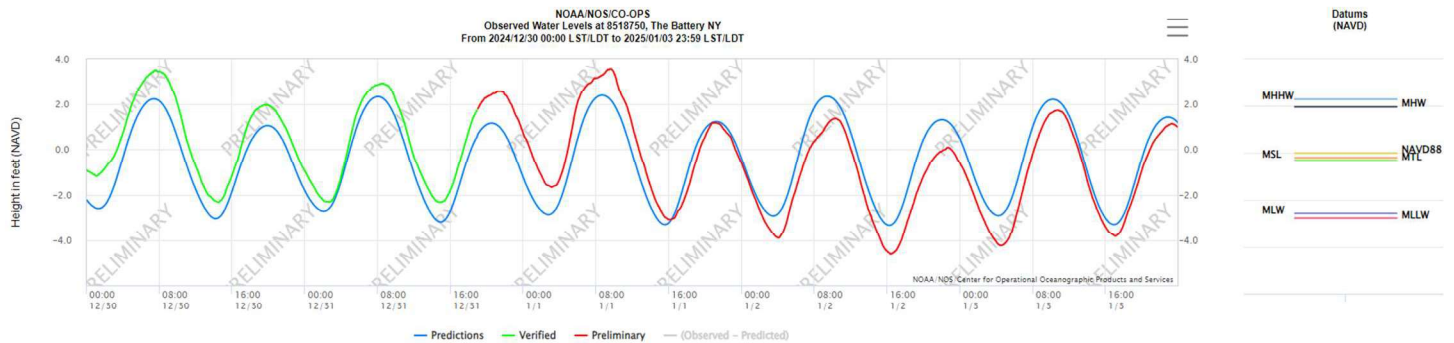
Table 1 - Summary of Weather Conditions for reporting period.

## 1.5 Tidal Conditions

Tidal data from the Battery (National Oceanic and Atmospheric Administration [NOAA] Station 8518750) was reviewed and is summarized as follows:

Date	Time (LST/LDT)	Predicted (ft)	Preliminary (ft)	High/Low
Monday, December 30, 2024	1:18 AM	-2.6	-1.12	L
Monday, December 30, 2024	7:23 AM	2.24	3.45	H
Monday, December 30, 2024	2:11 PM	-3.04	-2.28	L
Monday, December 30, 2024	7:53 PM	1.06	1.98	H
Tuesday, December 31, 2024	2:03 AM	-2.72	-2.24	L
Tuesday, December 31, 2024	8:01 AM	2.33	2.87	H
Tuesday, December 31, 2024	2:54 PM	-3.19	-2.32	L
Tuesday, December 31, 2024	8:30 PM	1.16	2.43	H
Wednesday, January 1, 2025	2:45 AM	-2.86	-1.59	L
Wednesday, January 1, 2025	8:39 AM	2.4	3.25	H
Wednesday, January 1, 2025	3:33 PM	-3.3	-3	L
Wednesday, January 1, 2025	9:12 PM	1.23	1.17	H
Thursday, January 2, 2025	3:28 AM	-2.92	-3.75	L
Thursday, January 2, 2025	9:23 AM	2.35	1.12	H
Thursday, January 2, 2025	4:13 PM	-3.33	-4.53	L
Thursday, January 2, 2025	9:59 PM	1.32	-0.06	H
Friday, January 3, 2025	4:12 AM	-2.91	-4.18	L
Friday, January 3, 2025	10:12 AM	2.22	1.66	H
Friday, January 3, 2025	4:54 PM	-3.3	-3.79	L
Friday, January 3, 2025	10:51 PM	1.43	1.09	H

**Table 2** - NOAA Preliminary observations and predictions.



**Figure 2** - Tidal Chart for reporting period.

## 2. REPORT OF EXCEEDANCES

An exceedance of the quantitative trigger and action criterion occurred at the 9<sup>th</sup> Street Bridge Sentinel Buoy on Thursday, January 2 from 16:30 to 17:30 due to extended backfilling operations

at 37 9<sup>th</sup> to deter further upland hardscape movement as well as potential resuspended sediment caused by propwash from passing tugs moving gravel barges and the AquaBlok barge. No other readings exceeded the trigger or action criterion during the monitoring period.

Turbidity and floatables were observed throughout the reporting period unrelated to construction activities.

- **Trigger criterion** – Any of the following:
  - The rolling average of the relevant sentinel buoy turbidity measurements over a one-hour period exceeds the rolling average of the ambient buoy turbidity measurements by 20 NTU excluding any eliminated outlier measurements and in-waterway construction activities cannot be immediately excluded as the source following consultation with EPA; or
  - Either an oil sheen or a turbidity plume is visually observed at the relevant sentinel buoy and in-waterway construction activities are readily identified as the source.
- **Action criterion** – Any of the following:
  - The rolling average of the turbidity measurements of the sentinel buoy outside of RTA2 over a one-hour period exceeds the rolling average of the ambient buoy turbidity measurements by 40 NTU excluding any eliminated outlier measurements and in-waterway construction activities cannot be immediately excluded as the source following consultation with EPA; or
  - Either an oil sheen or a turbidity plume is visually observed outside of RTA2, and any deployed engineering controls and in-waterway construction activities are readily identified as the source.

An outlier is defined as a reading that is outside the range of 50 to 200 percent of the average of the three previous readings. In addition, to be considered an outlier, the subsequent reading must return to a range of 75 to 133 percent of the average of the three readings preceding the outlier.

## **2.1 Response to Criteria Exceedances**

The trigger level criterion serves to provide early notification to the contractor of construction activities that may lead to an exceedance of the action level criterion. In the event of an exceedance to the trigger criterion, the contractor will not be stopped, and the contractor will be directed to investigate the source of the exceedance and evaluate Best Management Practices (BMPs). In the event of an exceedance to the action level criterion, in-waterway construction activities may be slowed or temporarily suspended as necessary while the contractor investigates the source of the exceedance and appropriate mitigation, and corrective measures are determined. A more detailed description of responses to exceedances of the trigger and action level criteria is provided in Section 4.2 of the WQMP.

An exceedance to the trigger and action criterion occurred at the end of construction activities at 9SB on Thursday, January 2 as a result of extensive backfilling operations at 37 9<sup>th</sup>. Visual inspections at 17:30 did not confirm the exceedance. Visual inspections were also performed the

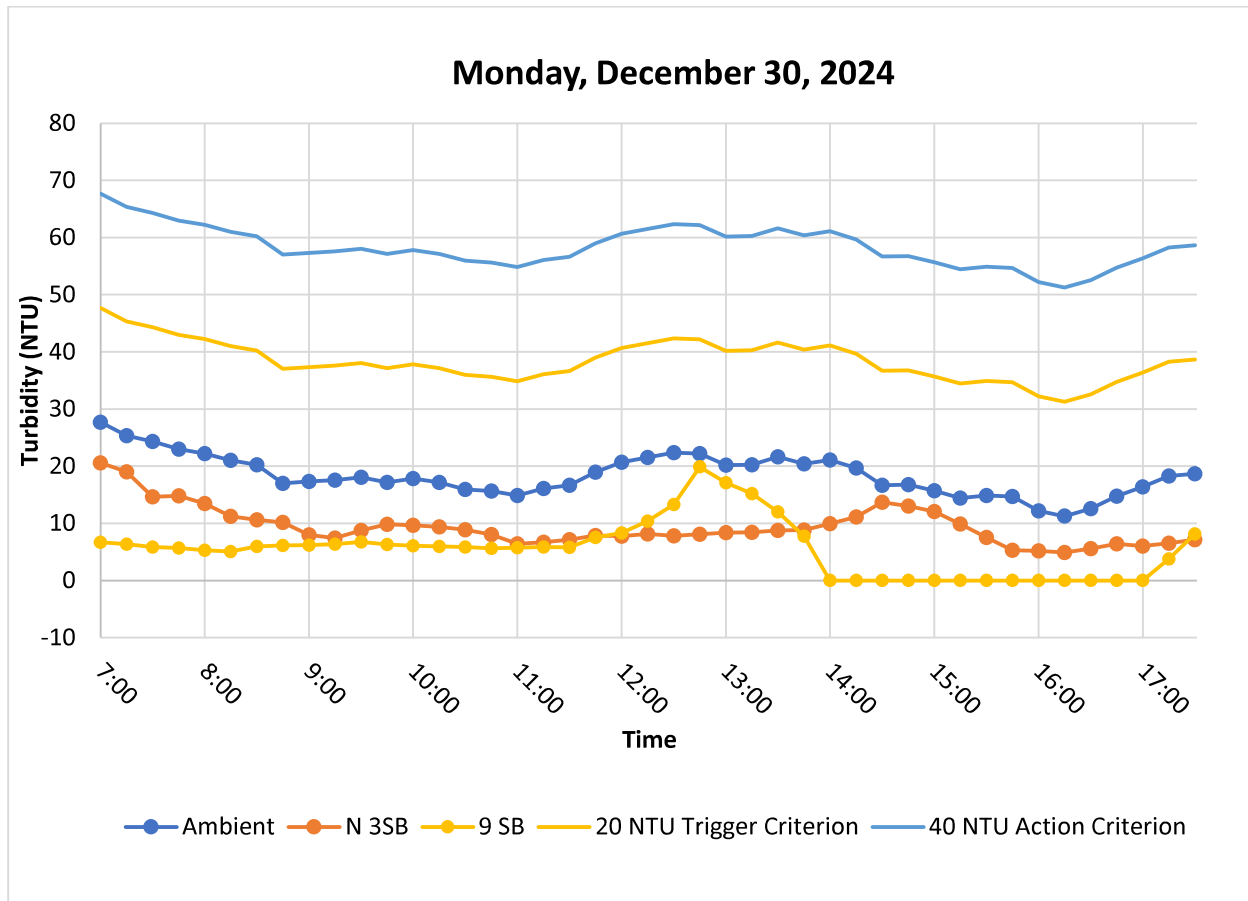


following morning and did not show signs of exceedances. Turbidity readings at the 9SB at the beginning of construction activities on Friday, January 3 had also stabilized and were no longer showing signs of an exceedance for no further action was required.

### 3. TURBIDITY BUOY DATA

Throughout the reporting period, readings at the Ambient, 3SB, and 9SB sondes remained relatively stable. No data was recorded on Wednesday, January 1<sup>st</sup>, 2025, due to no work being performed on account of the holiday.

#### 3.1 Monday, December 30, 2024



**Figure 3.** Hourly rolling average turbidity readings from 07:00 to 17:30.



3.2 Tuesday, December 31, 2024

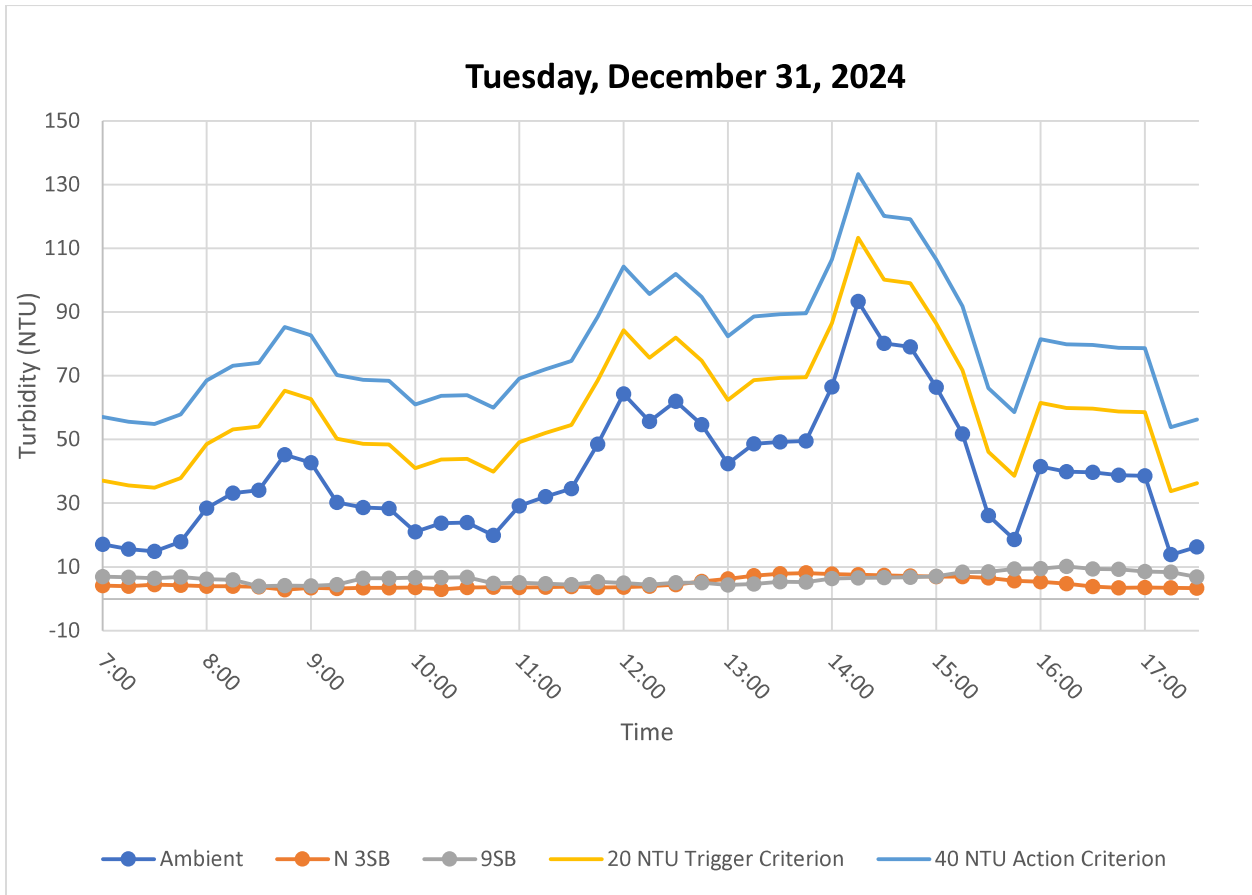


Figure 4. Hourly rolling average turbidity readings from 07:00 to 17:30.

3.3 Thursday, January 2, 2025

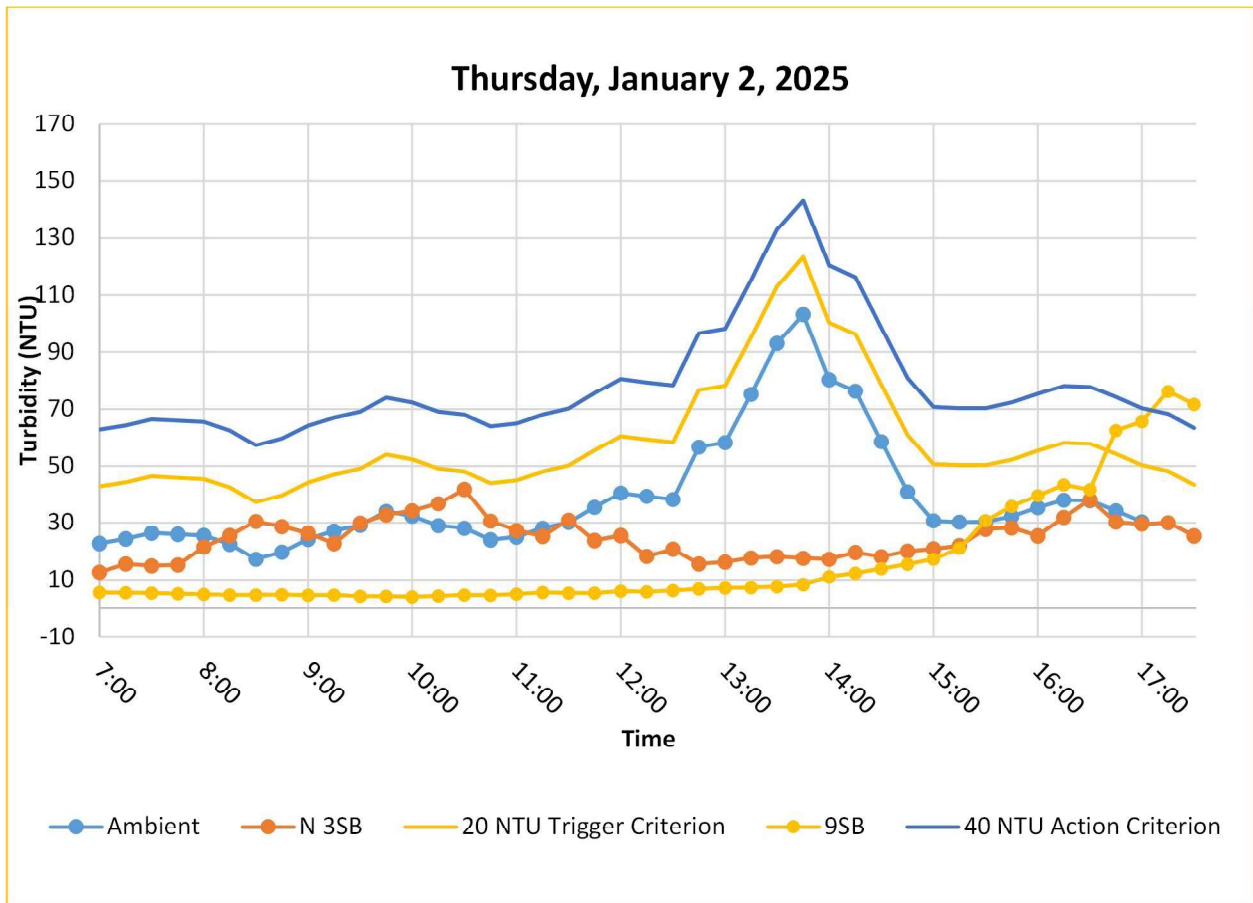
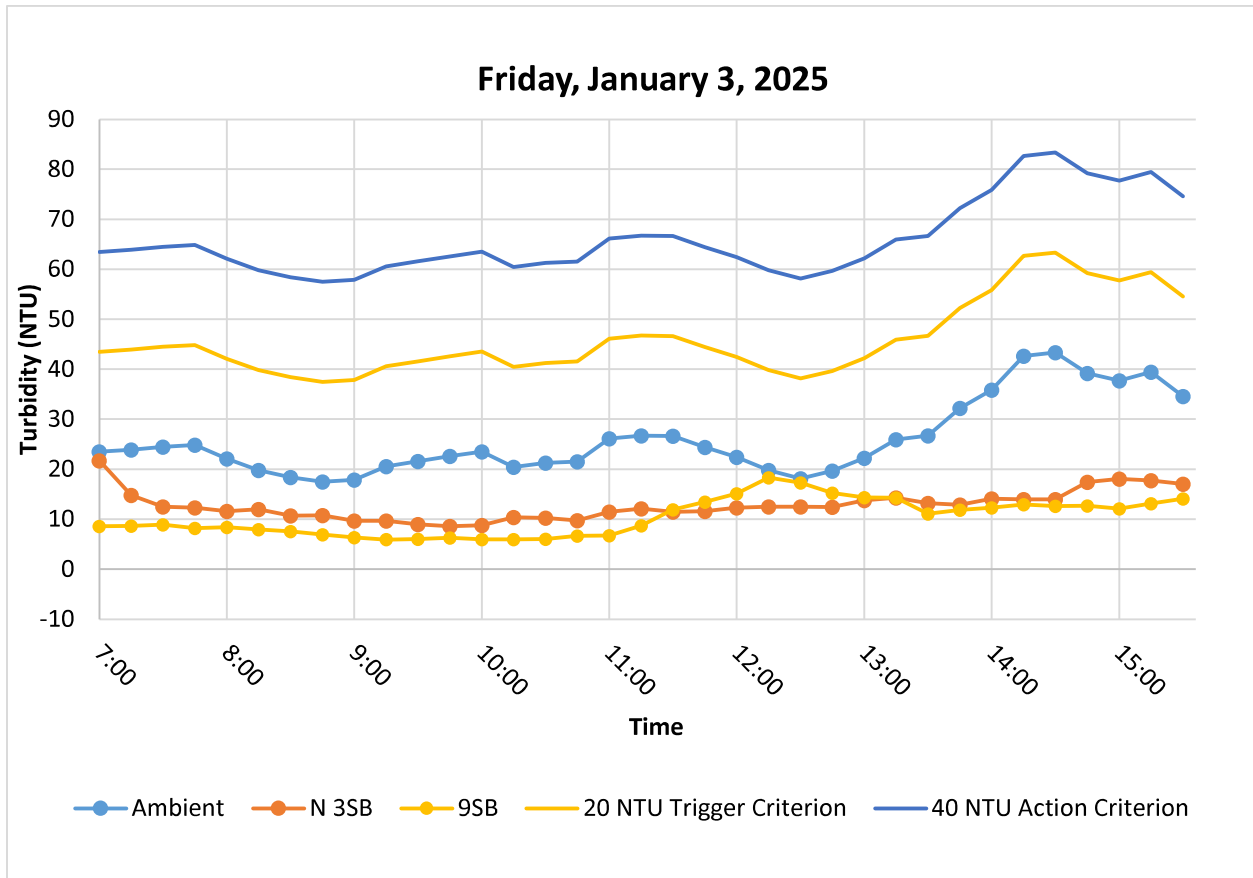


Figure 5. Hourly rolling average turbidity readings from 07:00 to 17:30.

3.4 Friday, January 3, 2025



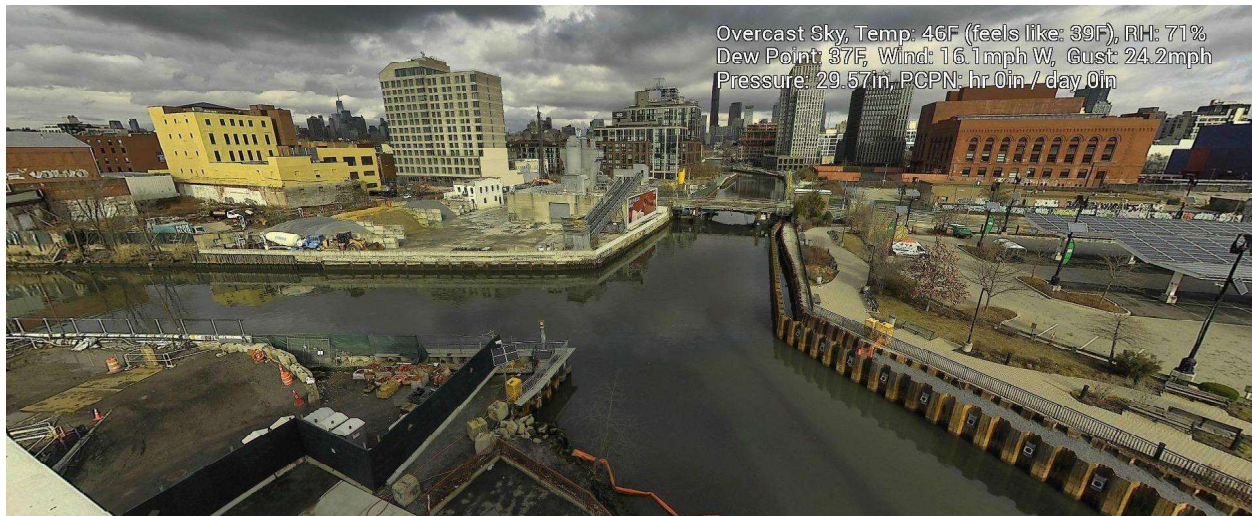
**Figure 6.** Hourly rolling average turbidity readings from 07:00 to 15:30.

#### 4. SUMMARY OF VISUAL OBSERVATIONS

Throughout the majority of the reporting period, sheens in the RTA2 areas ranged from minimal to moderate. Sheen was observed from Huntington Street on Thursday, January 2<sup>nd</sup> likely produced by rusting portions of the existing bulkhead on the Huntington Street end.



**Figure 7 – December 31, 2024.** General Conditions in Canal north of 9<sup>th</sup> Street Bridge during in-waterway construction activities.

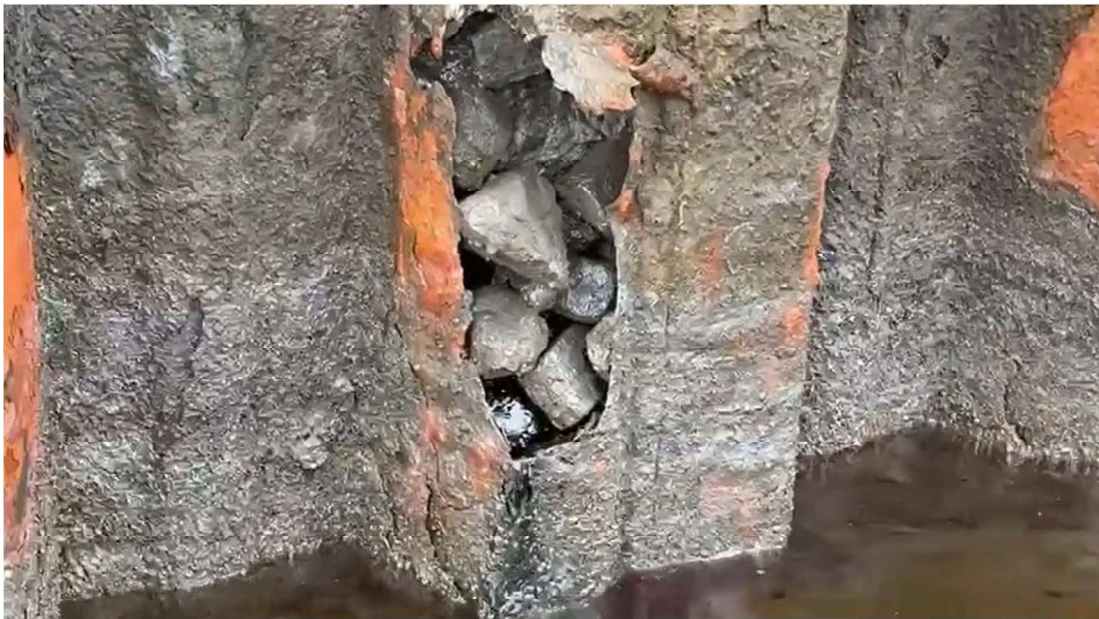


**Figure 8 – January 1, 2025.** General Conditions in Canal south of 3<sup>rd</sup> Street Bridge during in-waterway construction activities.





**Figure 9 – January 2, 2025.** Sheen observations at Huntington Street unrelated to in-waterway construction activities.



**Figure 10 – January 2, 2025.** Bulkhead conditions at Huntington Street resulting in sheen observations.



**Figure 11– January 3, 2025.** General Conditions in Canal north of 9<sup>th</sup> Street Bridge during in-waterway construction activities.

Table 3

Monday, Dec 30, 2024

Date	Time	Turbidity (NTU)				Rolling Average Turbidity (NTU)					Difference (NTU)		
		Ambient	N35B	95B		Ambient	N35B	95B	N35B - Ambient	95B - Ambient	95B - Ambient		
12/30/2024	7:00:00	23.64611816	16.50346375	5.441473007		23.65	16.50	5.44	-7.14	-18.20			
12/30/2024	7:15:00	23.23138618	10.78350067	3.065219164		23.44	13.64	4.25	-9.80	-19.19			
12/30/2024	7:30:00	27.78749657	12.76310062	6.400213242		24.89	13.35	4.97	-11.54	-19.92			
12/30/2024	7:45:00	16.54831886	17.81292152	6.192273617		22.80	14.47	5.27	-8.34	-17.53			
12/30/2024	8:00:00	19.89281845	9.515054703	5.185948849		22.22	13.48	5.26	-8.75	-16.96			
12/30/2024	8:15:00	17.59596825	5.273396015	4.353128433		21.01	11.23	5.04	-9.78	-15.97			
12/30/2024	8:30:00	19.23475456	7.723928452	7.775409698		20.21	10.62	5.98	-9.59	-14.23			
12/30/2024	8:45:00	11.7904892	10.52293396	7.033734798		17.01	10.17	6.11	-6.84	-10.90			
12/30/2024	9:00:00	17.97055435	6.829366207	6.679701328		17.30	7.97	6.21	-9.32	-11.09			
12/30/2024	9:15:00	21.26405525	6.69578886	5.788717747		17.57	7.41	6.33	-10.16	-11.25			
12/30/2024	9:30:00	20.01780891	11.89519215	6.445031643		18.06	8.73	6.74	-9.32	-11.31			
12/30/2024	9:45:00	14.73145771	13.2264204	5.379525661		17.15	9.83	6.27	-7.32	-10.89			
12/30/2024	10:00:00	15.12759113	9.699884415	6.173210144		17.82	9.67	6.09	-8.15	-11.73			
12/30/2024	10:15:00	14.58840847	5.253682613	5.940347195		17.15	9.35	5.95	-7.79	-11.20			
12/30/2024	10:30:00	15.28151798	4.332023144	5.247159481		15.95	8.88	5.84	-7.07	-10.11			
12/30/2024	10:45:00	18.36745834	7.691741467	5.46404314		15.62	8.04	5.64	-7.58	-9.98			
12/30/2024	11:00:00	10.89067459	5.039680958	5.957960129		14.85	6.40	5.76	-8.45	-9.09			
12/30/2024	11:15:00	21.24793434	11.17914867	6.606200695		16.08	6.70	5.84	-9.38	-10.23			
12/30/2024	11:30:00	17.45342827	7.324186325	5.666058064		16.65	7.11	5.79	-9.53	-10.86			
12/30/2024	11:45:00	26.8878994	7.934440136	13.920866887		18.97	7.83	7.52	-11.14	-11.45			
12/30/2024	12:00:00	26.95353508	7.370240688	9.527046204		20.69	7.77	8.34	-12.92	-12.35			
12/30/2024	12:15:00	15.08113861	6.832758427	16.05345917		21.52	8.13	10.35	-13.40	-11.17			
12/30/2024	12:30:00	25.46256065	9.528324127	21.17685509		22.37	7.80	13.27	-14.57	-9.10			
12/30/2024	12:45:00	16.57337952	8.662926674	--		22.19	8.07	15.17	-14.13	-7.02			
12/30/2024	13:00:00	16.86056519	9.392834663	0		20.19	8.36	11.69	-11.83	-8.50			
12/30/2024	13:15:00	27.3333683	7.567603588	0		20.26	8.40	9.31	-11.87	-10.95			
12/30/2024	13:30:00	21.88030815	8.734994888	0		21.62	8.78	5.29	-12.84	-16.33			
12/30/2024	13:45:00	19.37345123	9.670098305	--		20.40	8.81	0.00	-11.60	-20.40			
12/30/2024	14:00:00	20.06039619	14.15904903	--		21.10	9.90	0.00	-11.20	-21.10			
12/30/2024	14:15:00	9.601910591	15.45468903	--		19.65	11.12	0.00	-8.53	-19.65			
12/30/2024	14:30:00	12.44933414	20.30182838	--		16.67	13.66	0.00	-3.01	-16.67			
12/30/2024	14:45:00	22.31019402	5.354122162	--		16.76	12.99	--	-3.77	--			
12/30/2024	15:00:00	13.99315643	5.04501915	--		15.68	12.06	--	-3.62	--			
12/30/2024	15:15:00	13.82182312	3.210388899	--		14.44	9.87	--	-4.56	--			
12/30/2024	15:30:00	11.8167181	3.726634026	--		14.88	7.53	--	-7.35	--			
12/30/2024	15:45:00	11.41232777	--	--		14.67	4.33	--	-10.34	--			
12/30/2024	16:00:00	9.926850319	4.637084961	--		12.19	4.15	--	-8.04	--			
12/30/2024	16:15:00	9.362987518	3.793121576	--		11.27	3.84	--	-7.43	--			
12/30/2024	16:30:00	20.24937439	6.542070866	--		12.55	4.67	--	-7.88	--			
12/30/2024	16:45:00	22.82194519	8.015152931	--		14.75	5.75	--	-9.01	--			
12/30/2024	17:00:00	19.38928413	6.938951969	--		16.35	5.99	--	-10.36	--			
12/30/2024	17:15:00	19.55132484	7.239915371	--		18.27	6.51	--	-11.77	--			
12/30/2024	17:30:00	11.26580143	6.790590286	--		18.66	7.11	--	-11.55	--			



Table 4

Tuesday, Dec 31, 2024

Date	Time	Turbidity (NTU)			Rolling Average Turbidity (NTU)					Difference (NTU)	
		Ambient	N3SB	9SB	Ambient	N3SB	9SB	N3SB - Ambient	9SB - Ambient		
12/31/24	7:00:00	16.06	2.04	5.27	16.06	2.04	5.27	-14.02	-10.79		
12/31/24	7:15:00	12.07	3.91	--	14.06	2.97	5.27	-11.09	-8.79		
12/31/24	7:30:00	13.07	--	2.79	13.73	2.97	4.03	-10.76	-9.70		
12/31/24	7:45:00	32.20	2.78	5.68	18.35	2.91	4.58	-15.44	-13.77		
12/31/24	8:00:00	69.03	3.76	2.47	28.49	3.12	4.05	-25.36	-24.44		
12/31/24	8:15:00	39.53	2.18	4.56	33.18	3.16	3.87	-30.02	-29.31		
12/31/24	8:30:00	16.46	2.49	4.39	34.06	2.80	3.98	-31.26	-30.08		
12/31/24	8:45:00	69.08	2.97	3.80	45.26	2.84	4.18	-42.43	-41.08		
12/31/24	9:00:00	19.37	--	5.22	42.70	2.85	4.09	-39.85	-38.61		
12/31/24	9:15:00	6.78	2.68	4.39	30.24	2.58	4.47	-27.66	-25.77		
12/31/24	9:30:00	31.62	3.37	--	28.66	2.88	4.45	-25.78	-24.21		
12/31/24	9:45:00	15.05	2.59	4.18	28.38	2.90	4.40	-25.47	-23.98		
12/31/24	10:00:00	32.15	3.29	4.67	20.99	2.98	4.61	-18.01	-16.38		
12/31/24	10:15:00	32.81	2.78	5.19	23.68	2.94	4.61	-20.74	-19.07		
12/31/24	10:30:00	7.85	--	4.81	23.90	3.01	4.71	-20.89	-19.18		
12/31/24	10:45:00	11.77	3.77	5.18	19.93	3.11	4.81	-16.82	-15.12		
12/31/24	11:00:00	61.11	2.10	5.32	29.14	2.98	5.04	-26.16	-24.10		
12/31/24	11:15:00	46.70	3.78	3.11	32.05	3.11	4.72	-28.94	-27.32		
12/31/24	11:30:00	45.53	3.90	3.77	34.59	3.39	4.44	-31.21	-30.15		
12/31/24	11:45:00	77.57	4.11	--	48.54	3.53	4.35	-45.01	-44.19		
12/31/24	12:00:00	90.40	4.07	3.15	64.26	3.59	3.84	-60.67	-60.42		
12/31/24	12:15:00	17.92	3.76	3.01	55.62	3.92	3.26	-51.70	-52.36		
12/31/24	12:30:00	78.44	6.17	6.32	61.97	4.40	4.06	-57.57	-57.91		
12/31/24	12:45:00	9.16	9.20	3.77	54.70	5.46	4.06	-49.24	-50.63		
12/31/24	13:00:00	16.07	8.12	5.59	42.40	6.26	4.37	-36.13	-38.03		
12/31/24	13:15:00	--	9.00	4.29	30.40	7.25	4.60	-23.15	-25.80		
12/31/24	13:30:00	21.38	6.79	6.82	31.26	7.85	5.36	-23.41	-25.90		
12/31/24	13:45:00	79.84	7.44	5.78	31.61	8.11	5.25	-23.50	-26.36		
12/31/24	14:00:00	93.79	7.54	9.49	52.77	7.78	6.40	-44.99	-46.38		
12/31/24	14:15:00	--	6.95	6.43	65.00	7.54	6.56	-57.46	-58.44		
12/31/24	14:30:00	55.39	7.97	4.73	62.60	7.34	6.65	-55.26	-55.95		
12/31/24	14:45:00	16.14	5.75	7.22	61.29	7.13	6.73	-54.16	-54.56		
12/31/24	15:00:00	16.55	6.41	7.25	45.47	6.93	7.02	-38.54	-38.44		
12/31/24	15:15:00	20.51	7.50	--	27.15	6.92	6.41	-20.23	-20.74		
12/31/24	15:30:00	22.12	4.90	7.36	26.14	6.51	6.64	-19.64	-19.50		
12/31/24	15:45:00	17.63	3.61	9.00	18.59	5.63	7.71	-12.96	-10.89		
12/31/24	16:00:00	--	4.11	7.92	19.20	5.31	7.88	-13.90	-11.32		
12/31/24	16:15:00	8.72	3.82	10.69	17.25	4.79	8.74	-12.46	-8.50		
12/31/24	16:30:00	19.37	2.64	11.92	16.96	3.82	9.38	-13.15	-7.58		
12/31/24	16:45:00	17.64	3.17	6.98	15.84	3.47	9.30	-12.37	-6.54		
12/31/24	17:00:00	16.86	3.79	5.24	15.65	3.51	8.55	-12.14	-7.10		
12/31/24	17:15:00	6.68	3.65	7.18	13.85	3.41	8.40	-10.44	-5.45		
12/31/24	17:30:00	20.81	3.26	3.04	16.27	3.30	6.87	-12.97	-9.40		

Table 5

Thursday, Jan 2, 2025

Date	Time	Turbidity (NTU)					Rolling Average Turbidity (NTU)					Difference (NTU)	
		Ambient	N3SB	TB4	9SB	Ambient	N3SB	9SB	N3SB - Ambient	9SB - Ambient			
1/2/2025	7:00:00	34.91521835	7.321973324	7.321973324	6.947540283	34.92	7.32	6.95	-27.59	-27.97			
1/2/2025	7:15:00	32.35335922	25.83830261	25.83830261	4.732679367	33.63	16.58	5.84	-17.05	-27.79			
1/2/2025	7:30:00	19.54952049	19.83638382	19.83638382	4.538216114	28.94	17.67	5.41	-11.27	-23.53			
1/2/2025	7:45:00	21.94441795	17.92699051	17.92699051	5.016012192	27.19	17.73	5.31	-9.46	-21.88			
1/2/2025	8:00:00	18.81547546	37.15338516	37.15338516	3.95807686	25.52	21.62	5.04	-3.90	-20.48			
1/2/2025	8:15:00	19.98614693	26.68480301	26.68480301	5.981199265	22.53	25.49	4.84	2.96	-17.69			
1/2/2025	8:30:00	6.269519806	50.72095871	50.72095871	4.968865395	17.31	30.46	4.89	13.15	-12.42			
1/2/2025	8:45:00	31.7144928	10.87629223	10.87629223	4.633034706	19.75	28.67	4.91	8.93	-14.84			
1/2/2025	9:00:00	44.44756699	5.859287262	5.859287262	4.231167793	24.25	26.26	4.75	2.01	-19.49			
1/2/2025	9:15:00	32.81179428	20.09645653	20.09645653	4.172251225	27.05	22.85	4.80	-4.20	-22.25			
1/2/2025	9:30:00	30.18263245	62.11800385	62.11800385	4.121654034	29.09	29.93	4.43	0.85	-24.66			
1/2/2025	9:45:00	30.8355999	--	64.84119415	4.699213982	34.00	24.74	4.37	-9.26	-29.63			
1/2/2025	10:00:00	23.34378815	18.4268074	18.4268074	3.823842764	32.32	26.63	4.21	-5.70	-28.11			
1/2/2025	10:15:00	27.95527458	18.63780975	18.63780975	5.784828663	29.03	29.82	4.52	0.79	-24.51			
1/2/2025	10:30:00	27.84603119	45.24448013	45.24448013	5.719600201	28.03	36.11	4.83	8.07	-23.20			
1/2/2025	10:45:00	10.24005795	5.385420322	5.385420322	3.701175451	24.04	21.92	4.75	-2.12	-19.30			
1/2/2025	11:00:00	35.69507217	--	48.53122711	6.831876278	25.02	21.92	5.17	-3.09	-19.84			
1/2/2025	11:15:00	38.71211624	8.795459747	8.795459747	6.5750103	28.09	19.52	5.72	-8.57	-22.37			
1/2/2025	11:30:00	38.25625229	--	46.35488129	4.902998924	30.15	19.81	5.55	-10.34	-24.60			
1/2/2025	11:45:00	54.69045639	9.819710732	9.819710732	5.850047588	35.52	8.00	5.57	-27.52	-29.95			
1/2/2025	12:00:00	35.43388748	13.75929451	--	6.896461964	40.56	10.79	6.21	-29.77	-34.35			
1/2/2025	12:15:00	29.74615479	13.12267017	13.12267017	5.86549759	39.37	11.37	5.96	-27.99	-33.41			
1/2/2025	12:30:00	33.63978195	20.80736351	20.80736351	8.926332474	38.35	14.38	6.43	-23.98	-31.92			
1/2/2025	12:45:00	129.8246613	20.65503883	20.65503883	7.450973511	56.67	15.63	6.94	-41.03	-49.72			
1/2/2025	13:00:00	62.53502655	12.88991261	12.88991261	7.582475185	58.24	16.25	7.29	-41.99	-50.95			
1/2/2025	13:15:00	120.4857101	21.12449646	21.12449646	7.392496109	75.25	17.72	7.39	-57.53	-67.86			
1/2/2025	13:30:00	118.9069901	15.78234863	15.78234863	7.725691319	93.08	18.25	7.82	-74.83	-85.26			
1/2/2025	13:45:00	84.39935303	18.01066399	--	11.99663149	103.23	17.69	8.43	-85.54	-94.80			
1/2/2025	14:00:00	15.39395809	18.53274155	18.53274155	20.98501968	80.34	17.27	11.14	-63.08	-69.21			
1/2/2025	14:15:00	42.37672043	24.67831421	24.67831421	13.66412449	76.31	19.63	12.35	-56.69	-63.96			
1/2/2025	14:30:00	31.95877075	14.06966114	14.06966114	15.22205639	58.61	18.21	13.92	-40.39	-44.69			
1/2/2025	14:45:00	30.85662842	25.53884888	25.53884888	15.63905239	41.00	20.17	15.50	-20.83	-25.50			
1/2/2025	15:00:00	32.85496521	21.95815086	21.95815086	21.0471096	30.69	20.96	17.31	-9.73	-13.38			
1/2/2025	15:15:00	13.25116253	23.79558945	23.79558945	40.22031403	30.26	22.01	21.16	-8.25	-9.10			
1/2/2025	15:30:00	42.47054672	--	53.295888428	61.45083618	30.28	21.34	30.72	-8.94	0.44			
1/2/2025	15:45:00	41.81419373	16.6158886	16.6158886	40.9280014	32.25	21.98	35.86	-10.27	3.61			
1/2/2025	16:00:00	46.49124908	11.13848495	11.13848495	34.58489609	35.38	18.38	39.65	-17.00	4.27			
1/2/2025	16:15:00	46.60480499	54.760746	54.760746	40.33584976	38.13	26.58	43.50	-11.55	5.38			
1/2/2025	16:30:00	11.59238338	--	--	31.49077797	37.79	27.51	41.76	-10.29	3.96			
1/2/2025	16:45:00	24.5626297	13.1192379	13.1192379	165.4034882	34.21	23.91	62.55	-10.30	28.34			
1/2/2025	17:00:00	22.3283783	13.25951481	13.25951481	56.52799988	30.31	23.07	65.67	-7.25	35.35			
1/2/2025	17:15:00	35.9787178	13.40991497	13.40991497	87.61112976	28.21	23.64	76.27	-4.57	48.06			
1/2/2025	17:30:00	22.94618034	--	31.9790802	16.96810341	23.48	13.26	71.60	-10.22	48.12			

Table 6

Friday, Jan 3, 2025

Date	Time	Turbidity (NTU)					Rolling Average Turbidity (NTU)					Difference (NTU)		
		Ambient	N3SB	TB4	9SB	Ambient	N3SB	9SB	N3SB - Ambient	9SB - Ambient	9SB - Ambient			
1/3/2025	7:00:00	30.84892845	11.99517918	11.99517918	7.557769299	30.85	12.00	7.56	-18.85	-18.85	-23.29			
1/3/2025	7:15:00	23.58461189	14.90346527	14.90346527	8.507778168	27.22	13.45	8.03	-13.77	-13.77	-19.18			
1/3/2025	7:30:00	23.54859352	8.442501068	8.442501068	10.12870502	25.99	11.78	8.73	-14.21	-14.21	-17.26			
1/3/2025	7:45:00	23.04375267	12.75277996	12.75277996	7.811182499	25.26	12.02	8.50	-13.23	-13.23	-16.76			
1/3/2025	8:00:00	9.411038399	9.791222572	9.791222572	7.803724766	22.09	11.58	8.36	-10.51	-10.51	-13.73			
1/3/2025	8:15:00	19.40379524	14.10020542	14.10020542	5.511891842	19.80	12.00	7.95	-7.80	-7.80	-11.85			
1/3/2025	8:30:00	16.58744621	8.328767776	8.328767776	6.51405859	18.40	10.68	7.55	-7.72	-7.72	-10.85			
1/3/2025	8:45:00	19.0519619	8.894451141	8.894451141	6.80286026	17.50	10.77	6.89	-6.73	-6.73	-10.61			
1/3/2025	9:00:00	24.78317451	7.099632263	7.099632263	4.999328136	17.85	9.64	6.33	-8.20	-8.20	-11.52			
1/3/2025	9:15:00	23.02499962	10.05911064	10.05911064	5.847782135	20.57	9.70	5.94	-10.87	-10.87	-14.64			
1/3/2025	9:30:00	24.37726784	10.47799206	10.47799206	5.926850796	21.56	8.97	6.02	-12.59	-12.59	-15.55			
1/3/2025	9:45:00	21.62169456	6.445531368	6.445531368	7.638551235	22.57	8.60	6.24	-13.98	-13.98	-16.33			
1/3/2025	10:00:00	23.76591492	9.613171577	9.613171577	5.29781723	23.51	8.74	5.94	-14.78	-14.78	-17.57			
1/3/2025	10:15:00	9.46363163	15.26324844	15.26324844	5.149611473	20.45	10.37	5.97	-10.08	-10.08	-14.48			
1/3/2025	10:30:00	26.93053436	9.456139565	9.456139565	6.056331635	21.23	10.25	6.01	-10.98	-10.98	-15.22			
1/3/2025	10:45:00	25.90395927	7.9155159	7.9155159	9.180953979	21.54	9.74	6.66	-11.80	-11.80	-14.87			
1/3/2025	11:00:00	--	14.9714632	14.9714632	7.930480957	21.52	11.44	6.72	-10.07	-10.07	-14.79			
1/3/2025	11:15:00	26.77642059	12.83975601	12.83975601	15.18065929	22.27	12.09	8.70	-10.18	-10.18	-13.57			
1/3/2025	11:30:00	9.000609398	12.26486492	12.26486492	21.07360458	22.15	11.49	11.88	-10.66	-10.66	-10.27			
1/3/2025	11:45:00	15.88394451	9.993328094	9.993328094	13.85451031	19.39	11.60	13.44	-7.79	-7.79	-5.95			
1/3/2025	12:00:00	15.93652821	11.28820038	11.28820038	17.58572388	16.90	12.27	15.12	-4.63	-4.63	-1.77			
1/3/2025	12:15:00	31.452248413	15.9258213	15.9258213	23.95744324	19.81	12.46	18.33	-7.35	-7.35	-1.48			
1/3/2025	12:30:00	18.46201134	13.0915184	13.0915184	9.850910187	18.15	12.51	17.26	-5.63	-5.63	-0.88			
1/3/2025	12:45:00	16.54773331	11.6544075	11.6544075	10.87133312	19.66	12.39	15.22	-7.27	-7.27	-4.43			
1/3/2025	13:00:00	28.52780342	16.74325371	16.74325371	9.3878088	22.19	13.74	14.33	-8.44	-8.44	-7.85			
1/3/2025	13:15:00	34.62038803	13.98365784	13.98365784	17.17554474	25.92	14.28	14.25	-11.64	-11.64	-11.67			
1/3/2025	13:30:00	35.18298721	10.55914783	10.55914783	8.07454586	26.67	13.21	11.07	-13.46	-13.46	-15.60			
1/3/2025	13:45:00	46.15669632	11.35102558	11.35102558	13.76233292	32.21	12.86	11.85	-19.35	-19.35	-20.35			
1/3/2025	14:00:00	34.70698166	17.83300591	17.83300591	13.19922161	35.84	14.09	12.32	-21.74	-21.74	-23.52			
1/3/2025	14:15:00	62.57770538	16.1421051	16.1421051	12.32420254	42.65	13.97	12.91	-28.68	-28.68	-29.74			
1/3/2025	14:30:00	38.15716171	13.78516865	13.78516865	15.54195881	43.36	13.93	12.58	-29.42	-29.42	-30.78			
1/3/2025	14:45:00	14.41107178	28.02388573	28.02388573	8.528273582	39.20	17.43	12.67	-21.77	-21.77	-26.53			
1/3/2025	15:00:00	38.78380966	14.55687714	14.55687714	11.03352737	37.73	18.07	12.13	-19.66	-19.66	-25.60			
1/3/2025	15:15:00	43.22145462	16.27561951	16.27561951	18.11268997	39.43	17.76	13.11	-21.67	-21.67	-26.32			
1/3/2025	15:30:00	38.20068741	12.36975384	12.36975384	17.05988503	34.55	17.00	14.06	-17.55	-17.55	-20.50			