

**GOWANUS CANAL SUPERFUND SITE  
RTA2 REMEDIAL CONSTRUCTION  
Water Quality Monitoring Weekly Data Summary**

**PERIOD: April 28, 2025 – May 2, 2025**

**Date of Report: May 6, 2025**

## **Report Contents**

- Scope of Monitoring
- Report of Exceedances
- Turbidity Buoy Data
- Summary of Visual Observations

*Prepared by*

**B&B Engineers & Geologists**   
of new york, p.c.

*an affiliate of Geosyntec Consultants*

1255 Roberts Blvd, Suite 200  
Kennesaw, GA 30144  
Project Number JR0289B

## 1. SCOPE OF MONITORING

### 1.1 Buoy Locations

In accordance with the Water Quality Monitoring Plan for In-waterway Construction Activities (WQMP) issued March 27, 2024, buoys equipped with multi-parameter water quality sondes, were deployed to monitor turbidity related to RTA2 construction activities. Buoys were deployed in the Fourth Street Turning Basin (TB4) to monitor background turbidity unaffected by in-water construction activities and at the North Carroll Street Bridge, which is referred to as the ambient buoy. A sentinel buoy was deployed north of 3<sup>rd</sup> Street Bridge (3SB), along the west bulkhead. A sentinel buoy was deployed north of 9<sup>th</sup> Street Bridge (9SB), along the west bulkhead. These buoys (Figure 1) are in use to monitor the RTA2 pre-construction activities.

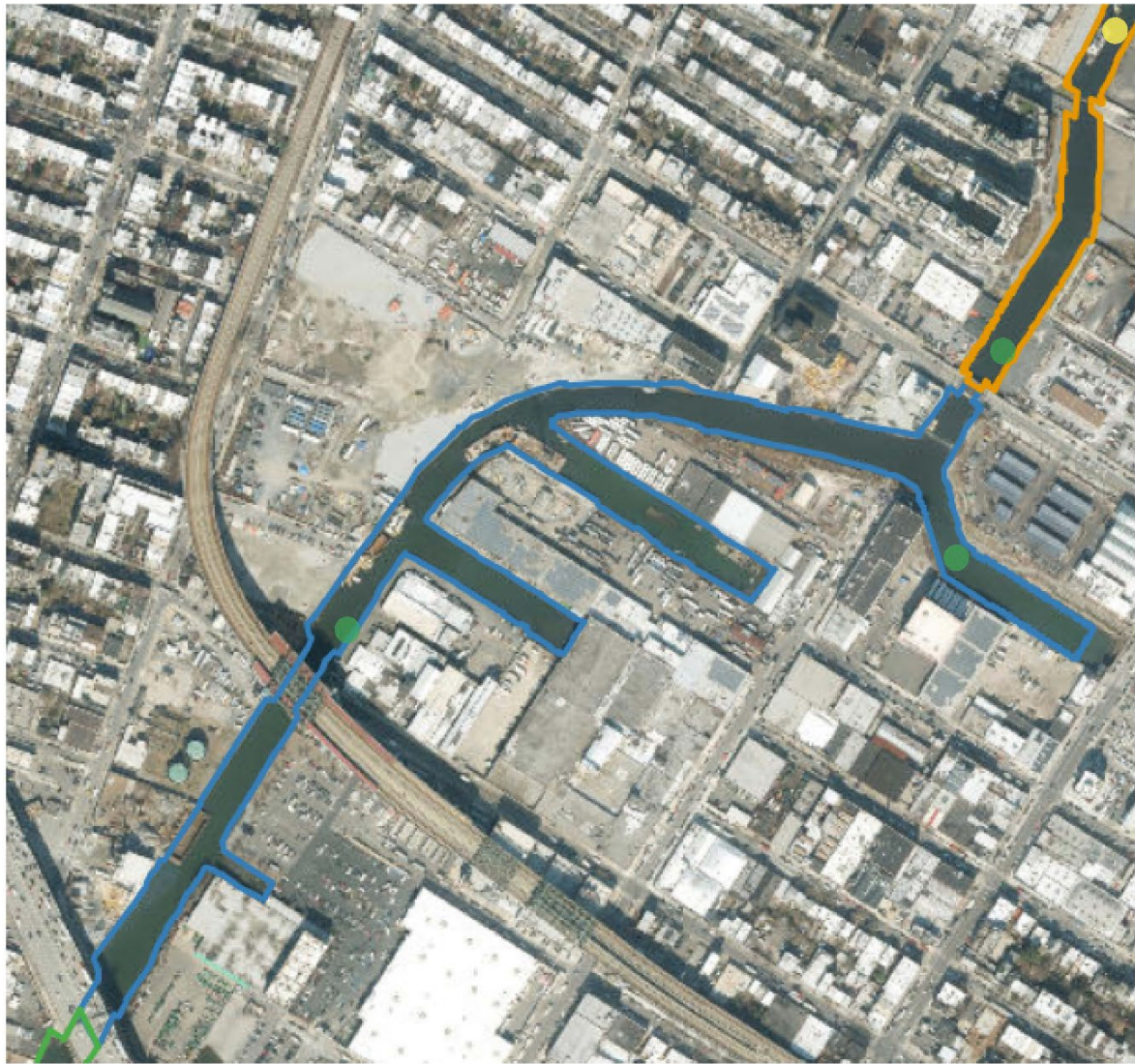
All readings from buoys were transmitted via telemetry at 15-minute intervals. The instrument used to collect turbidity from the buoys is an In-Situ VuLink (telemetry) and AquaTroll500 (sonde), equipped with optical sensors capable of reading turbidity levels with an accuracy of +/- 0.5 NTU.

### 1.2 Summary of Monitoring Adjustments during Construction

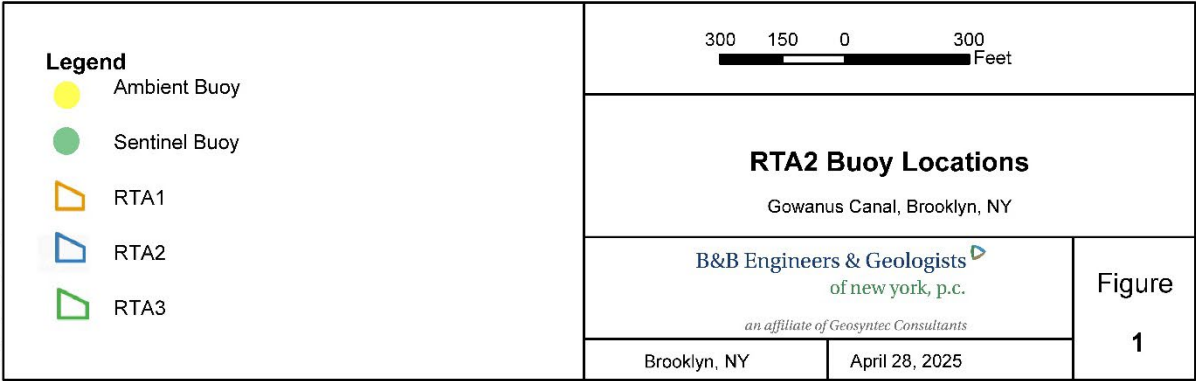
- August 9, 2024, after the conclusion of RTA1 WQMP, two additional buoys were added to the RTA2 WQMP, for a total of three sentinel buoys. The ambient buoy was moved to approximately ten meters north of Carroll Street Bridge, on the west side of the canal (ambient). A sentinel buoy was placed approximately twenty meters north of 3<sup>rd</sup> Street Bridge on the west side (3SB). A sentinel buoy was placed in Fourth Street Turning Basin (TB4). The 9<sup>th</sup> Street Bridge sentinel buoy (9SB) was not moved.
- To reduce instrument downtime, the 9th Street Bridge sentinel buoy (9SB) was relocated to the northeast side of the 9th Street Bridge on August 19, 2024. After two days of data collection, elevated turbidity readings were observed both during and outside of work hours. Consequently, on August 21, 2024, the buoy was moved again, this time to the northeast corner of the Hamilton Street Bridge.
- Turbidity readings at the Hamilton Street Bridge location exceeded 100 NTU both during and outside working hours. However, these readings were not representative of the actual turbidity within the RTA2 work area. Due to commercial traffic, a safe location for the sonde and buoy could not be found south of the 9th Street Bridge. Consequently, the sonde and buoy were relocated to the west side, 5 meters north of the 9th Street Bridge on Tuesday, August 27, 2024, at 08:15.
- Turbidity readings at 9SB were noted to be erratic and exceed 100 NTU both during and outside working hours. The buoy was moved approximately 20 meters north of 9<sup>th</sup> Street Bridge on Monday, September 9, 2024.

- On September 16, 2024, the 9SB was deselected from construction monitoring, as there are no construction activities in the main canal or in the vicinity of 9<sup>th</sup> Street Bridge. The buoy will remain in the water to collect background data as it is believed this area has naturally high NTU readings. A spot check zero calibration was performed on the buoy on Wednesday, September 18, 2024 to confirm the sensors were reading properly during this background monitoring period.
- On November 7, 2024, the ambient sonde and buoy was moved to the center of Carroll Street Bridge in an effort to reduce instrument downtime due to poor cell signal. This area was found to have a 100% cellular signal.
- On November 18, 2024, the sentinel buoy in TB4 was deselected from construction monitoring due to instrument errors. The buoy will remain out of service until maintenance and field observations can be made.
- On November 25, 2024, the 9SB sonde and buoy were placed back into the water quality monitoring program.
- On December 18, 2024, the 9SB sonde and buoy were relocated south of 9<sup>th</sup> Street Bridge along the eastern bulkhead, to avoid construction vessel traffic and shallow waters which had been resulting in false elevated readings, particularly during low tide events.
- On February 12, 2025, after observing a pause in data transmission, the ambient sonde and buoy were moved in an attempt to get a better signal in the area. It was moved to approximately 150 feet north of Carroll Street Bridge, to the center of the canal. On February 14, 2025, with data transmission issues not resolving, the ambient sonde and buoy were moved to approximately 200 feet south of Union Street Bridge, in the center of the canal where stronger signal strength has been observed. A test upload was performed; however data did not upload. Further troubleshooting will be required.
- On February 18, 2025, the ambient sonde buoy was removed from service due to consistent instrumentation and telemetry issues. The buoy will remain out of service until repairs are made.
- On February 25, 2025, the Ambient sonde and buoy was reinstated and positioned 200 feet south of the Union Street Bridge. Elevated readings were recorded, prompting a calibration check to verify the turbidity sensor's functionality. The sensor was confirmed to be operating normally.
- On February 25, 2025, the 9SB sonde was taken out of service due to instrumentation and telemetry failure. No data was recorded from 13:45 onward. The sonde will remain out of service until repairs are completed.
- On February 28, 2025, the Ambient buoy was moved another 200 feet south to the middle of Carrol Street bridge, to deeper water conditions.

- On March 17, 2025, a rental sonde unit was deployed at the sentinel buoy in TB4 while repairs to the original sonde are ongoing.
- On March 25, 2025, the sonde for the 9SB was redeployed into service. It was placed Northeast of the 9<sup>th</sup> Street Bridge. Readings have remained consistent and stable since deployment.
- On March 25, 2025, the 3SB was removed from service due to instrumentation and telemetry issues. The buoy will remain out of service until a rental sonde arrives while the other is sent out for repairs and maintenance.
- On March 28, 2025, the TB4 buoy was adjusted approximately 10 feet to deeper water conditions.
- On April 3, 2025, a repaired sonde was deployed at the north of 3SB location in lieu of a rental sonde as mentioned in the monitoring adjustment on March 25, 2025.
- On April 17, 2025, a repaired sonde replaced the rental unit housed by the sentinel buoy in TB4.
- On April 21, 2025, the 9SB was moved 25 feet North to avoid being in close proximity to an outfall and to prevent erroneously high readings.
- On April 24, 2025, a secondary anchor was added to the 9SB in order to prevent drift.
- On April 25, 2025, investigation and cleaning is ongoing at the TB4 buoy.
- On April 28, 2025, the Ambient sonde and buoy were moved 80 feet north and cleaning maintenance was performed. The readings stabilized following the movement and subsequent cleaning.



X:\03\_GIS\APRX\Canal\_Wide\



### 1.3 Current Reporting Period Scope of Monitoring

During the week of April 28, 2025, four buoys equipped with multi-parameter water quality sondes were deployed as described in Section 1.2. The Ambient buoy is deployed in the center of the canal, 80 feet north of Carrol Street bridge, the north third street sentinel buoy just north of the Third Street Bridge, the turning basin four sentinel buoy approximately 200 feet into the Fourth Street Basin, and the ninth street bridge sentinel buoy just north-east of the Ninth Street Bridge.

All readings from buoys were transmitted via telemetry at 15-minute intervals. The instrument used to collect turbidity and DO from the buoys is an In-Situ VuLink (telemetry) and AquaTroll500 (sonde), equipped with optical sensors capable of reading turbidity levels with an accuracy of +/-0.5 NTU and DO levels with an accuracy of +/-0.1 mg/L.

Visual observations of turbidity and sheen are summarized in Section 4.

### 1.4 Meteorological Conditions

The weather conditions onsite were as follows:

Meteorological Parameters	4/28/2025	4/29/2025	4/30/2025	5/1/2025	5/2/2025
<i>Wind Direction (from)</i>	WSW	SSW	NW	E	SSW
<i>Wind Speed (mph)</i>	5.5	8.0	6.6	6.4	4.4
<i>Temperature (°F)</i>	62.3	65.9	67.9	59.7	69.0
<i>Humidity (%)</i>	36.1	48.7	42.0	44.8	73.4
<i>Barometric Pressure (inHg)</i>	30.17	29.97	29.89	30.01	29.77
<i>Precipitation (Inch)</i>	0.531	0	0	0	0

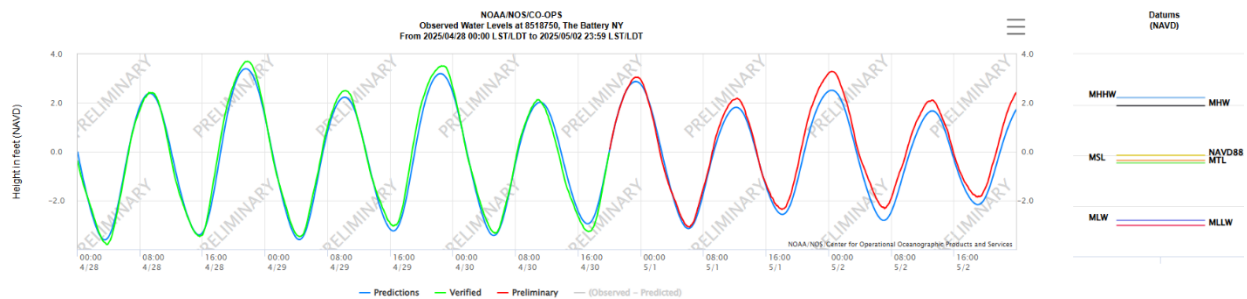
Table 1 - Summary of Weather Conditions for reporting period.

## 1.5 Tidal Conditions

Tidal data from the Battery (National Oceanic and Atmospheric Administration [NOAA] Station 8518750) was reviewed and is summarized as follows:

Date	Time (LST/LDT)	Predicted (ft)	Preliminary (ft)	High/Low
Monday, April 28, 2025	3:28 AM	-3.61	-3.72	L
Monday, April 28, 2025	9:14 AM	2.39	2.42	H
Monday, April 28, 2025	3:31 PM	-3.4	-3.44	L
Monday, April 28, 2025	9:29 PM	3.4	3.69	H
Tuesday, April 29, 2025	4:20 AM	-3.6	-3.47	L
Tuesday, April 29, 2025	10:08 AM	2.23	2.49	H
Tuesday, April 29, 2025	4:21 PM	-3.24	-3.03	L
Tuesday, April 29, 2025	10:22 PM	3.2	3.49	H
Wednesday, April 30, 2025	5:10 AM	-3.43	-3.29	L
Wednesday, April 30, 2025	11:06 AM	2.02	2.07	H
Wednesday, April 30, 2025	5:10 PM	-2.95	-3.26	L
Wednesday, April 30, 2025	11:19 PM	2.88	3.05	H
Thursday, May 1, 2025	6:02 AM	-3.14	-3.06	L
Thursday, May 1, 2025	12:09 PM	1.82	2.17	H
Thursday, May 1, 2025	6:02 PM	-2.57	-2.36	L
Friday, May 2, 2025	12:21 AM	2.52	3.28	H
Friday, May 2, 2025	6:59 AM	-2.81	-2.27	L
Friday, May 2, 2025	1:12 PM	1.67	2.11	H
Friday, May 2, 2025	7:01 PM	-2.16	-1.85	L

**Table 2 - NOAA Preliminary observations and predictions.**



**Figure 2 - Tidal Chart for reporting period.**

## 2. REPORT OF EXCEEDANCES

No exceedances to the trigger and action levels occurred during the monitoring period. Elevated readings were observed by the Ambient, TB4, and N3SB sondes but were found to be unrelated to in-water construction activities.

**Trigger criterion** – Any of the following:

- The rolling average of the relevant sentinel buoy turbidity measurements over a one-hour period exceeds the rolling average of the ambient buoy turbidity measurements by 20 NTU excluding any eliminated outlier measurements and in-waterway construction activities cannot be immediately excluded as the source following consultation with EPA; or
- Either an oil sheen or a turbidity plume is visually observed at the relevant sentinel buoy and in-waterway construction activities are readily identified as the source.
- **Action criterion** – Any of the following:
  - The rolling average of the turbidity measurements of the sentinel buoy outside of RTA2 over a one-hour period exceeds the rolling average of the ambient buoy turbidity measurements by 40 NTU excluding any eliminated outlier measurements and in-waterway construction activities cannot be immediately excluded as the source following consultation with EPA; or
  - Either an oil sheen or a turbidity plume is visually observed outside of RTA2, and any deployed engineering controls and in-waterway construction activities are readily identified as the source.

An outlier is defined as a reading that is outside the range of 50 to 200 percent of the average of the three previous readings. In addition, to be considered an outlier, the subsequent reading must return to a range of 75 to 133 percent of the average of the three readings preceding the outlier.

## **2.1 Response to Criteria Exceedances**

The trigger level criterion serves to provide early notification to the contractor of construction activities that may lead to an exceedance of the action level criterion. In the event of an exceedance to the trigger criterion, the contractor will not be stopped, and the contractor will be directed to investigate the source of the exceedance and evaluate Best Management Practices (BMPs). In the event of an exceedance to the action level criterion, in-waterway construction activities may be slowed or temporarily suspended as necessary while the contractor investigates the source of the exceedance and appropriate mitigation, and corrective measures are determined. A more detailed description of responses to exceedances of the trigger and action level criteria is provided in Section 4.2 of the WQMP.



### **3. TURBIDITY BUOY DATA**

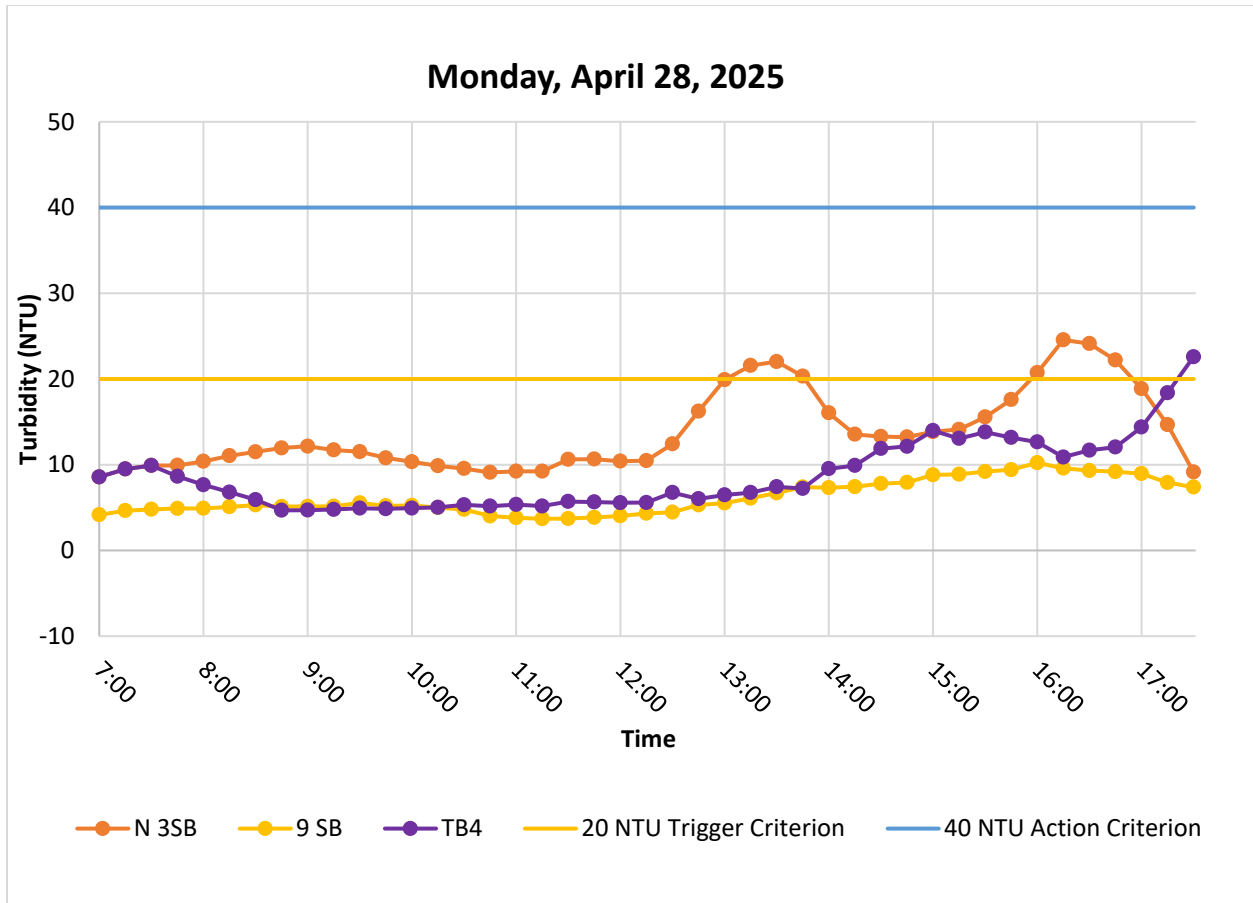
Elevated readings were recorded by the Ambient sonde on Monday from 07:00 to 14:15. Following investigation, it was determined that these were inaccurate readings as a result of the sonde sensors being blocked. The Ambient buoy and sonde were relocated further norther to avoid further obstructions and the sonde was cleaned resulting in turbidity levels dropping consistent with past data. Trigger and action criterion were set to limits of 20 and 40 NTU respectively, to allow for conservative monitoring of turbidity levels for Monday.

Elevated readings were recorded by the N3SB sonde on Monday from 13:00 to 13:45, and 16:00 to 16:50. An elevated reading was also recorded on Friday from 07:00 to 07:15. These readings were not sustained for over an hour and were unrelated to in-water construction activities.

Elevated readings were recorded by the TB4 sonde on Monday from 17:15 to 17:30; on Wednesday from 07:00 to 09:15 and 16:15 to 17:30; and on Friday from 14:30 to 15:30. These readings were unrelated to in-water construction activities. Anomalous readings were recorded on Thursday and are not presented in this report. Fluctuations in turbidity have been noted in the Fourth Street Turning Basin during this time of year in prior data.

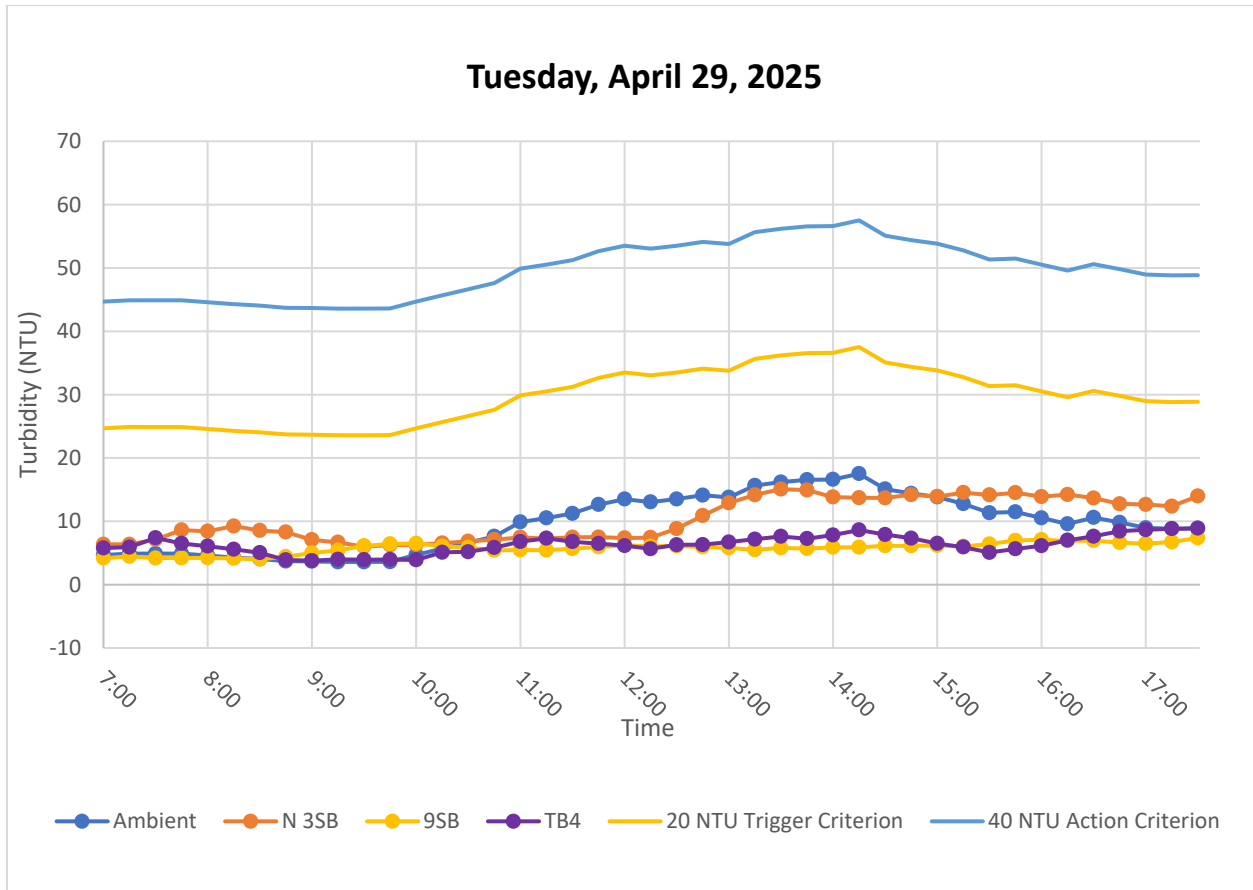
No exceedances to the trigger and action levels occurred during the monitoring period.

### 3.1 Monday, April 28, 2025



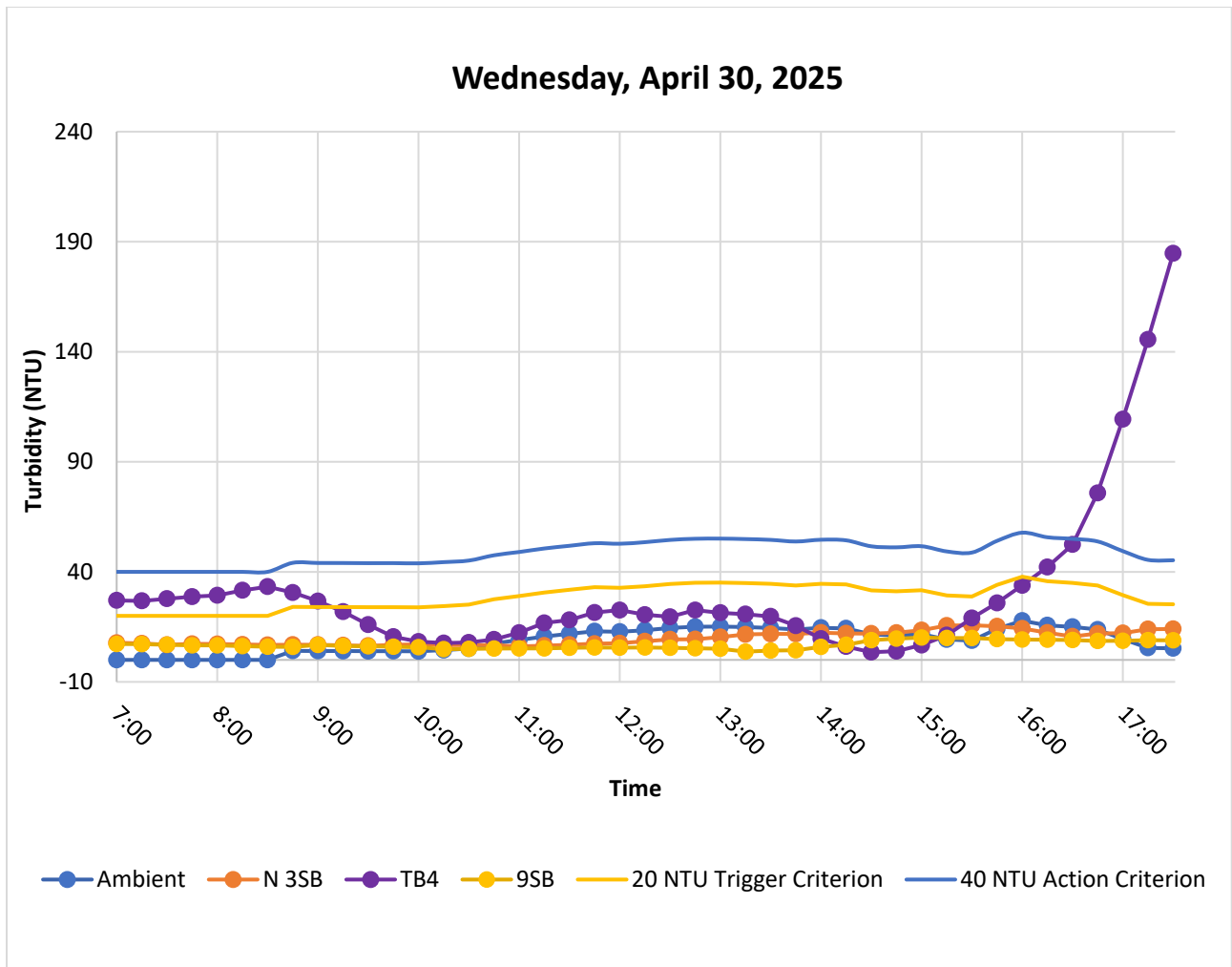
**Figure 3.** Hourly rolling average turbidity readings from 07:00 to 17:30. Elevated readings were recorded by the Ambient sonde. Out of conservancy they are not presented, resulting in the trigger and action criterion limits set at 20 and 40 NTU respectively. The elevated readings recorded by the TB4 and N3SB sondes was unrelated to in-water construction activities.

3.2 Tuesday, April 29, 2025



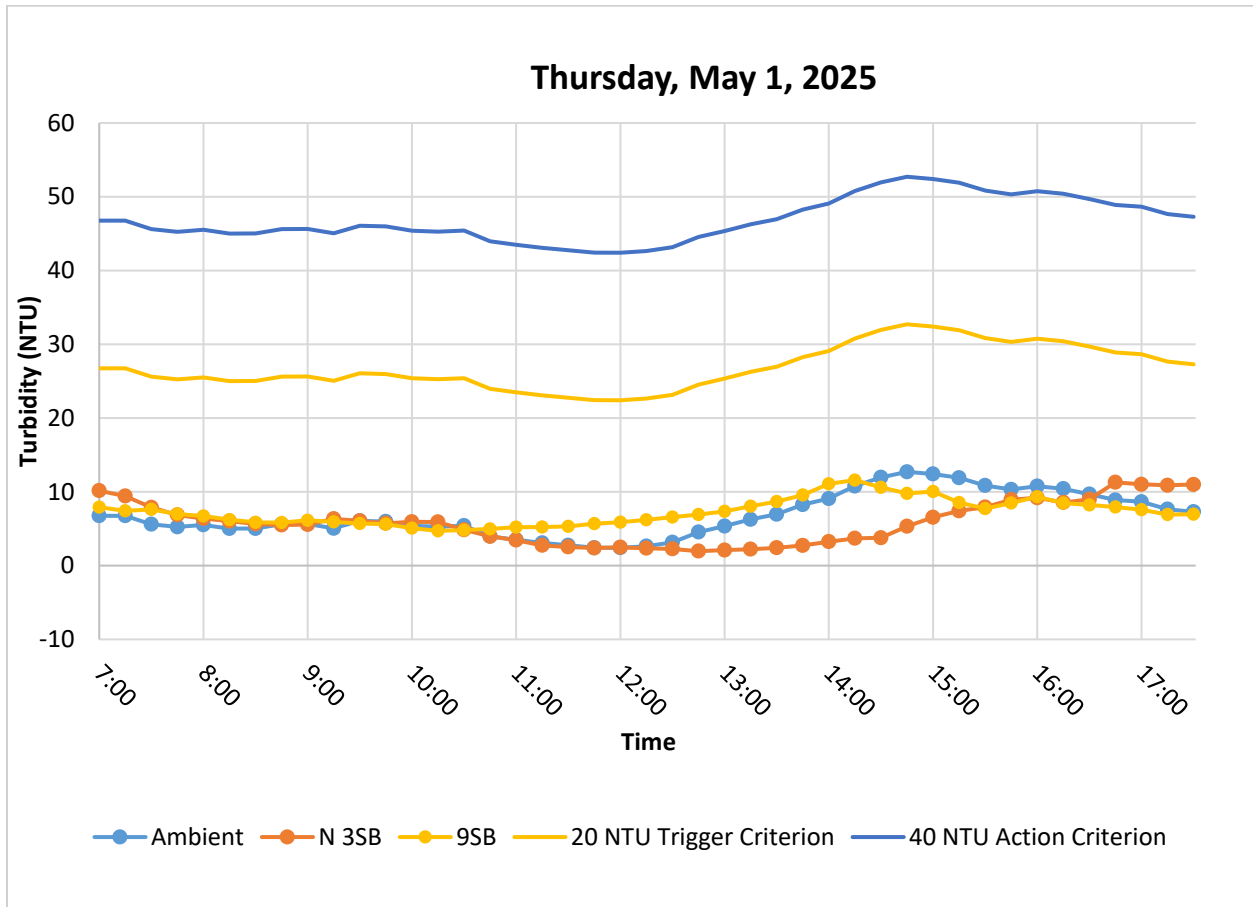
**Figure 4.** Hourly rolling average turbidity readings from 07:00 to 17:30.

### 3.3 Wednesday, April 30, 2025



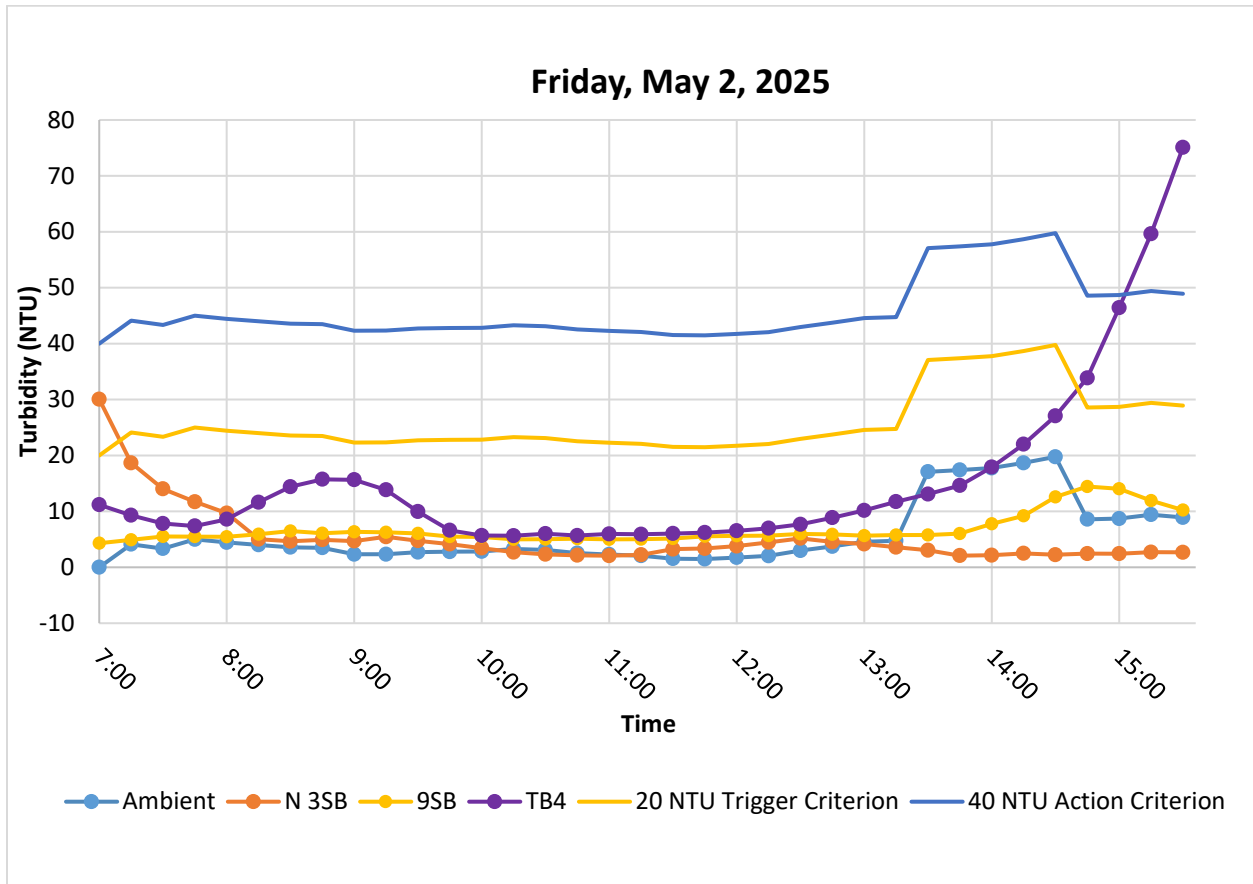
**Figure 5.** Hourly rolling average turbidity readings from 07:00 to 17:30. The elevated reading recorded by the TB4 sonde was unrelated to in-water construction activities.

3.4 Thursday, May 1, 2025



**Figure 6.** Hourly rolling average turbidity readings from 07:00 to 17:30. Anomalous readings were recorded by the TB4 sonde and are not presented.

3.5 Friday, May 2, 2025



**Figure 7.** Hourly rolling average turbidity readings from 07:00 to 15:30. The elevated reading recorded by the TB4 sonde was unrelated to in-water construction activities.

#### 4. SUMMARY OF VISUAL OBSERVATIONS

Throughout the majority of the reporting period, sheens in the RTA2 areas ranged from minimal to moderate.



**Figure 8 – April 28, 2025.** General Conditions in Canal north of 9<sup>th</sup> Street Bridge near TB6 during in-waterway construction activities.



**Figure 9 – April 30, 2025.** General Conditions in Canal north of 9<sup>th</sup> Street Bridge near TB6 during in-waterway construction activities.



**Figure 10 – May 2, 2025.** General Conditions in Canal south of 3<sup>rd</sup> Street Bridge near TB4 during in-waterway construction activities.



**APPENDIX A**  
**Turbidity Data Tables**

Table 3

Monday, Apr 28, 2025

Date	Time	Turbidity (NTU)			Rolling Average Turbidity (NTU)			Difference (NTU)		
		N3SB	TB4	9SB	N3SB	TB4	9SB	N3SB - Ambient	TB4 - Ambient	9SB - Ambient
4/28/2025	7:00:00	8.57	8.57	4.16	8.57	8.57	4.16	-40.53	-40.53	-44.94
4/28/2025	7:15:00	10.41	10.41	5.12	9.49	9.49	4.64	-61.73	-61.73	-66.58
4/28/2025	7:30:00	10.71	10.71	5.08	9.90	9.90	4.79	-68.86	-68.86	-73.97
4/28/2025	7:45:00	9.97	4.89	5.19	9.92	8.65	4.89	-65.85	-67.12	-70.88
4/28/2025	8:00:00	12.28	3.67	4.96	10.39	7.65	4.90	-64.00	-66.74	-69.49
4/28/2025	8:15:00	11.81	4.32	5.10	11.04	6.80	5.09	-73.67	-77.91	-79.62
4/28/2025	8:30:00	12.72	6.02	6.13	11.50	5.92	5.29	-71.48	-77.06	-77.68
4/28/2025	8:45:00	12.96	4.49	4.19	11.95	4.68	5.11	-75.48	-82.75	-82.32
4/28/2025	9:00:00	10.97	5.00	5.30	12.15	4.70	5.14	-81.47	-88.92	-88.48
4/28/2025	9:15:00	10.12	4.09	4.99	11.72	4.78	5.14	-152.97	-159.90	-159.55
4/28/2025	9:30:00	10.80	5.00	7.10	11.51	4.92	5.54	-246.27	-252.86	-252.24
4/28/2025	9:45:00	9.12	5.70	4.41	10.79	4.86	5.20	-298.67	-304.61	-304.27
4/28/2025	10:00:00	10.72	4.87	4.42	10.35	4.93	5.24	-316.68	-322.09	-321.78
4/28/2025	10:15:00	8.58	5.44	4.05	9.87	5.02	4.99	-310.13	-314.97	-315.00
4/28/2025	10:30:00	8.51	5.57	3.93	9.55	5.32	4.78	-247.97	-252.20	-252.73
4/28/2025	10:45:00	8.55	4.22	3.23	9.10	5.16	4.01	-179.58	-183.52	-184.67
4/28/2025	11:00:00	9.78	6.66	3.41	9.23	5.35	3.81	-161.09	-164.97	-166.51
4/28/2025	11:15:00	10.72	3.98	3.82	9.23	5.17	3.69	-142.38	-146.44	-147.92
4/28/2025	11:30:00	15.54	8.09	4.18	10.62	5.70	3.71	-219.09	-224.01	-226.00
4/28/2025	11:45:00	8.66	5.31	4.58	10.65	5.65	3.85	-258.36	-263.36	-265.16
4/28/2025	12:00:00	7.32	3.80	4.13	10.40	5.57	4.02	-243.77	-248.61	-250.15
4/28/2025	12:15:00	10.14	6.76	4.90	10.47	5.59	4.32	-234.31	-239.20	-240.46
4/28/2025	12:30:00	20.43	9.77	4.45	12.42	6.74	4.45	-281.27	-286.95	-289.24
4/28/2025	12:45:00	34.61	4.47	8.43	16.23	6.02	5.30	-212.54	-222.75	-223.48
4/28/2025	13:00:00	27.04	7.56	5.68	19.91	6.47	5.52	-203.04	-216.48	-217.43
4/28/2025	13:15:00	15.61	5.16	6.95	21.57	6.75	6.08	-174.49	-189.31	-189.97
4/28/2025	13:30:00	12.44	10.13	7.98	22.03	7.42	6.70	-135.30	-149.91	-150.63
4/28/2025	13:45:00	11.89	8.78	7.88	20.32	7.22	7.38	-67.79	-80.89	-80.73
4/28/2025	14:00:00	13.26	16.01	8.10	16.05	9.53	7.32	-48.03	-54.55	-56.76
4/28/2025	14:15:00	14.52	9.44	6.27	13.54	9.90	7.43	3.30	-0.34	-2.81
4/28/2025	14:30:00	14.28	15.06	8.73	13.28	11.88	7.79	2.87	1.47	-2.62
4/28/2025	14:45:00	12.18	11.36	8.65	13.22	12.13	7.93	3.70	2.60	-1.60
4/28/2025	15:00:00	15.03	17.98	12.31	13.85	13.97	8.81	4.43	4.55	-0.61
4/28/2025	15:15:00	14.54	11.43	8.43	14.11	13.05	8.88	5.12	4.06	-0.11
4/28/2025	15:30:00	21.77	13.20	7.89	15.56	13.81	9.20	7.23	5.48	0.88
4/28/2025	15:45:00	24.47	11.87	9.76	17.60	13.17	9.41	10.92	6.49	2.73
4/28/2025	16:00:00	27.85	8.77	12.73	20.73	12.65	10.22	13.93	5.85	3.42
4/28/2025	16:15:00	34.18	9.12	9.12	24.56	10.88	9.58	17.95	4.26	2.97
4/28/2025	16:30:00	12.34	15.44	7.07	24.12	11.68	9.31	17.13	4.69	2.32
4/28/2025	16:45:00	12.18	15.04	7.24	22.20	12.05	9.18	14.50	4.35	1.48
4/28/2025	17:00:00	7.78	23.54	8.60	18.87	14.38	8.95	11.03	6.54	1.11
4/28/2025	17:15:00	6.83	28.79	7.53	14.66	18.39	7.91	7.13	10.85	0.37
4/28/2025	17:30:00	6.58	30.13	6.49	9.14	22.59	7.39	2.01	15.45	0.25

Table 4

Tuesday, Apr 29, 2025

Date	Time	Turbidity (NTU)				Rolling Average Turbidity (NTU)				Difference (NTU)		
		Ambient	N3SB	TB4	9SB	Ambient	N3SB	TB4	9SB	N3SB - Ambient	TB4 - Ambient	9SB - Ambient
4/29/25	7:00:00	4.69	6.37	5.79	4.18	4.69	6.37	5.79	4.18	1.68	1.10	-0.50
4/29/25	7:15:00	5.11	--	6.03	4.76	4.90	6.37	5.91	4.47	1.47	1.01	-0.43
4/29/25	7:30:00	4.89	7.89	10.36	3.61	4.90	7.13	7.39	4.19	2.23	2.50	-0.71
4/29/25	7:45:00	--	11.63	3.85	4.31	4.90	8.63	6.51	4.22	3.73	1.61	-0.68
4/29/25	8:00:00	3.68	7.79	4.36	4.27	4.59	8.42	6.08	4.23	3.83	1.48	-0.37
4/29/25	8:15:00	3.44	9.68	3.33	3.75	4.28	9.25	5.59	4.14	4.97	1.30	-0.14
4/29/25	8:30:00	4.22	5.74	3.29	4.13	4.06	8.55	5.04	4.02	4.49	0.98	-0.05
4/29/25	8:45:00	3.50	6.63	4.71	5.58	3.71	8.29	3.91	4.41	4.58	0.19	0.70
4/29/25	9:00:00	3.52	5.61	3.25	7.26	3.68	7.09	3.79	5.00	3.41	0.11	1.32
4/29/25	9:15:00	3.26	5.78	5.35	6.35	3.59	6.69	3.99	5.42	3.10	0.40	1.83
4/29/25	9:30:00	3.42	6.26	3.11	7.31	3.59	6.00	3.94	6.13	2.42	0.36	2.54
4/29/25	9:45:00	4.37	7.00	3.50	5.60	3.62	6.25	3.98	6.42	2.64	0.37	2.81
4/29/25	10:00:00	8.91	6.85	4.33	6.05	4.70	6.30	3.91	6.52	1.60	-0.79	1.82
4/29/25	10:15:00	8.44	6.88	9.20	5.03	5.68	6.55	5.10	6.07	0.87	-0.58	0.39
4/29/25	10:30:00	7.99	7.26	5.78	5.36	6.63	6.85	5.18	5.87	0.22	-1.44	-0.76
4/29/25	10:45:00	8.34	7.58	6.42	5.14	7.61	7.11	5.85	5.44	-0.50	-1.76	-2.17
4/29/25	11:00:00	15.76	8.73	8.24	5.77	9.89	7.46	6.80	5.47	-2.43	-3.09	-4.42
4/29/25	11:15:00	12.07	6.01	6.92	5.92	10.52	7.29	7.31	5.44	-3.23	-3.21	-5.08
4/29/25	11:30:00	12.02	7.78	6.53	6.21	11.24	7.47	6.78	5.68	-3.76	-4.46	-5.56
4/29/25	11:45:00	15.03	7.44	4.28	6.69	12.64	7.51	6.48	5.94	-5.13	-6.16	-6.70
4/29/25	12:00:00	12.66	6.84	4.83	6.46	13.51	7.36	6.16	6.21	-6.15	-7.34	-7.30
4/29/25	12:15:00	13.48	9.15	5.72	5.05	13.05	7.44	5.66	6.06	-5.61	-7.39	-6.99
4/29/25	12:30:00	14.38	12.98	10.06	6.19	13.51	8.84	6.29	6.12	-4.68	-7.23	-7.40
4/29/25	12:45:00	15.03	18.12	6.66	5.38	14.12	10.91	6.31	5.95	-3.21	-7.81	-8.16
4/29/25	13:00:00	13.34	17.37	6.33	5.97	13.78	12.89	6.72	5.81	-0.89	-7.06	-7.97
4/29/25	13:15:00	22.04	13.25	7.11	4.90	15.66	14.17	7.18	5.50	-1.48	-8.48	-10.16
4/29/25	13:30:00	16.18	13.66	7.91	6.59	16.19	15.08	7.61	5.81	-1.12	-8.58	-10.39
4/29/25	13:45:00	16.20	12.23	8.28	5.62	16.56	14.93	7.26	5.69	-1.63	-9.30	-10.86
4/29/25	14:00:00	15.27	12.62	9.54	6.43	16.61	13.83	7.84	5.90	-2.78	-8.77	-10.70
4/29/25	14:15:00	17.88	16.83	10.26	5.96	17.51	13.72	8.62	5.90	-3.79	-8.89	-11.61
4/29/25	14:30:00	9.97	13.11	3.54	6.08	15.10	13.69	7.91	6.14	-1.41	-7.19	-8.96
4/29/25	14:45:00	12.66	16.19	5.01	6.56	14.39	14.20	7.33	6.13	-0.20	-7.07	-8.26
4/29/25	15:00:00	13.42	10.78	4.16	5.90	13.84	13.91	6.50	6.19	0.07	-7.34	-7.65
4/29/25	15:15:00	9.90	15.79	6.64	5.63	12.76	14.54	5.92	6.03	1.78	-6.84	-6.74
4/29/25	15:30:00	10.80	14.92	6.02	7.90	11.35	14.16	5.07	6.41	2.81	-6.27	-4.93
4/29/25	15:45:00	10.65	14.90	6.39	8.89	11.48	14.52	5.64	6.98	3.03	-5.84	-4.51
4/29/25	16:00:00	7.88	13.07	7.49	7.17	10.53	13.89	6.14	7.10	3.36	-4.39	-3.43
4/29/25	16:15:00	8.69	12.45	8.50	4.98	9.58	14.23	7.01	6.91	4.65	-2.58	-2.67
4/29/25	16:30:00	15.00	13.00	9.77	5.94	10.60	13.67	7.63	6.98	3.07	-2.97	-3.63
4/29/25	16:45:00	6.91	10.36	10.07	6.19	9.82	12.76	8.44	6.63	2.93	-1.38	-3.19
4/29/25	17:00:00	6.38	14.39	7.51	8.09	8.97	12.65	8.67	6.47	3.68	-0.30	-2.50
4/29/25	17:15:00	7.18	11.69	8.27	8.55	8.83	12.38	8.82	6.75	3.55	-0.01	-2.08
4/29/25	17:30:00	--	20.46	--	8.05	8.87	13.98	8.90	7.36	5.11	0.04	-1.50

Table 5

Wednesday, Apr 30, 2025

Date	Time	Turbidity (NTU)				Rolling Average Turbidity (NTU)				Difference (NTU)		
		Ambient	N3SB	TB4	9SB	Ambient	N3SB	TB4	9SB	N3SB - Ambient	TB4 - Ambient	9SB - Ambient
4/30/2025	7:00:00	--	7.75	27.01	7.21	--	7.75	27.01	7.21	--	--	--
4/30/2025	7:15:00	5.42	7.21	26.59	7.03	--	7.48	26.80	7.12	--	--	--
4/30/2025	7:30:00	--	5.63	29.73	6.44	--	6.86	27.78	6.89	--	--	--
4/30/2025	7:45:00	4.63	8.43	31.52	5.67	--	7.26	28.71	6.59	--	--	--
4/30/2025	8:00:00	3.69	6.96	31.75	--	--	7.20	29.32	6.59	--	--	--
4/30/2025	8:15:00	3.88	6.81	38.38	5.82	--	7.01	31.59	6.24	--	--	--
4/30/2025	8:30:00	3.68	6.11	34.96	5.96	--	6.79	33.27	5.97	--	--	--
4/30/2025	8:45:00	4.63	6.08	16.31	6.22	4.10	6.88	30.58	5.92	2.77	26.48	1.81
4/30/2025	9:00:00	4.28	8.55	12.08	9.15	4.03	6.90	26.69	6.79	2.87	22.66	2.75
4/30/2025	9:15:00	3.61	5.53	7.78	4.52	4.02	6.61	21.90	6.33	2.60	17.88	2.32
4/30/2025	9:30:00	3.53	5.68	8.72	4.91	3.95	6.39	15.97	6.15	2.44	12.02	2.20
4/30/2025	9:45:00	3.79	8.25	7.69	4.97	3.97	6.82	10.52	5.95	2.85	6.54	1.98
4/30/2025	10:00:00	4.13	7.54	5.34	5.11	3.87	7.11	8.32	5.73	3.24	4.45	1.86
4/30/2025	10:15:00	7.00	6.73	8.61	4.78	4.42	6.75	7.63	4.86	2.33	3.21	0.44
4/30/2025	10:30:00	7.19	5.37	9.14	5.09	5.13	6.71	7.90	4.97	1.58	2.77	-0.16
4/30/2025	10:45:00	15.52	5.70	15.57	5.63	7.53	6.72	9.27	5.12	-0.81	1.74	-2.41
4/30/2025	11:00:00	11.25	5.25	23.08	5.31	9.02	6.12	12.35	5.18	-2.90	3.33	-3.83
4/30/2025	11:15:00	12.13	9.40	27.50	--	10.62	6.49	16.78	5.20	-4.13	6.16	-5.41
4/30/2025	11:30:00	13.11	8.65	15.29	5.91	11.84	6.88	18.11	5.49	-4.96	6.28	-6.35
4/30/2025	11:45:00	--	7.72	26.06	5.62	13.00	7.35	21.50	5.62	-5.66	8.50	-7.38
4/30/2025	12:00:00	14.61	6.77	21.08	5.26	12.77	7.56	22.60	5.52	-5.21	9.83	-7.25
4/30/2025	12:15:00	14.08	9.75	12.67	--	13.48	8.46	20.52	5.60	-5.02	7.04	-7.89
4/30/2025	12:30:00	16.22	13.63	22.62	5.26	14.51	9.31	19.54	5.51	-5.20	5.04	-8.99
4/30/2025	12:45:00	15.22	9.01	30.57	4.85	15.03	9.38	22.60	5.25	-5.66	7.57	-9.79
4/30/2025	13:00:00	15.37	12.64	20.09	4.88	15.10	10.36	21.41	5.06	-4.74	6.31	-10.04
4/30/2025	13:15:00	13.56	12.79	17.82	0.00	14.89	11.57	20.75	3.75	-3.33	5.86	-11.14
4/30/2025	13:30:00	12.27	10.84	7.58	6.04	14.53	11.78	19.74	4.21	-2.75	5.21	-10.32
4/30/2025	13:45:00	12.51	13.64	1.53	5.95	13.79	11.78	15.52	4.34	-2.00	1.73	-9.44
4/30/2025	14:00:00	19.24	11.94	1.20	12.75	14.59	12.37	9.64	5.92	-2.22	-4.95	-8.67
4/30/2025	14:15:00	13.97	10.89	2.08	9.67	14.31	12.02	6.04	6.88	-2.29	-8.27	-7.43
4/30/2025	14:30:00	0.00	12.49	4.99	10.36	11.60	11.96	3.48	8.95	0.36	-8.12	-2.65
4/30/2025	14:45:00	9.96	12.79	9.90	9.66	11.14	12.35	3.94	9.68	1.21	-7.20	-1.46
4/30/2025	15:00:00	14.99	19.36	15.48	8.28	11.63	13.49	6.73	10.14	1.86	-4.90	-1.49
4/30/2025	15:15:00	7.46	22.45	23.54	11.80	9.28	15.60	11.20	9.95	6.32	1.92	0.68
4/30/2025	15:30:00	11.44	11.54	41.04	9.65	8.77	15.73	18.99	9.95	6.95	10.22	1.18
4/30/2025	15:45:00	26.54	10.08	39.33	7.89	14.08	15.24	25.86	9.46	1.17	11.78	-4.62
4/30/2025	16:00:00	28.55	7.98	49.90	8.61	17.80	14.28	33.86	9.25	-3.51	16.06	-8.55
4/30/2025	16:15:00	4.57	9.85	57.12	7.89	15.71	12.38	42.19	9.17	-3.33	26.47	-6.54
4/30/2025	16:30:00	3.87	13.77	74.72	11.02	14.99	10.64	52.42	9.01	-4.35	37.43	-5.98
4/30/2025	16:45:00	5.48	18.30	158.09	7.73	13.80	12.00	75.83	8.63	-1.80	62.03	-5.17
4/30/2025	17:00:00	4.62	10.96	206.87	8.15	9.42	12.17	109.34	8.68	2.75	99.92	-0.74
4/30/2025	17:15:00	8.68	16.91	231.14	9.89	5.44	13.96	145.59	8.94	8.51	140.15	3.49
4/30/2025	17:30:00	3.67	10.27	252.77	7.54	5.26	14.04	184.72	8.87	8.78	179.46	3.60

Table 6

Thursday, May 1, 2025

Date	Time	Turbidity (NTU)			Rolling Average Turbidity (NTU)			Difference (NTU)	
		Ambient	N3SB	9SB	Ambient	N3SB	9SB	N3SB - Ambient	9SB - Ambient
5/1/2025	7:00:00	6.75	10.16	7.91	6.75	10.16	7.91	3.40	1.16
5/1/2025	7:15:00	--	8.68	6.91	6.75	9.42	7.41	2.66	0.66
5/1/2025	7:30:00	4.46	4.85	8.04	5.61	7.89	7.62	2.29	2.01
5/1/2025	7:45:00	4.53	3.77	5.12	5.25	6.86	7.00	1.62	1.75
5/1/2025	8:00:00	6.33	4.48	5.59	5.52	6.39	6.72	0.87	1.20
5/1/2025	8:15:00	4.75	8.35	5.42	5.02	6.02	6.22	1.01	1.20
5/1/2025	8:30:00	5.08	6.76	5.11	5.03	5.64	5.86	0.61	0.83
5/1/2025	8:45:00	7.37	4.11	7.97	5.61	5.49	5.84	-0.12	0.23
5/1/2025	9:00:00	4.64	4.14	6.55	5.63	5.57	6.13	-0.06	0.50
5/1/2025	9:15:00	3.44	8.32	4.52	5.06	6.34	5.92	1.28	0.86
5/1/2025	9:30:00	9.81	7.00	4.41	6.07	6.07	5.72	0.00	-0.35
5/1/2025	9:45:00	4.60	5.09	4.60	5.97	5.73	5.61	-0.24	-0.36
5/1/2025	10:00:00	4.49	5.13	5.25	5.40	5.94	5.07	0.54	-0.33
5/1/2025	10:15:00	4.00	4.00	4.76	5.27	5.91	4.71	0.64	-0.56
5/1/2025	10:30:00	4.15	3.06	5.09	5.41	4.86	4.82	-0.55	-0.59
5/1/2025	10:45:00	2.63	2.54	5.13	3.98	3.97	4.97	-0.01	0.99
5/1/2025	11:00:00	2.22	2.52	5.83	3.50	3.45	5.21	-0.05	1.71
5/1/2025	11:15:00	2.41	1.55	5.30	3.08	2.74	5.22	-0.35	2.14
5/1/2025	11:30:00	2.34	2.96	5.19	2.75	2.53	5.31	-0.22	2.56
5/1/2025	11:45:00	2.54	2.34	7.00	2.43	2.38	5.69	-0.04	3.26
5/1/2025	12:00:00	2.55	3.03	6.04	2.41	2.48	5.87	0.07	3.46
5/1/2025	12:15:00	3.34	1.84	7.46	2.64	2.35	6.20	-0.29	3.56
5/1/2025	12:30:00	4.99	1.14	7.15	3.15	2.27	6.57	-0.89	3.41
5/1/2025	12:45:00	9.29	1.42	6.96	4.54	1.96	6.92	-2.59	2.38
5/1/2025	13:00:00	6.62	3.08	9.18	5.36	2.10	7.36	-3.26	2.00
5/1/2025	13:15:00	7.07	3.64	9.49	6.26	2.22	8.04	-4.04	1.78
5/1/2025	13:30:00	6.83	2.79	10.61	6.96	2.41	8.67	-4.55	1.71
5/1/2025	13:45:00	11.48	--	11.62	8.26	2.73	9.57	-5.53	1.31
5/1/2025	14:00:00	13.41	3.47	14.57	9.08	3.24	11.09	-5.84	2.01
5/1/2025	14:15:00	15.08	4.87	11.65	10.77	3.69	11.59	-7.08	0.81
5/1/2025	14:30:00	12.96	3.96	4.53	11.95	3.77	10.60	-8.18	-1.36
5/1/2025	14:45:00	10.62	8.97	6.59	12.71	5.32	9.79	-7.39	-2.92
5/1/2025	15:00:00	9.98	11.48	12.86	12.41	6.55	10.04	-5.86	-2.37
5/1/2025	15:15:00	10.89	7.79	7.07	11.91	7.41	8.54	-4.49	-3.37
5/1/2025	15:30:00	9.80	7.42	7.56	10.85	7.92	7.72	-2.92	-3.13
5/1/2025	15:45:00	10.32	9.08	8.34	10.32	8.95	8.48	-1.37	-1.84
5/1/2025	16:00:00	12.83	10.19	10.87	10.76	9.19	9.34	-1.57	-1.42
5/1/2025	16:15:00	8.23	8.29	8.59	10.41	8.55	8.49	-1.86	-1.93
5/1/2025	16:30:00	7.25	9.94	5.74	9.69	8.98	8.22	-0.70	-1.47
5/1/2025	16:45:00	5.81	18.94	6.13	8.89	11.29	7.93	2.40	-0.95
5/1/2025	17:00:00	9.13	7.73	6.57	8.65	11.02	7.58	2.37	-1.07
5/1/2025	17:15:00	7.81	9.55	7.55	7.64	10.89	6.92	3.24	-0.73
5/1/2025	17:30:00	6.47	8.83	8.83	7.29	11.00	6.96	3.70	-0.33

Table 7

Friday, May 2, 2025

Date	Time	Turbidity (NTU)				Rolling Average Turbidity (NTU)				Difference (NTU)		
		Ambient	N35B	TB4	95B	Ambient	N35B	TB4	95B	N35B - Ambient	TB4 - Ambient	95B - Ambient
5/2/2025	7:00:00	--	30.06	11.18	4.31	--	30.06	11.18	4.31	--	--	--
5/2/2025	7:15:00	4.11	7.27	7.43	5.54	4.11	18.66	9.30	4.92	14.55	5.19	0.81
5/2/2025	7:30:00	2.58	4.71	4.85	6.67	3.34	14.01	7.82	5.51	10.67	4.47	2.16
5/2/2025	7:45:00	8.29	4.83	6.09	5.46	4.99	11.72	7.39	5.49	6.72	2.39	0.50
5/2/2025	8:00:00	2.79	1.54	13.35	5.36	4.44	9.68	8.58	5.47	5.24	4.14	1.02
5/2/2025	8:15:00	2.24	6.72	26.44	6.52	4.00	5.01	11.63	5.91	1.01	7.63	1.91
5/2/2025	8:30:00	1.98	5.41	21.28	8.39	3.57	4.64	14.40	6.48	1.07	10.83	2.90
5/2/2025	8:45:00	2.13	6.12	11.52	4.65	3.48	4.92	15.74	6.07	1.44	12.25	2.59
5/2/2025	9:00:00	2.48	3.64	5.66	6.86	2.32	4.69	15.65	6.35	2.36	13.33	4.03
5/2/2025	9:15:00	2.83	5.34	4.33	4.94	2.33	5.45	13.84	6.27	3.12	11.51	3.94
5/2/2025	9:30:00	4.08	3.24	7.02	5.44	2.70	4.75	9.96	6.06	2.05	7.26	3.36
5/2/2025	9:45:00	2.42	2.39	4.54	5.53	2.79	4.15	6.61	5.48	1.36	3.82	2.69
5/2/2025	10:00:00	2.36	2.53	6.88	4.32	2.84	3.43	5.68	5.42	0.59	2.85	2.58
5/2/2025	10:15:00	4.73	0.00	5.49	4.81	3.28	2.70	5.65	5.01	-0.58	2.37	1.72
5/2/2025	10:30:00	1.98	3.41	6.10	5.03	3.12	2.31	6.01	5.03	-0.80	2.89	1.91
5/2/2025	10:45:00	1.19	2.37	5.35	5.89	2.54	2.14	5.67	5.12	-0.40	3.13	2.58
5/2/2025	11:00:00	1.16	2.05	6.04	4.98	2.28	2.07	5.97	5.00	-0.21	3.69	2.72
5/2/2025	11:15:00	1.33	3.34	6.57	4.47	2.08	2.23	5.91	5.04	0.16	3.83	2.96
5/2/2025	11:30:00	2.07	5.08	6.09	5.41	1.55	3.25	6.03	5.15	1.70	4.49	3.61
5/2/2025	11:45:00	1.64	3.98	6.97	6.95	1.48	3.36	6.20	5.54	1.89	4.73	4.06
5/2/2025	12:00:00	2.55	4.51	6.93	6.33	1.75	3.79	6.52	5.63	2.04	4.77	3.88
5/2/2025	12:15:00	2.64	5.42	8.37	5.18	2.05	4.47	6.99	5.67	2.42	4.94	3.62
5/2/2025	12:30:00	6.00	6.93	10.07	5.99	2.98	5.18	7.69	5.97	2.20	4.70	2.99
5/2/2025	12:45:00	5.82	1.80	12.00	4.99	3.73	4.53	8.87	5.89	0.80	5.14	2.16
5/2/2025	13:00:00	5.90	2.16	13.51	5.82	4.58	4.17	10.18	5.66	-0.42	5.59	1.08
5/2/2025	13:15:00	3.32	1.65	14.72	6.88	4.74	3.59	11.73	5.77	-1.14	7.00	1.04
5/2/2025	13:30:00	64.34	2.72	15.13	5.11	17.08	3.05	13.09	5.76	-14.02	-3.99	-11.32
5/2/2025	13:45:00	7.62	--	17.78	7.27	17.40	2.08	14.63	6.02	-15.32	-2.77	-11.38
5/2/2025	14:00:00	7.62	2.10	28.41	13.72	17.76	2.16	17.91	7.76	-15.60	0.15	-10.00
5/2/2025	14:15:00	10.44	3.51	33.97	12.98	18.67	2.49	22.00	9.19	-16.17	3.34	-9.47
5/2/2025	14:30:00	8.80	0.64	40.04	23.83	19.76	2.24	27.06	12.58	-17.52	7.30	-7.18
5/2/2025	14:45:00	8.42	3.53	49.10	--	8.58	2.45	33.86	14.45	-6.13	25.28	5.87
5/2/2025	15:00:00	8.25	2.38	80.52	5.62	8.70	2.43	46.41	14.04	-6.27	37.70	5.33
5/2/2025	15:15:00	11.12	3.42	94.58	5.22	9.41	2.70	59.64	11.91	-6.71	50.24	2.51
5/2/2025	15:30:00	7.97	3.40	111.25	6.27	8.91	2.68	75.10	10.24	-6.24	66.19	1.32